

ITEM NO.	PART NUMBER	DESCRIPTION
1	EMEC 073.4679.1	Injection valve 3/4" 8x12 FP. Includes tube connection kit and O-ring
2	EMEC 026.0371.0	O-ring Viton for 3/4" valve
3	EMEC 110.1098.1	Tube connection kit PVDF (3/4" Female thread, for 8x12 tube)
4	EMEC 059.0612.0	Delivery tubing Black (12mm OD/8mm ID)
5	EMEC 110.1147.1	Tube connection kit PVDF (3/4" Female thread, for 8x12 tube)
6	EMEC 026.0150.0	O-ring Viton for 1/2" valve
7	EMEC 025.0043.1	Delivery valve kit (Includes tube connection kit, ball, seat and spring)
8	EMEC 020.2510.1	Pump Head N LPV PMMA + FP + SS 16x22 and 8x12 for PRISMA 02 80 & 04 50
8A	EMEC 020.2529.1	Pump Head N LPV PMMA + FP + SS 16x22 and 8x12 for PRISMA 05 28 & 07 20
9	EMEC 025.0705.1	Head priming valve
10	EMEC 026.0409.0	O-ring viton
11	EMEC 025.1001.1	Suction valve kit (Includes ball, seat, spring and hose clamp)
12	EMEC 026.0220.0	Head O-ring Viton
13	EMEC 018.0022.0	Teflon Diaphragm for PRISMA 05 28 / 07 20
13A	EMEC 018.0060.0	Teflon Diaphragm for PRISMA 04 50 / 02 80
14	PPS 399 0448	22-32mm SS Hose Clamp
15	FHS P-SIL-012-001	Hose PVC Braided, 12.5mm ID, per metre

COMPATIBLE MODELS	
EMEC PRISMA 04 50 LPV	EMEC PRISMA 05 28 LPV
EMEC PRISMA 07 20 LPV	



DATE	Details	ISSUED BY	APPROVED BY
21/07/2025	Release Information	Admin	LF

NOTE
Only use written dimensions. Dimensions are in Millimeters unless otherwise specified. Do not scale. If in doubt consult with Convergent Water Controls

FILE: C:\CWC\Library\Products From Suppliers\EMEC\Pumps\Prisma\EMEC PRISMA

MATERIAL: Misc

PRODUCT:
EMEC PRISMA 02 80 FP LPV

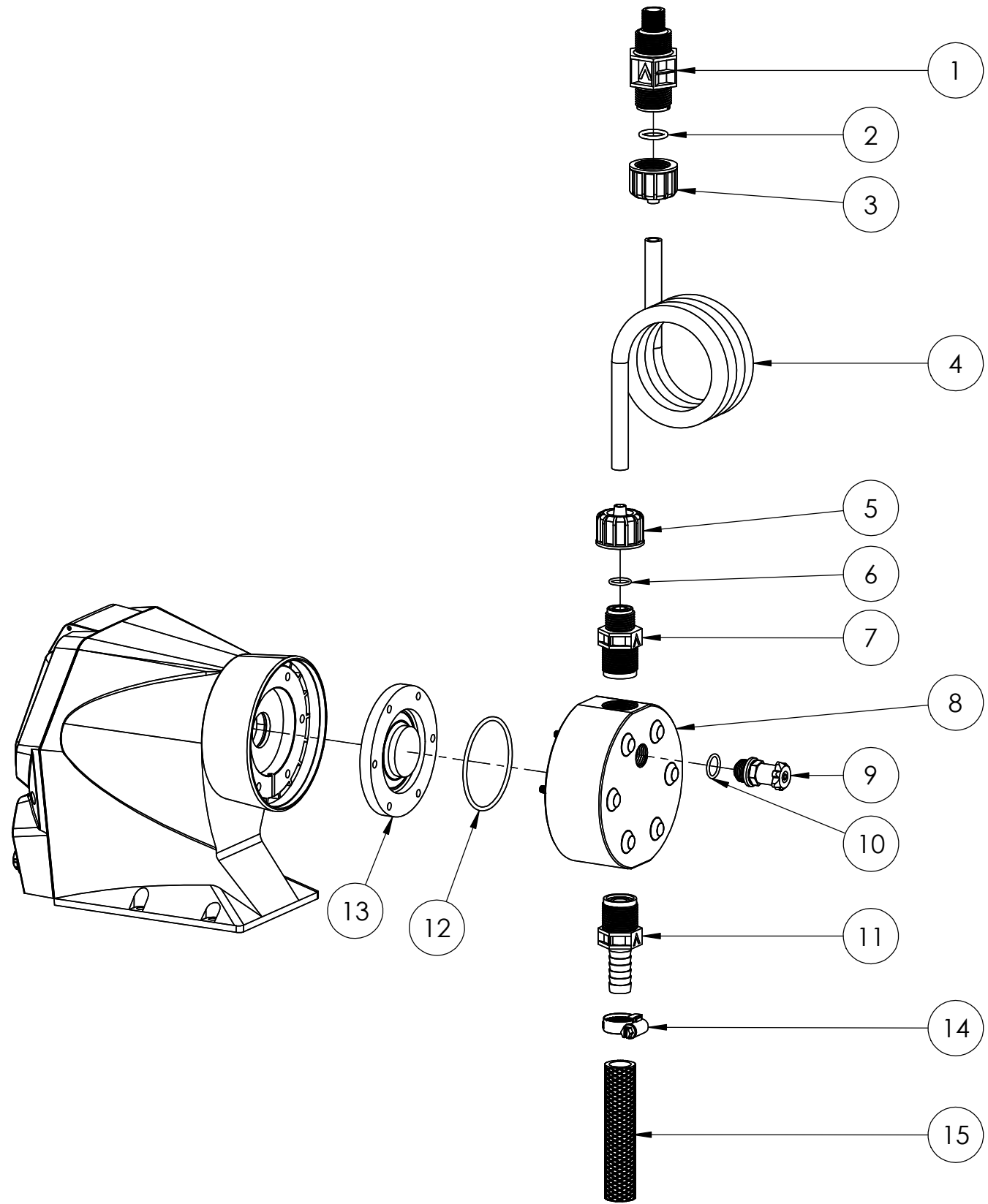
DRAWING TYPE:
Spare Parts

DRAWING No:
EMEC PRISMA 02 80 FP LPV_ASM

COPYRIGHT
The designs, concepts & specifications within this drawing are the property of Convergent Water Controls Pty Ltd. They must not be copied or reproduced wholly or in part without written consent from Convergent Water Controls Pty Ltd.

MASS: 1368.24 grams

Revision	2
SHEET SIZE	A3
SHEET	1 OF 1
SCALE	1:4



ITEM NO.	PART NUMBER	DESCRIPTION
1	EMEC 073.4679.1	Injection valve 3/4" 8x12 FP. Includes tube connection kit and O-ring
2	EMEC 026.0371.0	O-ring Viton for 3/4" valve
3	EMEC 110.1098.1	Tube connection kit PVDF (3/4" Female thread, for 8x12 tube)
4	EMEC 059.0612.0	Delivery tubing Black (12mm OD/8mm ID)
5	EMEC 110.1147.1	Tube connection kit PVDF (3/4" Female thread, for 8x12 tube)
6	EMEC 026.0150.0	O-ring Viton for 1/2" valve
7	EMEC 025.0043.1	Delivery valve kit (Includes tube connection kit, ball, seat and spring)
8	EMEC 020.2510.1	Pump Head N LPV PMMA + FP + SS 16x22 and 8x12 for PRISMA 02 80 & 04 50
8A	EMEC 020.2529.1	Pump Head N LPV PMMA + FP + SS 16x22 and 8x12 for PRISMA 05 28 & 07 20
9	EMEC 025.0705.1	Head priming valve
10	EMEC 026.0409.0	O-ring viton
11	EMEC 025.1001.1	Suction valve kit (Includes ball, seat, spring and hose clamp)
12	EMEC 026.0220.0	Head O-ring Viton
13	EMEC 018.0022.0	Teflon Diaphragm for PRISMA 05 28 / 07 20
13A	EMEC 018.0060.0	Teflon Diaphragm for PRISMA 04 50 / 02 80
14	PPS 399 0448	22-32mm SS Hose Clamp
15	FHS P-SIL-012-001	Hose PVC Braided, 12.5mm ID, per metre

COMPATIBLE MODELS	
EMEC PRISMA 04 50 LPV	EMEC PRISMA 05 28 LPV
EMEC PRISMA 07 20 LPV	



**Convergent
Water
Controls**

PRODUCT:	EMEC PRISMA 02 80 FP LPV	Revision	2
DRAWING TYPE:	Spare Parts - Wireframe	SHEET SIZE	A3
DRAWING No:	EMEC PRISMA 02 80 FP LPV_ASM	SHEET	1 OF 1
NOTE	COPYRIGHT The designs, concepts & specifications within this drawing are the property of Convergent Water Controls Pty Ltd. They must not be copied or reproduced wholly or in part without written consent from Convergent Water Controls Pty Ltd.		
FILE: C:\CWC\Library\Products From Suppliers\EMEC\Pumps\Prisma\EMEC PRISMA	SCALE		
MATERIAL: Misc	MASS: 1368.24 grams		