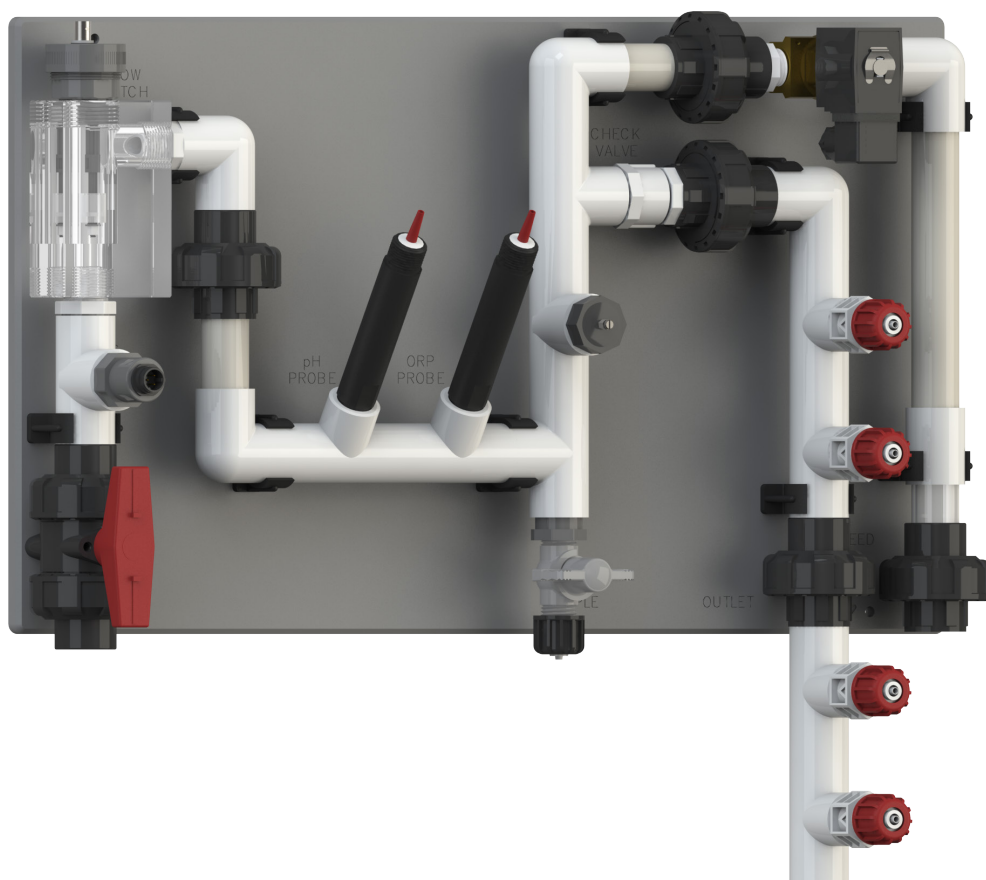




## PVC Manifolds for

- Conductivity pH & ORP
- pH
- pH & ORP
- ORP



### Contact Details:



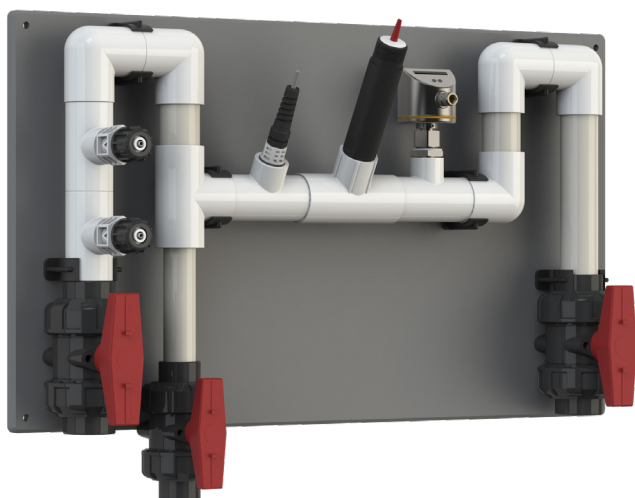
t: 1800 137 954

e: [sales@cw.com.au](mailto:sales@cw.com.au)

w: [www.cw.com.au](http://www.cw.com.au)

*Ideal for:  
Trade Waste pH  
Swimming Pools  
Water Features  
Cooling Towers*

# MAN PH-1-SI5006



## Variables Measured:

---

pH & Temp

## Applications:

---

Trade Waste pH Control

## Dimensions:

---

600mm (W) x 345mm (H) x 10mm (D)

## Description:

---

Trade Waste pH Control 1" (25mm) Manifold on PVC board with IFM SI5006 240Vac Non-Fouling Flow Switch. True Union Ball valves for Inlet, Outlet & Drain. (Includes Flow switch cable), 1/2" & 3/4" ports for optional 1/2" or 3/4" pH probe. Check valve omitted to reduce chances of blockage. Injection valves and temperature probe optional

## Picture includes Optional Parts:

---

- 1 x pH probe, part no WA M-12-HpH-FLAT
- 1 x Temperature probe, part no EMEC ETEPT
- 2 x Injection valves from Optional Dosing Pumps (Acid and/or Base)

## Compatible Controllers:

---

- ✓ EMEC LDPH
- ✓ EMEC LDSPH PLUS
- ✓ EMEC LDPHPHT
- ✓ EMEC CENTURIO

*Request More Info*

# MAN RX-PRB-1/2



## Variables Measured:

ORP or pH (with 1/2" threaded Probes)

## Applications:

ORP Control (with ORP probe), pH Control of Acid and/or Base (with pH probe)

## Dimensions:

450mm (W) x 345mm (H) x 10mm (D)

## Description:

Manifold 3/4" (20mm) on PVC backboard Inlet to Outlet: True union Ball valve, Flow Switch, 1/2" Port for optional ORP or pH Probe, Sample Point, 3/4" port for optional Solution Ground Probe with blanking plug, check valve and 2 ports for optional injection valves. Excludes pH, ORP and Ground Probes

## Picture includes Optional Parts:

- 1 x ORP probe, part no WA M-10-ORP-A-SC-1.5M or 1 x pH probe, part no WA OPF10-NNN-1.5m
- 2 x Injection valves from Optional Dosing Pumps (Chlorine for ORP, Acid and/or Base for pH)

## Compatible Controllers:

- ✓ PH-XP2 / PHD-XP2 / ORP-XP2
- ✓ EMEC LDPH / LDRH
- ✓ EMEC LDSPH PLUS / LDSRH PLUS
- ✓ EMEC LDPHPHT
- ✓ EMEC CENTURIO

*Request More Info*

# MAN RX-PRB-3/4



## Variables Measured:

ORP or pH (with  $\frac{3}{4}$ " threaded probes)

## Applications:

ORP Control (with ORP probe), pH Control of Acid and/or Base (with pH probe)

## Dimensions:

450mm (W) x 345mm (H) x 10mm (D)

## Description:

Manifold  $\frac{3}{4}$ " (20mm) on PVC backboard Inlet to Outlet: True union Ball valve, Flow Switch,  $\frac{3}{4}$ " Port for optional ORP or pH Probe, Sample Point,  $\frac{3}{4}$ " port for optional Solution Ground Probe with blanking plug, check valve and 2 ports for optional injection valves. Excludes pH, ORP and Ground Probes

## Picture includes Optional Parts:

- 1 x ORP probe, part no WA OPF11-PB11B2 or 1 x pH probe, part no WA OCPF81-LH11E21
- 2 x Injection valves from Optional Dosing Pumps (Chlorine for ORP, Acid and/or Base for pH)

## Compatible Controllers:

- ✓ PH-XP2 / PHD-XP2 / ORP-XP2
- ✓ EMEC LDPH / LDRH
- ✓ EMEC LDSPH PLUS / LDSRH PLUS
- ✓ EMEC LDPHPHT
- ✓ EMEC CENTURIO

*Request More Info*

## MAN RX-PRB-12mm



### Variables Measured:

ORP or pH (with 12mm diameter Plastic body Probes – Not suitable for glass)

### Applications:

ORP Control (with ORP probe), pH Control of Acid and/or Base (with pH probe)

### Dimensions:

450mm (W) x 345mm (H) x 10mm (D)

### Description:

Manifold  $\frac{3}{4}$ " (20mm) on PVC backboard Inlet to Outlet: True union Ball valve, Flow Switch,  $\frac{1}{2}$ " Ports with compression fittings for optional 12mm diameter ORP or pH Probe, Sample Point,  $\frac{3}{4}$ " port for optional Solution Ground Probe with blanking plug, check valve and 2 ports for optional injection valves. Excludes pH, ORP and Ground Probes

### Picture includes Optional Parts:

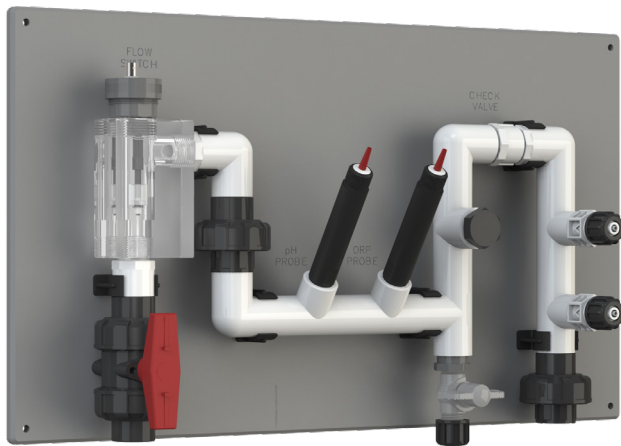
- 1 x ORP probe, part no IONODE IH30-01m or 1 x pH probe, part no IONODE IH40-01m
- 2 x Injection valves from Optional Dosing Pumps (Chlorine for ORP, Acid and/or Base for pH)

### Compatible Controllers:

- ✓ PH-XP2 / PHD-XP2 / ORP-XP2
- ✓ EMEC LDPH / LDRH
- ✓ EMEC LDSPH PLUS / LDSRH PLUS
- ✓ EMEC LDPHPHT
- ✓ EMEC CENTURIO

*Request More Info*

# MAN PHRX-PRB-1/2



## Variables Measured:

pH & ORP (with ½" threaded probes)

## Applications:

Swimming Pools, Water Features, ORP Control of Chlorine with pH Correction

## Dimensions:

600mm (W) x 345mm (H) x 10mm (D)

## Description:

Manifold ¾" (20mm) on PVC backboard Inlet to Outlet: True union Ball valve, Flow Switch, 2 x 1/2" Ports for optional pH & ORP Probes, Sample Point, ¾" port for optional Solution Ground Probe with blanking plug, check valve and 2 ports for optional injection valves. Excludes pH, ORP and Ground Probes

## Picture includes Optional Parts:

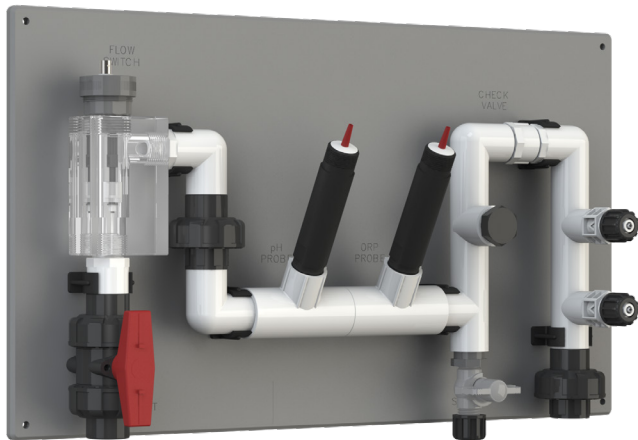
- 1 x ORP probe, part no WA M-10-ORP-A-SC-1.5M
- 1 x pH probe, part no WA OPF10-NNN-1.5m
- 2 x Injection valves from Optional Dosing Pumps

## Compatible Controllers:

- ✓ EMEC LDPHRH
- ✓ EMEC LDPHRH PLUS
- ✓ EMEC CENTURIO

Request More Info

# MAN PHRX-PRB-3/4



## Variables Measured:

pH & ORP (with 3/4" threaded probes)

## Applications:

Industrial ORP Control of Chlorine with pH Correction/Monitoring

## Dimensions:

600mm (W) x 345mm (H) x 10mm (D)

## Description:

Manifold 3/4" (20mm) on PVC backboard Inlet to Outlet: True union Ball valve, Flow Switch, 2 x 3/4" Ports for optional pH & ORP Probes, Sample Point, 3/4" port for optional Solution Ground Probe with blanking plug, check valve and 2 ports for optional injection valves. Excludes pH, ORP and Ground Probes

## Picture includes Optional Parts:

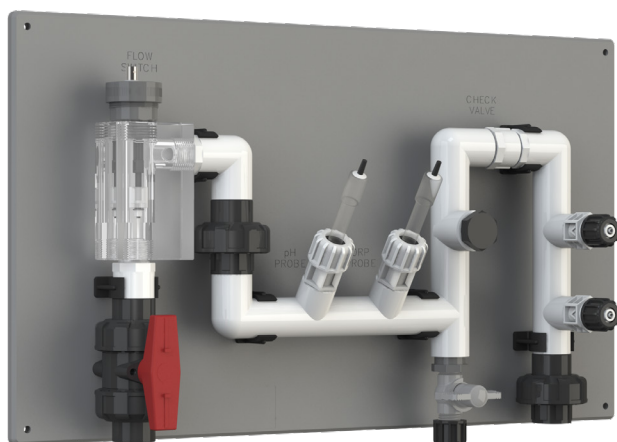
- 1 x ORP probe, part no WA OPF11-PB11B2
- 1 x pH probe, part no WA OCPF81-LH11E21
- 2 x Injection valves from Optional Dosing Pumps

## Compatible Controllers:

- ✓ EMEC LDPHRH
- ✓ EMEC LDPHRH PLUS
- ✓ EMEC CENTURIO

*Request More Info*

## MAN PHRX-PRB-12mm



### Variables Measured:

pH & ORP (with 12mm diameter Plastic body Probes – Not suitable for glass probes)

### Applications:

Swimming Pools, Water Features, ORP Control of Chlorine with pH Correction

### Dimensions:

600mm (W) x 345mm (H) x 10mm (D)

### Description:

Manifold  $\frac{3}{4}$ " (20mm) on PVC backboard Inlet to Outlet: True union Ball valve, Flow Switch, 2 x  $1\frac{1}{2}$ " Ports with compression fittings for optional 12mm diameter pH & ORP Plastic body Probes, Sample Point,  $\frac{3}{4}$ " port for optional Solution Ground Probe with blanking plug, check valve and 2 ports for optional injection valves. Excludes pH, ORP and Ground Probes

### Picture includes Optional Parts:

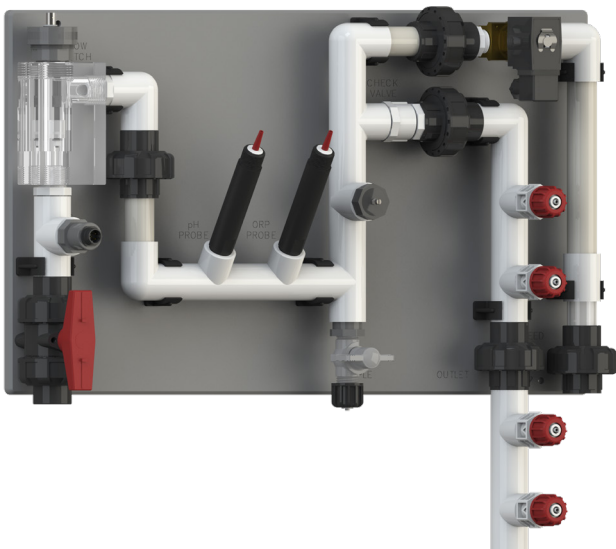
- 1 x ORP probe, part no IONODE IH30-01m
- 1 x pH probe, part no IONODE IH40-01m
- 2 x Injection valves from Optional Dosing Pumps

### Compatible Controllers:

- ✓ EMEC LDPHRH
- ✓ EMEC LDPHRH PLUS
- ✓ EMEC CENTURIO

*Request More Info*

# MAN DIGI-PLUS-C-1/2



## Variables Measured:

Conductivity/TDS, Temp, pH & ORP

## Applications:

Cooling Tower Bleed & Dosing via Timers, pH & ORP (Chlorine)

## Dimensions:

600mm (W) x 345mm (H) x 10mm (D)

## Description:

DIGICHEM Plus+ Manifold 3/4" (20mm) on PVC backboard Inlet to Outlet: Ball valve, port for optional TDS probe, Flow switch, 2 x 1/2" Ports for optional pH & ORP Probes, sample point, 3/4" Port for optional solution Ground probe. Includes Bleed solenoid valve, check valve and 4 ports for optional injection valves

## Picture includes Optional Parts:

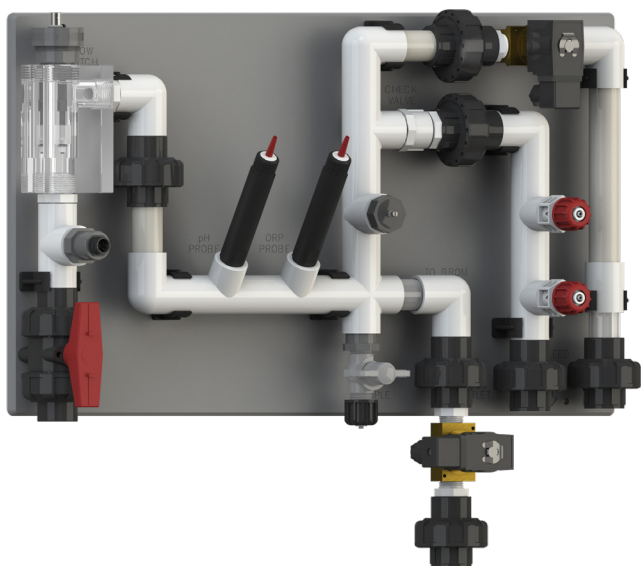
- 1 x TDS/Conductivity probe, part no SP-DCON-PB10AT-P
- 1 x ORP probe, part no WA M-10-ORP-A-SC-1.5M
- 1 x pH probe, part no WA OPF10-NNN-1.5m
- 1 x Solution Ground probe, part no SP-DCON-CMR
- 4 x Injection valves with red caps, part no SP-SK-03A

## Compatible Controllers:

- ✓ DP-CA-RXP
- ✓ DP-CAPHP-RXP
- ✓ DP-CAPH-RXPP

*Request More Info*

# MAN DIGI-PLUS-B-1/2



## Variables Measured:

Conductivity/TDS, Temp, pH & ORP

## Applications:

Cooling Tower Bleed & Dosing via Timers, pH & Brominator (ORP)

## Dimensions:

600mm (W) x 345mm (H) x 10mm (D)

## Description:

DIGICHEM Plus+ Manifold 3/4" (20mm) on PVC backboard Inlet to Outlet: Ball valve, port for optional TDS probe, Flow switch, 2 x 1/2" Ports for optional pH & ORP Probes, sample point, 3/4" Port for optional solution Ground probe. Includes Bleed & Brominator solenoid valves, check valve and 3 ports for optional injection valves

## Picture includes Optional Parts:

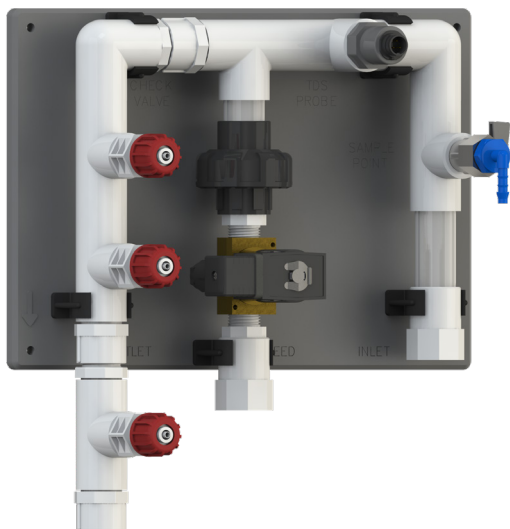
- 1 x TDS/Conductivity probe, part no SP-DCON-PB10AT-P
- 1 x ORP probe, part no WA M-10-ORP-A-SC-1.5M
- 1 x pH probe, part no WA OPF10-NNN-1.5m
- 1 x Solution Ground probe, part no SP-DCON-CMR
- 2 x Injection valves with red caps, part no SP-SK-03A

## Compatible Controllers:

- ✓ DP-CA-RXB
- ✓ DP-CAPH-RXB

*Request More Info*

# MAN DIGI-AB2-V-CABG



## Variables Measured:

Conductivity/TDS & Temp

## Applications:

Cooling Tower Bleed & Dosing via Timers

## Dimensions:

235mm (W) x 345mm (H) x 10mm (D)

## Description:

DIGICHEM-AB2-V-CABG Manifold  $\frac{3}{4}$  " (20mm) on PVC backboard including all PVC parts, sample valve, solenoid valve and all ports. Excludes optional TDS probe and 3 Injection valves

## Picture includes Optional Parts:

- 1 x TDS/Conductivity probe, part no SP-DCON-PB10AT-P
- 3 x Injection valves with red caps, part no SP-SK-03A

## Compatible Controllers:

- ✓ DIGICHEM-XP2
- ✓ DIGICHEM-AB2-V-CABG

## Contact Details:



t: 1800 137 954

e: [sales@cw.com.au](mailto:sales@cw.com.au)

w: [www.cw.com.au](http://www.cw.com.au)