
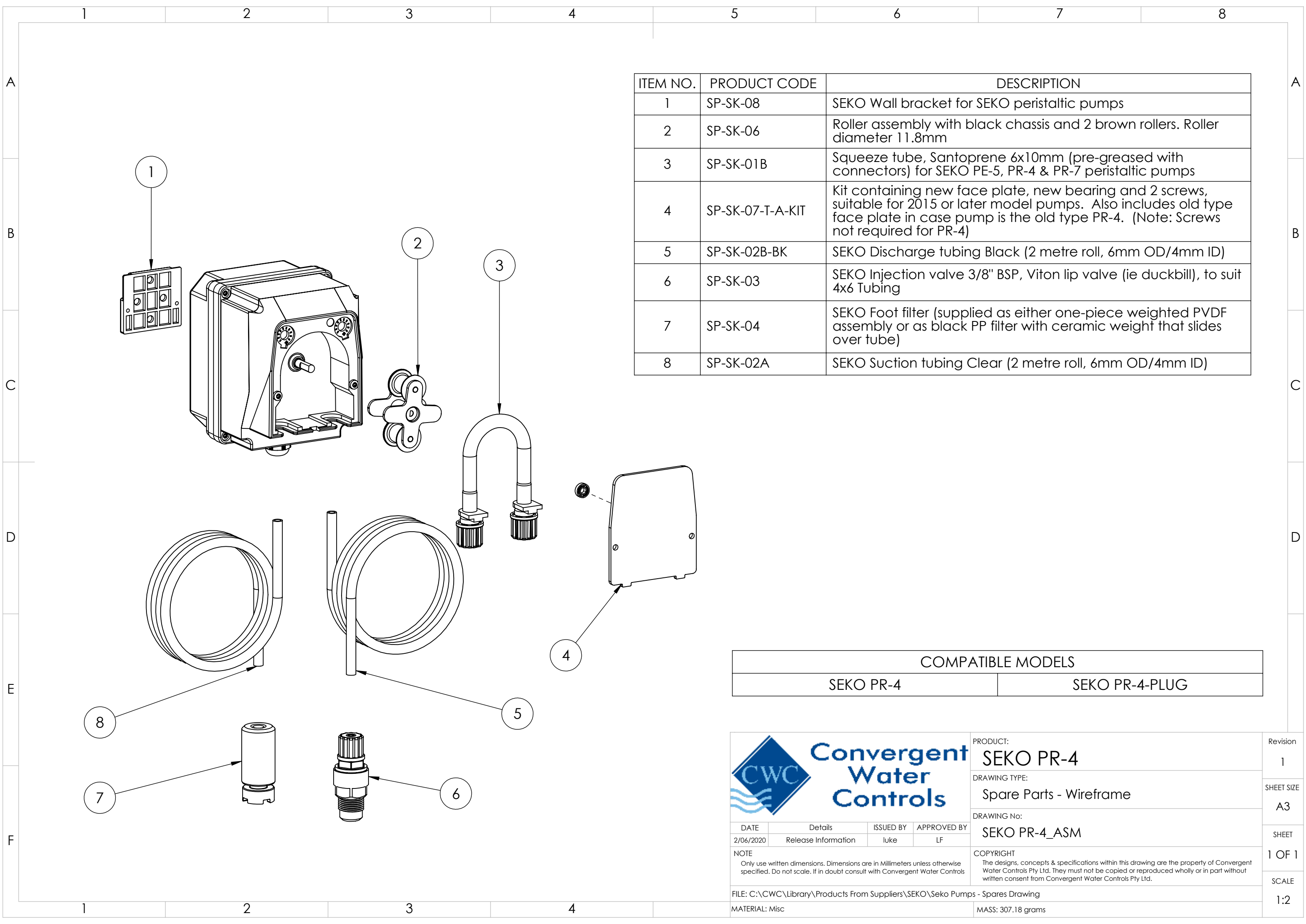


ITEM NO.	PRODUCT CODE	DESCRIPTION
1	SP-SK-08	SEKO Wall bracket for SEKO peristaltic pumps
2	SP-SK-06	Roller assembly with black chassis and 2 brown rollers. Roller diameter 11.8mm
3	SP-SK-01B	Squeeze tube, Santoprene 6x10mm (pre-greased with connectors) for SEKO PE-5, PR-4 & PR-7 peristaltic pumps
4	SP-SK-07-T-A-KIT	Kit containing new face plate, new bearing and 2 screws, suitable for 2015 or later model pumps. Also includes old type face plate in case pump is the old type PR-4. (Note: Screws not required for PR-4)
5	SP-SK-02B-BK	SEKO Discharge tubing Black (2 metre roll, 6mm OD/4mm ID)
6	SP-SK-03	SEKO Injection valve 3/8" BSP, Viton lip valve (ie duckbill), to suit 4x6 Tubing
7	SP-SK-04	SEKO Foot filter (supplied as either one-piece weighted PVDF assembly or as black PP filter with ceramic weight that slides over tube)
8	SP-SK-02A	SEKO Suction tubing Clear (2 metre roll, 6mm OD/4mm ID)

COMPATIBLE MODELS	
SEKO PR-4	SEKO PR-4-PLUG

<div></div> <div>Convergent Water Controls</div>				PRODUCT:	Revision
				DRAWING TYPE:	1
				DRAWING No:	SHEET SIZE
DATE	Details	ISSUED BY	APPROVED BY	Spare Parts	A3
2/06/2020	Release Information	luke	LF	SEKO PR-4_ASM	SHEET
NOTE				COPYRIGHT	1 OF 1
Only use written dimensions. Dimensions are in Millimeters unless otherwise specified. Do not scale. If in doubt consult with Convergent Water Controls				The designs, concepts & specifications within this drawing are the property of Convergent Water Controls Pty Ltd. They must not be copied or reproduced wholly or in part without written consent from Convergent Water Controls Pty Ltd.	SCALE
FILE: C:\CWC\Library\Products From Suppliers\SEKO\Seko Pumps - Spares Drawing					1:2
MATERIAL: Misc				MASS: 307.18 grams	



ITEM NO.	PRODUCT CODE	DESCRIPTION
1	SP-SK-08	SEKO Wall bracket for SEKO peristaltic pumps
2	SP-SK-06	Roller assembly with black chassis and 2 brown rollers. Roller diameter 11.8mm
3	SP-SK-01B	Squeeze tube, Santoprene 6x10mm (pre-greased with connectors) for SEKO PE-5, PR-4 & PR-7 peristaltic pumps
4	SP-SK-07-T-A-KIT	Kit containing new face plate, new bearing and 2 screws, suitable for 2015 or later model pumps. Also includes old type face plate in case pump is the old type PR-4. (Note: Screws not required for PR-4)
5	SP-SK-02B-BK	SEKO Discharge tubing Black (2 metre roll, 6mm OD/4mm ID)
6	SP-SK-03	SEKO Injection valve 3/8" BSP, Viton lip valve (ie duckbill), to suit 4x6 Tubing
7	SP-SK-04	SEKO Foot filter (supplied as either one-piece weighted PVDF assembly or as black PP filter with ceramic weight that slides over tube)
8	SP-SK-02A	SEKO Suction tubing Clear (2 metre roll, 6mm OD/4mm ID)

COMPATIBLE MODELS	
SEKO PR-4	SEKO PR-4-PLUG

		PRODUCT:	SEKO PR-4	Revision	1
		DRAWING TYPE:	Spare Parts - Wireframe	SHEET SIZE	A3
		DRAWING No:	SEKO PR-4_ASM	SHEET	1 OF 1
NOTE		COPYRIGHT		SCALE	
Only use written dimensions. Dimensions are in Millimeters unless otherwise specified. Do not scale. If in doubt consult with Convergent Water Controls		The designs, concepts & specifications within this drawing are the property of Convergent Water Controls Pty Ltd. They must not be copied or reproduced wholly or in part without written consent from Convergent Water Controls Pty Ltd.		1:2	
FILE: C:\CWC\Library\Products From Suppliers\SEKO\Seko Pumps - Spares Drawing					
MATERIAL: Misc		MASS: 307.18 grams			