


ITEM NO.	PRODUCT CODE	DESCRIPTION
1	NE-AG-5060-S	Enclosure 600x500x180mm Grey Lid hinged. Note: does not normally come pre drilled, please specify if you require drilled for a DIGICHEM-X/3S-EMEC3A-V-CABG system
2	SP-PCB-DIGI-XP2-M	DIGICHEM-XP2 Controller Replacement Motherboard only. (Does not include enclosure base to which circuit board is normally mounted. Does not include processor PCB which is fitted in lid of enclosure)
3	SP-PCB-DIGI-XP2-P-L	DIGICHEM-XP2 Replacement Processor Board, fitted to enclosure lid, ready to plug into motherboard and screw down onto enclosure base
3A	SP-PCB-DIGI-XP2-P	DIGICHEM-XP2 Spare Processor Board (Processor board only, to be fitted inside Optional enclosure lid)
4	EMEC VCO 15 02 FP	Metering pump, wall mount, 2 l/hr @ 15 bar. FPM Viton seals - (not suitable for Caustic). For more detail see EMEC VCO 15 02 FP Spares drawing
5	EMEC VACO 10 02 FP	Metering pump, wall mount, 2 l/hr @ 10 bar, PVDF self-venting (de-gassing) head for Chlorine. For more detail see EMEC VACO 10 02 FP Spares drawing
6	SP-M-AB2-V-CVPVC	Manifold for Digichem system - Includes Plastic PVC check valve and sample valve. Supplied without probe, solenoid valve, injection valves, third injection point & hosedails. For more detail refer to MAN 2P-V-S-CVPVC Assembly Drawing
7	SP-DCON-PB10AT-PL	1.5m TDS Probe Lead Only & IP68 Connector
7A	SP-DCON-P10AT-PL	Old Style TDS probe lead to suit TDS Probe SP-DCON-P10AT-P or DCON-P10AT-P, 1.5m long (Includes old style metal connector fitted to lead)
8	SP-PC-1	VUL 1" Low Dens PIPE CLIP
9	SP-M-PORT-TEE-M-F	3rd Injection port to retrofit to manifold outlet (ie. Tee for 1/2" Injection valve with M & F ports) - does not include injection valve.

COMPATIBLE MODELS	
DIGICHEM-X/3S-EMEC3A-V	DIGICHEM-X/3S-EMEC3A-V-CABG



PRODUCT:
DIGICHEM-X-3S-EMEC3A-V-CABG

DRAWING TYPE:
Spare Parts

DRAWING No:
DIGICHEM-X-3S-EMEC3A-V-CABG_ASM

COPYRIGHT
The designs, concepts & specifications within this drawing are the property of Convergent Water Controls Pty Ltd. They must not be copied or reproduced wholly or in part without written consent from Convergent Water Controls Pty Ltd.

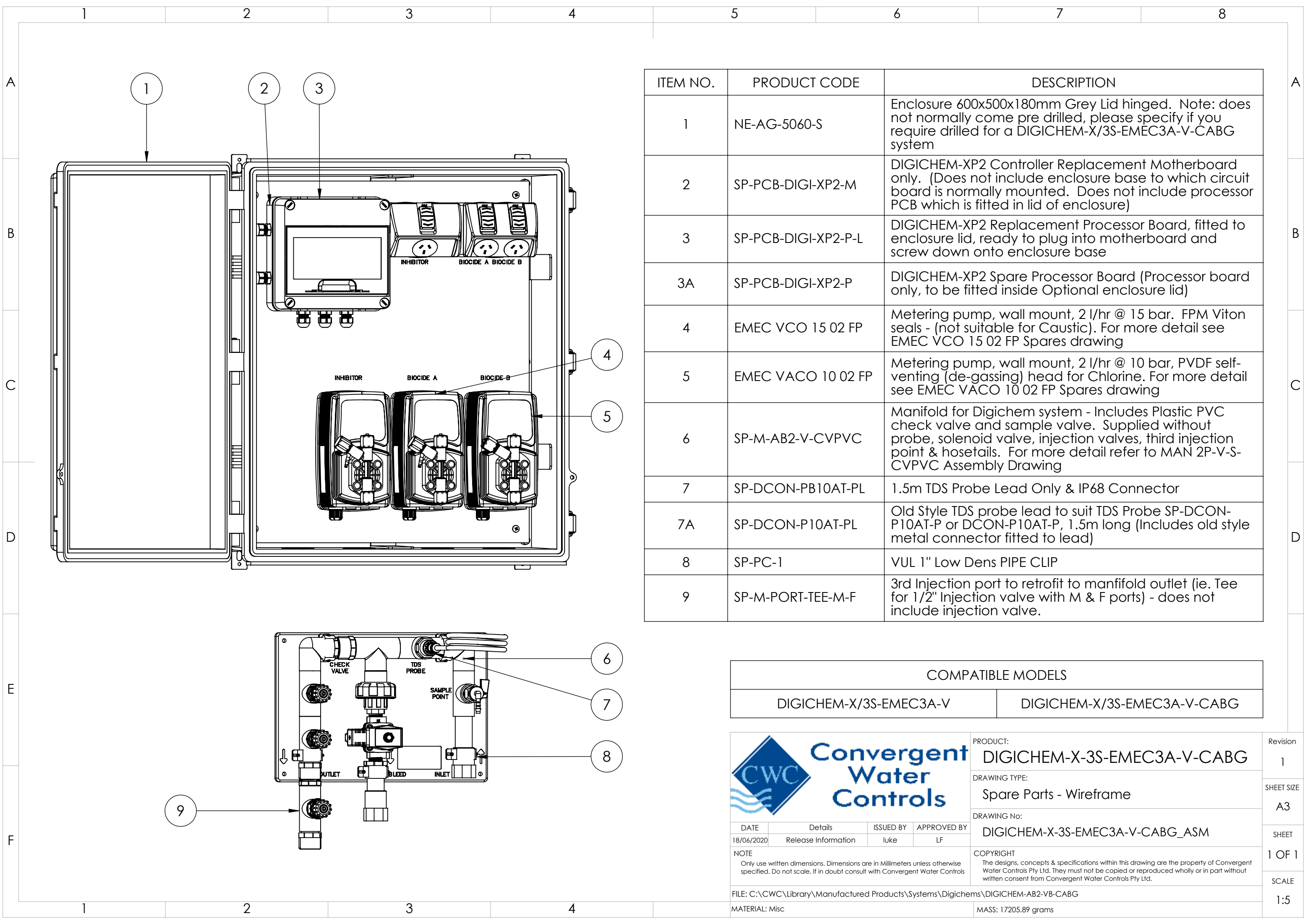
DATE	Details	ISSUED BY	APPROVED BY
18/06/2020	Release Information	luke	LF
NOTE Only use written dimensions. Dimensions are in Millimeters unless otherwise specified. Do not scale. If in doubt consult with Convergent Water Controls			
FILE: C:\CWC\Library\Manufactured Products\System\Digichems\DIGICHEM-AB2-VB-CABG			
MATERIAL: Misc			

Revision
1

SHEET SIZE
A3


SHEET
1 OF 1

SCALE
1:5



ITEM NO.	PRODUCT CODE	DESCRIPTION
1	NE-AG-5060-S	Enclosure 600x500x180mm Grey Lid hinged. Note: does not normally come pre drilled, please specify if you require drilled for a DIGICHEM-X/3S-EMEC3A-V-CABG system
2	SP-PCB-DIGI-XP2-M	DIGICHEM-XP2 Controller Replacement Motherboard only. (Does not include enclosure base to which circuit board is normally mounted. Does not include processor PCB which is fitted in lid of enclosure)
3	SP-PCB-DIGI-XP2-P-L	DIGICHEM-XP2 Replacement Processor Board, fitted to enclosure lid, ready to plug into motherboard and screw down onto enclosure base
3A	SP-PCB-DIGI-XP2-P	DIGICHEM-XP2 Spare Processor Board (Processor board only, to be fitted inside Optional enclosure lid)
4	EMEC VCO 15 02 FP	Metering pump, wall mount, 2 l/hr @ 15 bar. FPM Viton seals - (not suitable for Caustic). For more detail see EMEC VCO 15 02 FP Spares drawing
5	EMEC VACO 10 02 FP	Metering pump, wall mount, 2 l/hr @ 10 bar, PVDF self-venting (de-gassing) head for Chlorine. For more detail see EMEC VACO 10 02 FP Spares drawing
6	SP-M-AB2-V-CVPVC	Manifold for Digichem system - Includes Plastic PVC check valve and sample valve. Supplied without probe, solenoid valve, injection valves, third injection point & hosedails. For more detail refer to MAN 2P-V-S-CVPVC Assembly Drawing
7	SP-DCON-PB10AT-PL	1.5m TDS Probe Lead Only & IP68 Connector
7A	SP-DCON-P10AT-PL	Old Style TDS probe lead to suit TDS Probe SP-DCON-P10AT-P or DCON-P10AT-P, 1.5m long (Includes old style metal connector fitted to lead)
8	SP-PC-1	VUL 1" Low Dens PIPE CLIP
9	SP-M-PORT-TEE-M-F	3rd Injection port to retrofit to manifold outlet (ie. Tee for 1/2" Injection valve with M & F ports) - does not include injection valve.

COMPATIBLE MODELS	
DIGICHEM-X/3S-EMEC3A-V	DIGICHEM-X/3S-EMEC3A-V-CABG



PRODUCT:
DIGICHEM-X-3S-EMEC3A-V-CABG

DRAWING TYPE:
Spare Parts - Wireframe

DRAWING No:
DIGICHEM-X-3S-EMEC3A-V-CABG_ASM

COPYRIGHT
The designs, concepts & specifications within this drawing are the property of Convergent Water Controls Pty Ltd. They must not be copied or reproduced wholly or in part without written consent from Convergent Water Controls Pty Ltd.

DATE 18/06/2020	Details Release Information	ISSUED BY luke	APPROVED BY LF
NOTE Only use written dimensions. Dimensions are in Millimeters unless otherwise specified. Do not scale. If in doubt consult with Convergent Water Controls			
FILE: C:\CWC\Library\Manufactured Products\System\Digichems\DIGICHEM-AB2-VB-CABG			
MATERIAL: Misc			

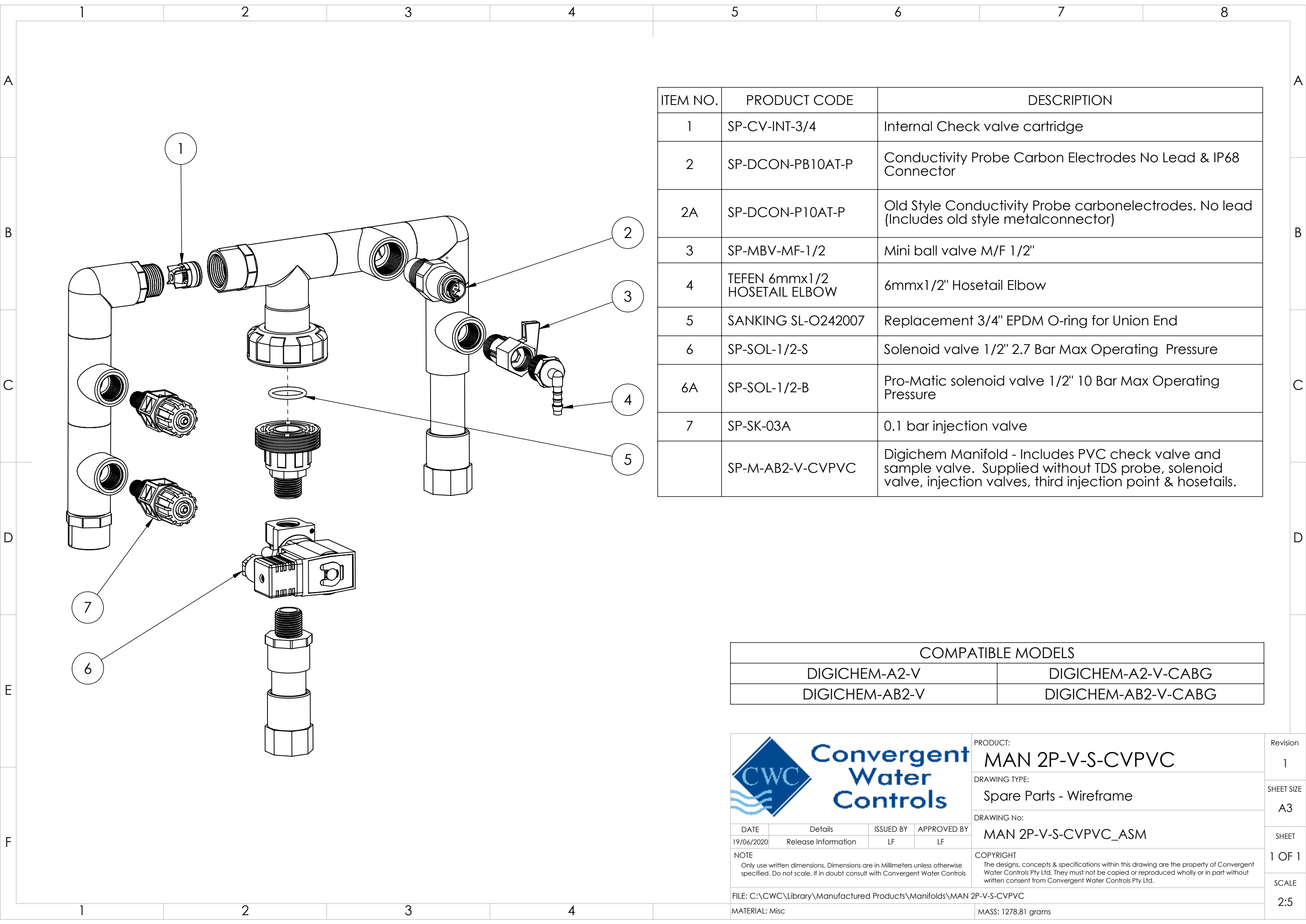
Revision
1

SHEET SIZE
A3

SHEET
1 OF 1

SCALE
1:5

MASS: 17205.89 grams



ITEM NO.	PRODUCT CODE	DESCRIPTION
1	SP-CV-INT-3/4	Internal Check valve cartridge
2	SP-DCON-PB10AT-P	Conductivity Probe Carbon Electrodes No Lead & IP68 Connector
2A	SP-DCON-P10AT-P	Old Style Conductivity Probe carbonelectrodes. No lead (Includes old style metalconnector)
3	SP-MBV-MF-1/2	Mini ball valve M/F 1/2"
4	TEFEN 6mmx1/2 HOSETAIL ELBOW	6mmx1/2" Hosetail Elbow
5	SANKING SL-O242007	Replacement 3/4" EPDM O-ring for Union End
6	SP-SOL-1/2-S	Solenoid valve 1/2" 2.7 Bar Max Operating Pressure
6A	SP-SOL-1/2-B	Pro-Matic solenoid valve 1/2" 10 Bar Max Operating Pressure
7	SP-SK-03A	0.1 bar injection valve
	SP-M-AB2-V-CVPVC	Digichem Manifold - Includes PVC check valve and sample valve. Supplied without TDS probe, solenoid valve, injection valves, third injection point & hosetails.

COMPATIBLE MODELS	
DIGICHEM-A2-V	DIGICHEM-A2-V-CABG
DIGICHEM-AB2-V	DIGICHEM-AB2-V-CABG



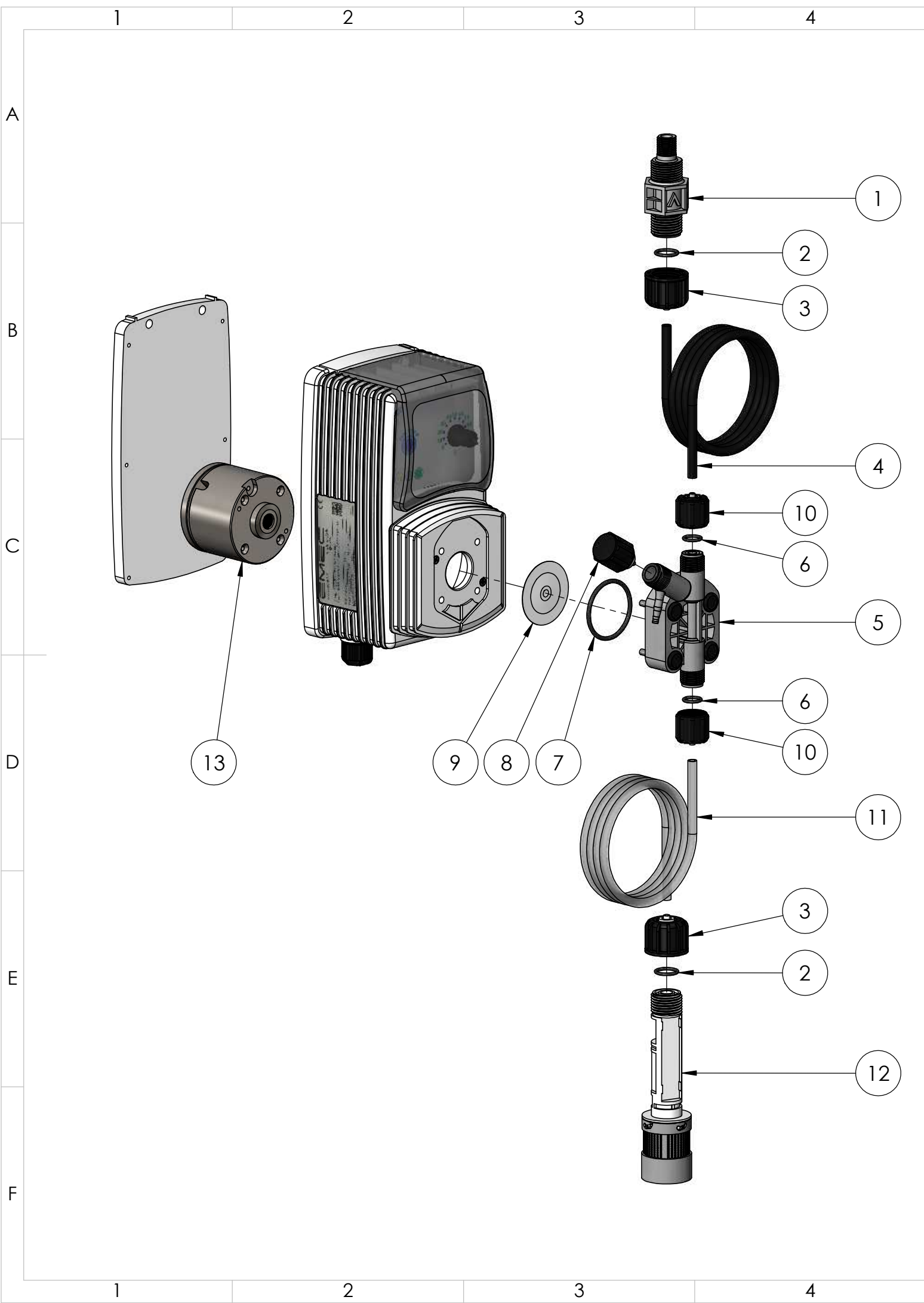
PRODUCT: **MAN 2P-V-S-CVPVC**

DRAWING TYPE: **Spare Parts - Wireframe**

DRAWING No: **MAN 2P-V-S-CVPVC_ASM**


COPYRIGHT
The designs, concepts & specifications within this drawing are the property of Convergent Water Controls Pty Ltd. They must not be copied or reproduced wholly or in part without written consent from Convergent Water Controls Pty Ltd.

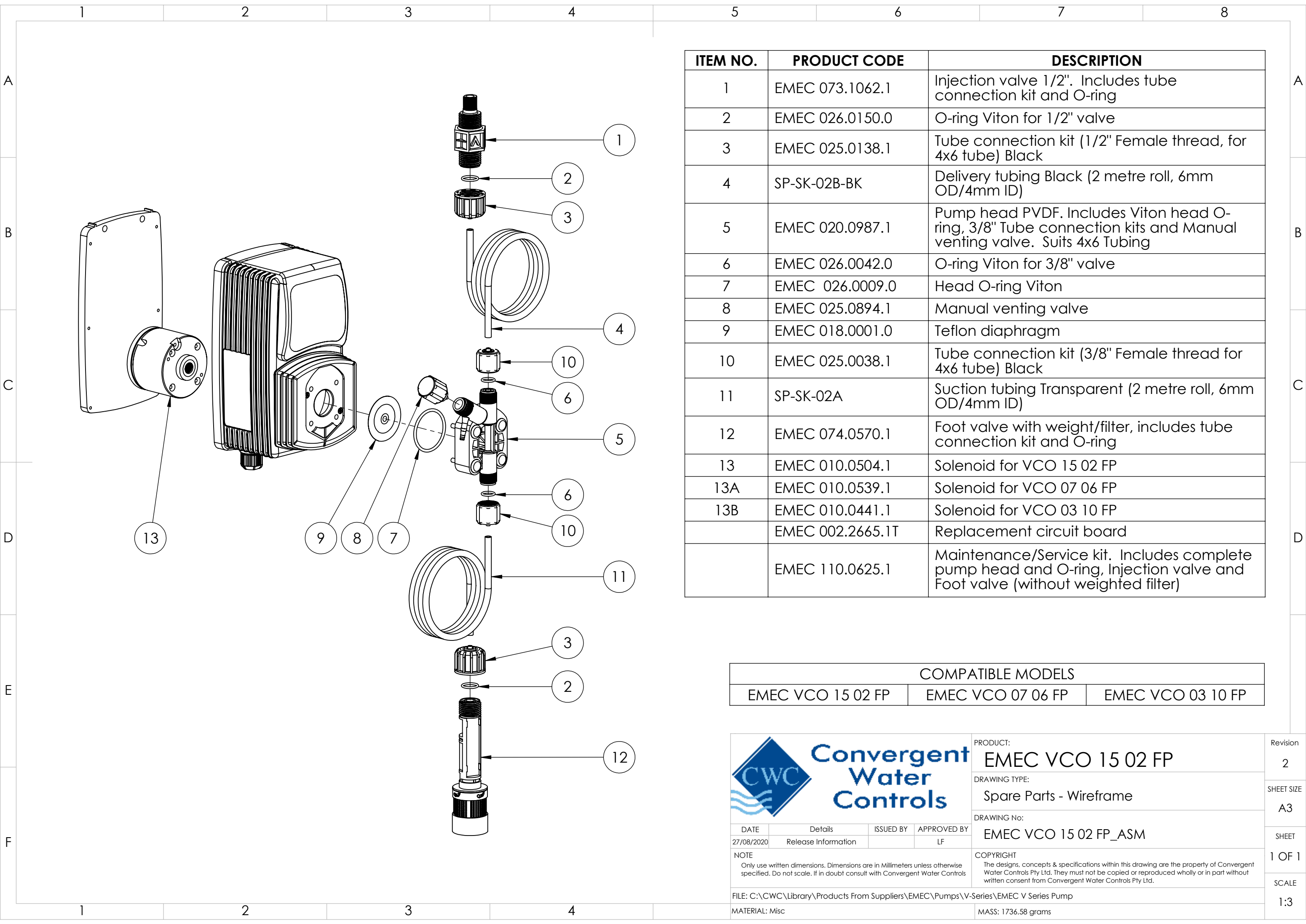
DATE	Details	ISSUED BY	APPROVED BY	Revision
19/06/2020	Release Information	LF	LF	1
NOTE Only use written dimensions. Dimensions are in Millimeters unless otherwise specified. Do not scale. If in doubt consult with Convergent Water Controls				SHEET 1 OF 1
FILE: C:\CWC\Library\Manufactured Products\Manifolds\MAN 2P-V-S-CVPVC				SCALE 2:5
MATERIAL: Misc				MASS: 1278.81 grams



ITEM NO.	PRODUCT CODE	DESCRIPTION
1	EMEC 073.1062.1	Injection valve 1/2". Includes tube connection kit and O-ring
2	EMEC 026.0150.0	O-ring Viton for 1/2" valve
3	EMEC 025.0138.1	Tube connection kit (1/2" Female thread, for 4x6 tube) Black
4	SP-SK-02B-BK	Delivery tubing Black (2 metre roll, 6mm OD/4mm ID)
5	EMEC 020.0987.1	Pump head PVDF. Includes Viton head O-ring, 3/8" Tube connection kits and Manual venting valve. Suits 4x6 Tubing
6	EMEC 026.0042.0	O-ring Viton for 3/8" valve
7	EMEC 026.0009.0	Head O-ring Viton
8	EMEC 025.0894.1	Manual venting valve
9	EMEC 018.0001.0	Teflon diaphragm
10	EMEC 025.0038.1	Tube connection kit (3/8" Female thread for 4x6 tube) Black
11	SP-SK-02A	Suction tubing Transparent (2 metre roll, 6mm OD/4mm ID)
12	EMEC 074.0570.1	Foot valve with weight/filter, includes tube connection kit and O-ring
13	EMEC 010.0504.1	Solenoid for VCO 15 02 FP
13A	EMEC 010.0539.1	Solenoid for VCO 07 06 FP
13B	EMEC 010.0441.1	Solenoid for VCO 03 10 FP
	EMEC 002.2665.1T	Replacement circuit board
	EMEC 110.0625.1	Maintenance/Service kit. Includes complete pump head and O-ring, Injection valve and Foot valve (without weighted filter)


COMPATIBLE MODELS		
EMEC VCO 15 02 FP	EMEC VCO 07 06 FP	EMEC VCO 03 10 FP

		PRODUCT:	EMEC VCO 15 02 FP	Revision	2
		DRAWING TYPE:	Spare Parts	SHEET SIZE	A3
		DRAWING No:	EMEC VCO 15 02 FP_ASM	SHEET	1 OF 1
		NOTE	COPYRIGHT The designs, concepts & specifications within this drawing are the property of Convergent Water Controls Pty Ltd. They must not be copied or reproduced wholly or in part without written consent from Convergent Water Controls Pty Ltd.		
		FILE: C:\CWC\Library\Products From Suppliers\EMEC\Pumps\V-Series\EMEC V Series Pump			
		MATERIAL: Misc	MASS: 1736.58 grams		
					SCALE 1:3



ITEM NO.	PRODUCT CODE	DESCRIPTION
1	EMEC 073.1062.1	Injection valve 1/2". Includes tube connection kit and O-ring
2	EMEC 026.0150.0	O-ring Viton for 1/2" valve
3	EMEC 025.0138.1	Tube connection kit (1/2" Female thread, for 4x6 tube) Black
4	SP-SK-02B-BK	Delivery tubing Black (2 metre roll, 6mm OD/4mm ID)
5	EMEC 020.0987.1	Pump head PVDF. Includes Viton head O-ring, 3/8" Tube connection kits and Manual venting valve. Suits 4x6 Tubing
6	EMEC 026.0042.0	O-ring Viton for 3/8" valve
7	EMEC 026.0009.0	Head O-ring Viton
8	EMEC 025.0894.1	Manual venting valve
9	EMEC 018.0001.0	Teflon diaphragm
10	EMEC 025.0038.1	Tube connection kit (3/8" Female thread for 4x6 tube) Black
11	SP-SK-02A	Suction tubing Transparent (2 metre roll, 6mm OD/4mm ID)
12	EMEC 074.0570.1	Foot valve with weight/filter, includes tube connection kit and O-ring
13	EMEC 010.0504.1	Solenoid for VCO 15 02 FP
13A	EMEC 010.0539.1	Solenoid for VCO 07 06 FP
13B	EMEC 010.0441.1	Solenoid for VCO 03 10 FP
	EMEC 002.2665.1T	Replacement circuit board
	EMEC 110.0625.1	Maintenance/Service kit. Includes complete pump head and O-ring, Injection valve and Foot valve (without weighted filter)

COMPATIBLE MODELS		
EMEC VCO 15 02 FP	EMEC VCO 07 06 FP	EMEC VCO 03 10 FP



PRODUCT:
EMEC VCO 15 02 FP

DRAWING TYPE:
Spare Parts - Wireframe

DRAWING No:
EMEC VCO 15 02 FP_ASM

COPYRIGHT
The designs, concepts & specifications within this drawing are the property of Convergent Water Controls Pty Ltd. They must not be copied or reproduced wholly or in part without written consent from Convergent Water Controls Pty Ltd.

Revision
2

SHEET SIZE
A3

SHEET
1 OF 1

SCALE
1:3

DATE	Details	ISSUED BY	APPROVED BY
27/08/2020	Release Information		LF
NOTE Only use written dimensions. Dimensions are in Millimeters unless otherwise specified. If in doubt consult with Convergent Water Controls			
FILE: C:\CWC\Library\Products From Suppliers\EMEC\Pumps\V-Series\EMEC V Series Pump			
MATERIAL: Misc		MASS: 1736.58 grams	