
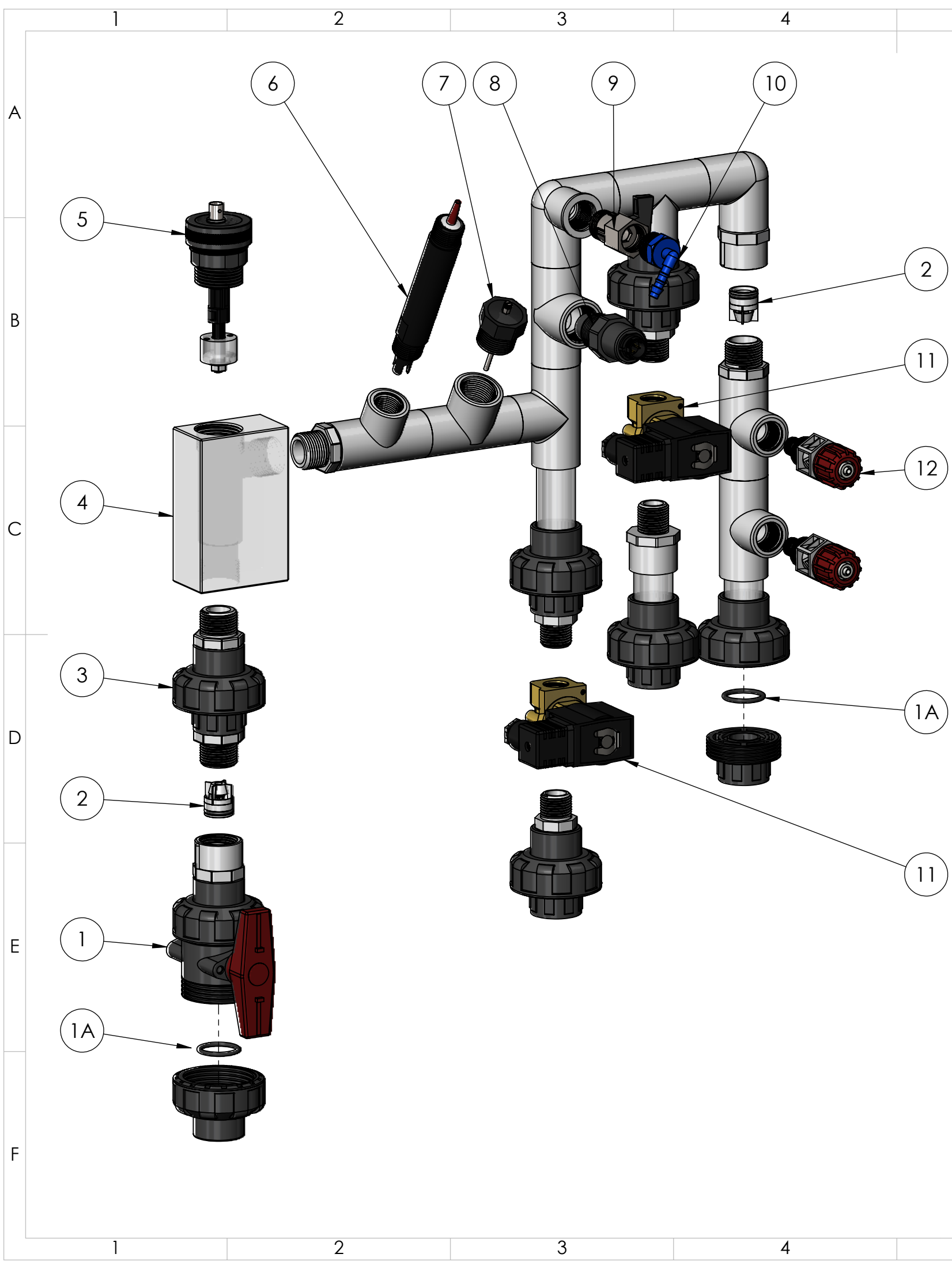


ITEM NO.	PRODUCT CODE	DESCRIPTION
1	NE-AG-5060	Enclosure 530x630x255mm Grey lid Hinged. Note: does not normally come pre drilled, please specify if you require drilled for a Digi-ORP system
2	SP-SK-PE-1.3-G	Replacement SEKO PE-1.3 pump, supplied without any accessories. For more detailed drawing of individual pump parts see SEKO PE-1.3-FP-T Spares Drawing
3	SP-PCB-DIGI-ORP-XP2-M	DIGICHEM-ORP-XP2 Controller Replacement Motherboard only. (Does not include enclosure base to which circuit board is normally mounted. Does not include processor PCB which is fitted in lid of enclosure)
4	SP-PCB-DIGI-ORP-XP2-P-L	DIGICHEM-ORP-XP2 Replacement Processor Board, fitted to enclosure lid, ready to plug into motherboard and screw down onto enclosure base
4A	SP-PCB-DIGI-ORP-XP2-P	DIGICHEM-ORP-XP2 Spare Processor Board (Processor board only, to be fitted inside Existing enclosure lid)
5	MAN DIGI-RX2A-B	Replacement Manifold for DIGI-AB2RX2A-B or HCTC-CA-RXB-HC2 systems. Includes flow switch, ground probe, 2 solenoid valves and 2 injection valves. Does not include TDS or ORP probes, pipe clips or PVC backboard. For more detailed drawing of individual manifold parts see MAN DIGI-RX2A-P Spares Drawing
6	SP-DCON-PB10AT-PL-0.75m	TDS probe lead to suit TDS Probe SP-DCON-PB10AT-P or DCON-PB10AT-P, 0.75m long (Includes IP68 connector fitted to lead)
7	SP-PC-1	VUL 1" Low Dens PIPE CLIP

COMPATIBLE MODELS	
DIGI-AB2RX2A-B	DIGI-AB2RX2A-B-CABG

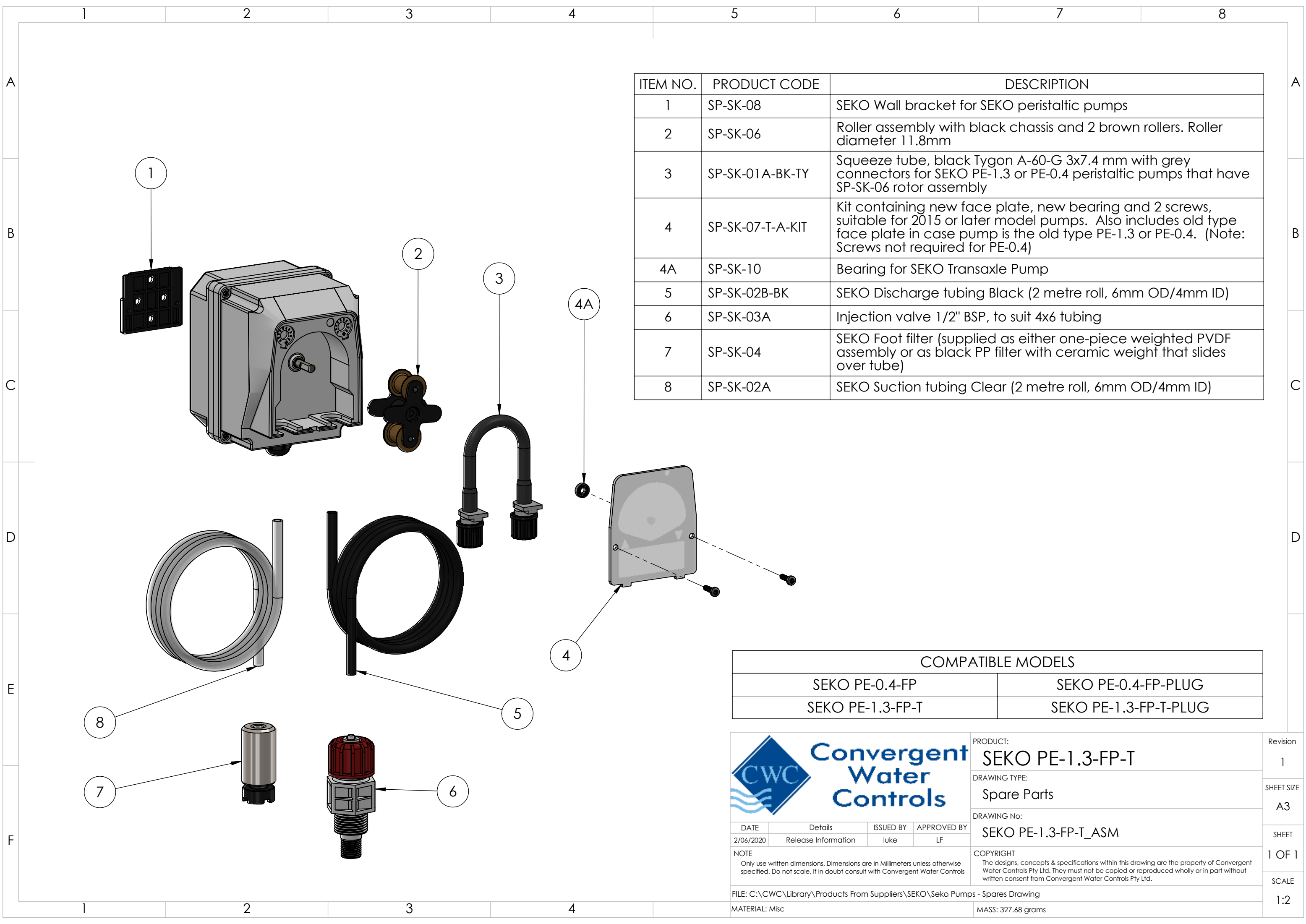
	PRODUCT:	DIGI-AB2RX2A-B-CABG	Revision
	DRAWING TYPE:	Spare Parts	1
DATE: 19/06/2020 Details: Release Information ISSUED BY: LF APPROVED BY: LF	DRAWING No:	DIGI-AB2RX2A-B-CABG_ASM	SHEET SIZE
	COPYRIGHT	The designs, concepts & specifications within this drawing are the property of Convergent Water Controls Pty Ltd. They must not be copied or reproduced wholly or in part without written consent from Convergent Water Controls Pty Ltd.	A3
FILE: C:\CWC\Library\Manufactured Products\System\DIGI-ORP\DIGI-AB2RX2A-P	MATERIAL: Misc	MASS: 15355.51 grams	SHEET
			1 OF 1
			SCALE
			1:5



ITEM NO.	PRODUCT CODE	DESCRIPTION
1	SP-M-BV-20-TU	True Union Ball Valve, 20mm solvent weld (Grey PVC body, red handle)
1A	SANKING SL-O242007	Replacement 3/4" EPDM O-ring for Union End
2	SP-CV-INT-3/4	Internal Check valve cartridge
3	SANKING SL-242007	Barrel Union 20mm
4	EMEC 031.0454.0	PMMA Flow Switch Block
5	EMEC 108.1615.1	Flow switch float (includes 2m 2-core lead)
6	WA OPF10-PBN10-1.5m	General purpose platinum ORP Sensor, single junction, 1/2" MNPT, 1.5 metre cable BNC. Supplied loose in wetted cap
7	SP-DCON-CMR	Ground probe for ORP/pH System - 3/4" BSP process connection
8	SP-DCON-PB10AT-P	Conductivity Probe, Carbon Electrodes & IP68 Connector. No Lead
9	SP-MBV-MF-1/2	Mini ball valve M/F 1/2"
10	TEFEN 6mmx1/2 HOSETAIL ELBOW	6mmx1/2" Hosetail Elbow
11	SP-SOL-1/2-S	Solenoid valve 1/2" 2.7 Bar Max Operating Pressure
11A	SP-SOL-1/2-B	Pro-Matic solenoid valve 1/2" 10 Bar Max Operating Pressure
12	SP-SK-03A	0.1 bar injection valve
	MAN DIGI-RX2A-B	Manifold for DIGI-AB2RX2A-B. Includes flow switch, ground probe, 2 solenoid valves, sample point, PVC check valve and 2 injection valves. Does not include TDS or ORP probes, pipe clips or PVC backboard

COMPATIBLE MODELS	
DIGI-AB2RX2A-B	DIGI-AB2RX2A-B-CABG

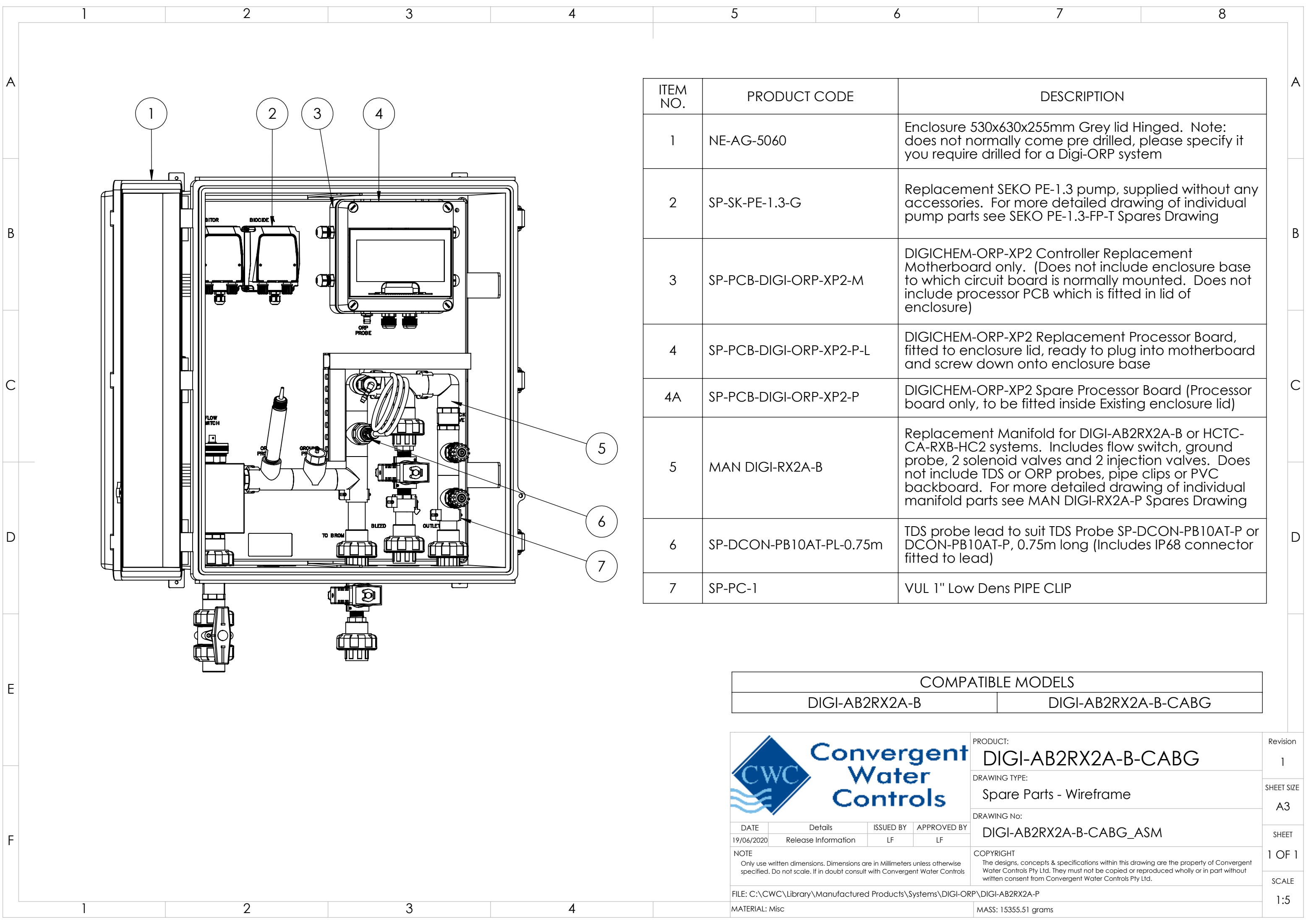
		PRODUCT:	MAN DIGI-RX2A-B	Revision	1
		DRAWING TYPE:	Spare Parts	SHEET SIZE	A3
		DRAWING No:	MAN DIGI-RX2A-B_ASM	SHEET	1 OF 1
		COPYRIGHT	The designs, concepts & specifications within this drawing are the property of Convergent Water Controls Pty Ltd. They must not be copied or reproduced wholly or in part without written consent from Convergent Water Controls Pty Ltd.		
		FILE:	C:\CWC\Library\Manufactured Products\Manifolds\MAN-DIGI-RX2A-B		
		MATERIAL:	Misc	MASS:	3022.66 grams



ITEM NO.	PRODUCT CODE	DESCRIPTION
1	SP-SK-08	SEKO Wall bracket for SEKO peristaltic pumps
2	SP-SK-06	Roller assembly with black chassis and 2 brown rollers. Roller diameter 11.8mm
3	SP-SK-01A-BK-TY	Squeeze tube, black Tygon A-60-G 3x7.4 mm with grey connectors for SEKO PE-1.3 or PE-0.4 peristaltic pumps that have SP-SK-06 rotor assembly
4	SP-SK-07-T-A-KIT	Kit containing new face plate, new bearing and 2 screws, suitable for 2015 or later model pumps. Also includes old type face plate in case pump is the old type PE-1.3 or PE-0.4. (Note: Screws not required for PE-0.4)
4A	SP-SK-10	Bearing for SEKO Transaxle Pump
5	SP-SK-02B-BK	SEKO Discharge tubing Black (2 metre roll, 6mm OD/4mm ID)
6	SP-SK-03A	Injection valve 1/2" BSP, to suit 4x6 tubing
7	SP-SK-04	SEKO Foot filter (supplied as either one-piece weighted PVDF assembly or as black PP filter with ceramic weight that slides over tube)
8	SP-SK-02A	SEKO Suction tubing Clear (2 metre roll, 6mm OD/4mm ID)

COMPATIBLE MODELS	
SEKO PE-0.4-FP	SEKO PE-0.4-FP-PLUG
SEKO PE-1.3-FP-T	SEKO PE-1.3-FP-T-PLUG

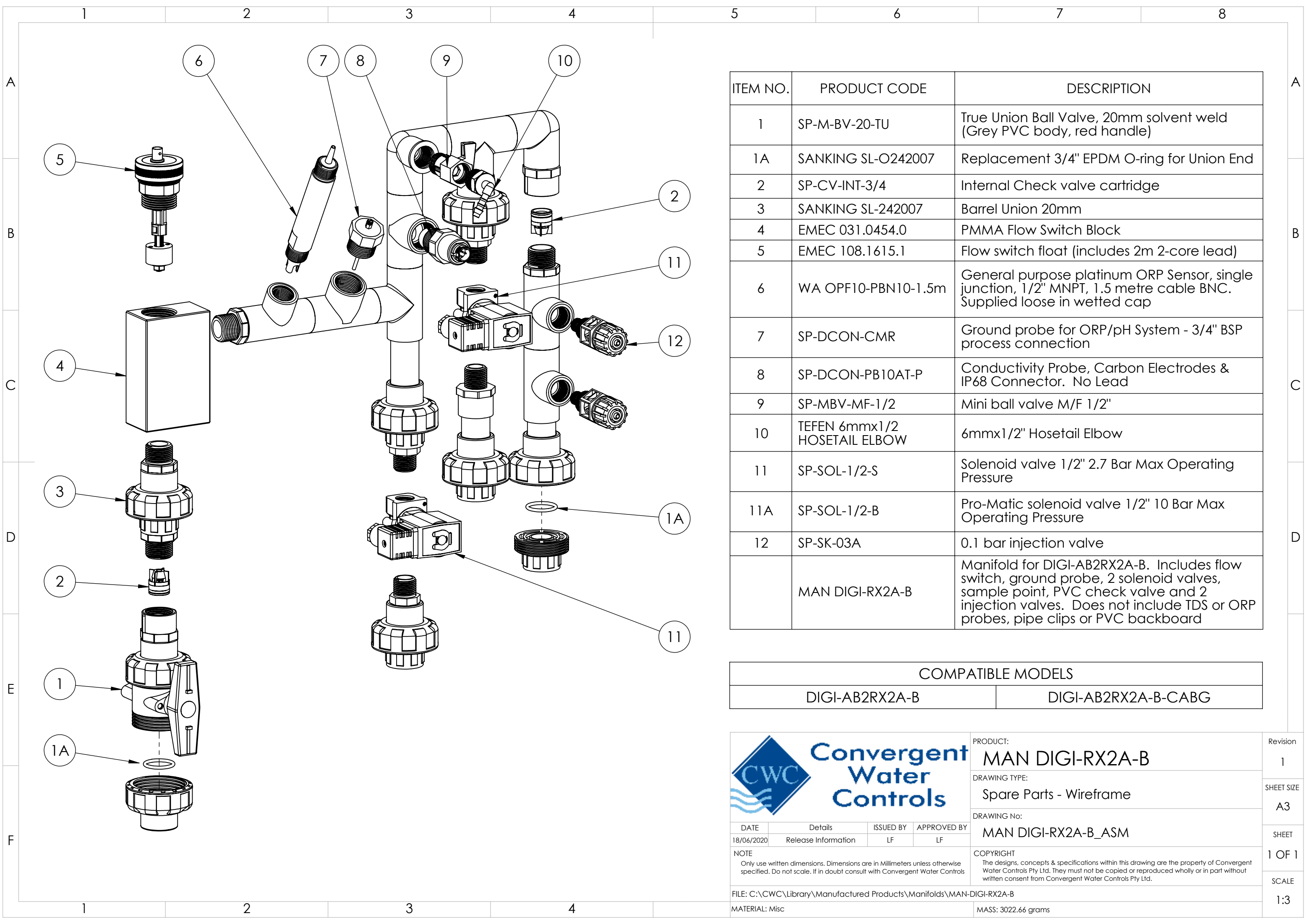
		PRODUCT:	SEKO PE-1.3-FP-T	Revision	1
		DRAWING TYPE:	Spare Parts	SHEET SIZE	A3
		DRAWING No:	SEKO PE-1.3-FP-T_ASM	SHEET	1 OF 1
		NOTE	COPYRIGHT The designs, concepts & specifications within this drawing are the property of Convergent Water Controls Pty Ltd. They must not be copied or reproduced wholly or in part without written consent from Convergent Water Controls Pty Ltd.		
		FILE: C:\CWC\Library\Products From Suppliers\SEKO\Seko Pumps - Spares Drawing			
		MATERIAL: Misc	MASS: 327.68 grams		
					SCALE 1:2



ITEM NO.	PRODUCT CODE	DESCRIPTION
1	NE-AG-5060	Enclosure 530x630x255mm Grey lid Hinged. Note: does not normally come pre drilled, please specify if you require drilled for a Digi-ORP system
2	SP-SK-PE-1.3-G	Replacement SEKO PE-1.3 pump, supplied without any accessories. For more detailed drawing of individual pump parts see SEKO PE-1.3-FP-T Spares Drawing
3	SP-PCB-DIGI-ORP-XP2-M	DIGICHEM-ORP-XP2 Controller Replacement Motherboard only. (Does not include enclosure base to which circuit board is normally mounted. Does not include processor PCB which is fitted in lid of enclosure)
4	SP-PCB-DIGI-ORP-XP2-P-L	DIGICHEM-ORP-XP2 Replacement Processor Board, fitted to enclosure lid, ready to plug into motherboard and screw down onto enclosure base
4A	SP-PCB-DIGI-ORP-XP2-P	DIGICHEM-ORP-XP2 Spare Processor Board (Processor board only, to be fitted inside Existing enclosure lid)
5	MAN DIGI-RX2A-B	Replacement Manifold for DIGI-AB2RX2A-B or HCTC-CA-RXB-HC2 systems. Includes flow switch, ground probe, 2 solenoid valves and 2 injection valves. Does not include TDS or ORP probes, pipe clips or PVC backboard. For more detailed drawing of individual manifold parts see MAN DIGI-RX2A-P Spares Drawing
6	SP-DCON-PB10AT-PL-0.75m	TDS probe lead to suit TDS Probe SP-DCON-PB10AT-P or DCON-PB10AT-P, 0.75m long (Includes IP68 connector fitted to lead)
7	SP-PC-1	VUL 1" Low Dens PIPE CLIP

COMPATIBLE MODELS	
DIGI-AB2RX2A-B	DIGI-AB2RX2A-B-CABG

<div></div> <div>Convergent Water Controls</div>				PRODUCT: <div>DIGI-AB2RX2A-B-CABG</div>	Revision <div>1</div>
				DRAWING TYPE: <div>Spare Parts - Wireframe</div>	SHEET SIZE <div>A3</div>
				DRAWING No: <div>DIGI-AB2RX2A-B-CABG_ASM</div>	SHEET <div>1 OF 1</div>
				COPYRIGHT <div>The designs, concepts & specifications within this drawing are the property of Convergent Water Controls Pty Ltd. They must not be copied or reproduced wholly or in part without written consent from Convergent Water Controls Pty Ltd.</div>	
DATE <div>19/06/2020</div>	Details <div>Release Information</div>	ISSUED BY <div>LF</div>	APPROVED BY <div>LF</div>	FILE: C:\CWC\Library\Manufactured Products\System\DIGI-ORP\DIGI-AB2RX2A-P	
NOTE <div>Only use written dimensions. Dimensions are in Millimeters unless otherwise specified. Do not scale. If in doubt consult with Convergent Water Controls</div>				MATERIAL: Misc	
				MASS: 15355.51 grams	



ITEM NO.	PRODUCT CODE	DESCRIPTION
1	SP-M-BV-20-TU	True Union Ball Valve, 20mm solvent weld (Grey PVC body, red handle)
1A	SANKING SL-O242007	Replacement 3/4" EPDM O-ring for Union End
2	SP-CV-INT-3/4	Internal Check valve cartridge
3	SANKING SL-242007	Barrel Union 20mm
4	EMEC 031.0454.0	PMMA Flow Switch Block
5	EMEC 108.1615.1	Flow switch float (includes 2m 2-core lead)
6	WA OPF10-PBN10-1.5m	General purpose platinum ORP Sensor, single junction, 1/2" MNPT, 1.5 metre cable BNC. Supplied loose in wetted cap
7	SP-DCON-CMR	Ground probe for ORP/pH System - 3/4" BSP process connection
8	SP-DCON-PB10AT-P	Conductivity Probe, Carbon Electrodes & IP68 Connector. No Lead
9	SP-MBV-MF-1/2	Mini ball valve M/F 1/2"
10	TEFEN 6mmx1/2 HOSETAIL ELBOW	6mmx1/2" Hoesail Elbow
11	SP-SOL-1/2-S	Solenoid valve 1/2" 2.7 Bar Max Operating Pressure
11A	SP-SOL-1/2-B	Pro-Matic solenoid valve 1/2" 10 Bar Max Operating Pressure
12	SP-SK-03A	0.1 bar injection valve
	MAN DIGI-RX2A-B	Manifold for DIGI-AB2RX2A-B. Includes flow switch, ground probe, 2 solenoid valves, sample point, PVC check valve and 2 injection valves. Does not include TDS or ORP probes, pipe clips or PVC backboard

COMPATIBLE MODELS	
DIGI-AB2RX2A-B	DIGI-AB2RX2A-B-CABG



PRODUCT:
MAN DIGI-RX2A-B

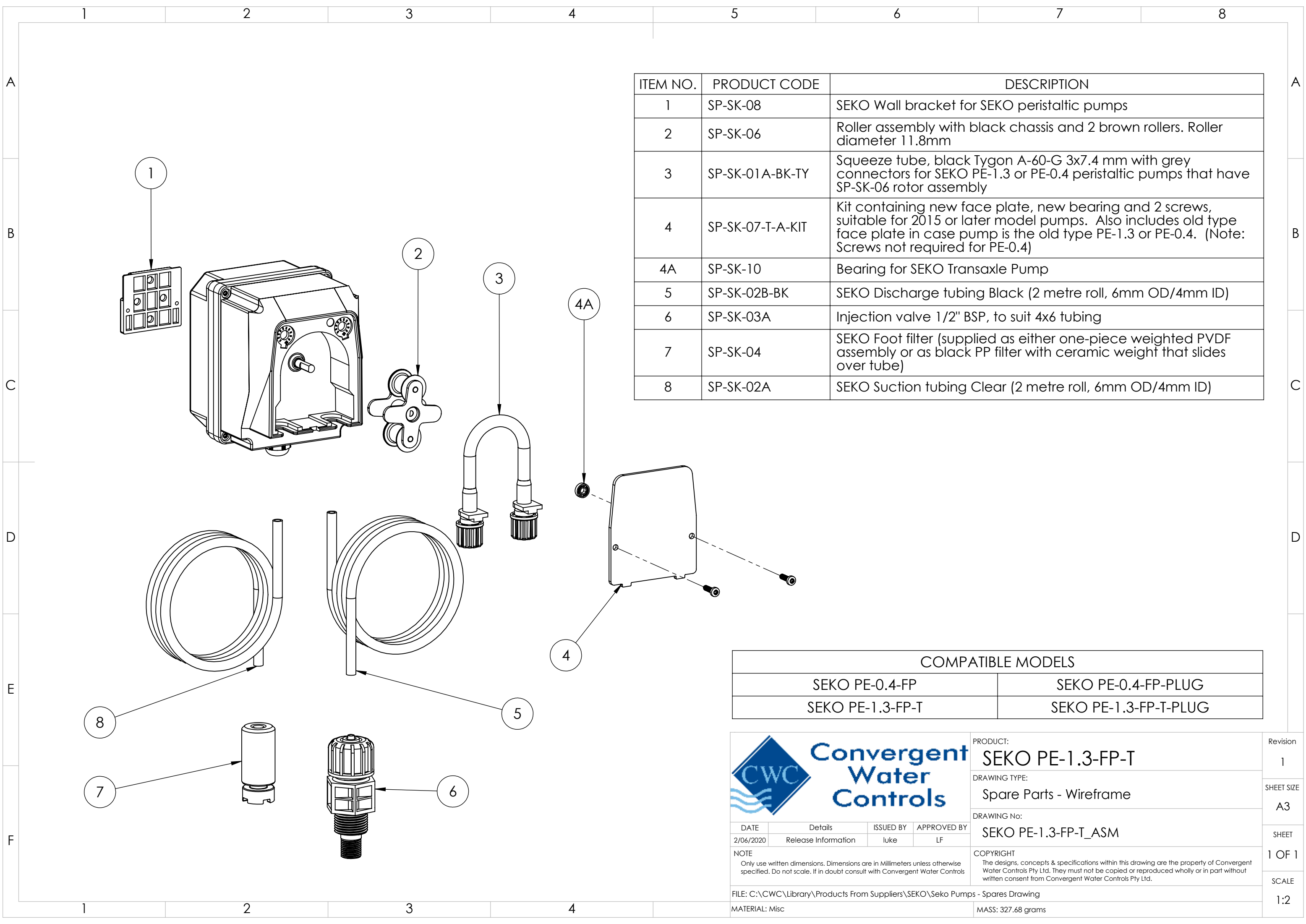
DRAWING TYPE:
Spare Parts - Wireframe

DRAWING No:
MAN DIGI-RX2A-B_ASM

COPYRIGHT
The designs, concepts & specifications within this drawing are the property of Convergent Water Controls Pty Ltd. They must not be copied or reproduced wholly or in part without written consent from Convergent Water Controls Pty Ltd.

DATE 18/06/2020	Details Release Information	ISSUED BY LF	APPROVED BY LF
NOTE Only use written dimensions. Dimensions are in Millimeters unless otherwise specified. If in doubt consult with Convergent Water Controls			
FILE: C:\CWC\Library\Manufactured Products\Manifolds\MAN-DIGI-RX2A-B			
MATERIAL: Misc			

Revision 1
SHEET SIZE A3
SHEET 1 OF 1
SCALE 1:3



ITEM NO.	PRODUCT CODE	DESCRIPTION
1	SP-SK-08	SEKO Wall bracket for SEKO peristaltic pumps
2	SP-SK-06	Roller assembly with black chassis and 2 brown rollers. Roller diameter 11.8mm
3	SP-SK-01A-BK-TY	Squeeze tube, black Tygon A-60-G 3x7.4 mm with grey connectors for SEKO PE-1.3 or PE-0.4 peristaltic pumps that have SP-SK-06 rotor assembly
4	SP-SK-07-T-A-KIT	Kit containing new face plate, new bearing and 2 screws, suitable for 2015 or later model pumps. Also includes old type face plate in case pump is the old type PE-1.3 or PE-0.4. (Note: Screws not required for PE-0.4)
4A	SP-SK-10	Bearing for SEKO Transaxle Pump
5	SP-SK-02B-BK	SEKO Discharge tubing Black (2 metre roll, 6mm OD/4mm ID)
6	SP-SK-03A	Injection valve 1/2" BSP, to suit 4x6 tubing
7	SP-SK-04	SEKO Foot filter (supplied as either one-piece weighted PVDF assembly or as black PP filter with ceramic weight that slides over tube)
8	SP-SK-02A	SEKO Suction tubing Clear (2 metre roll, 6mm OD/4mm ID)

COMPATIBLE MODELS	
SEKO PE-0.4-FP	SEKO PE-0.4-FP-PLUG
SEKO PE-1.3-FP-T	SEKO PE-1.3-FP-T-PLUG

		PRODUCT:	SEKO PE-1.3-FP-T	Revision	1
		DRAWING TYPE:	Spare Parts - Wireframe	SHEET SIZE	A3
		DRAWING No:	SEKO PE-1.3-FP-T_ASM	SHEET	1 OF 1
		NOTE	COPYRIGHT The designs, concepts & specifications within this drawing are the property of Convergent Water Controls Pty Ltd. They must not be copied or reproduced wholly or in part without written consent from Convergent Water Controls Pty Ltd.		
		FILE: C:\CWC\Library\Products From Suppliers\SEKO\Seko Pumps - Spares Drawing			
		MATERIAL: Misc	MASS: 327.68 grams		
					SCALE 1:2