



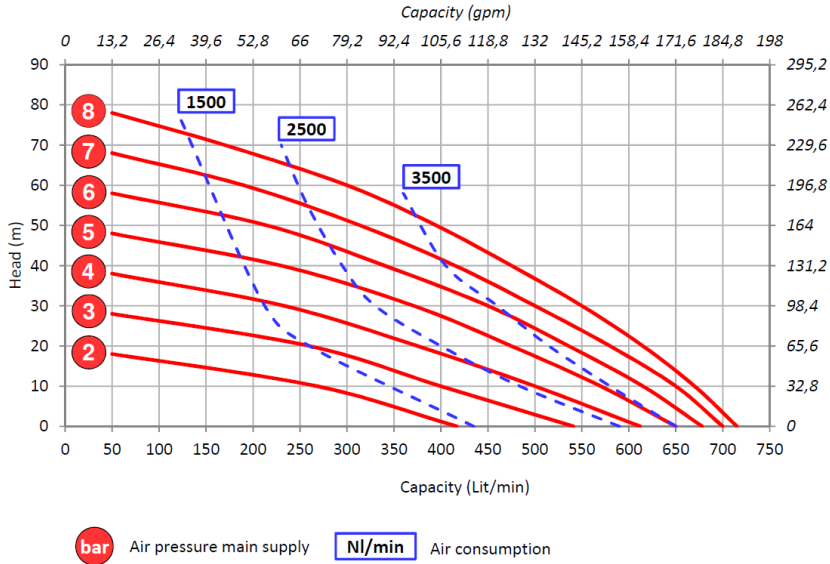
DATA SHEET

range **ASTRA evo**



model **DDE 650 WR_/FC_ (G/N)**

TAB. **5105** sheet 1/1

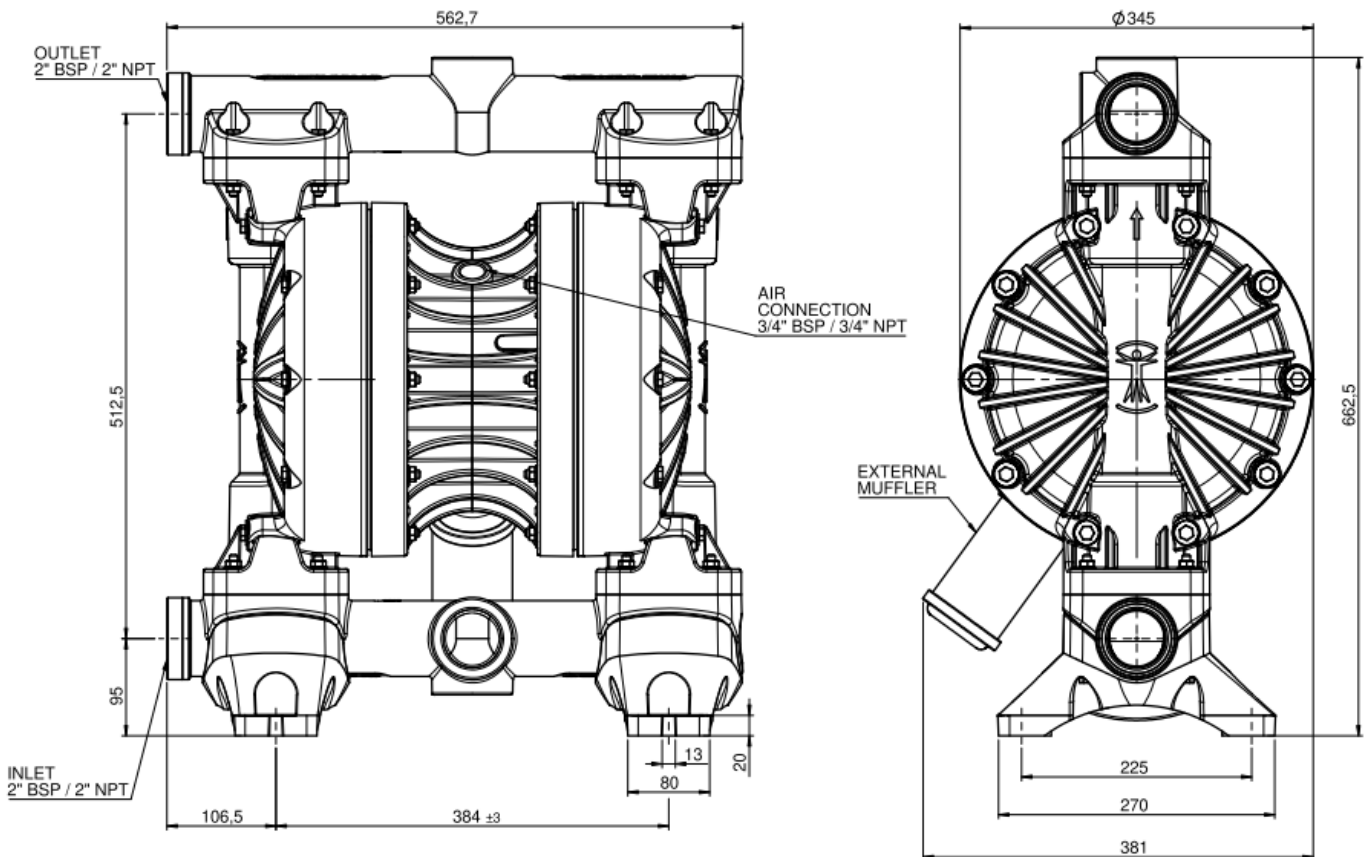


Performances based on water at ambient temperature

TECHNICAL DATA

Ratio 1:1
Maximum fluid working pressure: 8 bar
Air pressure operating range: 2÷8 bar
Maximum suction lift: 4.5 m
Maximum pumpable solid size: 9 mm
Air inlet size: 3/4" BSP / 3/4" NPT
Fluid inlet size: 2" BSP / 2" NPT
Fluid outlet size: 2" BSP / 2" NPT
Chambers material: WRN: PP reinforced glass fibre WRX: PP reinforced carbon fibre FCN - FCX: PVDF reinforced carbon fibre
Diaphragms material: TPV (Santoprene ®) TPV+PTFE TPE (Keyflex ®) TPE+PTFE
Volume per cycle: 3820 cc The data is referred to a complete cycle (the total of the two casings)
Noise: 80 dB(A)
Weight: 31 Kg (WRN / WRX) 38 Kg (FCN / FCX)
ATEX rating: WRN / FCN ⚠ II 3/3 GD c IIB T4 (zone 2) WRX / FCX ⚠ II 2/2 GD c IIB T4 (zone 1)

DIMENSIONAL DRAWING



Dimensions in mm

Rev. 1 - 08/2018