



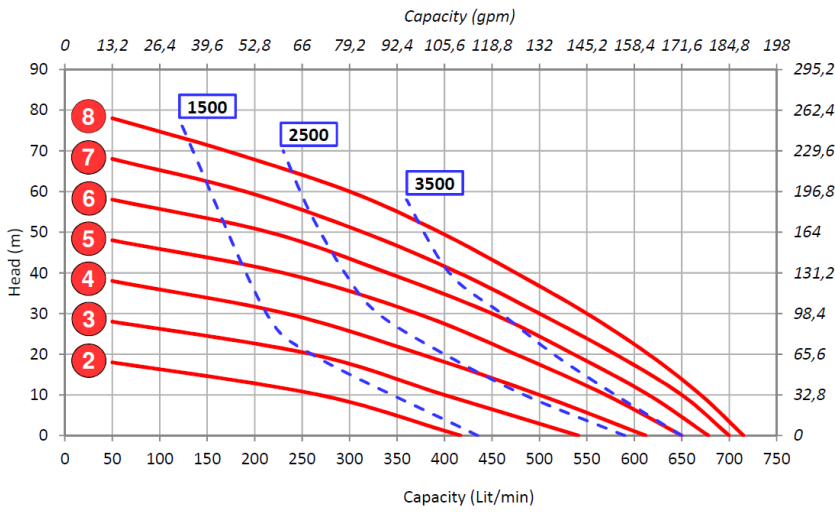
**DATA SHEET**

range **ASTRA evo**

**ARGAL AIR**

model **DDE 650 SS\_**

TAB. **5107** sheet 1/1



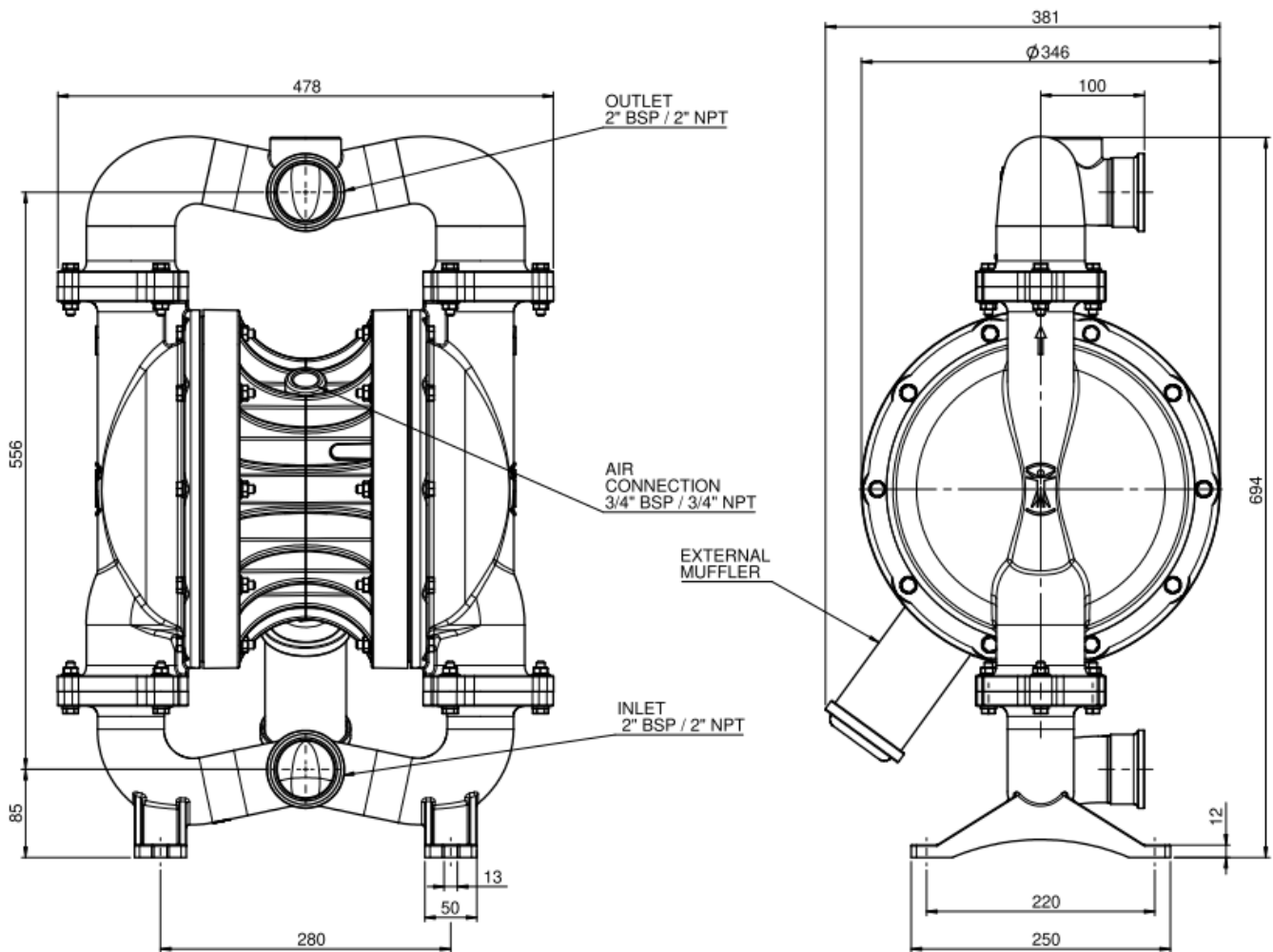
**bar** Air pressure main supply    **NI/min** Air consumption

Performances based on water at ambient temperature

**TECHNICAL DATA**

Ratio <b>1:1</b>
Maximum fluid working pressure: <b>8 bar</b>
Air pressure operating range: <b>2÷8 bar</b>
Maximum suction lift: <b>4.5 m</b>
Maximum pumpable solid size: <b>9 mm</b>
Air inlet size: <b>3/4" BSP / 3/4" NPT</b>
Fluid inlet size: <b>2" BSP / 2" NPT</b>
Fluid outlet size: <b>2" BSP / 2" NPT</b>
Chambers material: SSN –SSX: <b>AISI 316L</b>
Diaphragms material: <b>TPV</b> (Santoprene ®) <b>TPV+PTFE</b> <b>TPE</b> (Keyflex ®) <b>TPE+PTFE</b>
Volume per cycle: <b>3820 cc</b> The data is referred to a complete cycle (the total of the two casings)
Noise: <b>80 dB(A)</b>
Weight: <b>Kg</b>
ATEX rating: <b>SSN</b> Ⓜ II 3/3 GD c IIB T4 (zone 2) <b>SSX</b> Ⓜ II 2/2 GD c IIB T4 (zone 1)

**DIMENSIONAL DRAWING**



Dimensions in mm

Rev. 1 - 08/2018