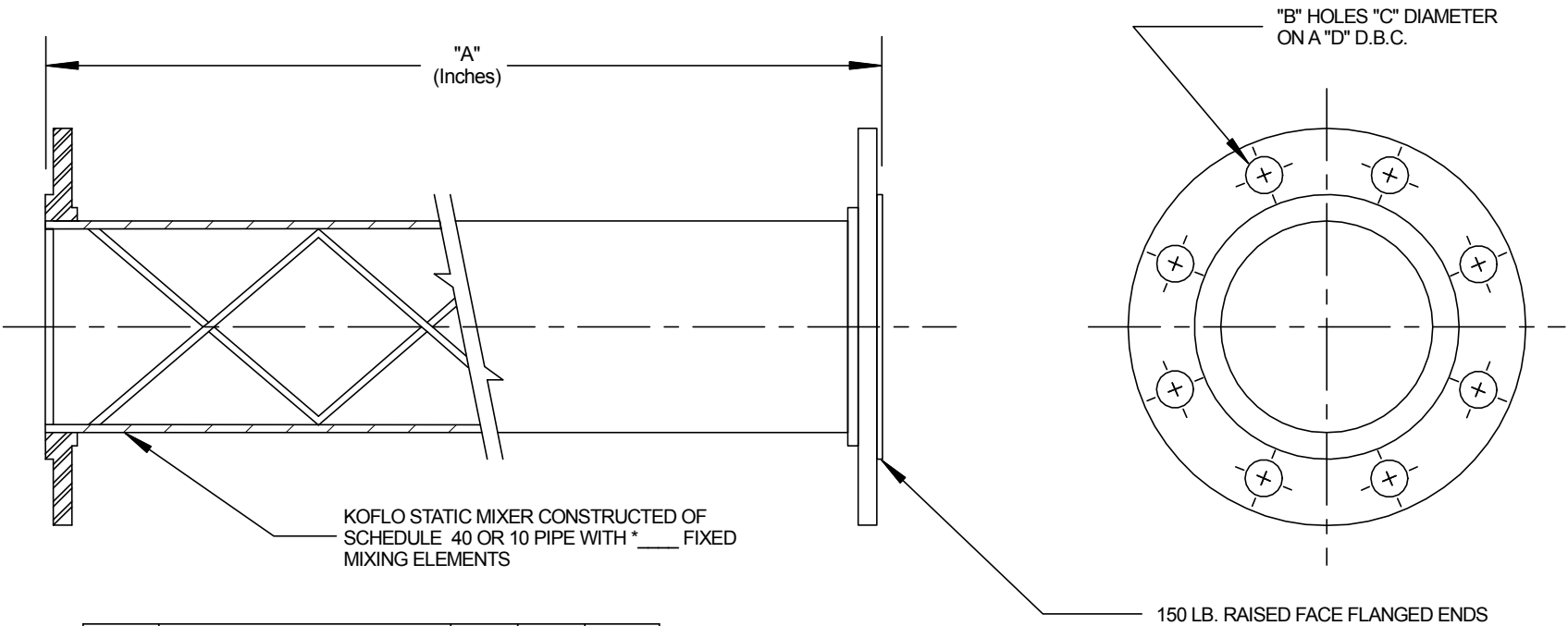


KOFLO Series 275 SS Flanged Static Mixer

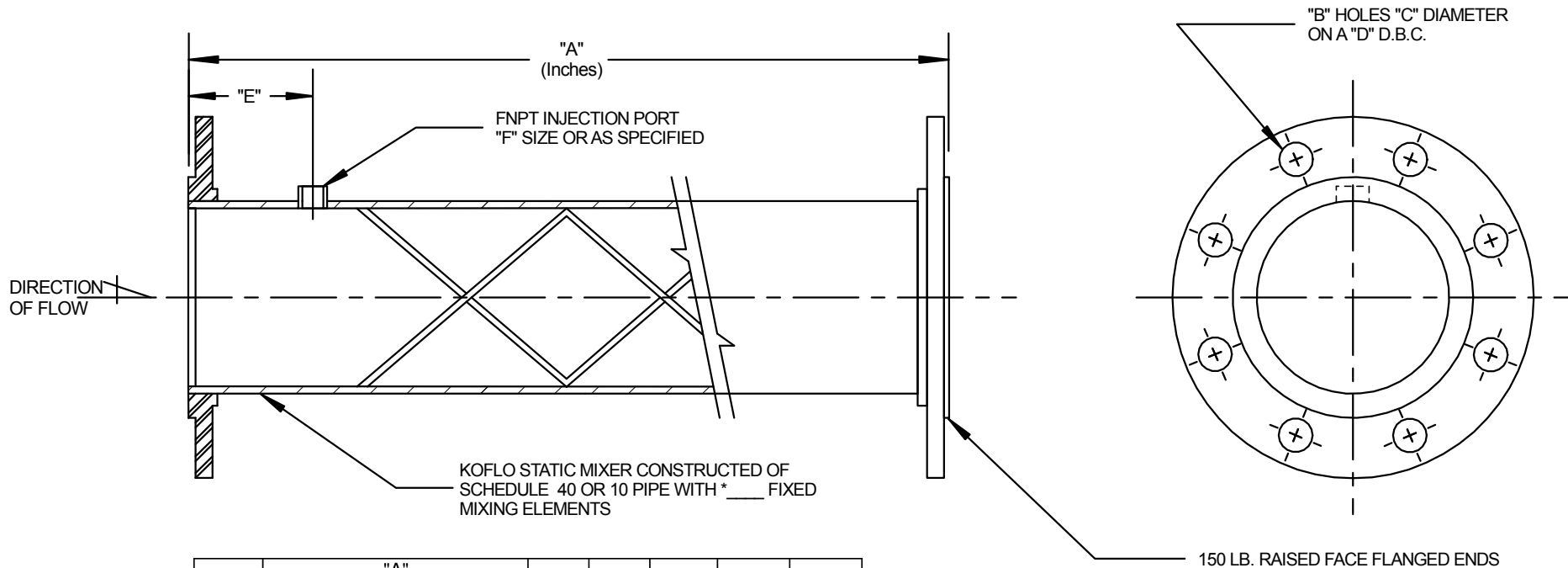


SIZE	"A"					"B"	"C"	"D"
	*NUMBER OF ELEMENTS							
	2	3	4	5	6			
1/2"	5	5	5	5	5	4	5/8"	2-3/8"
3/4"	6	6	6	7	7	4	5/8"	2-3/4"
1"	6	6	8	9	9	4	5/8"	3-1/8"
1-1/2"	7	7	9	11	13	4	5/8"	3-7/8"
2"	9	11	13	15	17	4	3/4"	4-3/4"
2-1/2"	10	13	15	18	20	4	3/4"	5-1/2"
3"	11	14	18	23	27	4	3/4"	6"
4"	14	19	24	29	36	8	3/4"	7-1/2"
6"	19	27	35	44	52	8	7/8"	9-1/2"
8"	24	35	46	57	68	8	7/8"	11-3/4"
10"	29	43	57	70	84	12	1"	14-1/4"
12"	36	52	68	84	102	12	1"	17"

NOTE: SCH 40 IS USED FOR CARBON STEEL MIXERS
SCH 10 IS USED FOR SS/ALLOY MIXERS 3" AND LARGER


Koflo		Koflo Corporation 309 CARY POINT DR. CARY, IL 60013	
SCALE: NONE	APPROVED BY	DRAWN BY NJF	
DATE: 9/11/85	<i>JLF</i>	REVISED 12/10/93	
CUSTOMER:		REVISED 5/22/08	
MODEL NO:		DRAWING NUMBER:	
TYPICAL FLANGE MOUNTED MIXER		KD-1018	

KOFLO Series 275 SS Flanged Static Mixer with Side Injection Port

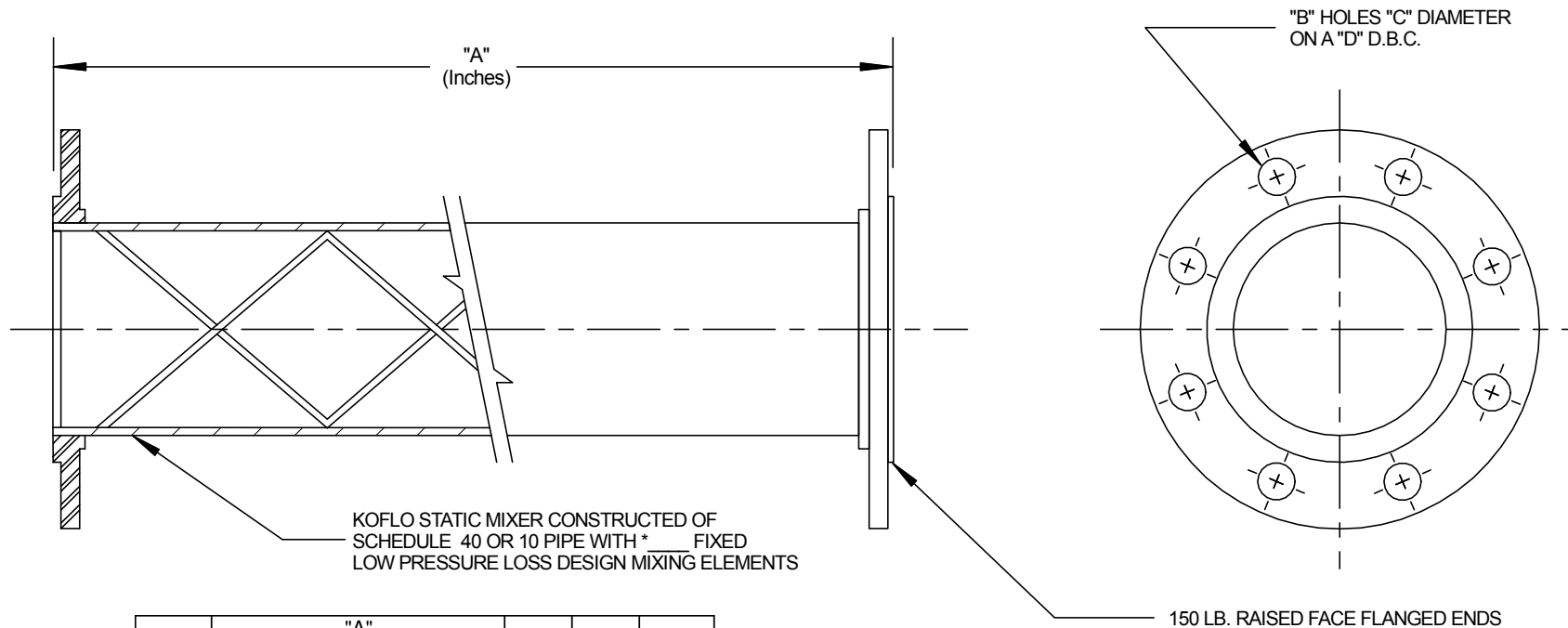


SIZE	"A"					"B"	"C"	"D"	"E"	"F"
	*NUMBER OF ELEMENTS									
	2	3	4	5	6					
1/2"	7	7	7	7	7	4	5/8"	2-3/8"	1-1/2"	1/4"
3/4"	8	8	8	9	9	4	5/8"	2-3/4"	1-1/2"	1/4"
1"	8	8	10	11	11	4	5/8"	3-1/8"	2"	1/4"
1-1/2"	10	10	12	14	16	4	5/8"	3-7/8"	2-3/4"	1/2"
2"	12	14	16	18	20	4	3/4"	4-3/4"	2-3/4"	1/2"
2-1/2"	13	16	18	21	23	4	3/4"	5-1/2"	3"	1/2"
3"	15	18	22	27	31	4	3/4"	6"	4"	3/4"
4"	18	23	28	33	40	8	3/4"	7-1/2"	4"	3/4"
6"	24	32	40	48	56	8	7/8"	9-1/2"	4"	3/4"
8"	29	40	51	62	74	8	7/8"	11-3/4"	5"	1"
10"	34	48	62	75	90	12	1"	14-1/4"	5"	1"
12"	42	58	74	90	108	12	1"	17"	6"	1"

NOTE: SCH 40 IS USED FOR CARBON STEEL MIXERS
SCH 10 IS USED FOR SS/ALLOY MIXERS 3" AND LARGER

		Koflo Corporation 309 CARY POINT DR. CARY, IL 60013	
		SCALE: NONE	APPROVED BY: <i>JLF</i>
DATE: 9/11/85		REVISED: 3/22/00	
CUSTOMER:		REVISED: 5/29/08	
MODEL NO: TYPICAL FLANGE MOUNTED MIXER WITH FNPT INJECTION PORT		DRAWING NUMBER: KD-1017	

KOFLO Series 275 SS Flanged Static Mixer - Low Pressure Loss Design

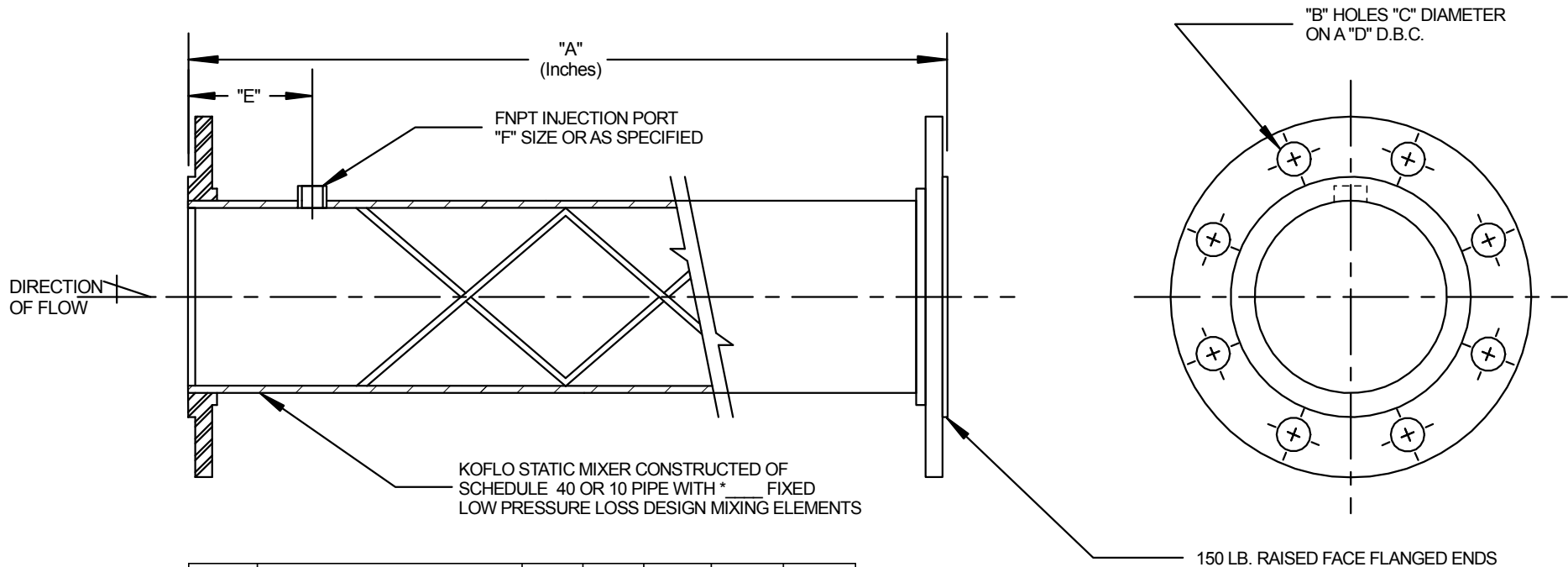


SIZE	"A"					"B"	"C"	"D"
	*NUMBER OF ELEMENTS							
	2	3	4	5	6			
1/2"	5	5	5	6.5	8	4	5/8"	2-3/8"
3/4"	4	6	7	9	11	4	5/8"	2-3/4"
1"	5	7	9	11	13	4	5/8"	3-1/8"
1-1/2"	8	12	15	18	21	4	5/8"	3-7/8"
2"	10	14	18	23	27	4	3/4"	4-3/4"
2-1/2"	12	17	23	28	34	4	3/4"	5-1/2"
3"	15	22	29	36	43	4	3/4"	6"
4"	19	29	38	48	57	8	3/4"	7-1/2"
6"	29	43	57	70	84	8	7/8"	9-1/2"
8"	38	56	74	~~	~~	8	7/8"	11-3/4"
10"	46	69	92	~~	~~	12	1"	14-1/4"
12"	55	82	~~	~~	~~	12	1"	17"

NOTE: SCH 40 IS USED FOR CARBON STEEL MIXERS
SCH 10 IS USED FOR SS/ALLOY MIXERS 3" AND LARGER



Koflo		Koflo Corporation 309 CARY POINT DR. CARY, IL 60013	
SCALE: NONE	APPROVED BY	DRAWN BY NJF	
DATE: 7/10/07	<i>JLF</i>	REVISED 5/30/08	
CUSTOMER:		REVISED	
MODEL NO: TYPICAL LOW PRESSURE LOSS DESIGN FLANGE MOUNTED MIXER		REVISED	
		DRAWING NUMBER: KD-986	

KOFLO Series 275 SS Flanged Static Mixer - Low Pressure Loss Design with Side Port Injection



SIZE	"A"					"B"	"C"	"D"	"E"	"F"
	*NUMBER OF ELEMENTS									
	2	3	4	5	6					
1/2"	5	6	7	8	10	4	5/8"	2-3/8"	1-1/2"	1/4"
3/4"	6	8	9	11	13	4	5/8"	2-3/4"	1-1/2"	1/4"
1"	7	9	11	13	15	4	5/8"	3-1/8"	2"	1/4"
1-1/2"	11	15	18	21	24	4	5/8"	3-7/8"	2-3/4"	1/2"
2"	13	17	21	26	30	4	3/4"	4-3/4"	2-3/4"	1/2"
2-1/2"	15	20	26	31	37	4	3/4"	5-1/2"	3"	1/2"
3"	19	26	33	40	47	4	3/4"	6"	4"	3/4"
4"	23	33	42	52	61	8	3/4"	7-1/2"	4"	3/4"
6"	33	48	61	74	88	8	7/8"	9-1/2"	4"	3/4"
8"	43	61	79	~~	~~	8	7/8"	11-3/4"	5"	1"
10"	51	74	97	~~	~~	12	1"	14-1/4"	5"	1"
12"	60	88	~~	~~	~~	12	1"	17"	6"	1"

NOTE: SCH 40 IS USED FOR CARBON STEEL MIXERS
SCH 10 IS USED FOR SS/ALLOY MIXERS 3" AND LARGER

		Koflo Corporation 309 CARY POINT DR. CARY, IL 60013	
SCALE: NONE	APPROVED BY 	DRAWN BY NJF	
DATE: 7/10/06		REVISED 5/30/08	
CUSTOMER:		REVISED	
		REVISED	
MODEL NO: TYPICAL LOW PRESSURE LOSS DESIGN FLANGE MOUNTED MIXER WITH FNPT INJECTION PORT		DRAWING NUMBER: KD-985	