

# Installation Instructions for Cooling Tower Conductivity Bleed & Inhibitor Dosing with:

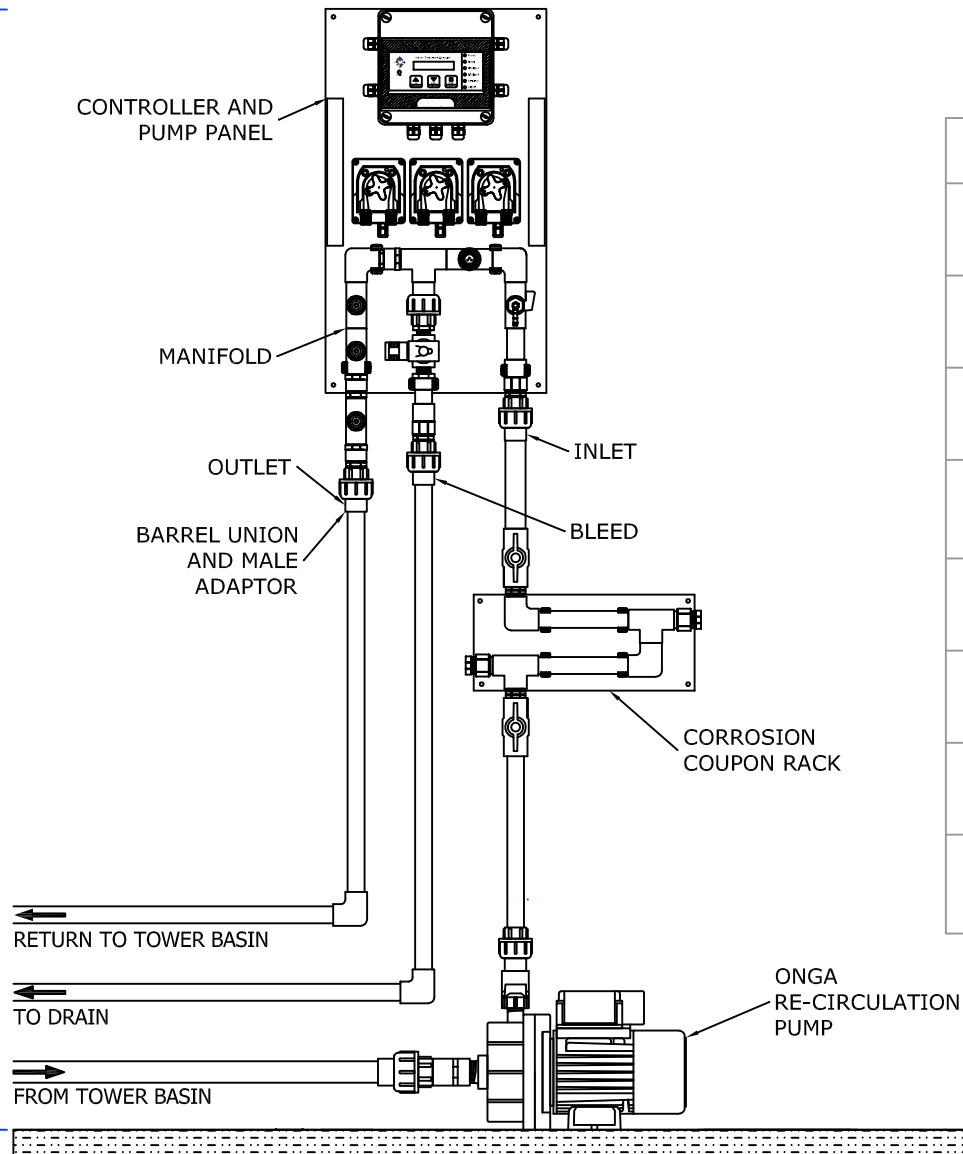
- Timed Biocide Dosing



Part Number	Installation Drawing No		Systems with XP2 Series Controllers				Systems with DIGICHEM Plus+ Controller		
			No ORP or pH	pH Control	ORP Control		ORP Control with pH monitoring		
	With Onga Recirc pump	Take-off from Condenser Pump	Timed Biocides Only	Timed Biocides w/pH control (No ORP control)	Chlorine Dosing	Brominator Dosing	Chlorine & Acid (pH) Dosing	Chlorine & Bromine Dosing	Brominator Dosing
DIGICHEM-A2-V	A1 & A2	B1 & B2	•						
DIGICHEM-A2-V-CABG	A1 & A2	B1 & B2	•						
DIGICHEM-AB2-V	A1 & A2	B1 & B2	•						
DIGICHEM-AB2-V-CABG	A1 & A2	B1 & B2	•						
DIGI-A2PH2A-P	C1 & C2	D1 & D2		•					
DIGI-A2PH2A-P-CABG	C1 & C2	D1 & D2		•					
DIGI-AB2PH2A-P	C1 & C2	D1 & D2		•					
DIGI-AB2PH2A-P-CABG	C1 & C2	D1 & D2		•					
DIGI-A2RX2A-B	G1 & G2	H1 & H2				•			
DIGI-A2RX2A-B-CABG	G1 & G2	H1 & H2				•			
DIGI-AB2RX2A-B	G1 & G2	H1 & H2				•			
DIGI-AB2RX2A-B-CABG	G1 & G2	H1 & H2				•			
DIGI-A2RX2A-P	C1 & C2	D1 & D2			•				
DIGI-A2RX2A-P-CABG	C1 & C2	D1 & D2			•				
DIGI-AB2RX2A-P	C1 & C2	D1 & D2			•				
DIGI-AB2RX2A-P-CABG	C1 & C2	D1 & D2			•				
DP-CAPHP-RXP	C1 & C2	D1 & D2					•		
DP-CAPHP-RXP-CAB	C1 & C2	D1 & D2					•		
DP-CAPH-RXPP	E1 & E2	F1 & F2						•	
DP-CAPH-RXPP-CAB	E1 & E2	F1 & F2						•	
DP-CAPH-RXB	G1 & G2	H1 & H2							•
DP-CAPH-RXB-CAB	G1 & G2	H1 & H2							•

# A1

1750mm Recommended mounting height from ground



## NOTES

- Isolation valve on Inlet of manifold or coupon rack must NEVER be shut when Onga re-circulation pump is running
- It is recommended that the Controller display is mounted at eye level
- Installation shown with plumbing in 20mm PVC pipe. Alternatively 12mm ID hose can be used
- Plumbing between tower basin and Onga pump suction must not be smaller than 25mm PVC (In-line filter, if fitted must be 1" or larger and requires regular cleaning to prevent blockage)
- For easy maintenance it is recommended to fit Barrel Unions on all inlet / outlet ports when plumbing with PVC pipe
- Dosing system also available with controller and pumps in weatherproof cabinet with hinged door
- Use sufficient thread sealing tape on all threaded connections to prevent leaks
- System depicted in drawing is DIGICHEM-AB2-V. Extra injection point supplied loose must be screwed to manifold outlet prior to mounting on wall



**Convergent  
Water  
Controls**

THIS DRAWING IS COPYRIGHT AND THE PROPERTY OF CONVERGENT WATER CONTROLS PTY LTD ABN 58 082 819 734. IT IS SUBJECT TO THEIR RECALL AND MAY NOT BE REPRODUCED OR ITS CONTENTS DIVULGED WITHOUT WRITTEN AUTHORITY.

Ver	Date	Notes	By	Check
1.0	02/06/08	ORIGINAL	LF	LN

Filename  
\\FILENAME

Drawn By  
LF

Date  
02/06/08

Checked By  
LN

Date  
02/06/08

Scale  
N/A

DIMENSIONS ARE IN MM  
DO NOT SCALE

Title  
INSTALLATION DIAGRAM FOR DIGICHEM-A2-V, DIGICHEM-A2-V-CABG, DIGICHEM-AB2-V, DIGICHEM-AB2-V-CABG WITH OPTIONAL ONGA RE-CIRCULATION PUMP AND COUPON RACK

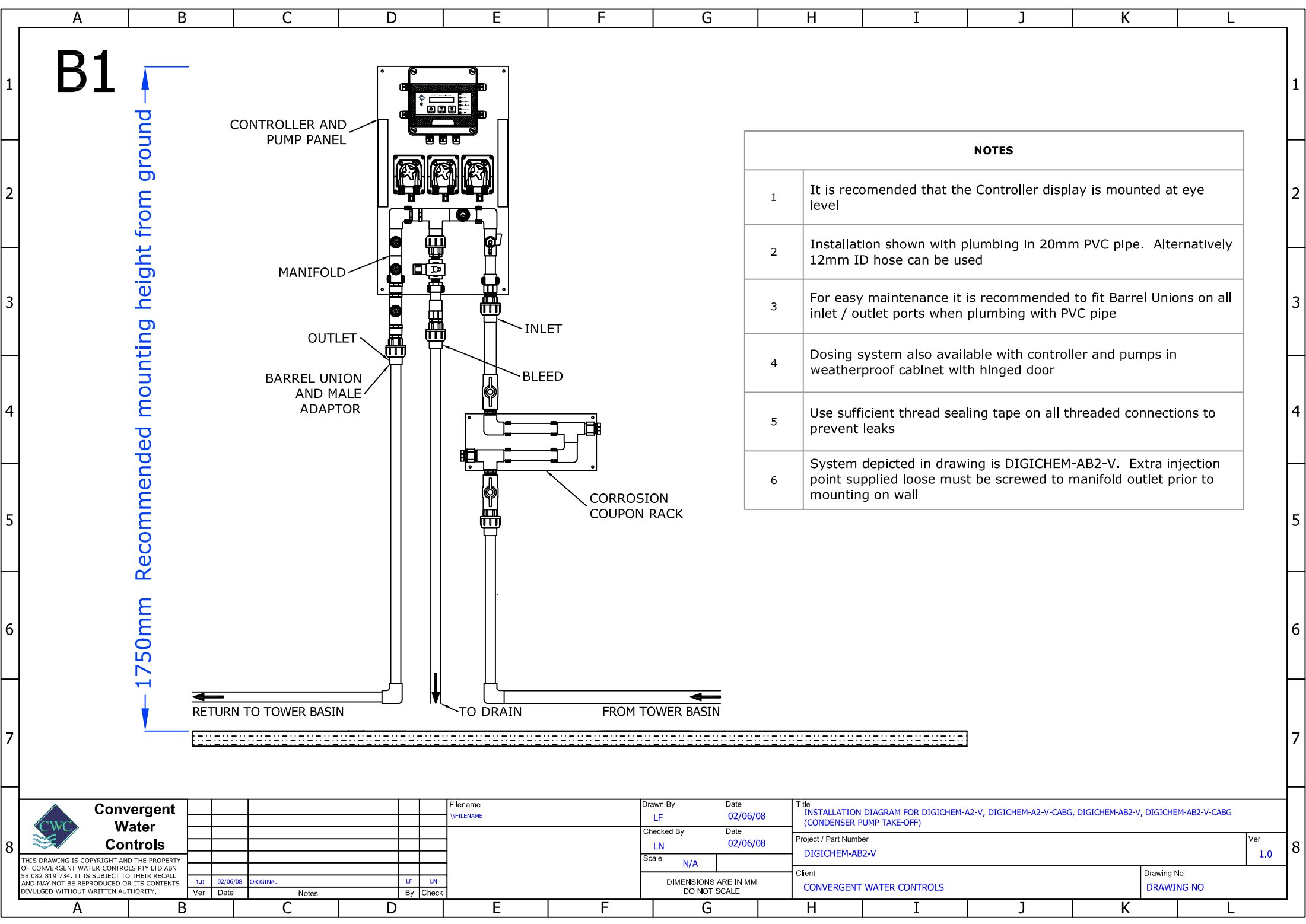
Project / Part Number  
DIGICHEM-AB2-V

Ver  
1.0


Client  
CONVERGENT WATER CONTROLS

Drawing No  
DRAWING NO

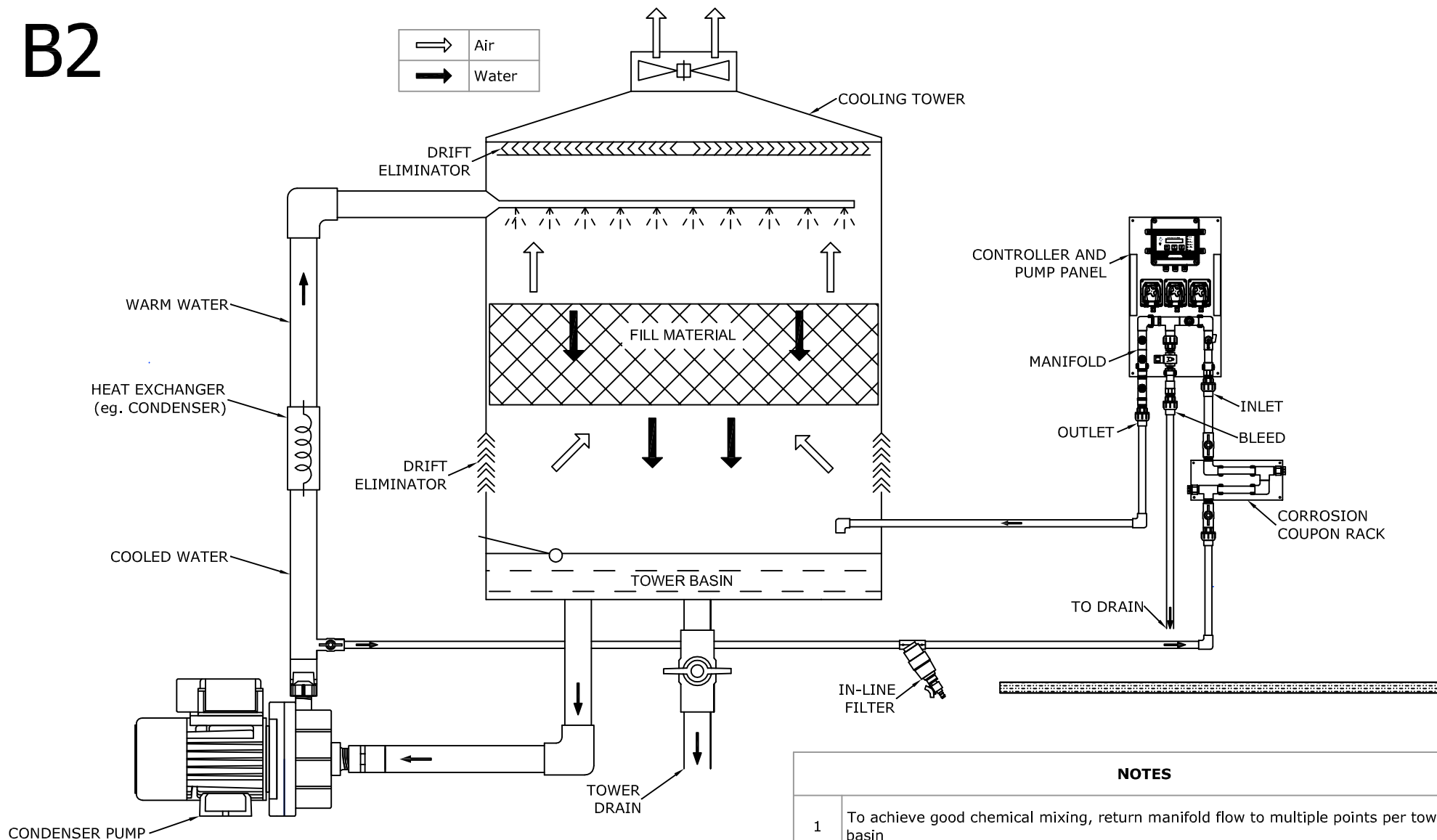
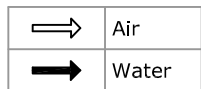




NOTES	
1	It is recommended that the Controller display is mounted at eye level
2	Installation shown with plumbing in 20mm PVC pipe. Alternatively 12mm ID hose can be used
3	For easy maintenance it is recommended to fit Barrel Unions on all inlet / outlet ports when plumbing with PVC pipe
4	Dosing system also available with controller and pumps in weatherproof cabinet with hinged door
5	Use sufficient thread sealing tape on all threaded connections to prevent leaks
6	System depicted in drawing is DIGICHEM-AB2-V. Extra injection point supplied loose must be screwed to manifold outlet prior to mounting on wall

 <b>Convergent Water Controls</b> <small>THIS DRAWING IS COPYRIGHT AND THE PROPERTY OF CONVERGENT WATER CONTROLS PTY LTD ABN 58 082 819 734. IT IS SUBJECT TO THEIR RECALL AND MAY NOT BE REPRODUCED OR ITS CONTENTS DIVULGED WITHOUT WRITTEN AUTHORITY.</small>					Filename \\FILENAME	Drawn By LF	Date 02/06/08	Title INSTALLATION DIAGRAM FOR DIGICHEM-A2-V, DIGICHEM-A2-V-CABG, DIGICHEM-AB2-V, DIGICHEM-AB2-V-CABG (CONDENSER PUMP TAKE-OFF)	
						Checked By LN	Date 02/06/08	Project / Part Number DIGICHEM-AB2-V	
						Scale N/A		Client CONVERGENT WATER CONTROLS	
						DIMENSIONS ARE IN MM DO NOT SCALE		Drawing No DRAWING NO	
	Ver 1.0	Date 02/06/08	Notes ORIGINAL	By LF	Check LN			Ver 1.0	

# B2



## NOTES

- To achieve good chemical mixing, return manifold flow to multiple points per tower basin
- Refer to detailed installation diagram for full installation instructions for DIGICHEM-A(B)2-V and DIGICHEM-A(B)2-V-CABG with Condenser Pump Take-off



**Convergent  
Water  
Controls**

THIS DRAWING IS COPYRIGHT AND THE PROPERTY OF CONVERGENT WATER CONTROLS PTY LTD ABN 58 082 819 734. IT IS SUBJECT TO THEIR RECALL AND MAY NOT BE REPRODUCED OR ITS CONTENTS DIVULGED WITHOUT WRITTEN AUTHORITY.

Ver	Date	Notes	By	Check
1.0	02/06/08	ORIGINAL	LF	LN

Filename  
\\FILENAME

Drawn By  
LF

Date  
02/06/08

Checked By  
LN

Date  
02/06/08

Scale  
N/A

DIMENSIONS ARE IN MM  
DO NOT SCALE

Title  
GENERIC DIAGRAM OF CONDUCTIVITY AND BIOCIDES DOSING SYSTEM PLUMBED TO COOLING TOWER FROM CONDENSER PUMP DISCHARGE

Project / Part Number  
DIGICHEM-AB2-V

Client  
CONVERGENT WATER CONTROLS

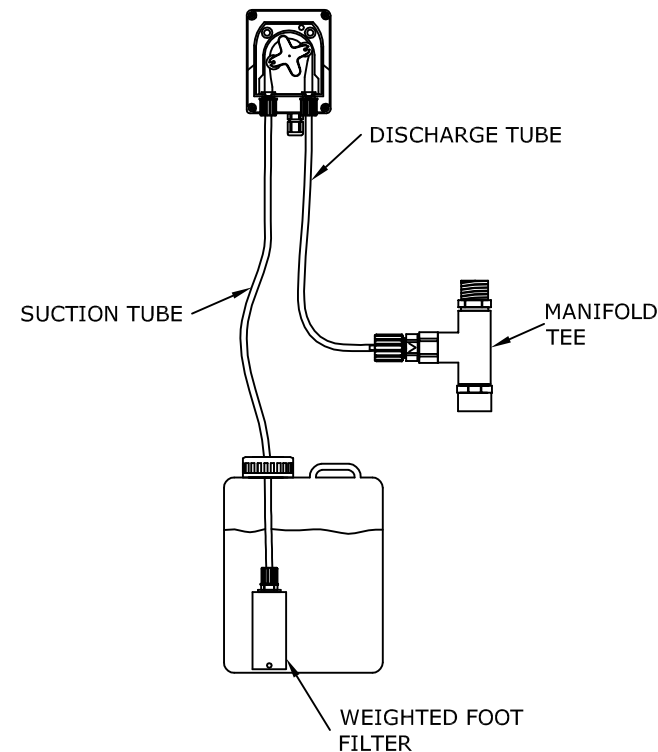
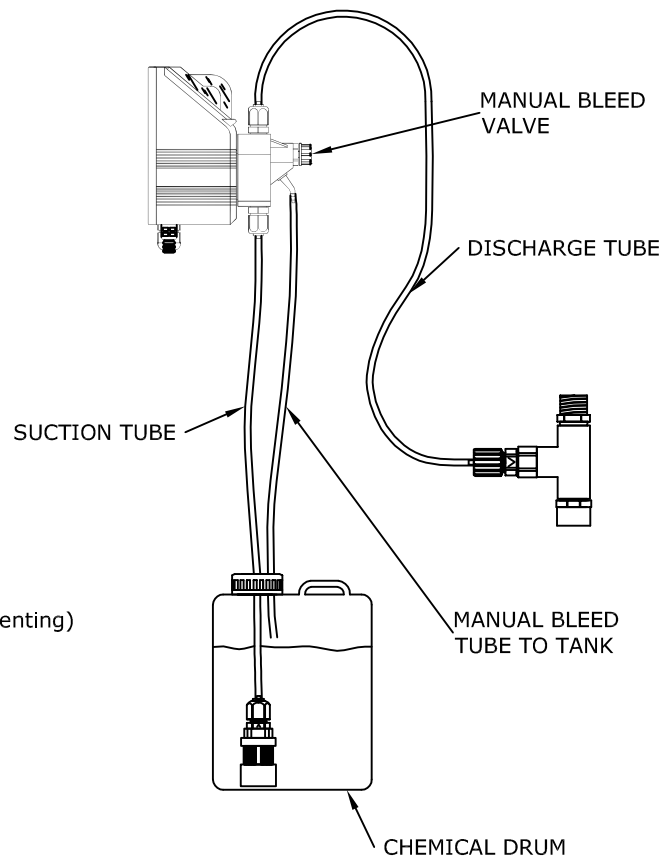
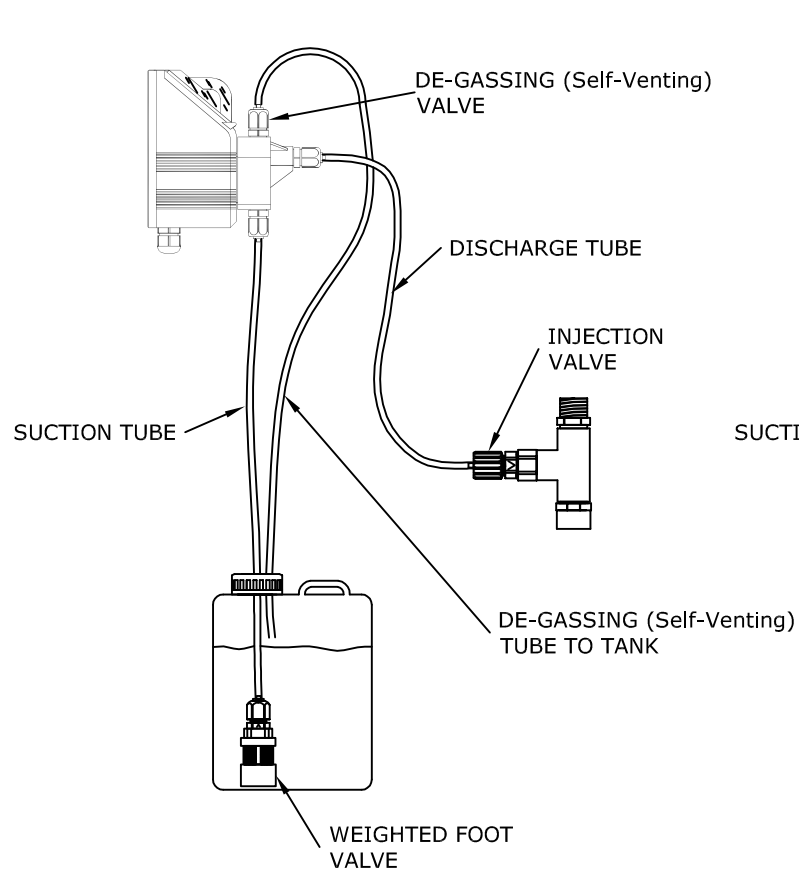
Drawing No  
DRAWING NO

Ver  
1.0

# EMEC F SERIES PUMP WITH DE-GASSING (Self-Venting) HEAD

# EMEC F SERIES PUMP

# SEKO PERISTALTIC PUMP



## Notes

- All tubing supplied with pumps has 4mm inside diameter, 6mm outside diameter. Suction tubing is clear PVC, Discharge tubing is black PE
- It is recommended that pumps are mounted less than 2m from base of chemical drum



**Convergent  
Water  
Controls**

THIS DRAWING IS COPYRIGHT AND THE PROPERTY OF CONVERGENT WATER CONTROLS PTY LTD ABN 58 082 819 734. IT IS SUBJECT TO THEIR RECALL AND MAY NOT BE REPRODUCED OR ITS CONTENTS DIVULGED WITHOUT WRITTEN AUTHORITY.

1.0	03/06/08	ORIGINAL	LF	LN	
Ver	Date	Notes	By	Check	

Filename  
\\FILENAME

Drawn By  
LF

Date  
03/06/08

Checked By  
LN

Date  
03/06/08

Scale  
N/A

DIMENSIONS ARE IN MM  
DO NOT SCALE

Title  
Pump Installation Diagram

Project / Part Number  
SEKO / EMEC PUMP

Client  
CONVERGENT WATER CONTROLS

Drawing No  
DRAWING NO

Ver  
1.0