
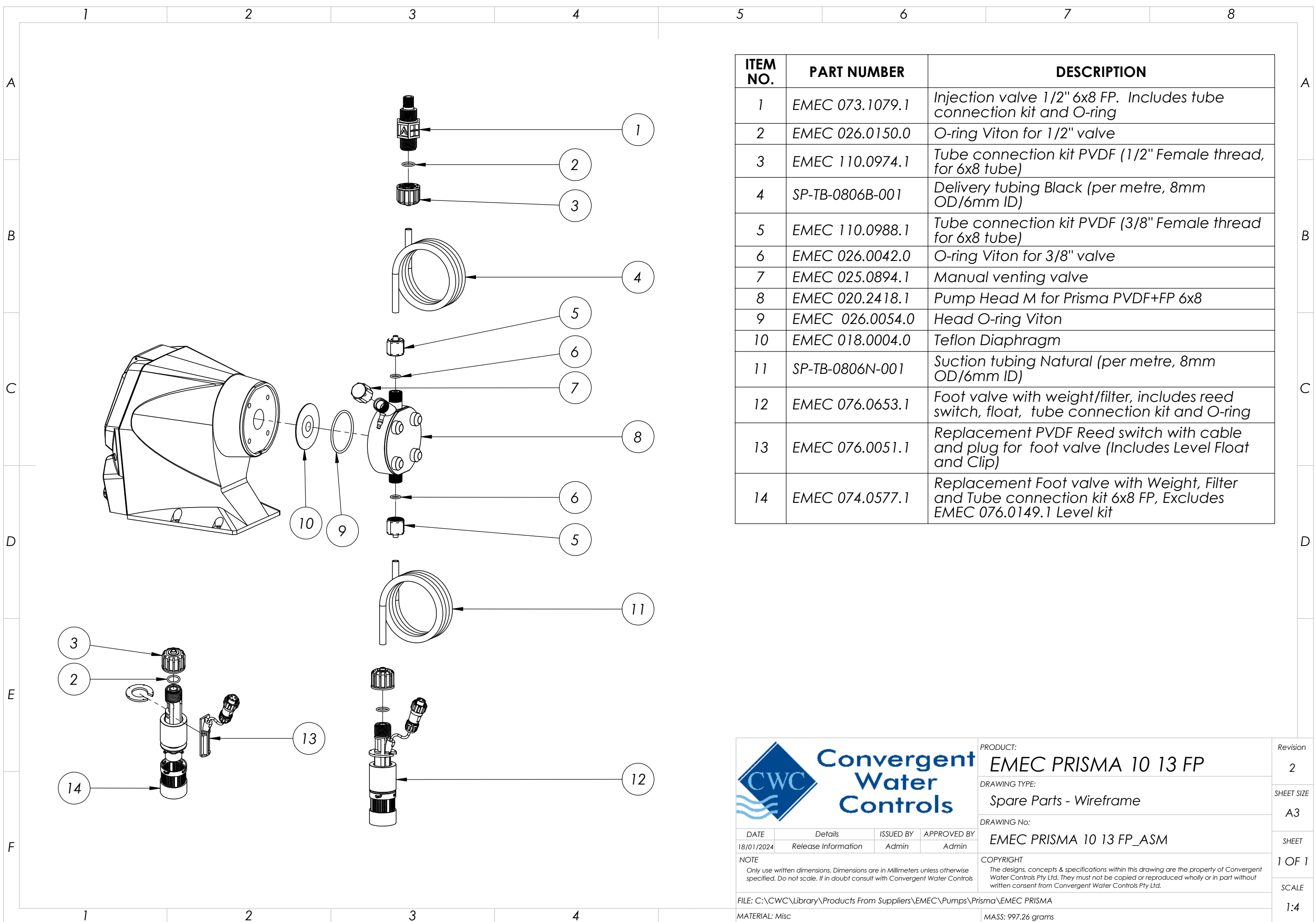



| ITEM NO. | PART NUMBER | DESCRIPTION |
|----------|-----------------|---|
| 1 | EMEC 073.1079.1 | Injection valve 1/2" 6x8 FP. Includes tube connection kit and O-ring |
| 2 | EMEC 026.0150.0 | O-ring Viton for 1/2" valve |
| 3 | EMEC 110.0974.1 | Tube connection kit PVDF (1/2" Female thread, for 6x8 tube) |
| 4 | SP-TB-0806B-001 | Delivery tubing Black (per metre, 8mm OD/6mm ID) |
| 5 | EMEC 110.0988.1 | Tube connection kit PVDF (3/8" Female thread for 6x8 tube) |
| 6 | EMEC 026.0042.0 | O-ring Viton for 3/8" valve |
| 7 | EMEC 025.0894.1 | Manual venting valve |
| 8 | EMEC 020.2418.1 | Pump Head M for Prisma PVDF+FP 6x8 |
| 9 | EMEC 026.0054.0 | Head O-ring Viton |
| 10 | EMEC 018.0004.0 | Teflon Diaphragm |
| 11 | SP-TB-0806N-001 | Suction tubing Natural (per metre, 8mm OD/6mm ID) |
| 12 | EMEC 076.0653.1 | Foot valve with weight/filter, includes reed switch, float, tube connection kit and O-ring |
| 13 | EMEC 076.0051.1 | Replacement PVDF Reed switch with cable and plug for foot valve (Includes Level Float and Clip) |
| 14 | EMEC 074.0577.1 | Replacement Foot valve with Weight, Filter and Tube connection kit 6x8 FP, Excludes EMEC 076.0149.1 Level kit |

|  | | PRODUCT: | EMEC PRISMA 10 13 FP | Revision | 2 | | | | | | | | |
|---|---------------------|--|----------------------|------------|-------------|------------|---------------------|-------|-------|-------------|--------------------------|-------|--------|
| | | DRAWING TYPE: | Spare Parts | SHEET SIZE | A3 | | | | | | | | |
| <table border="1"> <tr> <th>DATE</th> <th>Details</th> <th>ISSUED BY</th> <th>APPROVED BY</th> </tr> <tr> <td>18/01/2024</td> <td>Release Information</td> <td>Admin</td> <td>Admin</td> </tr> </table> | | DATE | Details | ISSUED BY | APPROVED BY | 18/01/2024 | Release Information | Admin | Admin | DRAWING No: | EMEC PRISMA 10 13 FP_ASM | SHEET | 1 OF 1 |
| DATE | Details | ISSUED BY | APPROVED BY | | | | | | | | | | |
| 18/01/2024 | Release Information | Admin | Admin | | | | | | | | | | |
| NOTE | | COPYRIGHT | | SCALE | | | | | | | | | |
| <p>Only use written dimensions. Dimensions are in Millimeters unless otherwise specified. Do not scale. If in doubt consult with Convergent Water Controls</p> | | <p>The designs, concepts & specifications within this drawing are the property of Convergent Water Controls Pty Ltd. They must not be copied or reproduced wholly or in part without written consent from Convergent Water Controls Pty Ltd.</p> | | 1:4 | | | | | | | | | |
| FILE: C:\CWC\Library\Products From Suppliers\EMEC\Pumps\Prisma\EMEC PRISMA | | MASS: 997.26 grams | | | | | | | | | | | |
| MATERIAL: Misc | | | | | | | | | | | | | |



| ITEM NO. | PART NUMBER | DESCRIPTION |
|----------|-----------------|---|
| 1 | EMEC 073.1079.1 | Injection valve 1/2" 6x8 FP. Includes tube connection kit and O-ring |
| 2 | EMEC 026.0150.0 | O-ring Viton for 1/2" valve |
| 3 | EMEC 110.0974.1 | Tube connection kit PVDF (1/2" Female thread, for 6x8 tube) |
| 4 | SP-TB-0806B-001 | Delivery tubing Black (per metre, 8mm OD/6mm ID) |
| 5 | EMEC 110.0988.1 | Tube connection kit PVDF (3/8" Female thread for 6x8 tube) |
| 6 | EMEC 026.0042.0 | O-ring Viton for 3/8" valve |
| 7 | EMEC 025.0894.1 | Manual venting valve |
| 8 | EMEC 020.2418.1 | Pump Head M for Prisma PVDF+FP 6x8 |
| 9 | EMEC 026.0054.0 | Head O-ring Viton |
| 10 | EMEC 018.0004.0 | Teflon Diaphragm |
| 11 | SP-TB-0806N-001 | Suction tubing Natural (per metre, 8mm OD/6mm ID) |
| 12 | EMEC 076.0653.1 | Foot valve with weight/filter, includes reed switch, float, tube connection kit and O-ring |
| 13 | EMEC 076.0051.1 | Replacement PVDF Reed switch with cable and plug for foot valve (Includes Level Float and Clip) |
| 14 | EMEC 074.0577.1 | Replacement Foot valve with Weight, Filter and Tube connection kit 6x8 FP, Excludes EMEC 076.0149.1 Level kit |

| | | |
|---|--|-------------------------------------|
|  | PRODUCT: EMEC PRISMA 10 13 FP | Revision 2 |
| | DRAWING TYPE: Spare Parts - Wireframe | SHEET SIZE A3 |
| DRAWING No.: EMEC PRISMA 10 13 FP_ASM | SHEET 1 OF 1 | |
| NOTE: Only use written dimensions. Dimensions are in Millimeters unless otherwise specified. Do not scale. If in doubt consult with Convergent Water Controls | COPYRIGHT: The designs, concepts & specifications within this drawing are the property of Convergent Water Controls Pty Ltd. They must not be copied or reproduced wholly or in part without written consent from Convergent Water Controls Pty Ltd. | SCALE 1:4 |
| FILE: C:\CWC\Library\Products From Suppliers\EMEC\Pumps\Prisma\EMEC PRISMA | DATE: 18/01/2024 | ISSUED BY: Admin |
| MATERIAL: Misc | APPROVED BY: Admin | DETAILS: Release Information |
| MASS: 997.26 grams | | |