


ITEM NO.	PART NUMBER	DESCRIPTION
1	EMEC 073.4869.1	Injection valve 1/2", 13mm hose barb for 13x16 hose PP+EP+SS. Includes hose connection kit, O-ring and hose clamp
2	EMEC 026.0143.0	O-ring EPDM for 1/2" valve
3	EMEC 110.1072.1	Hose Connection Kit (1/2" BSPF Black PP nut with Black PP hose barb for 12x18mm soft PVC suction hose or 13x16 PVDF delivery hose, incl SS hose clamp)
4	FHS P-SIL-012-001	Hose PVC Braided, 12.5mm ID, per metre
5	EMEC 025.2137.1	Manual venting valve PP + EP
6	EMEC 020.2495.1	Pump head NM for Prius 010 060 PP + EP + SS, 1/2 x13mm (Includes all valves, hose connection kits and head O-ring)
7	EMEC 026.0223.0	Head O-ring EPDM
8	EMEC 018.0005.0	Teflon Diaphragm
9	EMEC 074.0807.1	Foot valve 1/2" with weight/filter. Includes hose connection kit, O-ring and hose clamp

COMPATIBLE MODELS	REPLACEMENT MOTOR PART NUMBER (ITEM 10)
EMEC PD 010 060 PD19 SS	EMEC 068.0044.1
EMEC PD 010 060 PD11 SS	EMEC 068.0020.0
EMEC PDMF 010 060 PD12 SS	EMEC 068.0009.0



PRODUCT:
EMEC PD 010 060 PD19 SS

DRAWING TYPE:
Spare Parts

DRAWING No:
EMEC PD 010 060 PD19 SS_ASM

COPYRIGHT
The designs, concepts & specifications within this drawing are the property of Convergent Water Controls Pty Ltd. They must not be copied or reproduced wholly or in part without written consent from Convergent Water Controls Pty Ltd.

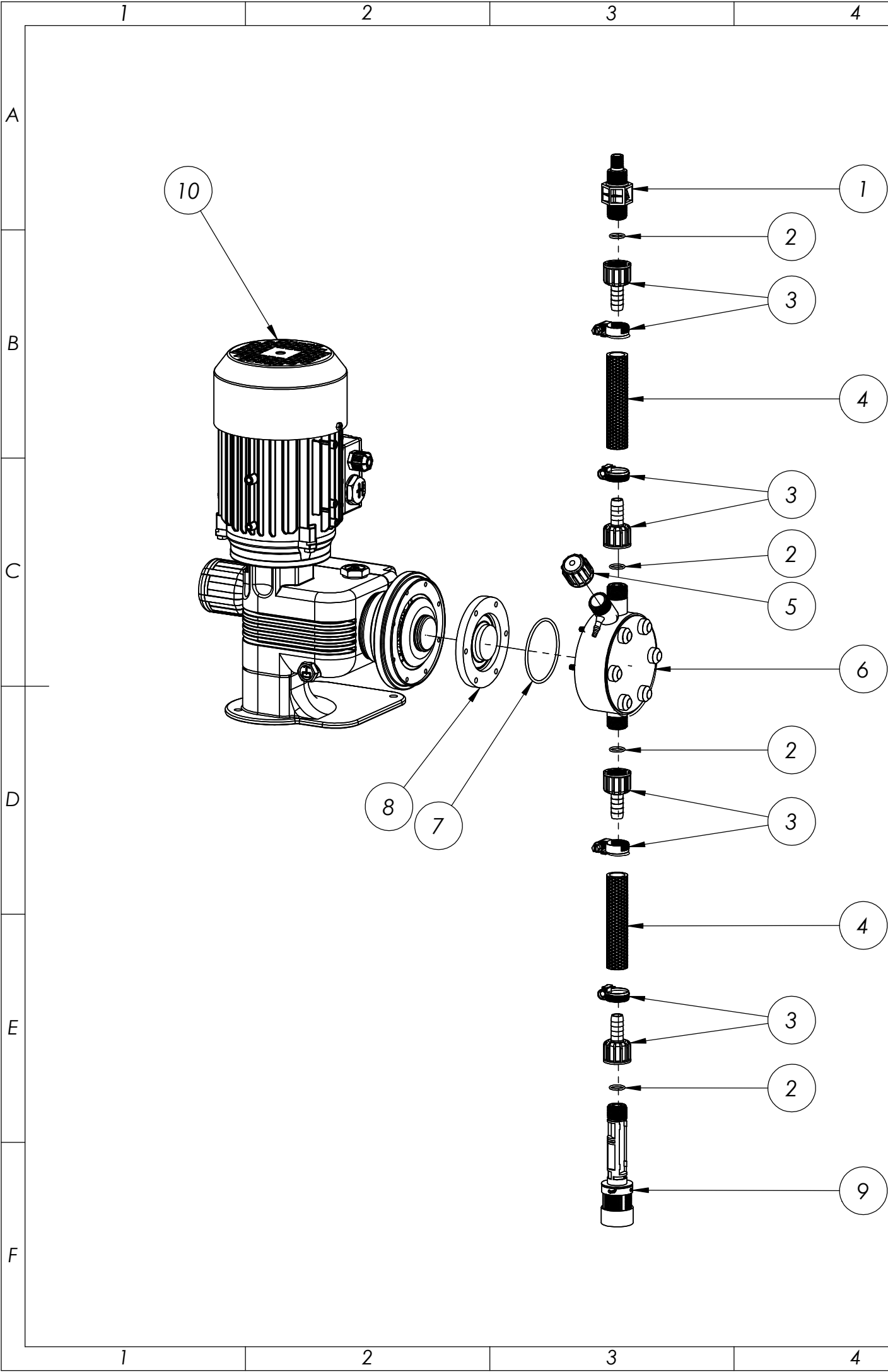
Revision
1

SHEET SIZE
A3

SHEET
1 OF 1


SCALE
1:5

DATE	Details	ISSUED BY	APPROVED BY
22/03/2024	Release Information		Admin
NOTE Only use written dimensions. Dimensions are in Millimeters unless otherwise specified. Do not scale. If in doubt consult with Convergent Water Controls			
FILE: C:\CWC\Library\Products From Suppliers\EMEC\Pumps\PD-Series\EMEC PD Series Pump			
MATERIAL: Misc		MASS: 20218.31 grams	



ITEM NO.	PART NUMBER	DESCRIPTION
1	EMEC 073.4869.1	Injection valve 1/2", 13mm hose barb for 13x16 hose PP+EP+SS. Includes hose connection kit, O-ring and hose clamp
2	EMEC 026.0143.0	O-ring EPDM for 1/2" valve
3	EMEC 110.1072.1	Hose Connection Kit (1/2" BSPF Black PP nut with Black PP hose barb for 12x18mm soft PVC suction hose or 13x16 PVDF delivery hose, incl SS hose clamp)
4	FHS P-SIL-012-001	Hose PVC Braided, 12.5mm ID, per metre
5	EMEC 025.2137.1	Manual venting valve PP + EP
6	EMEC 020.2495.1	Pump head NM for Prius 010 060 PP + EP + SS, 1/2 x13mm (Includes all valves, hose connection kits and head O-ring)
7	EMEC 026.0223.0	Head O-ring EPDM
8	EMEC 018.0005.0	Teflon Diaphragm
9	EMEC 074.0807.1	Foot valve 1/2" with weight/filter. Includes hose connection kit, O-ring and hose clamp

COMPATIBLE MODELS	REPLACEMENT MOTOR PART NUMBER (ITEM 10)
EMEC PD 010 060 PD19 SS	EMEC 068.0044.1
EMEC PD 010 060 PD11 SS	EMEC 068.0020.0
EMEC PDMF 010 060 PD12 SS	EMEC 068.0009.0



PRODUCT:
EMEC PD 010 060 PD19 SS

DRAWING TYPE:
Spare Parts - Wireframe

DRAWING No:
EMEC PD 010 060 PD19 SS_ASM

COPYRIGHT
The designs, concepts & specifications within this drawing are the property of Convergent Water Controls Pty Ltd. They must not be copied or reproduced wholly or in part without written consent from Convergent Water Controls Pty Ltd.

DATE
22/03/2024

Details
Release Information

ISSUED BY

APPROVED BY
Admin

NOTE
Only use written dimensions. Dimensions are in Millimeters unless otherwise specified. Do not scale. If in doubt consult with Convergent Water Controls

FILE: C:\CWC\Library\Products From Suppliers\EMEC\Pumps\PD-Series\EMEC PD Series Pump

MATERIAL: Misc

Revision
1

SHEET SIZE
A3

SHEET
1 OF 1

SCALE
1:5

MASS: 20218.31 grams