

ITEM NO.	PART NUMBER	DESCRIPTION
1	EMEC 073.1214.1	Injection valve 3/4", 13mm hose barb for 13x16 hose FP. Includes hose connection kit, O-ring and hose clamp
2	EMEC 026.0371.0	O-ring Viton for 3/4" valve
3	EMEC 110.1023.1	Hose Connection Kit (3/4" BSPF Black PVDF nut with Natural PVDF hose barb for 12x18 soft PVC suction hose or 13x16 PVDF delivery hose, incl SS hose clamp)
4	FHS P-SIL-012-001	Hose PVC Braided, 12.5mm ID, per metre
5	EMEC 025.1600.1	Manual venting valve PVDF + FP
6	EMEC 025.1596.1	Internal Delivery Valve kit PVDF + FP + CE
7	EMEC 020.1804.1	Pump Head TM for Prius PVDF+FP+CE 3/4"x13mm. Includes head O-ring, hose connection kits with O-ring and clamp
8	EMEC 025.1587.1	Internal Suction Valve kit PVDF + FP + CE
9	EMEC 026.0117.0	Head O-ring Viton
10	EMEC 018.0049.0	Teflon Diaphragm
11	EMEC 074.0655.1	Foot valve 1/2" with weight/filter. Includes hose connection kit, O-ring and hose clamp
12	EMEC 026.0150.0	O-ring Viton for 1/2" valve
13	EMEC 110.1025.1	Hose Connection Kit (1/2" BSPF Black PVDF nut with Natural PVDF hose barb for 12x18mm soft PVC suction hose or 13x16 PVDF delivery hose, incl SS hose clamp)

COMPATIBLE MODELS	REPLACEMENT MOTOR PART NUMBER (ITEM 14)
EMEC PD 007 160 KV19	EMEC 068.0044.1
EMEC PD 007 160 KV12	EMEC 068.0009.0
EMEC PDMF 007 160 KV12	EMEC 068.0009.0



DATE	Details	ISSUED BY	APPROVED BY
22/03/2024	Release Information		Admin

NOTE
Only use written dimensions. Dimensions are in Millimeters unless otherwise specified. If in doubt consult with Convergent Water Controls

FILE: C:\CWC\Library\Products From Suppliers\EMEC\Pumps\PD-Series\EMEC PD Series Pump

MATERIAL: Misc

PRODUCT:
EMEC PD 007 160 KV19

DRAWING TYPE:
Spare Parts

DRAWING No:
EMEC PD 007 160 KV19_ASM

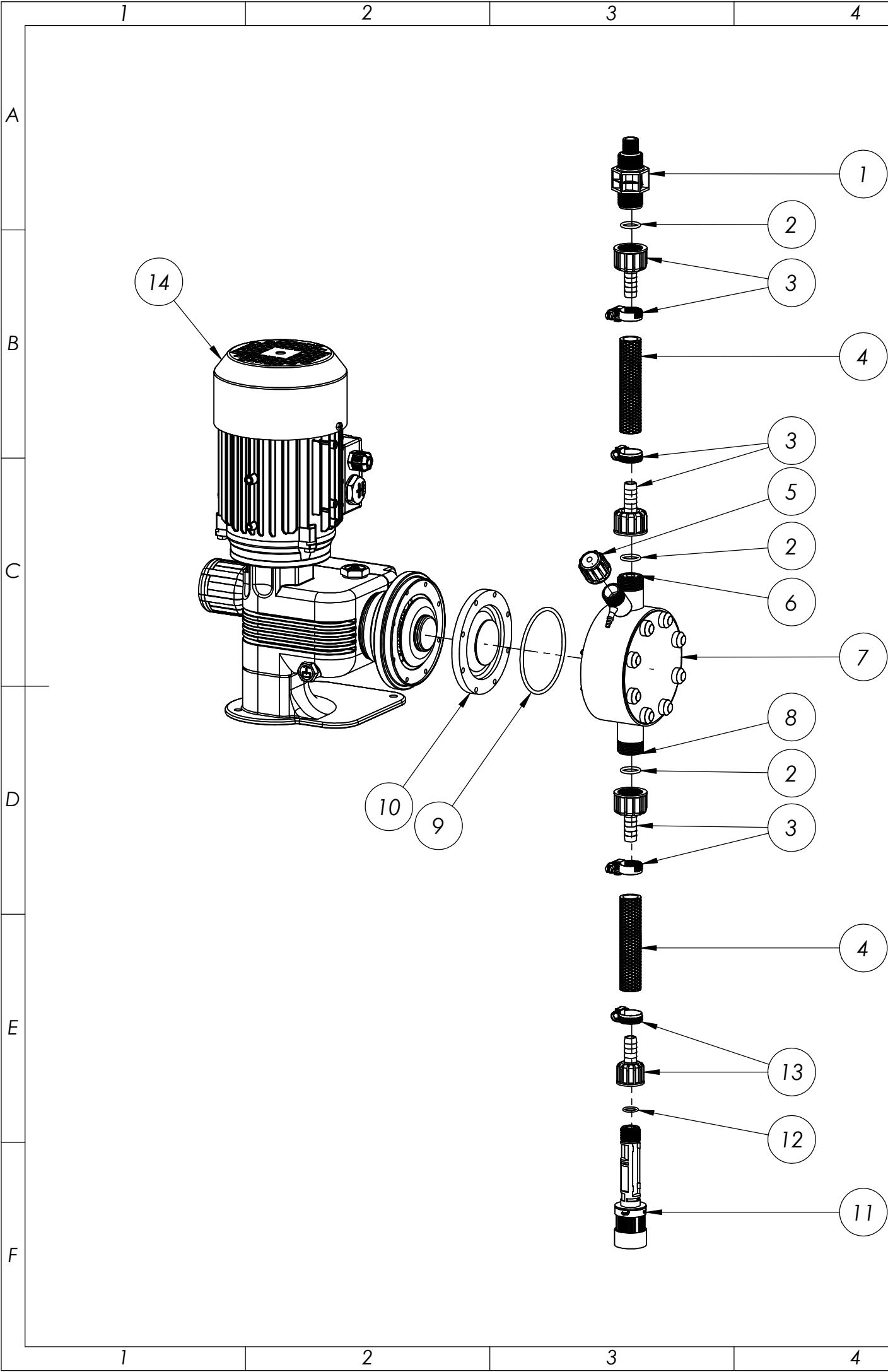
COPYRIGHT
The designs, concepts & specifications within this drawing are the property of Convergent Water Controls Pty Ltd. They must not be copied or reproduced wholly or in part without written consent from Convergent Water Controls Pty Ltd.

Revision
1

SHEET SIZE
A3


SHEET
1 OF 1

SCALE
1:5



ITEM NO.	PART NUMBER	DESCRIPTION
1	EMEC 073.1214.1	Injection valve 3/4", 13mm hose barb for 13x16 hose FP. Includes hose connection kit, O-ring and hose clamp
2	EMEC 026.0371.0	O-ring Viton for 3/4" valve
3	EMEC 110.1023.1	Hose Connection Kit (3/4" BSPF Black PVDF nut with Natural PVDF hose barb for 12x18 soft PVC suction hose or 13x16 PVDF delivery hose, incl SS hose clamp)
4	FHS P-SIL-012-001	Hose PVC Braided, 12.5mm ID, per metre
5	EMEC 025.1600.1	Manual venting valve PVDF + FP
6	EMEC 025.1596.1	Internal Delivery Valve kit PVDF + FP + CE
7	EMEC 020.1804.1	Pump Head TM for Prius PVDF+FP+CE 3/4"x13mm. Includes head O-ring, hose connection kits with O-ring and clamp
8	EMEC 025.1587.1	Internal Suction Valve kit PVDF + FP + CE
9	EMEC 026.0117.0	Head O-ring Viton
10	EMEC 018.0049.0	Teflon Diaphragm
11	EMEC 074.0655.1	Foot valve 1/2" with weight/filter. Includes hose connection kit, O-ring and hose clamp
12	EMEC 026.0150.0	O-ring Viton for 1/2" valve
13	EMEC 110.1025.1	Hose Connection Kit (1/2" BSPF Black PVDF nut with Natural PVDF hose barb for 12x18mm soft PVC suction hose or 13x16 PVDF delivery hose, incl SS hose clamp)

COMPATIBLE MODELS	REPLACEMENT MOTOR PART NUMBER (ITEM 14)
EMEC PD 007 160 KV19	EMEC 068.0044.1
EMEC PD 007 160 KV12	EMEC 068.0009.0
EMEC PDMF 007 160 KV12	EMEC 068.0009.0



PRODUCT:
EMEC PD 007 160 KV19

DRAWING TYPE:
Spare Parts - Wireframe

DRAWING No:
EMEC PD 007 160 KV19_ASM

COPYRIGHT
The designs, concepts & specifications within this drawing are the property of Convergent Water Controls Pty Ltd. They must not be copied or reproduced wholly or in part without written consent from Convergent Water Controls Pty Ltd.

DATE
22/03/2024

Details
Release Information

ISSUED BY

APPROVED BY
Admin

NOTE
Only use written dimensions. Dimensions are in Millimeters unless otherwise specified. If in doubt consult with Convergent Water Controls

FILE: C:\CWC\Library\Products From Suppliers\EMEC\Pumps\PD-Series\EMEC PD Series Pump

MATERIAL: Misc

Revision
1

SHEET SIZE
A3

SHEET
1 OF 1

SCALE
1:5

MASS: 20218.31 grams