

ITEM NO.	PART NUMBER	DESCRIPTION
1	EMEC 073.4735.1	Injection valve 1/2" 4x6 PP EP SS. Includes tube connection kit and O-ring
2	EMEC 026.0143.0	O-ring EPDM for 1/2" valve
3	EMEC 110.0990.1	Tube connection kit PP (1/2" Female thread, for 4x6 tube)
4	SP-SK-02B-BK	Delivery tubing Black (2 metre roll, 6mm OD/4mm ID)
5	EMEC 110.0982.1	Tube connection kit PP (3/8" Female thread for 4x6 tube)
6	EMEC 026.0045.0	O-ring EPDM for 3/8" valve
7	EMEC 025.0895.1	Manual venting valve
8	EMEC 020.2443.1	Pump Head L for Prisma PP+EP+SS 4x6
9	EMEC 026.0007.0	Head O-ring EPDM
10	EMEC 018.0033.0	Teflon Diaphragm
11	SP-SK-02A	Suction tubing Transparent (2 metre roll, 6mm OD/4mm ID)
12	EMEC 076.0732.1	Foot valve with weight/filter, includes reed switch, float, tube connection kit and O-ring
13	EMEC 076.0409.1	Replacement PP+EP Reed switch with cable and plug for foot valve (Includes Level Float and Clip)
14	EMEC 074.0671.1	Replacement Foot valve with Weight, Filter and Tube connection kit 4x6 EP SS, Excludes EMEC 076.0316.1 Level kit

COMPATIBLE MODELS	
EMEC PRISMA 16 7.5 PP EP SS	EMEC PRISMA 20 05 PP EP SS



DATE	Details	ISSUED BY	APPROVED BY
7/12/2022	Release Information	Admin	Admin

NOTE
Only use written dimensions. Dimensions are in Millimeters unless otherwise specified. Do not scale. If in doubt consult with Convergent Water Controls

FILE: C:\CWC\Library\Products From Suppliers\EMEC\Pumps\Prisma\EMEC PRISMA

MATERIAL: Misc

PRODUCT:
EMEC PRISMA 25 02 PP EP SS

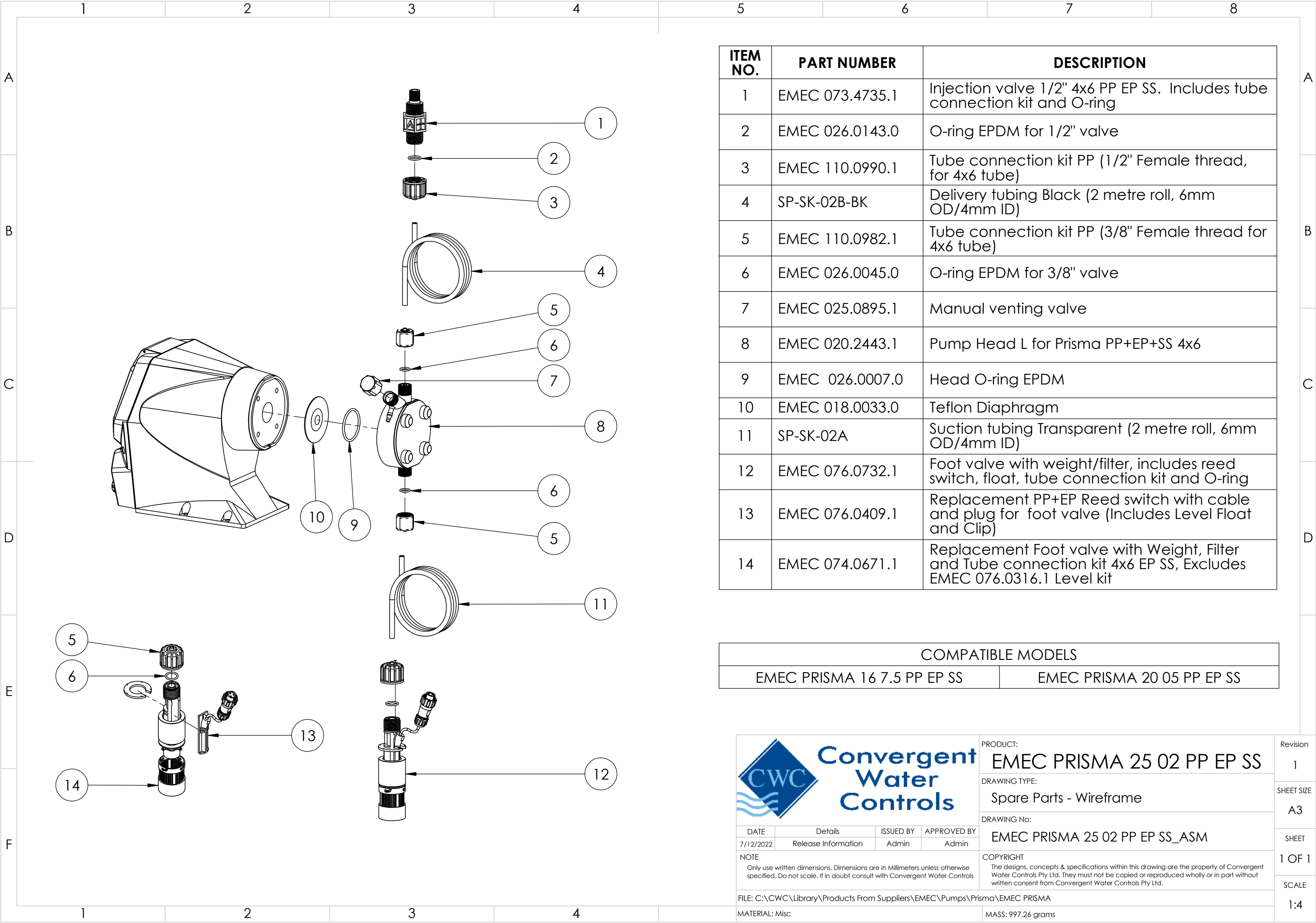
DRAWING TYPE:
Spare Parts

DRAWING No:
EMEC PRISMA 25 02 PP EP SS_ASM

COPYRIGHT
The designs, concepts & specifications within this drawing are the property of Convergent Water Controls Pty Ltd. They must not be copied or reproduced wholly or in part without written consent from Convergent Water Controls Pty Ltd.

MASS: 997.26 grams

Revision	1
SHEET SIZE	A3
SHEET	1 OF 1
SCALE	1:4



ITEM NO.	PART NUMBER	DESCRIPTION
1	EMEC 073.4735.1	Injection valve 1/2" 4x6 PP EP SS. Includes tube connection kit and O-ring
2	EMEC 026.0143.0	O-ring EPDM for 1/2" valve
3	EMEC 110.0990.1	Tube connection kit PP (1/2" Female thread, for 4x6 tube)
4	SP-SK-02B-BK	Delivery tubing Black (2 metre roll, 6mm OD/4mm ID)
5	EMEC 110.0982.1	Tube connection kit PP (3/8" Female thread for 4x6 tube)
6	EMEC 026.0045.0	O-ring EPDM for 3/8" valve
7	EMEC 025.0895.1	Manual venting valve
8	EMEC 020.2443.1	Pump Head L for Prisma PP+EP+SS 4x6
9	EMEC 026.0007.0	Head O-ring EPDM
10	EMEC 018.0033.0	Teflon Diaphragm
11	SP-SK-02A	Suction tubing Transparent (2 metre roll, 6mm OD/4mm ID)
12	EMEC 076.0732.1	Foot valve with weight/filter, includes reed switch, float, tube connection kit and O-ring
13	EMEC 076.0409.1	Replacement PP+EP Reed switch with cable and plug for foot valve (Includes Level Float and Clip)
14	EMEC 074.0671.1	Replacement Foot valve with Weight, Filter and Tube connection kit 4x6 EP SS, Excludes EMEC 076.0316.1 Level kit

COMPATIBLE MODELS	
EMEC PRISMA 16 7.5 PP EP SS	EMEC PRISMA 20 05 PP EP SS



DATE	Details	ISSUED BY	APPROVED BY
7/12/2022	Release Information	Admin	Admin

NOTE
Only use written dimensions. Dimensions are in Millimeters unless otherwise specified. Do not scale. If in doubt consult with Convergent Water Controls

FILE: C:\CWC\Library\Products From Suppliers\EMEC\Pumps\Prisma\EMEC PRISMA

MATERIAL: Misc

PRODUCT:
EMEC PRISMA 25 02 PP EP SS

DRAWING TYPE:
Spare Parts - Wireframe

DRAWING No:
EMEC PRISMA 25 02 PP EP SS_ASM

COPYRIGHT
The designs, concepts & specifications within this drawing are the property of Convergent Water Controls Pty Ltd. They must not be copied or reproduced wholly or in part without written consent from Convergent Water Controls Pty Ltd.

MASS: 997.26 grams

Revision	1
SHEET SIZE	A3
SHEET	1 OF 1
SCALE	1:4