

ITEM NO.	PART NUMBER	DESCRIPTION
1	EMEC 073.1062.1	Injection valve 1/2" 4x6 FP. Includes tube connection kit and O-ring
2	EMEC 026.0150.0	O-ring Viton for 1/2" valve
3	EMEC 110.6844.1	Tube connection kit PVDF (1/2" Female thread, for 4x6 tube)
4	SP-SK-02B-BK	Delivery tubing Black (2 metre roll, 6mm OD/4mm ID)
5	EMEC 110.6843.1	Tube connection kit PVDF (3/8" Female thread for 4x6 tube)
6	EMEC 026.0042.0	O-ring Viton for 3/8" valve
7	EMEC 025.0894.1	Manual venting valve
8	EMEC 020.2417.1	Pump Head L for Prisma PVDF+FP 4x6
9	EMEC 026.0009.0	Head O-ring Viton
10	EMEC 018.0033.0	Teflon Diaphragm
11	SP-SK-02A	Suction tubing Transparent (2 metre roll, 6mm OD/4mm ID)
12	EMEC 076.0652.1	Foot valve with weight/filter, includes reed switch, float, tube connection kit and O-ring
13	EMEC 076.0005.1	Replacement PVDF Reed switch with cable and plug for foot valve (Includes Level Float and Clip)
14	EMEC 074.0570.1	Replacement Foot valve with Weight, Filter and Tube connection kit 4x6 FP, Excludes EMEC 076.0149.1 Level kit

COMPATIBLE MODELS	
EMEC PRISMA 16 7.5 FP	EMEC PRISMA 20 05 FP



DATE	Details	ISSUED BY	APPROVED BY
7/12/2022	Release Information	Admin	Admin

NOTE  
Only use written dimensions. Dimensions are in Millimeters unless otherwise specified. Do not scale. If in doubt consult with Convergent Water Controls

FILE: C:\CWC\Library\Products From Suppliers\EMEC\Pumps\Prisma\EMEC PRISMA

MATERIAL: Misc

PRODUCT:  
EMEC PRISMA 25 02 FP

DRAWING TYPE:  
Spare Parts

DRAWING No:  
EMEC PRISMA 25 02 FP\_ASM

COPYRIGHT  
The designs, concepts & specifications within this drawing are the property of Convergent Water Controls Pty Ltd. They must not be copied or reproduced wholly or in part without written consent from Convergent Water Controls Pty Ltd.

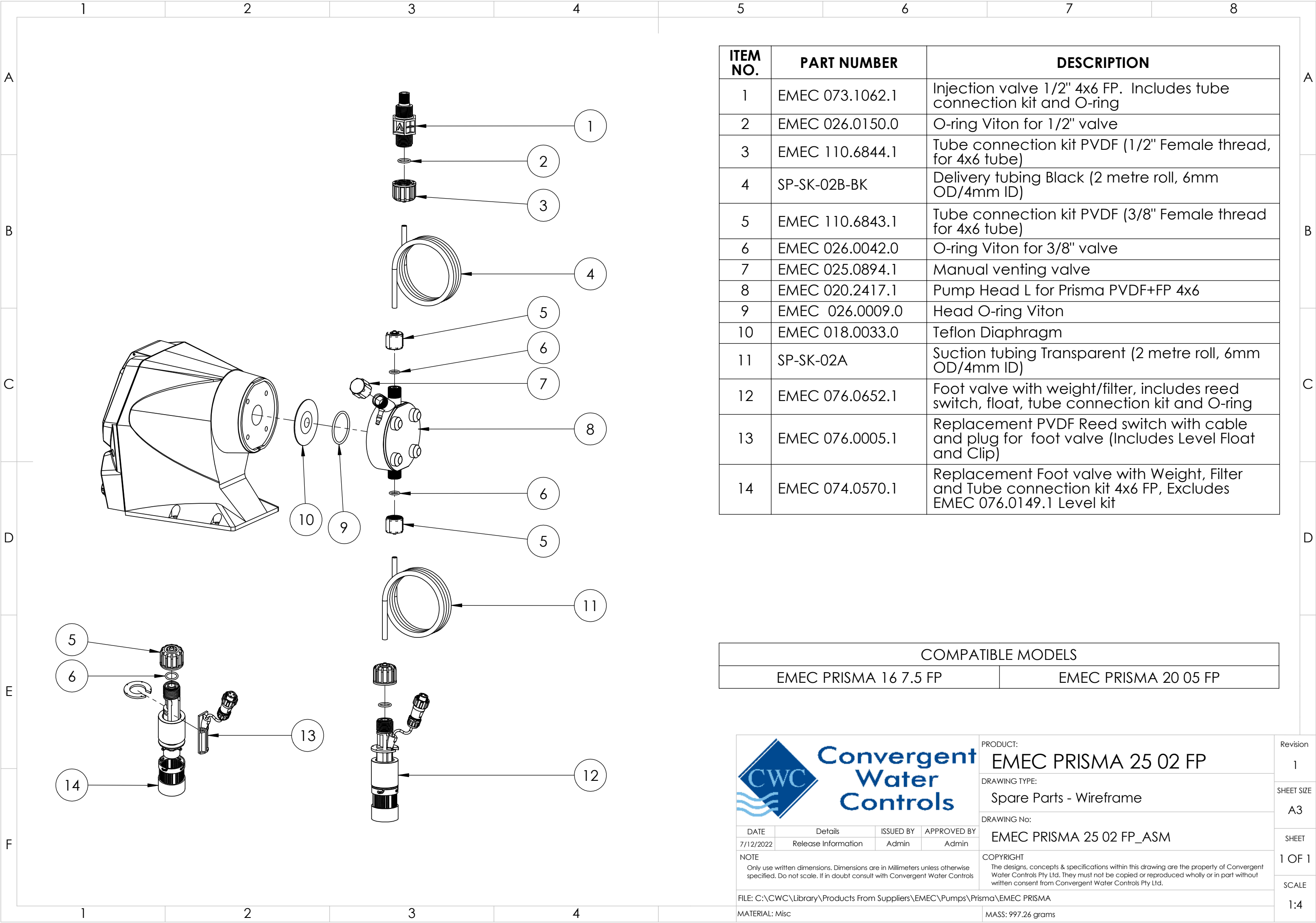
MASS: 997.26 grams

Revision  
1

SHEET SIZE  
A3

SHEET  
1 OF 1

SCALE  
1:4



ITEM NO.	PART NUMBER	DESCRIPTION
1	EMEC 073.1062.1	Injection valve 1/2" 4x6 FP. Includes tube connection kit and O-ring
2	EMEC 026.0150.0	O-ring Viton for 1/2" valve
3	EMEC 110.6844.1	Tube connection kit PVDF (1/2" Female thread, for 4x6 tube)
4	SP-SK-02B-BK	Delivery tubing Black (2 metre roll, 6mm OD/4mm ID)
5	EMEC 110.6843.1	Tube connection kit PVDF (3/8" Female thread for 4x6 tube)
6	EMEC 026.0042.0	O-ring Viton for 3/8" valve
7	EMEC 025.0894.1	Manual venting valve
8	EMEC 020.2417.1	Pump Head L for Prisma PVDF+FP 4x6
9	EMEC 026.0009.0	Head O-ring Viton
10	EMEC 018.0033.0	Teflon Diaphragm
11	SP-SK-02A	Suction tubing Transparent (2 metre roll, 6mm OD/4mm ID)
12	EMEC 076.0652.1	Foot valve with weight/filter, includes reed switch, float, tube connection kit and O-ring
13	EMEC 076.0005.1	Replacement PVDF Reed switch with cable and plug for foot valve (Includes Level Float and Clip)
14	EMEC 074.0570.1	Replacement Foot valve with Weight, Filter and Tube connection kit 4x6 FP, Excludes EMEC 076.0149.1 Level kit

COMPATIBLE MODELS	
EMEC PRISMA 16 7.5 FP	EMEC PRISMA 20 05 FP



DATE	Details	ISSUED BY	APPROVED BY
7/12/2022	Release Information	Admin	Admin

NOTE  
Only use written dimensions. Dimensions are in Millimeters unless otherwise specified. Do not scale. If in doubt consult with Convergent Water Controls

FILE: C:\CWC\Library\Products From Suppliers\EMEC\Pumps\Prisma\EMEC PRISMA

MATERIAL: Misc

PRODUCT:  
EMEC PRISMA 25 02 FP

DRAWING TYPE:  
Spare Parts - Wireframe

DRAWING No:  
EMEC PRISMA 25 02 FP\_ASM

COPYRIGHT  
The designs, concepts & specifications within this drawing are the property of Convergent Water Controls Pty Ltd. They must not be copied or reproduced wholly or in part without written consent from Convergent Water Controls Pty Ltd.

MASS: 997.26 grams

Revision  
1

SHEET SIZE  
A3

SHEET  
1 OF 1

SCALE  
1:4