
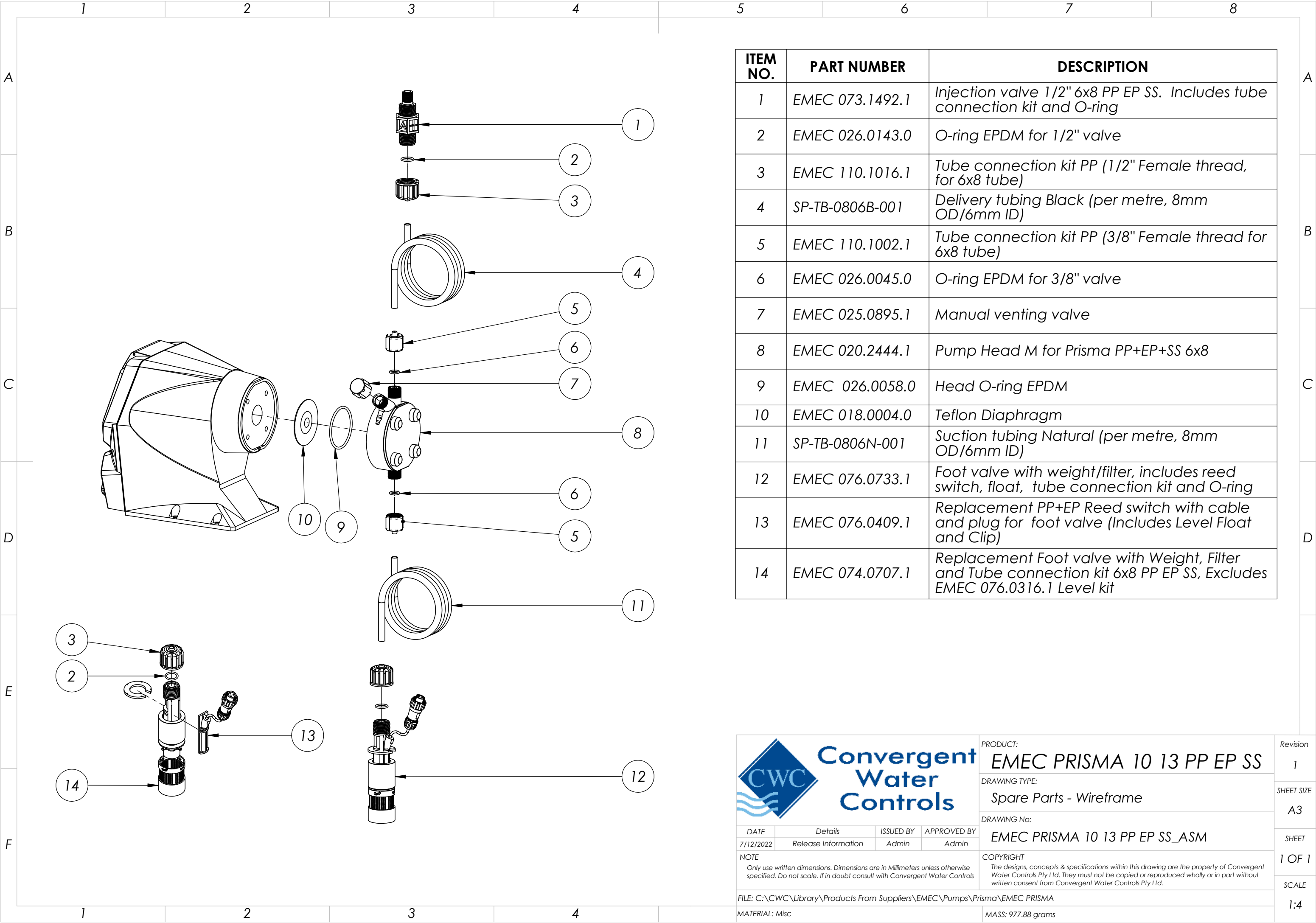



ITEM NO.	PART NUMBER	DESCRIPTION
1	EMEC 073.1492.1	Injection valve 1/2" 6x8 PP EP SS. Includes tube connection kit and O-ring
2	EMEC 026.0143.0	O-ring EPDM for 1/2" valve
3	EMEC 110.1016.1	Tube connection kit PP (1/2" Female thread, for 6x8 tube)
4	SP-TB-0806B-001	Delivery tubing Black (per metre, 8mm OD/6mm ID)
5	EMEC 110.1002.1	Tube connection kit PP (3/8" Female thread for 6x8 tube)
6	EMEC 026.0045.0	O-ring EPDM for 3/8" valve
7	EMEC 025.0895.1	Manual venting valve
8	EMEC 020.2444.1	Pump Head M for Prisma PP+EP+SS 6x8
9	EMEC 026.0058.0	Head O-ring EPDM
10	EMEC 018.0004.0	Teflon Diaphragm
11	SP-TB-0806N-001	Suction tubing Natural (per metre, 8mm OD/6mm ID)
12	EMEC 076.0733.1	Foot valve with weight/filter, includes reed switch, float, tube connection kit and O-ring
13	EMEC 076.0409.1	Replacement PP+EP Reed switch with cable and plug for foot valve (Includes Level Float and Clip)
14	EMEC 074.0707.1	Replacement Foot valve with Weight, Filter and Tube connection kit 6x8 PP EP SS, Excludes EMEC 076.0316.1 Level kit

<div></div> <div>Convergent Water Controls</div>				PRODUCT:	EMEC PRISMA 10 13 PP EP SS	Revision	1
				DRAWING TYPE:	Spare Parts	SHEET SIZE	A3
				DRAWING No:	EMEC PRISMA 10 13 PP EP SS_ASM	SHEET	1 OF 1
DATE	Details	ISSUED BY	APPROVED BY	COPYRIGHT		SCALE	1:4
7/12/2022	Release Information	Admin	Admin	The designs, concepts & specifications within this drawing are the property of Convergent Water Controls Pty Ltd. They must not be copied or reproduced wholly or in part without written consent from Convergent Water Controls Pty Ltd.			
NOTE							
Only use written dimensions. Dimensions are in Millimeters unless otherwise specified. Do not scale. If in doubt consult with Convergent Water Controls							
FILE: C:\CWC\Library\Products From Suppliers\EMEC\Pumps\Prisma\EMEC PRISMA							
MATERIAL: Misc				MASS: 977.88 grams			



ITEM NO.	PART NUMBER	DESCRIPTION
1	EMEC 073.1492.1	Injection valve 1/2" 6x8 PP EP SS. Includes tube connection kit and O-ring
2	EMEC 026.0143.0	O-ring EPDM for 1/2" valve
3	EMEC 110.1016.1	Tube connection kit PP (1/2" Female thread, for 6x8 tube)
4	SP-TB-0806B-001	Delivery tubing Black (per metre, 8mm OD/6mm ID)
5	EMEC 110.1002.1	Tube connection kit PP (3/8" Female thread for 6x8 tube)
6	EMEC 026.0045.0	O-ring EPDM for 3/8" valve
7	EMEC 025.0895.1	Manual venting valve
8	EMEC 020.2444.1	Pump Head M for Prisma PP+EP+SS 6x8
9	EMEC 026.0058.0	Head O-ring EPDM
10	EMEC 018.0004.0	Teflon Diaphragm
11	SP-TB-0806N-001	Suction tubing Natural (per metre, 8mm OD/6mm ID)
12	EMEC 076.0733.1	Foot valve with weight/filter, includes reed switch, float, tube connection kit and O-ring
13	EMEC 076.0409.1	Replacement PP+EP Reed switch with cable and plug for foot valve (Includes Level Float and Clip)
14	EMEC 074.0707.1	Replacement Foot valve with Weight, Filter and Tube connection kit 6x8 PP EP SS, Excludes EMEC 076.0316.1 Level kit

<div><div><div>Convergent</div><div>Water</div><div>Controls</div></div></div>				PRODUCT:		EMEC PRISMA 10 13 PP EP SS		Revision		1	
				DRAWING TYPE:		Spare Parts - Wireframe		SHEET SIZE		A3	
				DRAWING No:		EMEC PRISMA 10 13 PP EP SS_ASM		SHEET		1 OF 1	
				COPYRIGHT		The designs, concepts & specifications within this drawing are the property of Convergent Water Controls Pty Ltd. They must not be copied or reproduced wholly or in part without written consent from Convergent Water Controls Pty Ltd.		SCALE		1:4	
NOTE											
Only use written dimensions. Dimensions are in Millimeters unless otherwise specified. Do not scale. If in doubt consult with Convergent Water Controls											
FILE: C:\CWC\Library\Products From Suppliers\EMEC\Pumps\Prisma\EMEC PRISMA											
MATERIAL: Misc				MASS: 977.88 grams							