
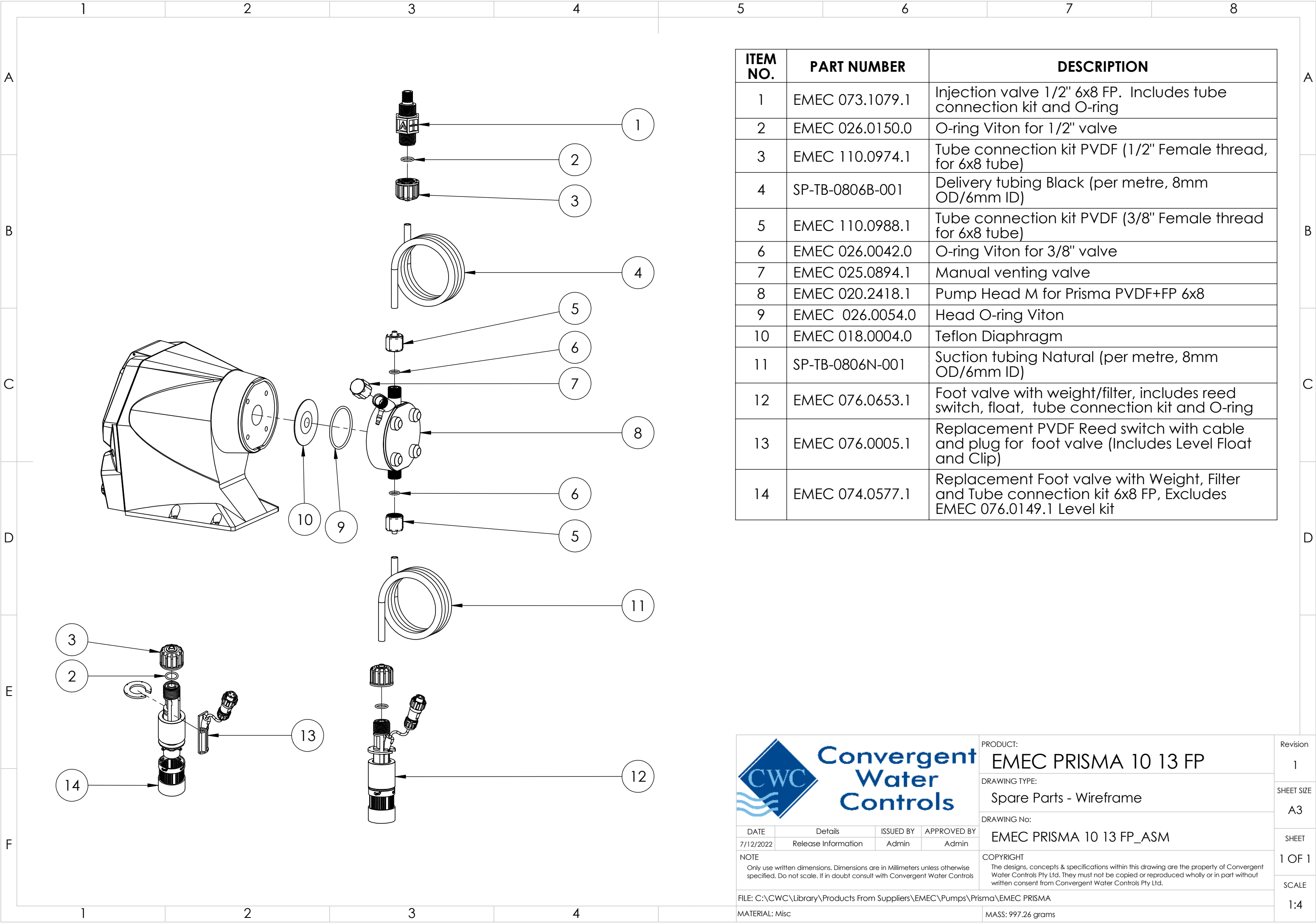



ITEM NO.	PART NUMBER	DESCRIPTION
1	EMEC 073.1079.1	Injection valve 1/2" 6x8 FP. Includes tube connection kit and O-ring
2	EMEC 026.0150.0	O-ring Viton for 1/2" valve
3	EMEC 110.0974.1	Tube connection kit PVDF (1/2" Female thread, for 6x8 tube)
4	SP-TB-0806B-001	Delivery tubing Black (per metre, 8mm OD/6mm ID)
5	EMEC 110.0988.1	Tube connection kit PVDF (3/8" Female thread for 6x8 tube)
6	EMEC 026.0042.0	O-ring Viton for 3/8" valve
7	EMEC 025.0894.1	Manual venting valve
8	EMEC 020.2418.1	Pump Head M for Prisma PVDF+FP 6x8
9	EMEC 026.0054.0	Head O-ring Viton
10	EMEC 018.0004.0	Teflon Diaphragm
11	SP-TB-0806N-001	Suction tubing Natural (per metre, 8mm OD/6mm ID)
12	EMEC 076.0653.1	Foot valve with weight/filter, includes reed switch, float, tube connection kit and O-ring
13	EMEC 076.0005.1	Replacement PVDF Reed switch with cable and plug for foot valve (Includes Level Float and Clip)
14	EMEC 074.0577.1	Replacement Foot valve with Weight, Filter and Tube connection kit 6x8 FP, Excludes EMEC 076.0149.1 Level kit

 <div>Convergent Water Controls</div>				PRODUCT:		Revision	
				EMEC PRISMA 10 13 FP		1	
				DRAWING TYPE:		SHEET SIZE	
				Spare Parts		A3	
DRAWING No:				EMEC PRISMA 10 13 FP_ASM		SHEET	
NOTE				COPYRIGHT		1 OF 1	
Only use written dimensions. Dimensions are in Millimeters unless otherwise specified. If in doubt consult with Convergent Water Controls				The designs, concepts & specifications within this drawing are the property of Convergent Water Controls Pty Ltd. They must not be copied or reproduced wholly or in part without written consent from Convergent Water Controls Pty Ltd.		SCALE	
FILE: C:\CWC\Library\Products From Suppliers\EMEC\Pumps\Prisma\EMEC PRISMA						1:4	
MATERIAL: Misc				MASS: 997.26 grams			



ITEM NO.	PART NUMBER	DESCRIPTION
1	EMEC 073.1079.1	Injection valve 1/2" 6x8 FP. Includes tube connection kit and O-ring
2	EMEC 026.0150.0	O-ring Viton for 1/2" valve
3	EMEC 110.0974.1	Tube connection kit PVDF (1/2" Female thread, for 6x8 tube)
4	SP-TB-0806B-001	Delivery tubing Black (per metre, 8mm OD/6mm ID)
5	EMEC 110.0988.1	Tube connection kit PVDF (3/8" Female thread for 6x8 tube)
6	EMEC 026.0042.0	O-ring Viton for 3/8" valve
7	EMEC 025.0894.1	Manual venting valve
8	EMEC 020.2418.1	Pump Head M for Prisma PVDF+FP 6x8
9	EMEC 026.0054.0	Head O-ring Viton
10	EMEC 018.0004.0	Teflon Diaphragm
11	SP-TB-0806N-001	Suction tubing Natural (per metre, 8mm OD/6mm ID)
12	EMEC 076.0653.1	Foot valve with weight/filter, includes reed switch, float, tube connection kit and O-ring
13	EMEC 076.0005.1	Replacement PVDF Reed switch with cable and plug for foot valve (Includes Level Float and Clip)
14	EMEC 074.0577.1	Replacement Foot valve with Weight, Filter and Tube connection kit 6x8 FP, Excludes EMEC 076.0149.1 Level kit



PRODUCT:
EMEC PRISMA 10 13 FP

DRAWING TYPE:
Spare Parts - Wireframe

DRAWING No:
EMEC PRISMA 10 13 FP_ASM

DATE 7/12/2022	Details Release Information	ISSUED BY Admin	APPROVED BY Admin
NOTE Only use written dimensions. Dimensions are in Millimeters unless otherwise specified. If in doubt consult with Convergent Water Controls			
FILE: C:\CWC\Library\Products From Suppliers\EMEC\Pumps\Prisma\EMEC PRISMA			
MATERIAL: Misc			

COPYRIGHT
The designs, concepts & specifications within this drawing are the property of Convergent Water Controls Pty Ltd. They must not be copied or reproduced wholly or in part without written consent from Convergent Water Controls Pty Ltd.

MASS: 997.26 grams

Revision 1
SHEET SIZE A3
SHEET 1 OF 1
SCALE 1:4