

ITEM NO.	PART NUMBER	DESCRIPTION
1	EMEC 073.1492.1	Injection valve 1/2" 6x8 EP. Includes tube connection kit and O-ring
2	EMEC 026.0143.0	O-ring EPDM for 1/2" valve
3	EMEC 110.1016.1	Tube connection kit PP (1/2" Female thread, for 6x8 tube)
4	SP-TB-0806B-001	Delivery tubing Black (per metre, 8mm OD/6mm ID)
5	EMEC 025.0895.1	Manual venting valve
6	EMEC 020.2629.1	Pump head N. PP + EP + SS 6x8mm (Includes all valves, tube connection kits and head O-ring)
7	EMEC 026.0223.0	Head O-ring EPDM
8	EMEC 018.0022.0	Teflon Diaphragm
9	SP-TB-0806N-001	Suction tubing Natural (per metre, 8mm OD/6mm ID)
10	EMEC 076.0733.1	Foot valve with weight/filter, includes reed switch, float, tube connection kit and O-ring
11	EMEC 076.0409.1	Replacement PP+EP Reed switch with cable and plug for foot valve (Includes Level Float and Clip)
12	EMEC 074.0707.1	Replacement Foot valve with Weight, Filter and Tube connection kit 6x8 PP EP SS, Excludes EMEC 076.0316.1 Level kit



DATE	Details	ISSUED BY	APPROVED BY
7/12/2022	Release Information	Admin	LF

NOTE
Only use written dimensions. Dimensions are in Millimeters unless otherwise specified. If in doubt consult with Convergent Water Controls

FILE: C:\CWC\Library\Products From Suppliers\EMEC\Pumps\Prisma\EMEC PRISMA

MATERIAL: Misc

PRODUCT:
EMEC PRISMA 07 20 PP EP SS

DRAWING TYPE:
Spare Parts

DRAWING No:
EMEC PRISMA 07 20 PP EP SS_ASM

COPYRIGHT
The designs, concepts & specifications within this drawing are the property of Convergent Water Controls Pty Ltd. They must not be copied or reproduced wholly or in part without written consent from Convergent Water Controls Pty Ltd.

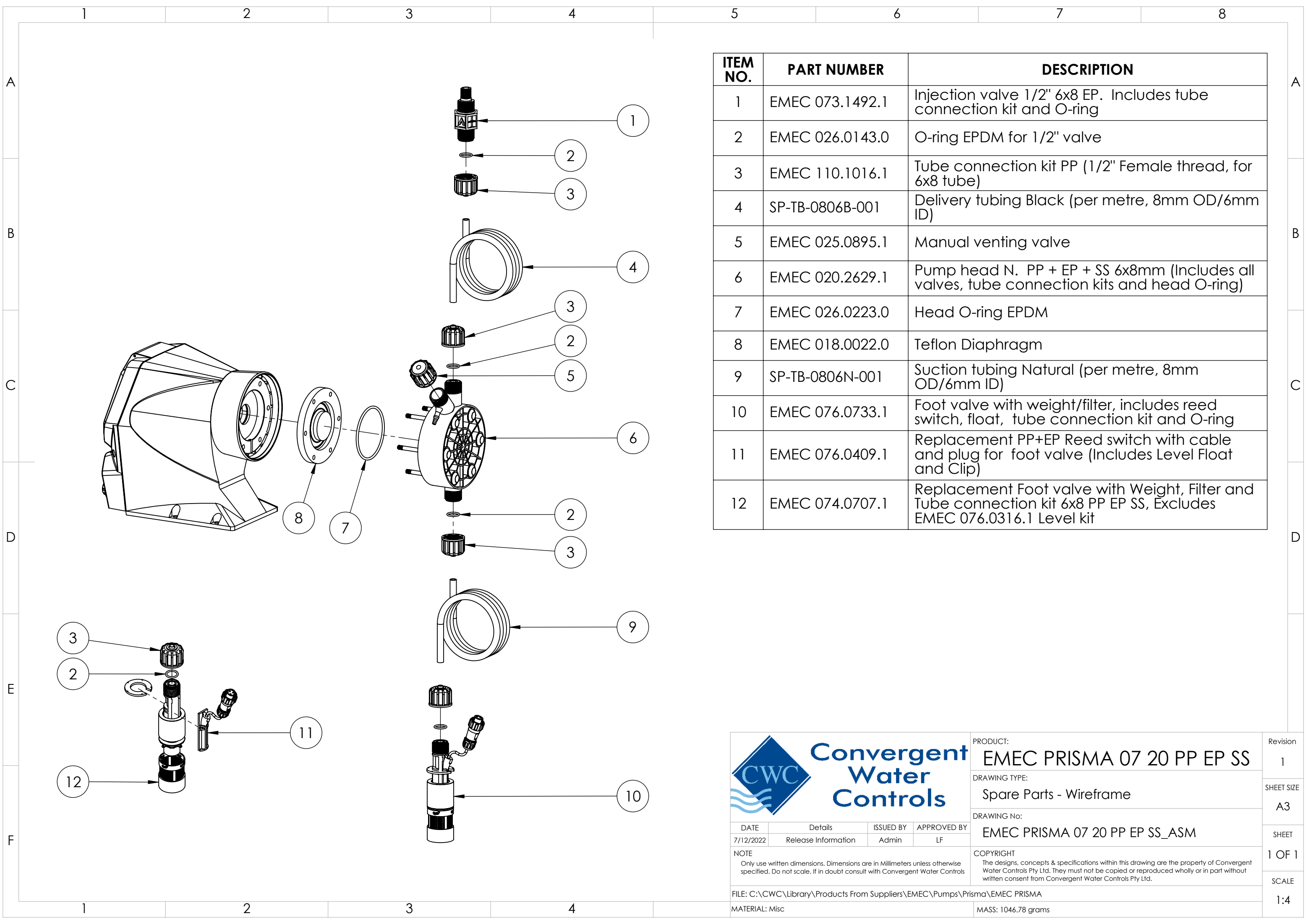
MASS: 1046.78 grams

Revision
1

SHEET SIZE
A3

SHEET
1 OF 1

SCALE
1:4



ITEM NO.	PART NUMBER	DESCRIPTION
1	EMEC 073.1492.1	Injection valve 1/2" 6x8 EP. Includes tube connection kit and O-ring
2	EMEC 026.0143.0	O-ring EPDM for 1/2" valve
3	EMEC 110.1016.1	Tube connection kit PP (1/2" Female thread, for 6x8 tube)
4	SP-TB-0806B-001	Delivery tubing Black (per metre, 8mm OD/6mm ID)
5	EMEC 025.0895.1	Manual venting valve
6	EMEC 020.2629.1	Pump head N. PP + EP + SS 6x8mm (Includes all valves, tube connection kits and head O-ring)
7	EMEC 026.0223.0	Head O-ring EPDM
8	EMEC 018.0022.0	Teflon Diaphragm
9	SP-TB-0806N-001	Suction tubing Natural (per metre, 8mm OD/6mm ID)
10	EMEC 076.0733.1	Foot valve with weight/filter, includes reed switch, float, tube connection kit and O-ring
11	EMEC 076.0409.1	Replacement PP+EP Reed switch with cable and plug for foot valve (Includes Level Float and Clip)
12	EMEC 074.0707.1	Replacement Foot valve with Weight, Filter and Tube connection kit 6x8 PP EP SS, Excludes EMEC 076.0316.1 Level kit



**Convergent
Water
Controls**

PRODUCT:
EMEC PRISMA 07 20 PP EP SS

DRAWING TYPE:
Spare Parts - Wireframe

DRAWING No:
EMEC PRISMA 07 20 PP EP SS_ASM

DATE	Details	ISSUED BY	APPROVED BY
7/12/2022	Release Information	Admin	LF

NOTE
Only use written dimensions. Dimensions are in Millimeters unless otherwise specified. If in doubt consult with Convergent Water Controls

COPYRIGHT
The designs, concepts & specifications within this drawing are the property of Convergent Water Controls Pty Ltd. They must not be copied or reproduced wholly or in part without written consent from Convergent Water Controls Pty Ltd.

FILE: C:\CWC\Library\Products From Suppliers\EMEC\Pumps\Prisma\EMEC PRISMA

MATERIAL: Misc

MASS: 1046.78 grams

Revision
1

SHEET SIZE
A3

SHEET
1 OF 1

SCALE
1:4