
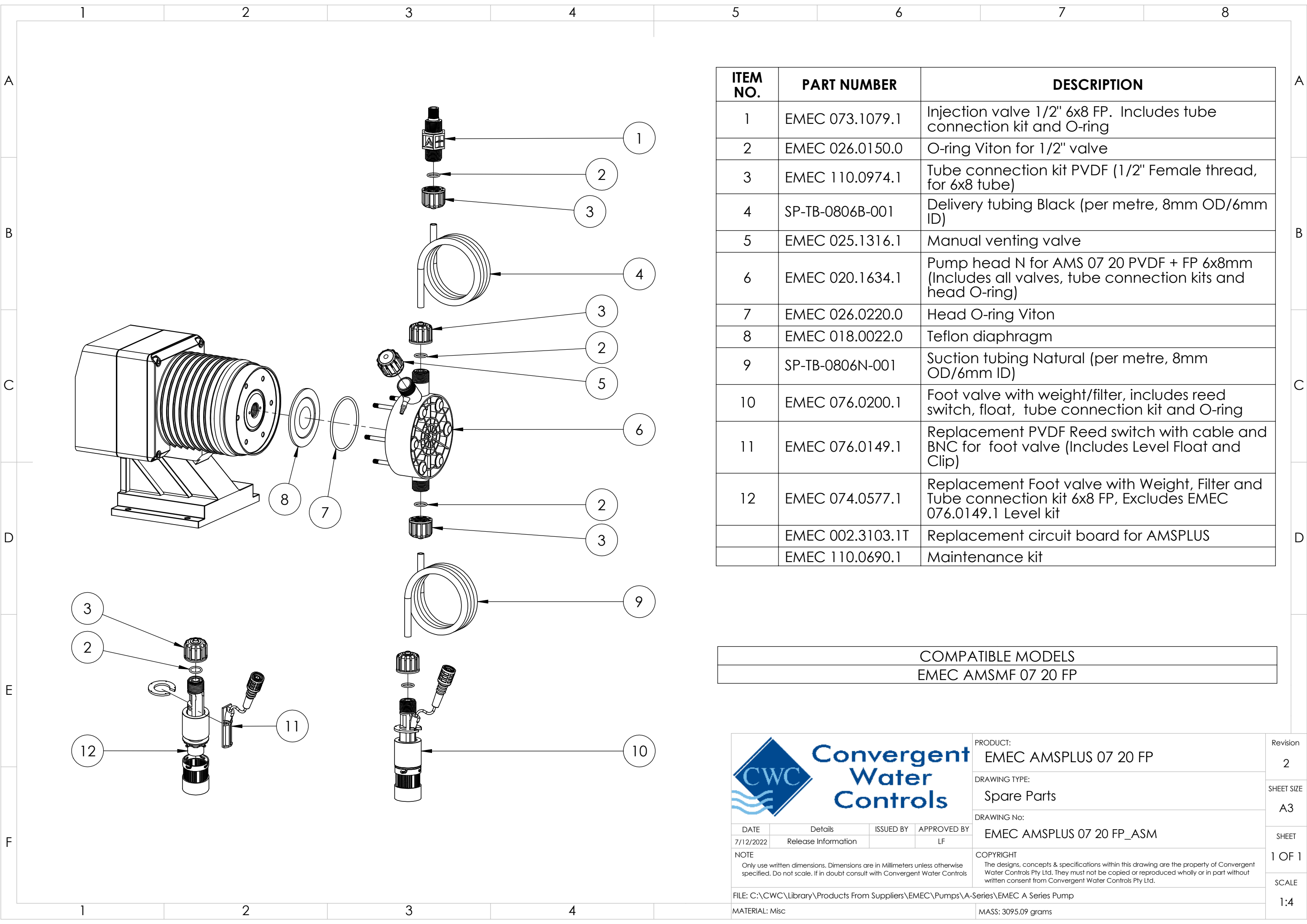


ITEM NO.	PART NUMBER	DESCRIPTION
1	EMEC 073.1079.1	Injection valve 1/2" 6x8 FP. Includes tube connection kit and O-ring
2	EMEC 026.0150.0	O-ring Viton for 1/2" valve
3	EMEC 110.0974.1	Tube connection kit PVDF (1/2" Female thread, for 6x8 tube)
4	SP-TB-0806B-001	Delivery tubing Black (per metre, 8mm OD/6mm ID)
5	EMEC 025.1316.1	Manual venting valve
6	EMEC 020.1634.1	Pump head N for AMS 07 20 PVDF + FP 6x8mm (Includes all valves, tube connection kits and head O-ring)
7	EMEC 026.0220.0	Head O-ring Viton
8	EMEC 018.0022.0	Teflon diaphragm
9	SP-TB-0806N-001	Suction tubing Natural (per metre, 8mm OD/6mm ID)
10	EMEC 076.0200.1	Foot valve with weight/filter, includes reed switch, float, tube connection kit and O-ring
11	EMEC 076.0149.1	Replacement PVDF Reed switch with cable and BNC for foot valve (Includes Level Float and Clip)
12	EMEC 074.0577.1	Replacement Foot valve with Weight, Filter and Tube connection kit 6x8 FP, Excludes EMEC 076.0149.1 Level kit
	EMEC 002.3103.1T	Replacement circuit board for AMSPLUS
	EMEC 110.0690.1	Maintenance kit


COMPATIBLE MODELS
EMEC AMSMF 07 20 FP

				PRODUCT:	EMEC AMSPLUS 07 20 FP	Revision	2
				DRAWING TYPE:	Spare Parts	SHEET SIZE	A3
				DRAWING No:	EMEC AMSPLUS 07 20 FP_ASM	SHEET	1 OF 1
				NOTE	COPYRIGHT The designs, concepts & specifications within this drawing are the property of Convergent Water Controls Pty Ltd. They must not be copied or reproduced wholly or in part without written consent from Convergent Water Controls Pty Ltd.		
				FILE: C:\CWC\Library\Products From Suppliers\EMEC\Pumps\A-Series\EMEC A Series Pump	SCALE		
				MATERIAL: Misc	MASS: 3095.09 grams		



ITEM NO.	PART NUMBER	DESCRIPTION
1	EMEC 073.1079.1	Injection valve 1/2" 6x8 FP. Includes tube connection kit and O-ring
2	EMEC 026.0150.0	O-ring Viton for 1/2" valve
3	EMEC 110.0974.1	Tube connection kit PVDF (1/2" Female thread, for 6x8 tube)
4	SP-TB-0806B-001	Delivery tubing Black (per metre, 8mm OD/6mm ID)
5	EMEC 025.1316.1	Manual venting valve
6	EMEC 020.1634.1	Pump head N for AMS 07 20 PVDF + FP 6x8mm (Includes all valves, tube connection kits and head O-ring)
7	EMEC 026.0220.0	Head O-ring Viton
8	EMEC 018.0022.0	Teflon diaphragm
9	SP-TB-0806N-001	Suction tubing Natural (per metre, 8mm OD/6mm ID)
10	EMEC 076.0200.1	Foot valve with weight/filter, includes reed switch, float, tube connection kit and O-ring
11	EMEC 076.0149.1	Replacement PVDF Reed switch with cable and BNC for foot valve (Includes Level Float and Clip)
12	EMEC 074.0577.1	Replacement Foot valve with Weight, Filter and Tube connection kit 6x8 FP, Excludes EMEC 076.0149.1 Level kit
	EMEC 002.3103.1T	Replacement circuit board for AMSPLUS
	EMEC 110.0690.1	Maintenance kit

COMPATIBLE MODELS
EMEC AMSMF 07 20 FP



PRODUCT:  
EMEC AMSPLUS 07 20 FP

DRAWING TYPE:  
Spare Parts

DRAWING No:  
EMEC AMSPLUS 07 20 FP\_ASM

COPYRIGHT  
The designs, concepts & specifications within this drawing are the property of Convergent Water Controls Pty Ltd. They must not be copied or reproduced wholly or in part without written consent from Convergent Water Controls Pty Ltd.

DATE 7/12/2022	Details Release Information	ISSUED BY	APPROVED BY LF
NOTE Only use written dimensions. Dimensions are in Millimeters unless otherwise specified. Do not scale. If in doubt consult with Convergent Water Controls			
FILE: C:\CWC\Library\Products From Suppliers\EMEC\Pumps\A-Series\EMEC A Series Pump			
MATERIAL: Misc			

Revision 2
SHEET SIZE A3
SHEET 1 OF 1
SCALE 1:4

PRODUCT: EMEC AMSPLUS 07 20 FP

DRAWING TYPE: Spare Parts

DRAWING No: EMEC AMSPLUS 07 20 FP\_ASM

COPYRIGHT The designs, concepts & specifications within this drawing are the property of Convergent Water Controls Pty Ltd. They must not be copied or reproduced wholly or in part without written consent from Convergent Water Controls Pty Ltd.