


ITEM NO.	PART NUMBER	DESCRIPTION
1	EMEC 073.1062.1	Injection valve 1/2" 4x6 FP. Includes tube connection kit and O-ring
2	EMEC 026.0150.0	O-ring Viton for 1/2" valve
3	EMEC 110.6844.1	Tube connection kit PVDF (1/2" Female thread, for 4x6 tube)
4	SP-SK-02B-BK	Delivery tubing Black (2 metre roll, 6mm OD/4mm ID)
5	EMEC 110.6843.1	Tube connection kit PVDF (3/8" Female thread for 4x6 tube)
6	EMEC 026.0042.0	O-ring Viton for 3/8" valve
7	EMEC 025.0894.1	Manual venting valve
8	EMEC 020.1294.1	Pump head L for A Series PVDF+EP 4x6mm
9	EMEC 026.0009.0	Head O-Ring Viton
10	EMEC 018.0033.0	Teflon diaphragm
11	SP-SK-02A	Suction tubing Transparent (2 metre roll, 6mm OD/4mm ID)
12	EMEC 076.0147.1	Foot valve with weight/filter, includes reed switch, float, tube connection kit and O-ring
13	EMEC 076.0149.1	Replacement PVDF Reed switch with cable and BNC for foot valve (Includes Level Float and Clip)
14	EMEC 074.0570.1	Replacement Foot valve with Weight, Filter and Tube connection kit 4x6 FP, Excludes EMEC 076.0149.1 Level kit
	EMEC 002.3103.1T	Replacement circuit board for AMSPLUS
	EMEC 002.2810.1T	Replacement circuit board for AMSMF

COMPATIBLE MODELS
EMEC AMSMF 25 05 FP



PRODUCT:  
EMEC AMSPLUS 25 05 FP 4x6

DRAWING TYPE:  
Spare Parts

DRAWING No:  
EMEC AMSPLUS 25 05 FP 4x6\_ASM

DATE 8/11/2022	Details Release Information	ISSUED BY	APPROVED BY LF
NOTE Only use written dimensions. Dimensions are in Millimeters unless otherwise specified. Do not scale. If in doubt consult with Convergent Water Controls			
FILE: C:\CWC\Library\Products From Suppliers\EMEC\Pumps\A-Series\EMEC A Series Pump			
MATERIAL: Misc			

COPYRIGHT  
The designs, concepts & specifications within this drawing are the property of Convergent Water Controls Pty Ltd. They must not be copied or reproduced wholly or in part without written consent from Convergent Water Controls Pty Ltd.

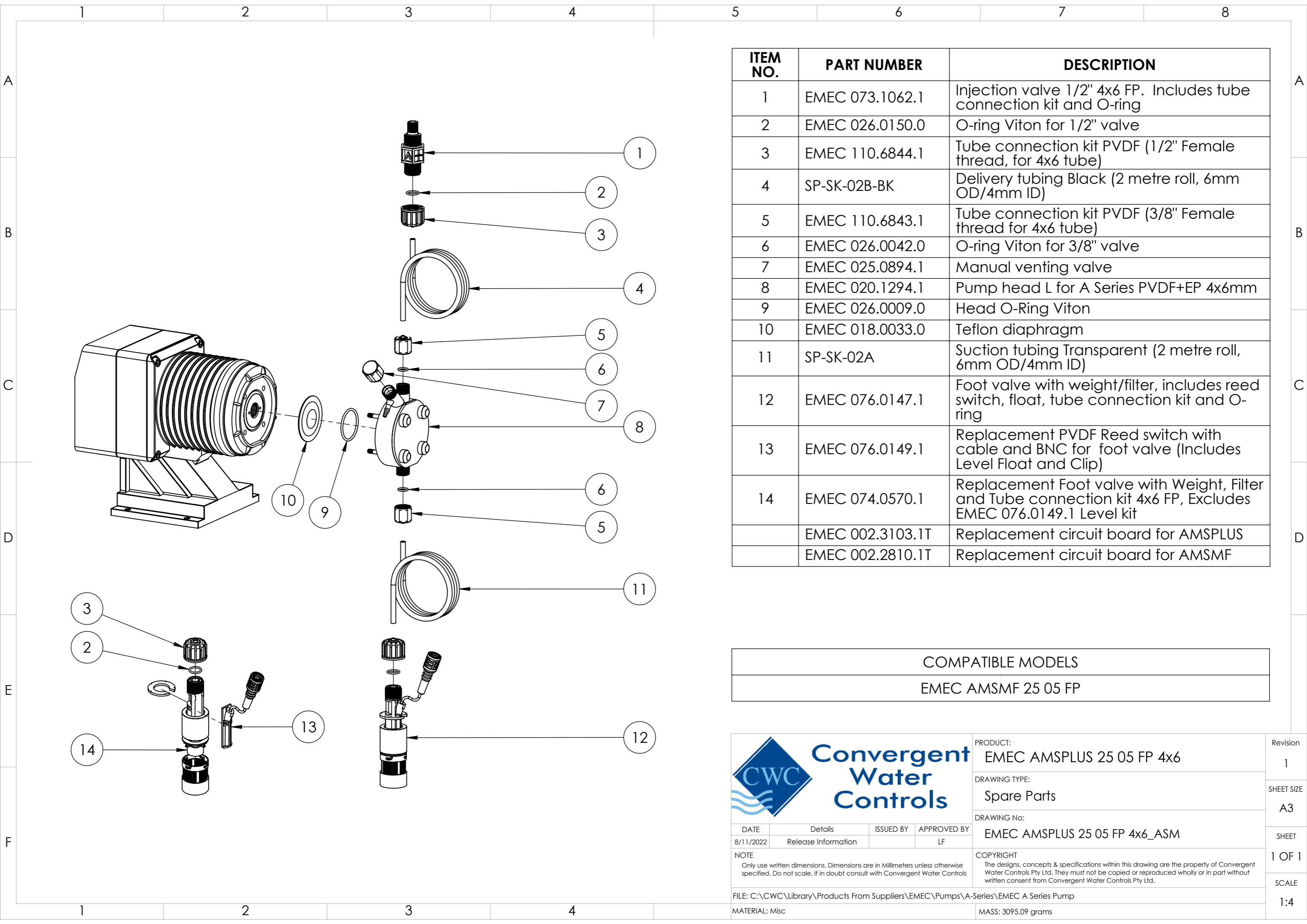
Revision  
1

SHEET SIZE  
A3

SHEET  
1 OF 1


SCALE  
1:4

MASS: 3095.09 grams



ITEM NO.	PART NUMBER	DESCRIPTION
1	EMEC 073.1062.1	Injection valve 1/2" 4x6 FP. Includes tube connection kit and O-ring
2	EMEC 026.0150.0	O-ring Viton for 1/2" valve
3	EMEC 110.6844.1	Tube connection kit PVDF (1/2" Female thread, for 4x6 tube)
4	SP-SK-02B-BK	Delivery tubing Black (2 metre roll, 6mm OD/4mm ID)
5	EMEC 110.6843.1	Tube connection kit PVDF (3/8" Female thread for 4x6 tube)
6	EMEC 026.0042.0	O-ring Viton for 3/8" valve
7	EMEC 025.0894.1	Manual venting valve
8	EMEC 020.1294.1	Pump head L for A Series PVDF+EP 4x6mm
9	EMEC 026.0009.0	Head O-Ring Viton
10	EMEC 018.0033.0	Teflon diaphragm
11	SP-SK-02A	Suction tubing Transparent (2 metre roll, 6mm OD/4mm ID)
12	EMEC 076.0147.1	Foot valve with weight/filter, includes reed switch, float, tube connection kit and O-ring
13	EMEC 076.0149.1	Replacement PVDF Reed switch with cable and BNC for foot valve (Includes Level Float and Clip)
14	EMEC 074.0570.1	Replacement Foot valve with Weight, Filter and Tube connection kit 4x6 FP, Excludes EMEC 076.0149.1 Level kit
	EMEC 002.3103.1T	Replacement circuit board for AMSPLUS
	EMEC 002.2810.1T	Replacement circuit board for AMSMF

COMPATIBLE MODELS
EMEC AMSMF 25 05 FP



PRODUCT:  
EMEC AMSPLUS 25 05 FP 4x6

DRAWING TYPE:  
Spare Parts

DRAWING No:  
EMEC AMSPLUS 25 05 FP 4x6\_ASM

DATE 8/11/2022	Details Release Information	ISSUED BY	APPROVED BY LF
NOTE Only use written dimensions. Dimensions are in Millimeters unless otherwise specified. Do not scale. If in doubt consult with Convergent Water Controls			
FILE: C:\CWC\Library\Products From Suppliers\EMEC\Pumps\A-Series\EMEC A Series Pump			
MATERIAL: Misc			

COPYRIGHT  
The designs, concepts & specifications within this drawing are the property of Convergent Water Controls Pty Ltd. They must not be copied or reproduced wholly or in part without written consent from Convergent Water Controls Pty Ltd.

Revision  
1

SHEET SIZE  
A3

SHEET  
1 OF 1

SCALE  
1:4

MASS: 3095.09 grams