
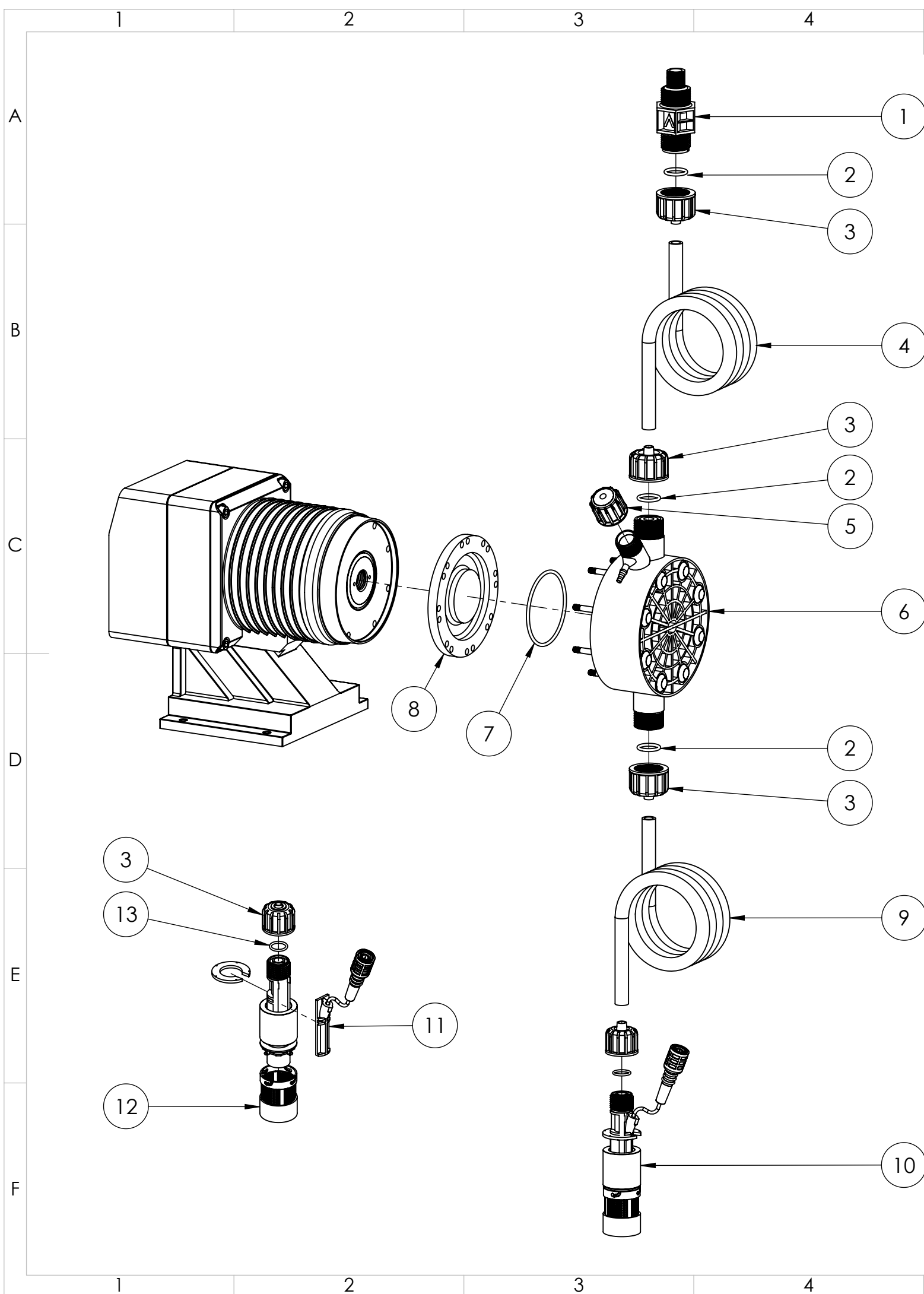


| ITEM NO. | PART NUMBER | DESCRIPTION |
|----------|------------------|--|
| 1 | EMEC 073.4752.1 | Injection valve 3/4" 8x12 PP EP SS. Includes tube connection kit and O-ring |
| 2 | EMEC 026.0376.0 | O-ring EPDM for 3/4" valve |
| 3 | EMEC 110.1039.1 | Tube connection kit PP (3/4" Female thread, for 8x12 tube) |
| 4 | EMEC 059.0612.0 | Delivery tubing Black (12mm OD/8mm ID) |
| 5 | EMEC 025.1315.1 | Manual venting valve |
| 6 | EMEC 020.2545.1 | Pump Head T for AMS 02 60 PP + EP + SS 8x12 (Includes all valves, tube connection kits and head O-ring) |
| 6A | EMEC 020.2561.1 | Pump Head S for AMS 03 40 PP + EP + SS 8x12 (Includes all valves, tube connection kits and head O-ring) |
| 7 | EMEC 026.0119.0 | Head O-ring EPDM for AMS 02 60 EP |
| 7A | EMEC 026.0027.0 | Head O-ring EPDM for AMS 03 40 EP |
| 8 | EMEC 018.0045.0 | Teflon Diaphragm for AMS 02 60 EP |
| 8A | EMEC 018.0003.0 | Teflon Diaphragm for AMS 03 40 EP |
| 9 | EMEC 059.0004.0 | Suction tubing Transparent per Metre (12mm OD/8mm ID) |
| 10 | EMEC 076.0609.1 | Foot valve with weight/filter, includes reed switch, tube connection kit and O-ring |
| 11 | EMEC 076.0316.1 | Replacement PP+EP Reed switch with cable and BNC for foot valve (Includes Level Float and Clip) |
| 12 | EMEC 074.0779.1 | Replacement Foot valve with Weight, Filter and Tube connection kit 8x12 PP EP SS, Excludes EMEC 076.0316.1 Level kit |
| 13 | EMEC 026.0143.0 | O-ring EPDM for 1/2" valve |
| | EMEC 002.3103.1T | Replacement circuit board for AMSPLUS |
| | EMEC 002.2810.1T | Replacement circuit board for AMSMF |
| | EMEC 110.9233.1 | Maintenance kit for AMS 02 60 EP |
| | EMEC 110.9311.1 | Maintenance kit for AMS 03 40 EP |


| COMPATIBLE MODELS | |
|---------------------------|-----------------------------|
| EMEC AMSMF 03 40 PP EP SS | EMEC AMSPLUS 03 40 PP EP SS |
| EMEC AMSMF 02 60 PP EP SS | |

| | | | | | | |
|---|---------------------|-----------|-------------|---|---------------------------------|------------|
| <div></div> <div>Convergent Water Controls</div> | | | | PRODUCT: | EMEC AMSPLUS 02 60 PP EP SS | Revision |
| | | | | DRAWING TYPE: | Spare Parts | 1 |
| | | | | DRAWING No: | EMEC AMSPLUS 02 60 PP EP SS_ASM | SHEET SIZE |
| | | | | | | A3 |
| DATE | Details | ISSUED BY | APPROVED BY | | | SHEET |
| 8/11/2022 | Release Information | | LF | | | 1 OF 1 |
| NOTE | | | | COPYRIGHT | | SCALE |
| Only use written dimensions. Dimensions are in Millimeters unless otherwise specified. Do not scale. If in doubt consult with Convergent Water Controls | | | | The designs, concepts & specifications within this drawing are the property of Convergent Water Controls Pty Ltd. They must not be copied or reproduced wholly or in part without written consent from Convergent Water Controls Pty Ltd. | | |
| FILE: C:\CWC\Library\Products From Suppliers\EMEC\Pumps\A-Series\EMEC A Series Pump | | | | | | 1:4 |
| MATERIAL: Misc | | | | MASS: 3095.09 grams | | |



| ITEM NO. | PART NUMBER | DESCRIPTION |
|----------|------------------|--|
| 1 | EMEC 073.4752.1 | Injection valve 3/4" 8x12 PP EP SS. Includes tube connection kit and O-ring |
| 2 | EMEC 026.0376.0 | O-ring EPDM for 3/4" valve |
| 3 | EMEC 110.1039.1 | Tube connection kit PP (3/4" Female thread, for 8x12 tube) |
| 4 | EMEC 059.0612.0 | Delivery tubing Black (12mm OD/8mm ID) |
| 5 | EMEC 025.1315.1 | Manual venting valve |
| 6 | EMEC 020.2545.1 | Pump Head T for AMS 02 60 PP + EP + SS 8x12 (Includes all valves, tube connection kits and head O-ring) |
| 6A | EMEC 020.2561.1 | Pump Head S for AMS 03 40 PP + EP + SS 8x12 (Includes all valves, tube connection kits and head O-ring) |
| 7 | EMEC 026.0119.0 | Head O-ring EPDM for AMS 02 60 EP |
| 7A | EMEC 026.0027.0 | Head O-ring EPDM for AMS 03 40 EP |
| 8 | EMEC 018.0045.0 | Teflon Diaphragm for AMS 02 60 EP |
| 8A | EMEC 018.0003.0 | Teflon Diaphragm for AMS 03 40 EP |
| 9 | EMEC 059.0004.0 | Suction tubing Transparent per Metre (12mm OD/8mm ID) |
| 10 | EMEC 076.0609.1 | Foot valve with weight/filter, includes reed switch, tube connection kit and O-ring |
| 11 | EMEC 076.0316.1 | Replacement PP+EP Reed switch with cable and BNC for foot valve (Includes Level Float and Clip) |
| 12 | EMEC 074.0779.1 | Replacement Foot valve with Weight, Filter and Tube connection kit 8x12 PP EP SS, Excludes EMEC 076.0316.1 Level kit |
| 13 | EMEC 026.0143.0 | O-ring EPDM for 1/2" valve |
| | EMEC 002.3103.1T | Replacement circuit board for AMSPLUS |
| | EMEC 002.2810.1T | Replacement circuit board for AMSMF |
| | EMEC 110.9233.1 | Maintenance kit for AMS 02 60 EP |
| | EMEC 110.9311.1 | Maintenance kit for AMS 03 40 EP |

| COMPATIBLE MODELS | |
|---------------------------|-----------------------------|
| EMEC AMSMF 03 40 PP EP SS | EMEC AMSPLUS 03 40 PP EP SS |
| EMEC AMSMF 02 60 PP EP SS | |

| | | | | | |
|---|--|---|---------------------------------|-------------|--------|
|  | | PRODUCT: | EMEC AMSPLUS 02 60 PP EP SS | Revision | 1 |
| | | DRAWING TYPE: | Spare Parts | SHEET SIZE | A3 |
| | | DRAWING No: | EMEC AMSPLUS 02 60 PP EP SS_ASM | SHEET | 1 OF 1 |
| DATE | | Details | ISSUED BY | APPROVED BY | SCALE |
| 7/11/2022 | | Release Information | | LF | 1:4 |
| NOTE | | COPYRIGHT | | | |
| Only use written dimensions. Dimensions are in Millimeters unless otherwise specified. Do not scale. If in doubt consult with Convergent Water Controls | | The designs, concepts & specifications within this drawing are the property of Convergent Water Controls Pty Ltd. They must not be copied or reproduced wholly or in part without written consent from Convergent Water Controls Pty Ltd. | | | |
| FILE: C:\CWC\Library\Products From Suppliers\EMEC\Pumps\A-Series\EMEC A Series Pump | | | | | |
| MATERIAL: Misc | | MASS: 3095.09 grams | | | |