
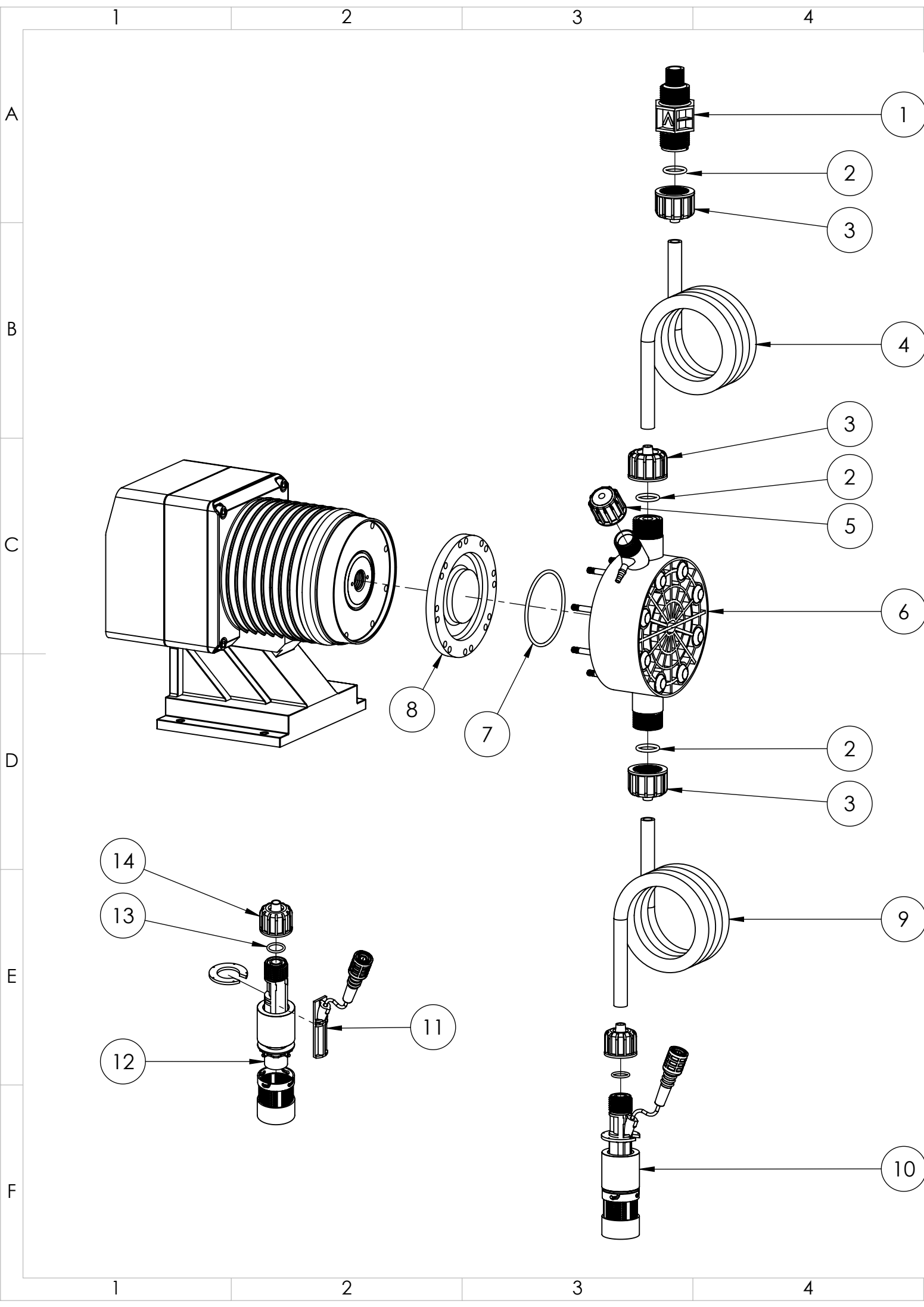


ITEM NO.	PART NUMBER	DESCRIPTION
1	EMEC 073.4679.1	Injection valve 3/4" 8x12 FP. Includes tube connection kit and O-ring
2	EMEC 026.0371.0	O-ring Viton for 3/4" valve
3	EMEC 110.1098.1	Tube connection kit PVDF (3/4" Female thread, for 8x12 tube)
4	EMEC 059.0612.0	Delivery tubing Black (12mm OD/8mm ID)
5	EMEC 025.1316.1	Manual venting valve
6	EMEC 020.1307.1	Pump Head T for AMS 02 60 PVDF + FP 8x12 (Includes all valves, tube connection kits and head O-ring)
6A	EMEC 020.2389.1	Pump Head S for AMS 03 40 FP 8x12 (Includes all valves, tube connection kits and head O-ring)
7	EMEC 026.0117.0	Head O-ring Viton for AMS 02 60 FP
7A	EMEC 026.0416.0	Head O-ring Viton for AMS 03 40 FP
8	EMEC 018.0045.0	Teflon Diaphragm for AMS 02 60 FP
8A	EMEC 018.0003.0	Teflon Diaphragm for AMS 03 40 FP
9	EMEC 059.0004.0	Suction tubing Transparent per Metre (12mm OD/8mm ID)
10	EMEC 076.0541.1	Foot valve with weight/filter, includes reed switch, tube connection kit and O-ring
11	EMEC 076.0149.1	Replacement PVDF Reed switch with cable and BNC for foot valve (Includes Level Float and Clip)
12	EMEC 074.0749.1	Replacement Foot valve with Weight, Filter and Tube connection kit 8x12 FP, Excludes EMEC 076.0149.1 Level kit
13	EMEC 026.0150.0	O-ring Viton for 1/2" valve
14	EMEC 110.1102.1	Tube connection kit PVDF (1/2" Female thread, for 8x12 tube)
	EMEC 002.3103.1T	Replacement circuit board for AMSPLUS
	EMEC 002.2810.1T	Replacement circuit board for AMSMF
	EMEC 110.0694.1	Maintenance kit for AMS 02 60
	EMEC 110.0924.1	Maintenance kit for AMS 03 40


COMPATIBLE MODELS	
EMEC AMSPLUS 03 40 FP	EMEC AMSMF 03 40 FP
	EMEC AMSMF 02 60 FP

		PRODUCT:	EMEC AMSPLUS 02 60 FP	Revision	1
		DRAWING TYPE:	Spare Parts	SHEET SIZE	A3
		DRAWING No:	EMEC AMSPLUS 02 60 FP_ASM	SHEET	1 OF 1
DATE		Details	ISSUED BY	APPROVED BY	SCALE
7/11/2022		Release Information		LF	1:4
NOTE		COPYRIGHT			
Only use written dimensions. Dimensions are in Millimeters unless otherwise specified. Do not scale. If in doubt consult with Convergent Water Controls		The designs, concepts & specifications within this drawing are the property of Convergent Water Controls Pty Ltd. They must not be copied or reproduced wholly or in part without written consent from Convergent Water Controls Pty Ltd.			
FILE: C:\CWC\Library\Products From Suppliers\EMEC\Pumps\A-Series\EMEC A Series Pump					
MATERIAL: Misc		MASS: 3095.09 grams			



ITEM NO.	PART NUMBER	DESCRIPTION
1	EMEC 073.4679.1	Injection valve 3/4" 8x12 FP. Includes tube connection kit and O-ring
2	EMEC 026.0371.0	O-ring Viton for 3/4" valve
3	EMEC 110.1098.1	Tube connection kit PVDF (3/4" Female thread, for 8x12 tube)
4	EMEC 059.0612.0	Delivery tubing Black (12mm OD/8mm ID)
5	EMEC 025.1316.1	Manual venting valve
6	EMEC 020.1307.1	Pump Head T for AMS 02 60 PVDF + FP 8x12 (Includes all valves, tube connection kits and head O-ring)
6A	EMEC 020.2389.1	Pump Head S for AMS 03 40 FP 8x12 (Includes all valves, tube connection kits and head O-ring)
7	EMEC 026.0117.0	Head O-ring Viton for AMS 02 60 FP
7A	EMEC 026.0416.0	Head O-ring Viton for AMS 03 40 FP
8	EMEC 018.0045.0	Teflon Diaphragm for AMS 02 60 FP
8A	EMEC 018.0003.0	Teflon Diaphragm for AMS 03 40 FP
9	EMEC 059.0004.0	Suction tubing Transparent per Metre (12mm OD/8mm ID)
10	EMEC 076.0541.1	Foot valve with weight/filter, includes reed switch, tube connection kit and O-ring
11	EMEC 076.0149.1	Replacement PVDF Reed switch with cable and BNC for foot valve (Includes Level Float and Clip)
12	EMEC 074.0749.1	Replacement Foot valve with Weight, Filter and Tube connection kit 8x12 FP, Excludes EMEC 076.0149.1 Level kit
13	EMEC 026.0150.0	O-ring Viton for 1/2" valve
14	EMEC 110.1102.1	Tube connection kit PVDF (1/2" Female thread, for 8x12 tube)
	EMEC 002.3103.1T	Replacement circuit board for AMSPLUS
	EMEC 002.2810.1T	Replacement circuit board for AMSMF
	EMEC 110.0694.1	Maintenance kit for AMS 02 60
	EMEC 110.0924.1	Maintenance kit for AMS 03 40

COMPATIBLE MODELS	
EMEC AMSPLUS 03 40 FP	EMEC AMSMF 03 40 FP
	EMEC AMSMF 02 60 FP

		PRODUCT:	EMEC AMSPLUS 02 60 FP	Revision	1
		DRAWING TYPE:	Spare Parts	SHEET SIZE	A3
		DRAWING No:	EMEC AMSPLUS 02 60 FP_ASM	SHEET	1 OF 1
DATE		Details	ISSUED BY	APPROVED BY	SCALE
7/11/2022		Release Information		LF	1:4
NOTE		COPYRIGHT			
Only use written dimensions. Dimensions are in Millimeters unless otherwise specified. Do not scale. If in doubt consult with Convergent Water Controls		The designs, concepts & specifications within this drawing are the property of Convergent Water Controls Pty Ltd. They must not be copied or reproduced wholly or in part without written consent from Convergent Water Controls Pty Ltd.			
FILE: C:\CWC\Library\Products From Suppliers\EMEC\Pumps\A-Series\EMEC A Series Pump					
MATERIAL: Misc		MASS: 3095.09 grams			