

ITEM NO.	PART NUMBER	DESCRIPTION
1	EMEC 018.0003.0	Teflon Diaphragm
2	EMEC 026.0416.0	Head O-ring Viton
3	EMEC 020.2396.1	Pump Head SA for AMSA 03 30 PMMA + FP 8x12 (Includes all valves, tube connection kits and head O-ring)
4	EMEC 025.1487.1	De-Gassing (Self venting) Valve (Includes tube connection kit)
5	EMEC 026.0371.0	O-Ring Viton for 1/2" valve
6	EMEC 110.1100.1	Tube connection kit PVDF (1/2" Female thread for 8x12 tube)
7	EMEC 025.1491.1	Delivery Valve (Includes tube connection kit)
8	EMEC 025.1486.1	Suction Valve (Includes tube connection kit)
9	EMEC 059.0612.0	Delivery tubing Black (12mm OD/8mm ID)
10	EMEC 073.4679.1	Injection valve 3/4" 8x12 FP. Includes tube connection kit and O-ring
11	EMEC 026.0371.0	O-ring Viton for 3/4" valve
12	EMEC 110.1098.1	Tube connection kit PVDF (3/4" Female thread, for 8x12 tube)
13	EMEC 059.0004.0	Suction tubing Transparent per Metre (12mm OD/8mm ID)
14	EMEC 076.0541.1	Foot valve with weight/filter, includes reed switch, tube connection kit and O-ring
15	EMEC 076.0149.1	Replacement PVDF Reed switch with cable and BNC for foot valve (Includes Level Float and Clip)
16	EMEC 074.0749.1	Replacement Foot valve with Weight, Filter and Tube connection kit 8x12 FP, Excludes EMEC 076.0149.1 Level kit
	EMEC 002.3103.1T	Replacement circuit board for AMS PLUS
	EMEC 002.2810.1T	Replacement circuit board for AMSAMF
	EMEC 110.0544.1	Maintenance kit

COMPATIBLE MODELS
EMEC AMSAMF 03 30 PMMA



**Convergent
Water
Controls**

PRODUCT:
EMEC AMSAPLUS 03 30 PMMA

DRAWING TYPE:
Spare Parts

DRAWING No:
EMEC AMSAPLUS 03 30 PMMA_ASM

DATE	Details	ISSUED BY	APPROVED BY
8/11/2022	Release Information		LF

NOTE
Only use written dimensions. Dimensions are in Millimeters unless otherwise specified. Do not scale. If in doubt consult with Convergent Water Controls

COPYRIGHT
The designs, concepts & specifications within this drawing are the property of Convergent Water Controls Pty Ltd. They must not be copied or reproduced wholly or in part without written consent from Convergent Water Controls Pty Ltd.

FILE: C:\CWC\Library\Products From Suppliers\EMEC\Pumps\A-Series\EMEC A Series Pump

MATERIAL: Misc

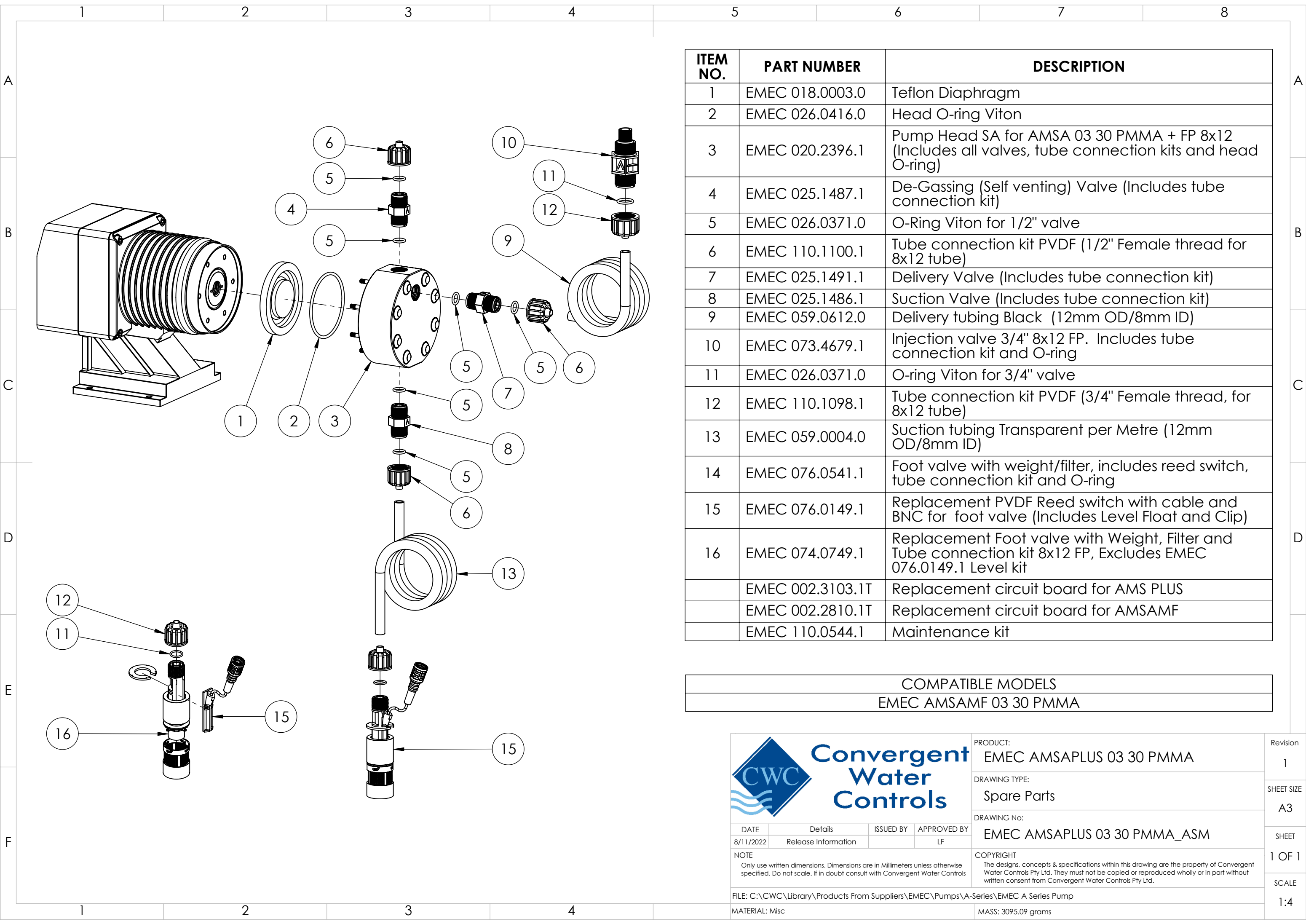
MASS: 3095.09 grams

Revision
1

SHEET SIZE
A3


SHEET
1 OF 1

SCALE
1:4



ITEM NO.	PART NUMBER	DESCRIPTION
1	EMEC 018.0003.0	Teflon Diaphragm
2	EMEC 026.0416.0	Head O-ring Viton
3	EMEC 020.2396.1	Pump Head SA for AMSA 03 30 PMMA + FP 8x12 (Includes all valves, tube connection kits and head O-ring)
4	EMEC 025.1487.1	De-Gassing (Self venting) Valve (Includes tube connection kit)
5	EMEC 026.0371.0	O-Ring Viton for 1/2" valve
6	EMEC 110.1100.1	Tube connection kit PVDF (1/2" Female thread for 8x12 tube)
7	EMEC 025.1491.1	Delivery Valve (Includes tube connection kit)
8	EMEC 025.1486.1	Suction Valve (Includes tube connection kit)
9	EMEC 059.0612.0	Delivery tubing Black (12mm OD/8mm ID)
10	EMEC 073.4679.1	Injection valve 3/4" 8x12 FP. Includes tube connection kit and O-ring
11	EMEC 026.0371.0	O-ring Viton for 3/4" valve
12	EMEC 110.1098.1	Tube connection kit PVDF (3/4" Female thread, for 8x12 tube)
13	EMEC 059.0004.0	Suction tubing Transparent per Metre (12mm OD/8mm ID)
14	EMEC 076.0541.1	Foot valve with weight/filter, includes reed switch, tube connection kit and O-ring
15	EMEC 076.0149.1	Replacement PVDF Reed switch with cable and BNC for foot valve (Includes Level Float and Clip)
16	EMEC 074.0749.1	Replacement Foot valve with Weight, Filter and Tube connection kit 8x12 FP, Excludes EMEC 076.0149.1 Level kit
	EMEC 002.3103.1T	Replacement circuit board for AMS PLUS
	EMEC 002.2810.1T	Replacement circuit board for AMSAMF
	EMEC 110.0544.1	Maintenance kit

COMPATIBLE MODELS
EMEC AMSAMF 03 30 PMMA



PRODUCT:

EMEC AMSAPLUS 03 30 PMMA

DRAWING TYPE:

Spare Parts

DRAWING No:

EMEC AMSAPLUS 03 30 PMMA_ASM

COPYRIGHT

The designs, concepts & specifications within this drawing are the property of Convergent Water Controls Pty Ltd. They must not be copied or reproduced wholly or in part without written consent from Convergent Water Controls Pty Ltd.

FILE:

C:\CWC\Library\Products From Suppliers\EMEC\Pumps\A-Series\EMEC A Series Pump

MATERIAL:

Misc

DATE	Details	ISSUED BY	APPROVED BY
8/11/2022	Release Information		LF

NOTE

Only use written dimensions. Dimensions are in Millimeters unless otherwise specified. Do not scale. If in doubt consult with Convergent Water Controls

Revision

1

SHEET SIZE

A3

SHEET

1 OF 1

SCALE

1:4