
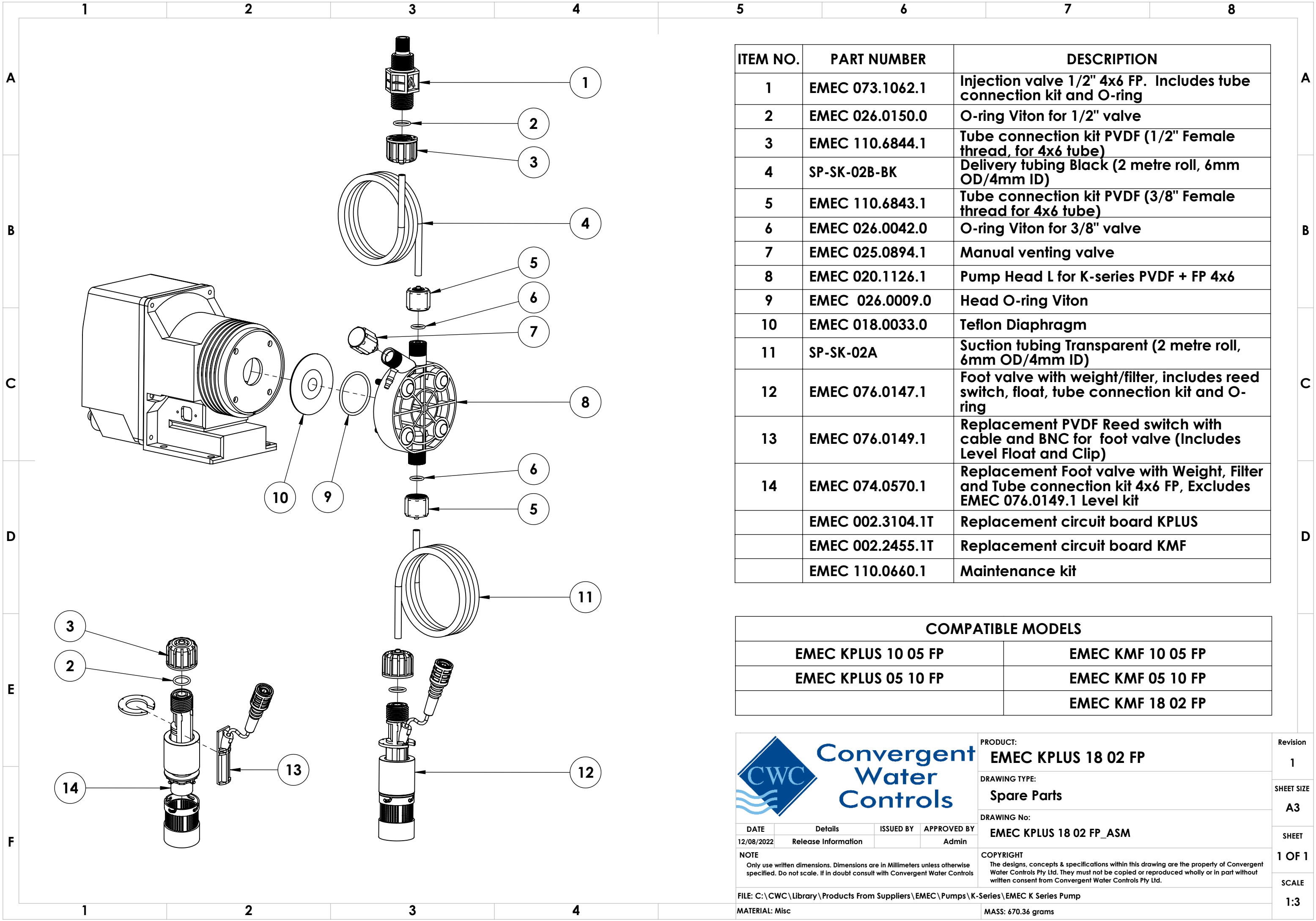


ITEM NO.	PART NUMBER	DESCRIPTION
1	EMEC 073.1062.1	Injection valve 1/2" 4x6 FP. Includes tube connection kit and O-ring
2	EMEC 026.0150.0	O-ring Viton for 1/2" valve
3	EMEC 110.6844.1	Tube connection kit PVDF (1/2" Female thread, for 4x6 tube)
4	SP-SK-02B-BK	Delivery tubing Black (2 metre roll, 6mm OD/4mm ID)
5	EMEC 110.6843.1	Tube connection kit PVDF (3/8" Female thread for 4x6 tube)
6	EMEC 026.0042.0	O-ring Viton for 3/8" valve
7	EMEC 025.0894.1	Manual venting valve
8	EMEC 020.1126.1	Pump Head L for K-series PVDF + FP 4x6
9	EMEC 026.0009.0	Head O-ring Viton
10	EMEC 018.0033.0	Teflon Diaphragm
11	SP-SK-02A	Suction tubing Transparent (2 metre roll, 6mm OD/4mm ID)
12	EMEC 076.0147.1	Foot valve with weight/filter, includes reed switch, float, tube connection kit and O-ring
13	EMEC 076.0149.1	Replacement PVDF Reed switch with cable and BNC for foot valve (Includes Level Float and Clip)
14	EMEC 074.0570.1	Replacement Foot valve with Weight, Filter and Tube connection kit 4x6 FP, Excludes EMEC 076.0149.1 Level kit
	EMEC 002.3104.1T	Replacement circuit board KPLUS
	EMEC 002.2455.1T	Replacement circuit board KMF
	EMEC 110.0660.1	Maintenance kit


COMPATIBLE MODELS	
EMEC KPLUS 10 05 FP	EMEC KMF 10 05 FP
EMEC KPLUS 05 10 FP	EMEC KMF 05 10 FP
	EMEC KMF 18 02 FP

		PRODUCT:	EMEC KPLUS 18 02 FP	Revision	1
		DRAWING TYPE:	Spare Parts	SHEET SIZE	A3
		DRAWING No:	EMEC KPLUS 18 02 FP_ASM	SHEET	1 OF 1
DATE		Details	ISSUED BY	APPROVED BY	SCALE
12/08/2022		Release Information		Admin	1:3
NOTE		COPYRIGHT			
Only use written dimensions. Dimensions are in Millimeters unless otherwise specified. Do not scale. If in doubt consult with Convergent Water Controls		The designs, concepts & specifications within this drawing are the property of Convergent Water Controls Pty Ltd. They must not be copied or reproduced wholly or in part without written consent from Convergent Water Controls Pty Ltd.			
FILE: C:\CWC\Library\Products From Suppliers\EMEC\Pumps\K-Series\EMEC K Series Pump					
MATERIAL: Misc		MASS: 670.36 grams			



ITEM NO.	PART NUMBER	DESCRIPTION
1	EMEC 073.1062.1	Injection valve 1/2" 4x6 FP. Includes tube connection kit and O-ring
2	EMEC 026.0150.0	O-ring Viton for 1/2" valve
3	EMEC 110.6844.1	Tube connection kit PVDF (1/2" Female thread, for 4x6 tube)
4	SP-SK-02B-BK	Delivery tubing Black (2 metre roll, 6mm OD/4mm ID)
5	EMEC 110.6843.1	Tube connection kit PVDF (3/8" Female thread for 4x6 tube)
6	EMEC 026.0042.0	O-ring Viton for 3/8" valve
7	EMEC 025.0894.1	Manual venting valve
8	EMEC 020.1126.1	Pump Head L for K-series PVDF + FP 4x6
9	EMEC 026.0009.0	Head O-ring Viton
10	EMEC 018.0033.0	Teflon Diaphragm
11	SP-SK-02A	Suction tubing Transparent (2 metre roll, 6mm OD/4mm ID)
12	EMEC 076.0147.1	Foot valve with weight/filter, includes reed switch, float, tube connection kit and O-ring
13	EMEC 076.0149.1	Replacement PVDF Reed switch with cable and BNC for foot valve (Includes Level Float and Clip)
14	EMEC 074.0570.1	Replacement Foot valve with Weight, Filter and Tube connection kit 4x6 FP, Excludes EMEC 076.0149.1 Level kit
	EMEC 002.3104.1T	Replacement circuit board KPLUS
	EMEC 002.2455.1T	Replacement circuit board KMF
	EMEC 110.0660.1	Maintenance kit

COMPATIBLE MODELS	
EMEC KPLUS 10 05 FP	EMEC KMF 10 05 FP
EMEC KPLUS 05 10 FP	EMEC KMF 05 10 FP
	EMEC KMF 18 02 FP

		PRODUCT:	EMEC KPLUS 18 02 FP	Revision	1
		DRAWING TYPE:	Spare Parts	SHEET SIZE	A3
		DRAWING No:	EMEC KPLUS 18 02 FP_ASM	SHEET	1 OF 1
DATE		Details	ISSUED BY	APPROVED BY	SCALE
12/08/2022		Release Information		Admin	1:3
NOTE		COPYRIGHT			
Only use written dimensions. Dimensions are in Millimeters unless otherwise specified. Do not scale. If in doubt consult with Convergent Water Controls		The designs, concepts & specifications within this drawing are the property of Convergent Water Controls Pty Ltd. They must not be copied or reproduced wholly or in part without written consent from Convergent Water Controls Pty Ltd.			
FILE: C:\CWC\Library\Products From Suppliers\EMEC\Pumps\K-Series\EMEC K Series Pump					
MATERIAL: Misc		MASS: 670.36 grams			