
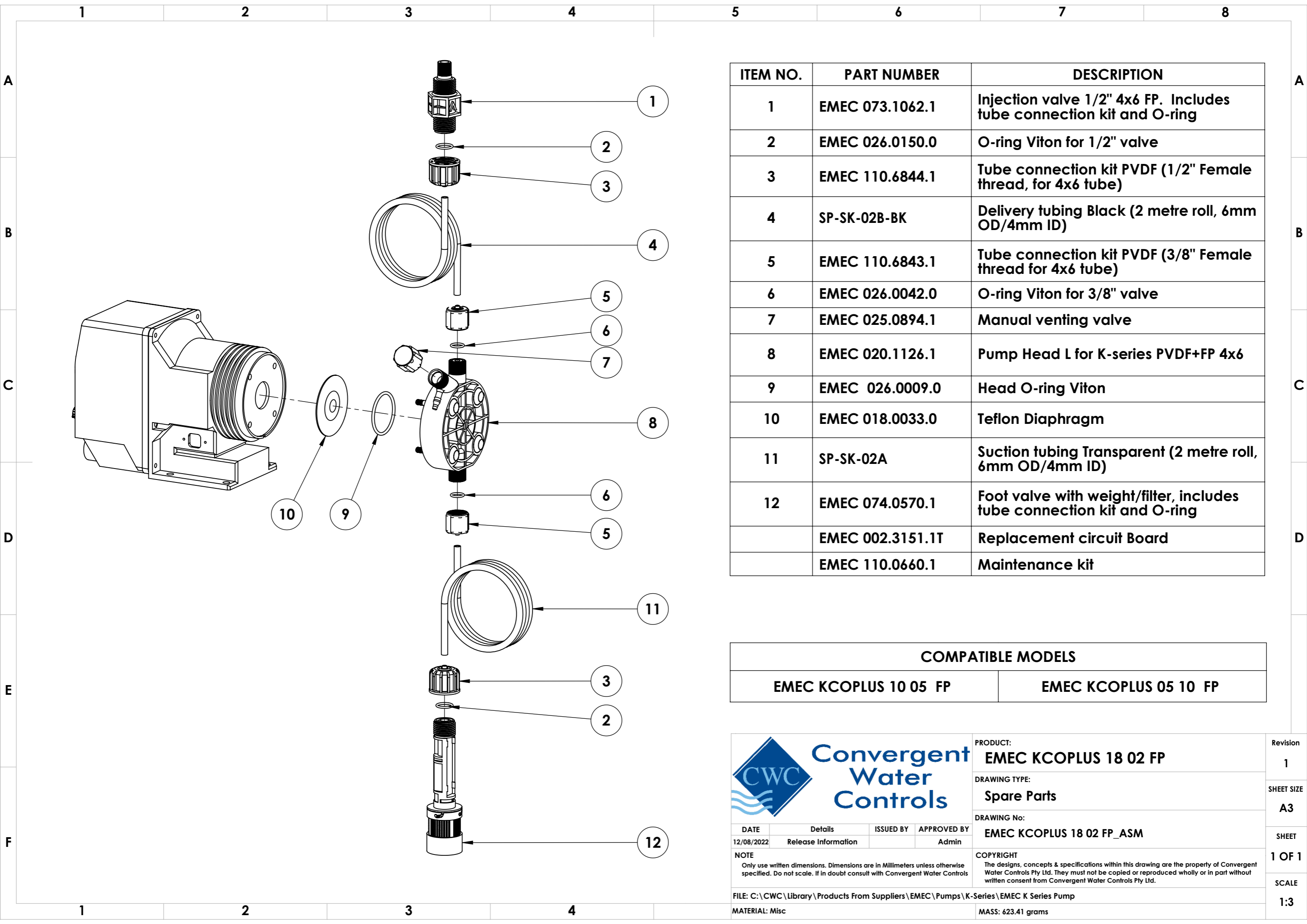


ITEM NO.	PART NUMBER	DESCRIPTION
1	EMEC 073.1062.1	Injection valve 1/2" 4x6 FP. Includes tube connection kit and O-ring
2	EMEC 026.0150.0	O-ring Viton for 1/2" valve
3	EMEC 110.6844.1	Tube connection kit PVDF (1/2" Female thread, for 4x6 tube)
4	SP-SK-02B-BK	Delivery tubing Black (2 metre roll, 6mm OD/4mm ID)
5	EMEC 110.6843.1	Tube connection kit PVDF (3/8" Female thread for 4x6 tube)
6	EMEC 026.0042.0	O-ring Viton for 3/8" valve
7	EMEC 025.0894.1	Manual venting valve
8	EMEC 020.1126.1	Pump Head L for K-series PVDF+FP 4x6
9	EMEC 026.0009.0	Head O-ring Viton
10	EMEC 018.0033.0	Teflon Diaphragm
11	SP-SK-02A	Suction tubing Transparent (2 metre roll, 6mm OD/4mm ID)
12	EMEC 074.0570.1	Foot valve with weight/filter, includes tube connection kit and O-ring
	EMEC 002.3151.1T	Replacement circuit Board
	EMEC 110.0660.1	Maintenance kit


COMPATIBLE MODELS	
EMEC KCOPLUS 10 05 FP	EMEC KCOPLUS 05 10 FP

		PRODUCT:	EMEC KCOPLUS 18 02 FP	Revision	1
		DRAWING TYPE:	Spare Parts	SHEET SIZE	A3
		DRAWING No:	EMEC KCOPLUS 18 02 FP_ASM	SHEET	1 OF 1
		NOTE	COPYRIGHT The designs, concepts & specifications within this drawing are the property of Convergent Water Controls Pty Ltd. They must not be copied or reproduced wholly or in part without written consent from Convergent Water Controls Pty Ltd.		
		FILE: C:\CWC\Library\Products From Suppliers\EMEC\Pumps\K-Series\EMEC K Series Pump			
		MATERIAL: Misc	MASS: 623.41 grams		
					SCALE 1:3



ITEM NO.	PART NUMBER	DESCRIPTION
1	EMEC 073.1062.1	Injection valve 1/2" 4x6 FP. Includes tube connection kit and O-ring
2	EMEC 026.0150.0	O-ring Viton for 1/2" valve
3	EMEC 110.6844.1	Tube connection kit PVDF (1/2" Female thread, for 4x6 tube)
4	SP-SK-02B-BK	Delivery tubing Black (2 metre roll, 6mm OD/4mm ID)
5	EMEC 110.6843.1	Tube connection kit PVDF (3/8" Female thread for 4x6 tube)
6	EMEC 026.0042.0	O-ring Viton for 3/8" valve
7	EMEC 025.0894.1	Manual venting valve
8	EMEC 020.1126.1	Pump Head L for K-series PVDF+FP 4x6
9	EMEC 026.0009.0	Head O-ring Viton
10	EMEC 018.0033.0	Teflon Diaphragm
11	SP-SK-02A	Suction tubing Transparent (2 metre roll, 6mm OD/4mm ID)
12	EMEC 074.0570.1	Foot valve with weight/filter, includes tube connection kit and O-ring
	EMEC 002.3151.1T	Replacement circuit Board
	EMEC 110.0660.1	Maintenance kit

COMPATIBLE MODELS	
EMEC KCOPLUS 10 05 FP	EMEC KCOPLUS 05 10 FP



PRODUCT:

EMEC KCOPLUS 18 02 FP

DRAWING TYPE:

Spare Parts

DRAWING No:

EMEC KCOPLUS 18 02 FP_ASM

COPYRIGHT

The designs, concepts & specifications within this drawing are the property of Convergent Water Controls Pty Ltd. They must not be copied or reproduced wholly or in part without written consent from Convergent Water Controls Pty Ltd.

DATE	Details	ISSUED BY	APPROVED BY
12/08/2022	Release Information		Admin

NOTE

Only use written dimensions. Dimensions are in Millimeters unless otherwise specified. Do not scale. If in doubt consult with Convergent Water Controls

FILE:

C:\CWC\Library\Products From Suppliers\EMEC\Pumps\K-Series\EMEC K Series Pump

MATERIAL:

Misc

Revision

1

SHEET SIZE

A3

SHEET

1 OF 1

SCALE

1:3