
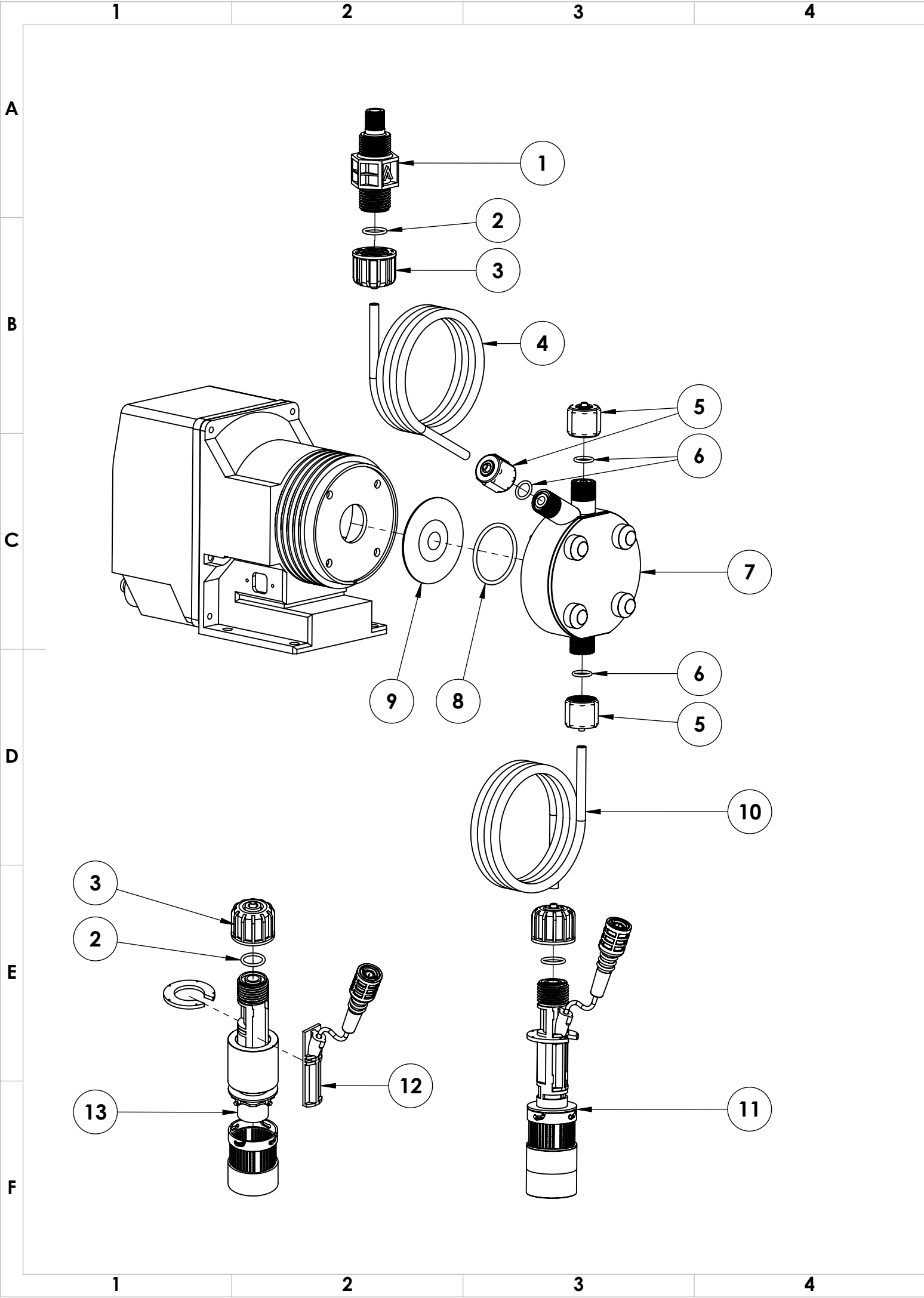


| ITEM NO. | PART NUMBER | DESCRIPTION |
|----------|------------------|---|
| 1 | EMEC 073.1062.1 | Injection valve 1/2" 4x6 FP. Includes tube connection kit and O-ring |
| 2 | EMEC 026.0150.0 | O-ring Viton for 1/2" valve |
| 3 | EMEC 110.6844.1 | Tube connection kit PVDF (1/2" Female thread, for 4x6 tube) |
| 4 | SP-SK-02B-BK | Delivery or self-venting (de-gassing) tubing Black (2 metre roll, 6mm OD/4mm ID) |
| 5 | EMEC 110.6843.1 | Tube connection kit PVDF (3/8" Female thread for 4x6 tube) |
| 6 | EMEC 026.0042.0 | O-ring Viton for 3/8" valve |
| 7 | EMEC 020.1320.1 | Pump Head LA for K-series PVDF+FP 4x6 |
| 8 | EMEC 026.0009.0 | Head O-ring Viton |
| 9 | EMEC 018.0033.0 | Teflon Diaphragm |
| 10 | SP-SK-02A | Suction tubing Transparent (2 metre roll, 6mm OD/4mm ID) |
| 11 | EMEC 076.0147.1 | Foot valve with weight/filter, includes reed switch, float, tube connection kit and O-ring |
| 12 | EMEC 076.0149.1 | Replacement PVDF Reed switch with cable and BNC for foot valve (Includes Level Float and Clip) |
| 13 | EMEC 074.0570.1 | Replacement Foot valve with Weight, Filter and Tube connection kit 4x6 FP, Excludes EMEC 076.0149.1 Level kit |
| | EMEC 002.3104.1T | Replacement circuit board KAPLUS |
| | EMEC 002.2455.1T | Replacement circuit board KAMF |
| | EMEC 110.0664.1 | Maintenance kit |


| COMPATIBLE MODELS |
|--------------------|
| EMEC KAMF 15 03 FP |

| | | | | |
|--|---------------------|-----------|-------------|--------------|
|  <div>Convergent Water Controls</div> | | | | Revision |
| | | | | 1 |
| | | | | SHEET SIZE |
| | | | | A3 |
| PRODUCT: EMEC KAPLUS 15 03 FP | | | | SHEET |
| DRAWING TYPE: Spare Parts | | | | |
| DRAWING No: EMEC KAPLUS 15 03 FP_ASM | | | | |
| DATE | Details | ISSUED BY | APPROVED BY | 1 OF 1 |
| 12/08/2022 | Release Information | | Admin | |
| NOTE Only use written dimensions. Dimensions are in Millimeters unless otherwise specified. Do not scale. If in doubt consult with Convergent Water Controls | | | | SCALE 1:3 |
| COPYRIGHT The designs, concepts & specifications within this drawing are the property of Convergent Water Controls Pty Ltd. They must not be copied or reproduced wholly or in part without written consent from Convergent Water Controls Pty Ltd. | | | | |
| FILE: C:\CWC\Library\Products From Suppliers\EMEC\Pumps\K-Series\EMEC K Series Pump | | | | |
| MATERIAL: Misc | | | | |
| MASS: 834.75 grams | | | | |



| ITEM NO. | PART NUMBER | DESCRIPTION |
|----------|------------------|---|
| 1 | EMEC 073.1062.1 | Injection valve 1/2" 4x6 FP. Includes tube connection kit and O-ring |
| 2 | EMEC 026.0150.0 | O-ring Viton for 1/2" valve |
| 3 | EMEC 110.6844.1 | Tube connection kit PVDF (1/2" Female thread, for 4x6 tube) |
| 4 | SP-SK-02B-BK | Delivery or self-venting (de-gassing) tubing Black (2 metre roll, 6mm OD/4mm ID) |
| 5 | EMEC 110.6843.1 | Tube connection kit PVDF (3/8" Female thread for 4x6 tube) |
| 6 | EMEC 026.0042.0 | O-ring Viton for 3/8" valve |
| 7 | EMEC 020.1320.1 | Pump Head LA for K-series PVDF+FP 4x6 |
| 8 | EMEC 026.0009.0 | Head O-ring Viton |
| 9 | EMEC 018.0033.0 | Teflon Diaphragm |
| 10 | SP-SK-02A | Suction tubing Transparent (2 metre roll, 6mm OD/4mm ID) |
| 11 | EMEC 076.0147.1 | Foot valve with weight/filter, includes reed switch, float, tube connection kit and O-ring |
| 12 | EMEC 076.0149.1 | Replacement PVDF Reed switch with cable and BNC for foot valve (Includes Level Float and Clip) |
| 13 | EMEC 074.0570.1 | Replacement Foot valve with Weight, Filter and Tube connection kit 4x6 FP, Excludes EMEC 076.0149.1 Level kit |
| | EMEC 002.3104.1T | Replacement circuit board KAPLUS |
| | EMEC 002.2455.1T | Replacement circuit board KAMF |
| | EMEC 110.0664.1 | Maintenance kit |

| |
|--------------------|
| COMPATIBLE MODELS |
| EMEC KAMF 15 03 FP |

| | | | | | | | |
|---|--|--|--|---|--|------------|--------|
|  | | | | PRODUCT: | EMEC KAPLUS 15 03 FP | Revision | 1 |
| | | | | DRAWING TYPE: | Spare Parts | SHEET SIZE | A3 |
| | | | | DRAWING No: | EMEC KAPLUS 15 03 FP_ASM | SHEET | 1 OF 1 |
| | | | | NOTE | COPYRIGHT The designs, concepts & specifications within this drawing are the property of Convergent Water Controls Pty Ltd. They must not be copied or reproduced wholly or in part without written consent from Convergent Water Controls Pty Ltd. | | |
| | | | | FILE: C:\CWC\Library\Products From Suppliers\EMEC\Pumps\K-Series\EMEC K Series Pump | SCALE | | |
| | | | | MATERIAL: Misc | MASS: 834.75 grams | | |