

ITEM NO.	PART NUMBER	DESCRIPTION
1	EMEC 018.0033.0	Teflon Diaphragm
2	EMEC 020.1945.1	Pump headLA for K-Series PMMA + FP 4x6
3	EMEC 026.0009.0	Head O-ring Viton
4	EMEC 110.0976.1	Tube connection kit PVDF (3/8" thread for 4x6)
5	EMEC 026.0042.0	O-Ring Viton for 3/8" valve
6	EMEC 025.0729.1	De-gassing (Self-venting) valve (Includes tube connection kit)
7	EMEC 025.0631.1	Suction valve (Includes tube connection kit)
8	EMEC 025.0631.1	Delivery valve (Includes tube connection kit)
9	SP-SK-02B-BK	Delivery tubing Black (2 metre roll, 6mm OD/4mm ID)
10	EMEC 073.1062.1	Injection valve 1/2" 4x6 FP. Includes tube connection kit and O-ring
11	EMEC 026.0150.0	O-ring Viton for 1/2" valve
12	EMEC 110.6844.1	Tube connection kit PVDF (1/2" Female thread, for 4x6 tube)
13	SP-SK-02A	Suction tubing Transparent (2 metre roll, 6mm OD/4mm ID)
14	EMEC 076.0147.1	Foot valve with weight/filter, includes reed switch, float, tube connection kit and O-ring
15	EMEC 076.0149.1	Replacement PVDF Reed switch with cable and BNC for foot valve (Includes Level Float and Clip)
16	EMEC 074.0570.1	Replacement Foot valve with Weight, Filter and Tube connection kit 4x6 FP, Excludes EMEC 076.0149.1 Level kit
	EMEC 002.3104.1T	Replacement circuit board KAPLUS
	EMEC 002.2455.1T	Replacement circuit board KAMF
	EMEC 110.0942.1	Maintenance kit

COMPATIBLE MODELS	
EMEC KAPLUS 18 01 PMMA CLO2	EMEC KAMF 18 01 PMMA CLO2
EMEC KAPLUS 08 5.5 PMMA CLO2	EMEC KAMF 10 3.5 PMMA CLO2
EMEC KAPLUS 05 7.5 PMMA CLO2	EMEC KAMF 08 5.5 PMMA CLO2
	EMEC KAMF 05 7.5 PMMA CLO2



**Convergent
Water
Controls**

PRODUCT:
EMEC KAPLUS 10 3.5 PMMA CLO2

DRAWING TYPE:
Spare Parts

DRAWING No:
EMEC KAPLUS 10 3.5 PMMA CLO2_ASM

COPYRIGHT
The designs, concepts & specifications within this drawing are the property of Convergent Water Controls Pty Ltd. They must not be copied or reproduced wholly or in part without written consent from Convergent Water Controls Pty Ltd.

DATE	Details	ISSUED BY	APPROVED BY
12/08/2022	Release Information		Admin

NOTE
Only use written dimensions. Dimensions are in Millimeters unless otherwise specified. Do not scale. If in doubt consult with Convergent Water Controls

FILE: C:\CWC\Library\Products From Suppliers\EMEC\Pumps\K-Series\EMEC K Series Pump

MATERIAL: Misc

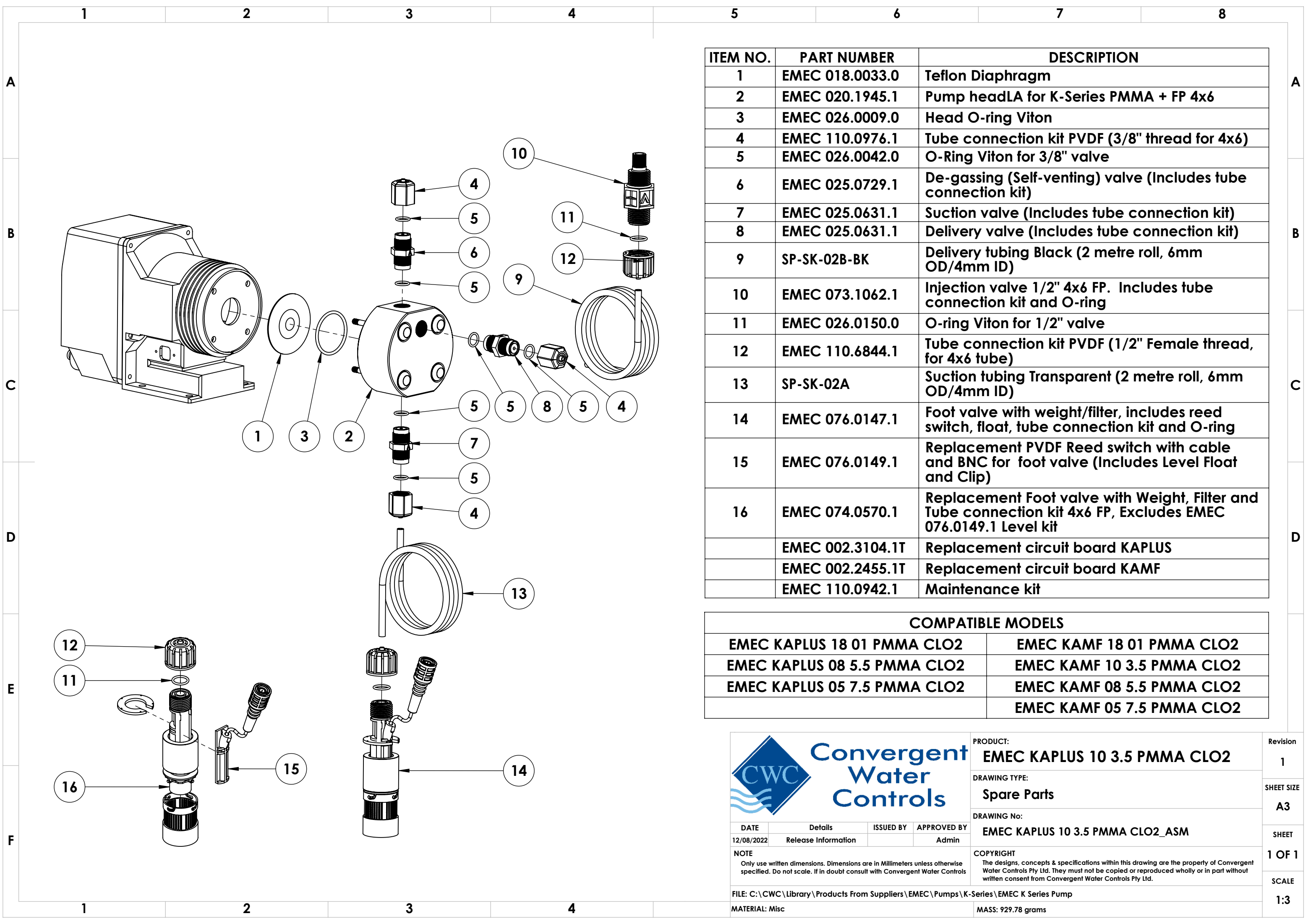
MASS: 929.78 grams

Revision
1

SHEET SIZE
A3

SHEET
1 OF 1

SCALE
1:3



ITEM NO.	PART NUMBER	DESCRIPTION
1	EMEC 018.0033.0	Teflon Diaphragm
2	EMEC 020.1945.1	Pump headLA for K-Series PMMA + FP 4x6
3	EMEC 026.0009.0	Head O-ring Viton
4	EMEC 110.0976.1	Tube connection kit PVDF (3/8" thread for 4x6)
5	EMEC 026.0042.0	O-Ring Viton for 3/8" valve
6	EMEC 025.0729.1	De-gassing (Self-venting) valve (Includes tube connection kit)
7	EMEC 025.0631.1	Suction valve (Includes tube connection kit)
8	EMEC 025.0631.1	Delivery valve (Includes tube connection kit)
9	SP-SK-02B-BK	Delivery tubing Black (2 metre roll, 6mm OD/4mm ID)
10	EMEC 073.1062.1	Injection valve 1/2" 4x6 FP. Includes tube connection kit and O-ring
11	EMEC 026.0150.0	O-ring Viton for 1/2" valve
12	EMEC 110.6844.1	Tube connection kit PVDF (1/2" Female thread, for 4x6 tube)
13	SP-SK-02A	Suction tubing Transparent (2 metre roll, 6mm OD/4mm ID)
14	EMEC 076.0147.1	Foot valve with weight/filter, includes reed switch, float, tube connection kit and O-ring
15	EMEC 076.0149.1	Replacement PVDF Reed switch with cable and BNC for foot valve (Includes Level Float and Clip)
16	EMEC 074.0570.1	Replacement Foot valve with Weight, Filter and Tube connection kit 4x6 FP, Excludes EMEC 076.0149.1 Level kit
	EMEC 002.3104.1T	Replacement circuit board KAPLUS
	EMEC 002.2455.1T	Replacement circuit board KAMF
	EMEC 110.0942.1	Maintenance kit

COMPATIBLE MODELS	
EMEC KAPLUS 18 01 PMMA CLO2	EMEC KAMF 18 01 PMMA CLO2
EMEC KAPLUS 08 5.5 PMMA CLO2	EMEC KAMF 10 3.5 PMMA CLO2
EMEC KAPLUS 05 7.5 PMMA CLO2	EMEC KAMF 08 5.5 PMMA CLO2
	EMEC KAMF 05 7.5 PMMA CLO2



**Convergent
Water
Controls**

PRODUCT:
EMEC KAPLUS 10 3.5 PMMA CLO2

DRAWING TYPE:
Spare Parts

DRAWING No:
EMEC KAPLUS 10 3.5 PMMA CLO2_ASM

DATE	Details	ISSUED BY	APPROVED BY
12/08/2022	Release Information		Admin

NOTE
Only use written dimensions. Dimensions are in Millimeters unless otherwise specified. Do not scale. If in doubt consult with Convergent Water Controls

COPYRIGHT
The designs, concepts & specifications within this drawing are the property of Convergent Water Controls Pty Ltd. They must not be copied or reproduced wholly or in part without written consent from Convergent Water Controls Pty Ltd.

FILE: C:\CWC\Library\Products From Suppliers\EMEC\Pumps\K-Series\EMEC K Series Pump

MATERIAL: Misc

MASS: 929.78 grams

Revision
1

SHEET SIZE
A3

SHEET
1 OF 1

SCALE
1:3