

ITEM NO.	PRODUCT CODE	DESCRIPTION
1	SP-SK-08	SEKO Wall bracket for SEKO peristaltic pumps
2	SP-SK-06C	Roller assembly with black chassis and 2 brown rollers. Roller diameter 11.3mm
3	SP-SK-01B	Squeeze tube, Santoprene 6x10mm (pre-greased with connectors) for PE-5 & PR-7 peristaltic pumps
4	SP-SK-07-T-A-KIT	Kit containing new face plate, new bearing and 2 screws, suitable for 2015 or later model pumps. Also includes old type face plate in case pump is the old type PE-5 or PR-7. (Note: Screws not required for PR-7)
4A	SP-SK-10	Bearing for SEKO Transaxle Pump
5	SP-SK-02B-BK	SEKO Discharge tubing Black (2 metre roll, 6mm OD/4mm ID)
6	SP-SK-03	SEKO Injection valve 3/8" BSP, Viton lip valve (ie duckbill), to suit 4x6 Tubing
7	SP-SK-04	SEKO Foot filter (supplied as either one-piece weighted PVDF assembly or as black PP filter with ceramic weight that slides over tube)
8	SP-SK-02A	SEKO Suction tubing Clear (2 metre roll, 6mm OD/4mm ID)

COMPATIBLE MODELS	
SEKO PE-5	SEKO PE-5-PLUG
SEKO PE-5-T	SEKO PE-5-T-PLUG
SEKO PR-7	SEKO PR-7-PLUG



PRODUCT:
SEKO PE-5

DRAWING TYPE:
Spare Parts

DRAWING No:
SEKO PE-5_ASM

COPYRIGHT
The designs, concepts & specifications within this drawing are the property of Convergent Water Controls Pty Ltd. They must not be copied or reproduced wholly or in part without written consent from Convergent Water Controls Pty Ltd.

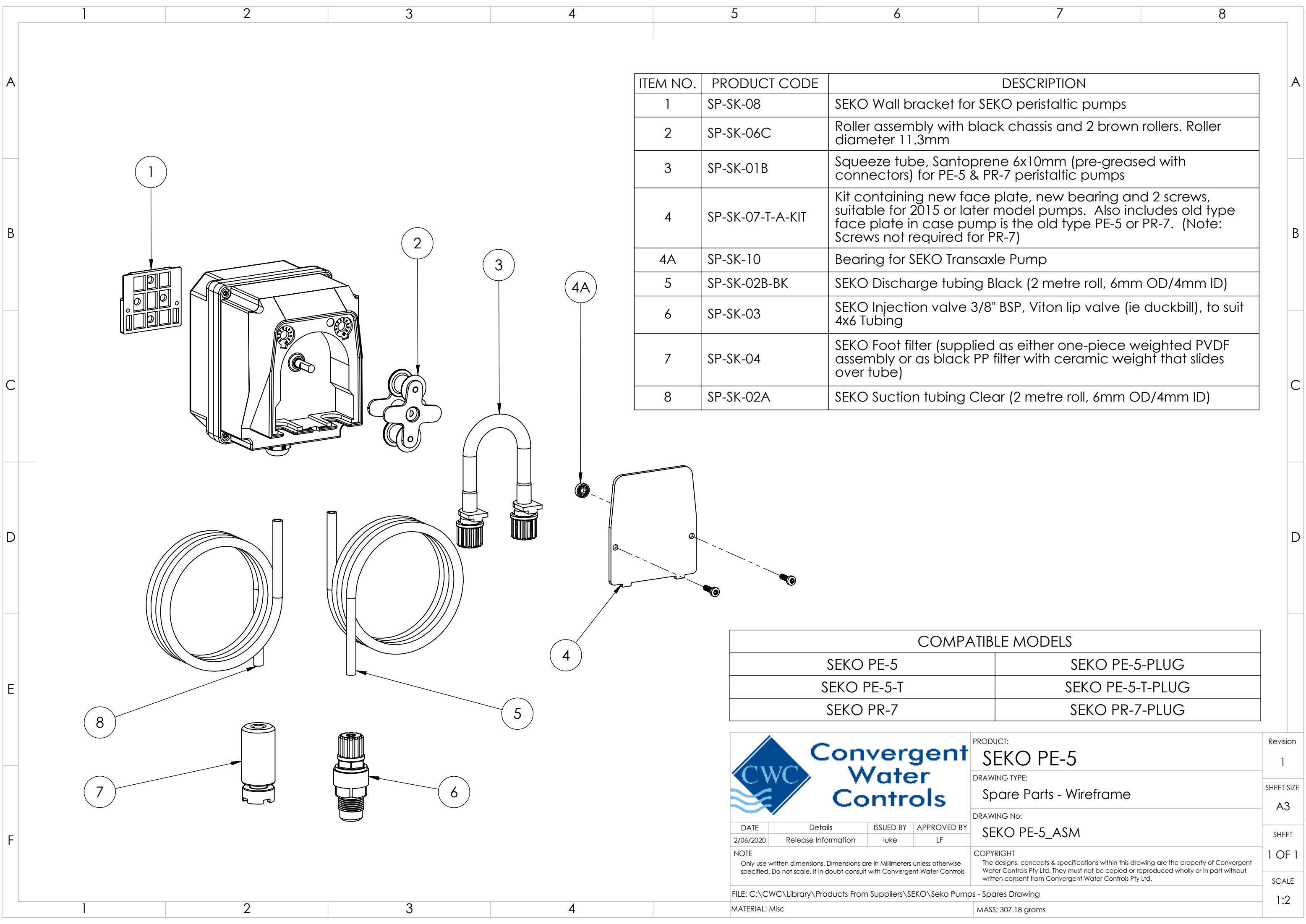
DATE	Details	ISSUED BY	APPROVED BY
2/06/2020	Release Information	luke	LF
NOTE Only use written dimensions. Dimensions are in Millimeters unless otherwise specified. Do not scale. If in doubt consult with Convergent Water Controls			
FILE: C:\CWC\Library\Products From Suppliers\SEKO\Seko Pumps - Spares Drawing			
MATERIAL: Misc		MASS: 307.18 grams	

Revision
1

SHEET SIZE
A3

SHEET
1 OF 1

SCALE
1:2



ITEM NO.	PRODUCT CODE	DESCRIPTION
1	SP-SK-08	SEKO Wall bracket for SEKO peristaltic pumps
2	SP-SK-06C	Roller assembly with black chassis and 2 brown rollers. Roller diameter 11.3mm
3	SP-SK-01B	Squeeze tube, Santoprene 6x10mm (pre-greased with connectors) for PE-5 & PR-7 peristaltic pumps
4	SP-SK-07-T-A-KIT	Kit containing new face plate, new bearing and 2 screws, suitable for 2015 or later model pumps. Also includes old type face plate in case pump is the old type PE-5 or PR-7. (Note: Screws not required for PR-7)
4A	SP-SK-10	Bearing for SEKO Transaxle Pump
5	SP-SK-02B-BK	SEKO Discharge tubing Black (2 metre roll, 6mm OD/4mm ID)
6	SP-SK-03	SEKO Injection valve 3/8" BSP, Viton lip valve (ie duckbill), to suit 4x6 Tubing
7	SP-SK-04	SEKO Foot filter (supplied as either one-piece weighted PVDF assembly or as black PP filter with ceramic weight that slides over tube)
8	SP-SK-02A	SEKO Suction tubing Clear (2 metre roll, 6mm OD/4mm ID)

COMPATIBLE MODELS	
SEKO PE-5	SEKO PE-5-PLUG
SEKO PE-5-T	SEKO PE-5-T-PLUG
SEKO PR-7	SEKO PR-7-PLUG



PRODUCT:
SEKO PE-5

DRAWING TYPE:
Spare Parts - Wireframe

DRAWING No:
SEKO PE-5_ASM

COPYRIGHT
The designs, concepts & specifications within this drawing are the property of Convergent Water Controls Pty Ltd. They must not be copied or reproduced wholly or in part without written consent from Convergent Water Controls Pty Ltd.

DATE	Details	ISSUED BY	APPROVED BY
2/06/2020	Release Information	luke	LF
NOTE Only use written dimensions. Dimensions are in Millimeters unless otherwise specified. Do not scale. If in doubt consult with Convergent Water Controls			
FILE: C:\CWC\Library\Products From Suppliers\SEKO\Seko Pumps - Spares Drawing			
MATERIAL: Misc		MASS: 307.18 grams	

Revision
1

SHEET SIZE
A3

SHEET
1 OF 1

SCALE
1:2