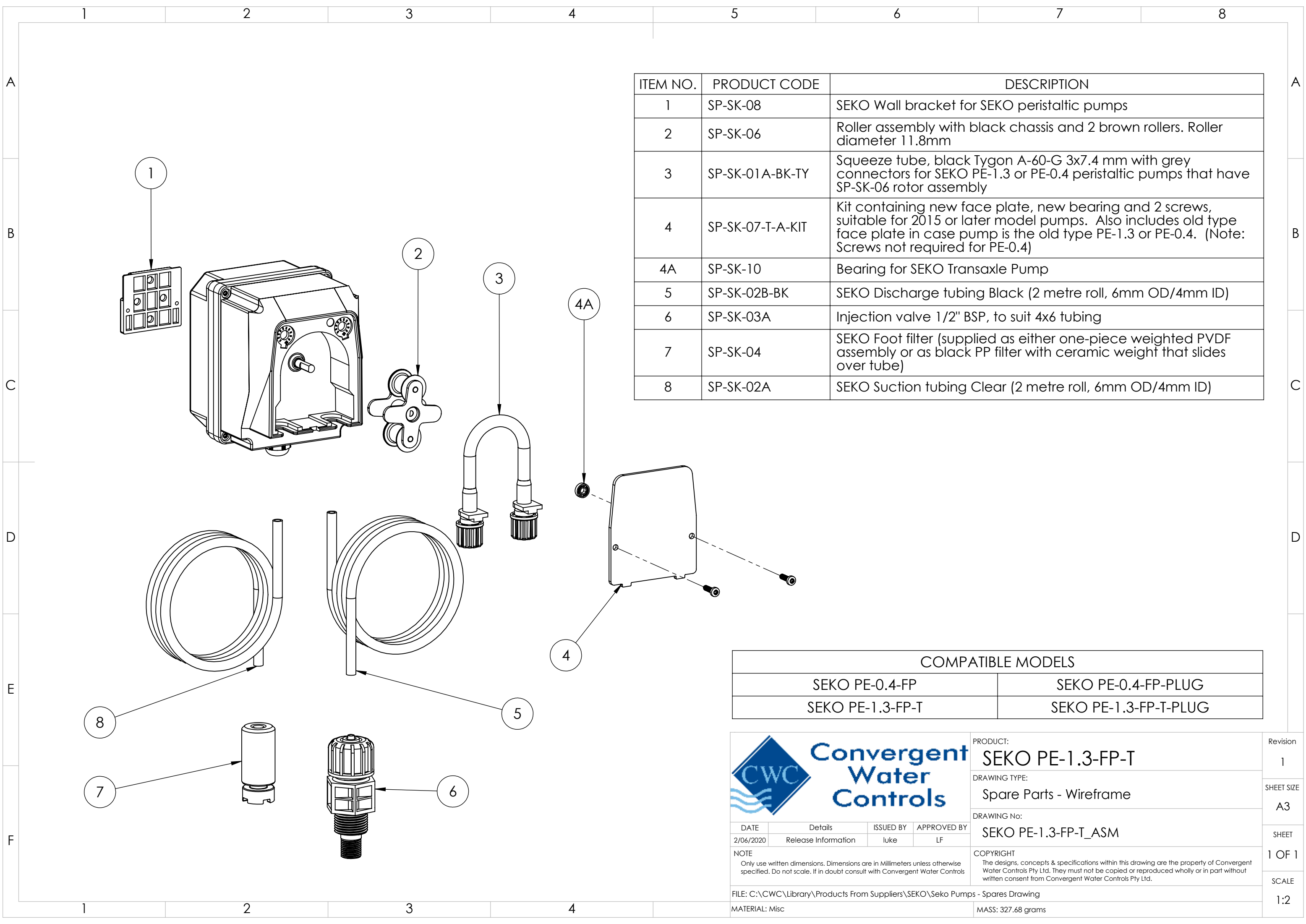


ITEM NO.	PRODUCT CODE	DESCRIPTION
1	SP-SK-08	SEKO Wall bracket for SEKO peristaltic pumps
2	SP-SK-06	Roller assembly with black chassis and 2 brown rollers. Roller diameter 11.8mm
3	SP-SK-01A-BK-TY	Squeeze tube, black Tygon A-60-G 3x7.4 mm with grey connectors for SEKO PE-1.3 or PE-0.4 peristaltic pumps that have SP-SK-06 rotor assembly
4	SP-SK-07-T-A-KIT	Kit containing new face plate, new bearing and 2 screws, suitable for 2015 or later model pumps. Also includes old type face plate in case pump is the old type PE-1.3 or PE-0.4. (Note: Screws not required for PE-0.4)
4A	SP-SK-10	Bearing for SEKO Transaxle Pump
5	SP-SK-02B-BK	SEKO Discharge tubing Black (2 metre roll, 6mm OD/4mm ID)
6	SP-SK-03A	Injection valve 1/2" BSP, to suit 4x6 tubing
7	SP-SK-04	SEKO Foot filter (supplied as either one-piece weighted PVDF assembly or as black PP filter with ceramic weight that slides over tube)
8	SP-SK-02A	SEKO Suction tubing Clear (2 metre roll, 6mm OD/4mm ID)

COMPATIBLE MODELS	
SEKO PE-0.4-FP	SEKO PE-0.4-FP-PLUG
SEKO PE-1.3-FP-T	SEKO PE-1.3-FP-T-PLUG

		PRODUCT:	SEKO PE-1.3-FP-T	Revision	1
		DRAWING TYPE:	Spare Parts	SHEET SIZE	A3
		DRAWING No:	SEKO PE-1.3-FP-T_ASM	SHEET	1 OF 1
		NOTE	COPYRIGHT The designs, concepts & specifications within this drawing are the property of Convergent Water Controls Pty Ltd. They must not be copied or reproduced wholly or in part without written consent from Convergent Water Controls Pty Ltd.		
		FILE: C:\CWC\Library\Products From Suppliers\SEKO\Seko Pumps - Spares Drawing			
		MATERIAL: Misc	MASS: 327.68 grams		
					SCALE 1:2



ITEM NO.	PRODUCT CODE	DESCRIPTION
1	SP-SK-08	SEKO Wall bracket for SEKO peristaltic pumps
2	SP-SK-06	Roller assembly with black chassis and 2 brown rollers. Roller diameter 11.8mm
3	SP-SK-01A-BK-TY	Squeeze tube, black Tygon A-60-G 3x7.4 mm with grey connectors for SEKO PE-1.3 or PE-0.4 peristaltic pumps that have SP-SK-06 rotor assembly
4	SP-SK-07-T-A-KIT	Kit containing new face plate, new bearing and 2 screws, suitable for 2015 or later model pumps. Also includes old type face plate in case pump is the old type PE-1.3 or PE-0.4. (Note: Screws not required for PE-0.4)
4A	SP-SK-10	Bearing for SEKO Transaxle Pump
5	SP-SK-02B-BK	SEKO Discharge tubing Black (2 metre roll, 6mm OD/4mm ID)
6	SP-SK-03A	Injection valve 1/2" BSP, to suit 4x6 tubing
7	SP-SK-04	SEKO Foot filter (supplied as either one-piece weighted PVDF assembly or as black PP filter with ceramic weight that slides over tube)
8	SP-SK-02A	SEKO Suction tubing Clear (2 metre roll, 6mm OD/4mm ID)

COMPATIBLE MODELS	
SEKO PE-0.4-FP	SEKO PE-0.4-FP-PLUG
SEKO PE-1.3-FP-T	SEKO PE-1.3-FP-T-PLUG

	PRODUCT: SEKO PE-1.3-FP-T	Revision 1
	DRAWING TYPE: Spare Parts - Wireframe	SHEET SIZE A3
	DRAWING No: SEKO PE-1.3-FP-T_ASM	SHEET 1 OF 1
	COPYRIGHT The designs, concepts & specifications within this drawing are the property of Convergent Water Controls Pty Ltd. They must not be copied or reproduced wholly or in part without written consent from Convergent Water Controls Pty Ltd.	SCALE 1:2
DATE: 2/06/2020 Details: Release Information ISSUED BY: luke APPROVED BY: LF		
NOTE Only use written dimensions. Dimensions are in Millimeters unless otherwise specified. Do not scale. If in doubt consult with Convergent Water Controls		
FILE: C:\CWC\Library\Products From Suppliers\SEKO\Seko Pumps - Spares Drawing		
MATERIAL: Misc		MASS: 327.68 grams