


ITEM NO.	PRODUCT CODE	DESCRIPTION
1	EMEC 073.1062.1	Injection valve 1/2". Includes tube connection kit and O-ring
2	EMEC 026.0150.0	O-ring Viton for 1/2" valve
3	EMEC 025.0138.1	Tube connection kit (1/2" Female thread, for 4x6 tube) Black
4	SP-SK-02B-BK	Delivery tubing Black (2 metre roll, 6mm OD/4mm ID)
5	EMEC 020.0987.1	Pump head PVDF. Includes Viton head O-ring, 3/8" Tube connection kits and Manual venting valve. Suits 4x6 Tubing
6	EMEC 026.0042.0	O-ring Viton for 3/8" valve
7	EMEC 026.0009.0	Head O-ring Viton
8	EMEC 025.0894.1	Manual venting valve
9	EMEC 018.0001.0	Teflon diaphragm
10	EMEC 025.0038.1	Tube connection kit (3/8" Female thread for 4x6 tube) Black
11	SP-SK-02A	Suction tubing Transparent (2 metre roll, 6mm OD/4mm ID)
12	EMEC 076.0147.1	Foot valve with weight/filter, includes reed switch, tube connection kit and O-ring
13	EMEC 076.0149.1	Replacement PVDF Reed switch with cable and BNC for foot valve
14	EMEC 033.0040.0	Weight/Strainer for foot valve PVDF
15	EMEC 075.0017.1	Level float for foot valve PVDF
16	EMEC 038.0589.0	PVDF Clip for float to rest on in foot valve
17	EMEC 010.0504.1	Replacement Solenoid for VMF 15 02 FP
17A	EMEC 010.0539.1	Replacement Solenoid for VMF 07 06 FP
17B	EMEC 010.0441.1	Replacement Solenoid for VMF 03 10 FP
	EMEC 002.2310.1T	Replacement circuit board for VMF
	EMEC 002.3209.1T	Replacement circuit board for VMSP0
	EMEC 110.0625.1	Maintenance/Service kit. Includes complete pump head and O-ring, Injection valve and Foot valve (without weighted filter)

COMPATIBLE MODELS	
EMEC VMF 15 02 FP	EMEC VMF 07 06 FP
EMEC VMF 03 10 FP	EMEC VMSP0 0706 FP



PRODUCT: EMEC VMF 15 02 FP

DRAWING TYPE: Spare Parts

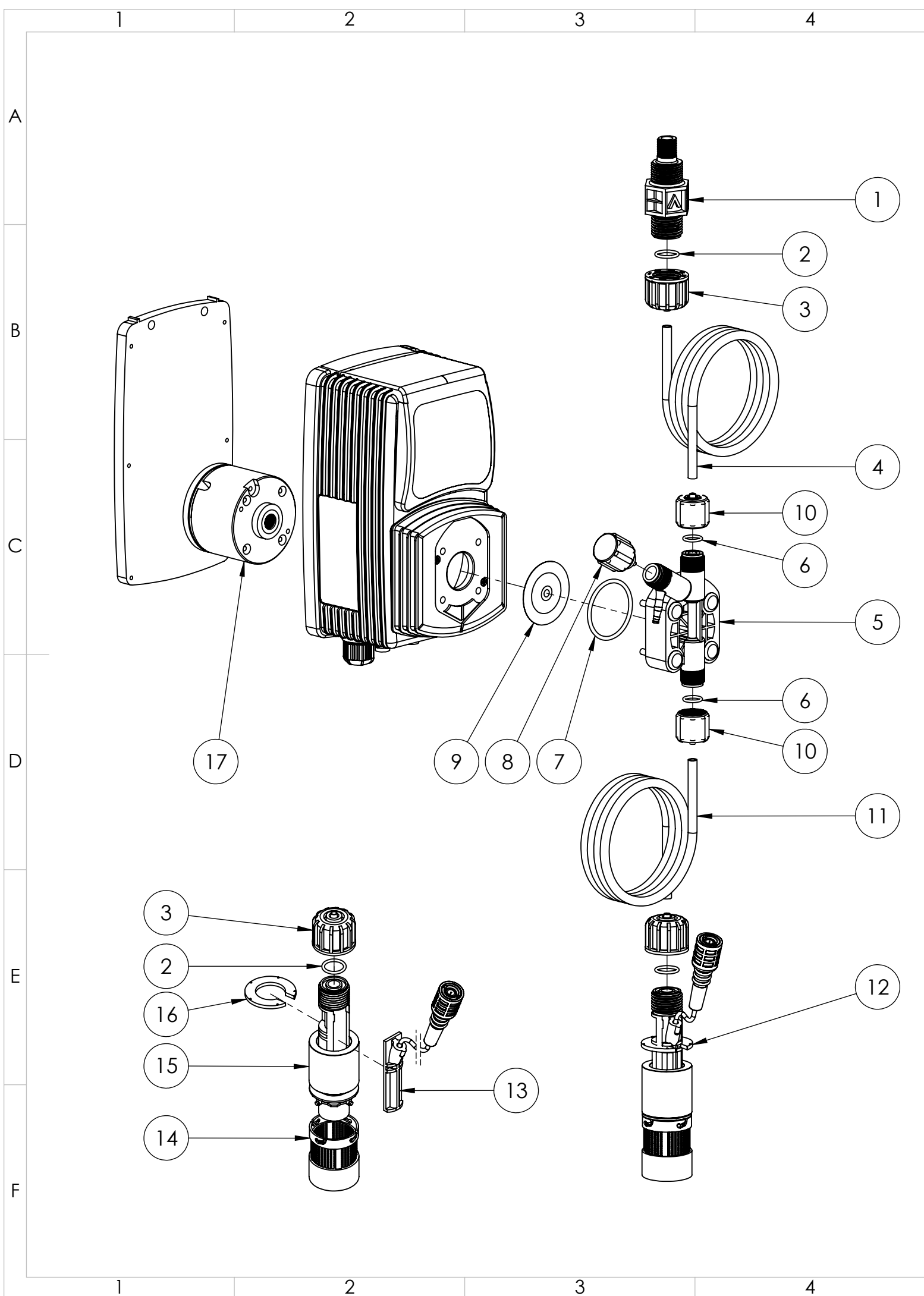
DRAWING No: EMEC VMF 15 02 FP_ASM

COPYRIGHT: The designs, concepts & specifications within this drawing are the property of Convergent Water Controls Pty Ltd. They must not be copied or reproduced wholly or in part without written consent from Convergent Water Controls Pty Ltd.

DATE	Details	ISSUED BY	APPROVED BY
9/09/2020	Release Information	LF	LN
NOTE: Only use written dimensions. Dimensions are in Millimeters unless otherwise specified. Do not scale. If in doubt consult with Convergent Water Controls			
FILE: C:\CWC\Library\Products From Suppliers\EMEC\Pumps\V-Series\EMEC V Series Pump			
MATERIAL: Misc			


Revision	1
SHEET SIZE	A3
SHEET	1 OF 1
SCALE	1:3

MASS: 1758.89 grams



ITEM NO.	PRODUCT CODE	DESCRIPTION
1	EMEC 073.1062.1	Injection valve 1/2". Includes tube connection kit and O-ring
2	EMEC 026.0150.0	O-ring Viton for 1/2" valve
3	EMEC 025.0138.1	Tube connection kit (1/2" Female thread, for 4x6 tube) Black
4	SP-SK-02B-BK	Delivery tubing Black (2 metre roll, 6mm OD/4mm ID)
5	EMEC 020.0987.1	Pump head PVDF. Includes Viton head O-ring, 3/8" Tube connection kits and Manual venting valve. Suits 4x6 Tubing
6	EMEC 026.0042.0	O-ring Viton for 3/8" valve
7	EMEC 026.0009.0	Head O-ring Viton
8	EMEC 025.0894.1	Manual venting valve
9	EMEC 018.0001.0	Teflon diaphragm
10	EMEC 025.0038.1	Tube connection kit (3/8" Female thread for 4x6 tube) Black
11	SP-SK-02A	Suction tubing Transparent (2 metre roll, 6mm OD/4mm ID)
12	EMEC 076.0147.1	Foot valve with weight/filter, includes reed switch, tube connection kit and O-ring
13	EMEC 076.0149.1	Replacement PVDF Reed switch with cable and BNC for foot valve
14	EMEC 033.0040.0	Weight/Strainer for foot valve PVDF
15	EMEC 075.0017.1	Level float for foot valve PVDF
16	EMEC 038.0589.0	PVDF Clip for float to rest on in foot valve
17	EMEC 010.0504.1	Replacement Solenoid for VMF 15 02 FP
17A	EMEC 010.0539.1	Replacement Solenoid for VMF 07 06 FP
17B	EMEC 010.0441.1	Replacement Solenoid for VMF 03 10 FP
	EMEC 002.2310.1T	Replacement circuit board for VMF
	EMEC 002.3209.1T	Replacement circuit board for VMSP0
	EMEC 110.0625.1	Maintenance/Service kit. Includes complete pump head and O-ring, Injection valve and Foot valve (without weighted filter)

COMPATIBLE MODELS	
EMEC VMF 15 02 FP	EMEC VMF 07 06 FP
EMEC VMF 03 10 FP	EMEC VMSP0 0706 FP

 <div>Convergent Water Controls</div>				PRODUCT: EMEC VMF 15 02 FP			
				DRAWING TYPE: Spare Parts - Wireframe			
				DRAWING No: EMEC VMF 15 02 FP_ASM			
DATE 9/09/2020		Details Release Information		ISSUED BY LF		APPROVED BY	
NOTE Only use written dimensions. Dimensions are in Millimeters unless otherwise specified. Do not scale. If in doubt consult with Convergent Water Controls				COPYRIGHT The designs, concepts & specifications within this drawing are the property of Convergent Water Controls Pty Ltd. They must not be copied or reproduced wholly or in part without written consent from Convergent Water Controls Pty Ltd.			
FILE: C:\CWC\Library\Products From Suppliers\EMEC\Pumps\V-Series\EMEC V Series Pump							
MATERIAL: Misc				MASS: 1758.89 grams			