

ITEM NO.	PRODUCT CODE	DESCRIPTION
1	EMEC 073.1062.1	Injection valve 1/2" 4x6 FP. Includes tube connection kit and O-ring
2	EMEC 026.0150.0	O-ring Viton for 1/2" valve
3	EMEC 025.0138.1	Tube connection kit (1/2" Female thread, for 4x6 tube) Black
4	SP-SK-02B-BK	Delivery or self-venting (de-gassing) tubing Black (2 metre roll, 6mm OD/4mm ID)
5	EMEC 020.1015.1	Self venting Pump head PVDF. Includes Viton Head O-ring and 3/8" Tube connection kits. Suits 4x6 Tubing
6	EMEC 026.0042.0	O-ring Viton for 3/8" valve
7	EMEC 026.0009.0	Head O-ring Viton
8	EMEC 018.0001.0	Teflon diaphragm
9	EMEC 025.0038.1	Tube connection kit (3/8" Female thread for 4x6 tube) Black
10	SP-SK-02A	Suction tubing Transparent (2 metre roll, 6mm OD/4mm ID)
11	EMEC 076.0147.1	Foot valve with weight/filter, includes reed switch, tube connection kit and O-ring
12	EMEC 076.0149.1	Replacement PVDF Reed switch with cable and BNC for foot valve
13	EMEC 033.0040.0	Weight/Strainer for foot valve PVDF
14	EMEC 075.0017.1	Level float for foot valve PVDF
15	EMEC 038.0589.0	PVDF Clip for float to rest on in foot valve
16	EMEC 010.0575.1	Replacement Solenoid for VAMF 10 02 FP
16A	EMEC 010.0539.1	Replacement Solenoid for VAMF 07 04 FP
16B	EMEC 010.0441.1	Replacement Solenoid for VAMF 03 07 FP
	EMEC 002.2310.1T	Replacement circuit board for VAMF
	EMEC 002.3209.1T	Replacement circuit board for VMSAPO
	EMEC 110.0627.1	Maintenance/Service kit. Includes complete pump head and O-ring, Injection valve and Foot valve (without weighted filter)

COMPATIBLE MODELS	
EMEC VAMF 10 02 FP	EMEC VAMF 07 04 FP
EMEC VAMF 03 07 FP	EMEC VMSAPO 07 04 FP



DATE	Details	ISSUED BY	APPROVED BY
9/09/2020	Release Information	LF	LN

NOTE
Only use written dimensions. Dimensions are in Millimeters unless otherwise specified. Do not scale. If in doubt consult with Convergent Water Controls

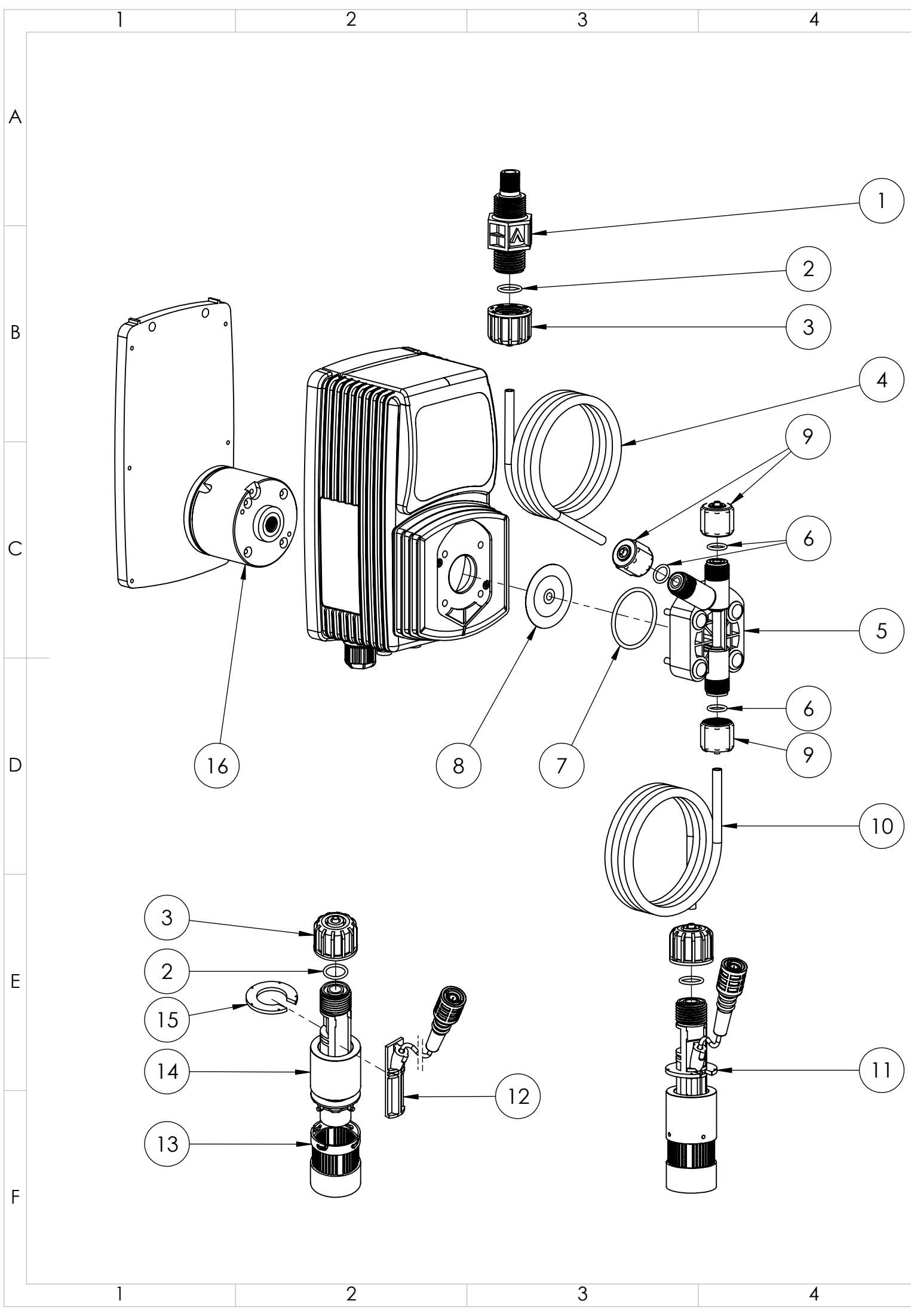
FILE: C:\CWC\Library\Products From Suppliers\EMEC\Pumps\V-Series\EMEC V Series Pump

MATERIAL: Misc

PRODUCT:	EMEC VAMF 10 02 FP
DRAWING TYPE:	Spare Parts
DRAWING No:	EMEC VAMF 10 02 FP_ASM
COPYRIGHT	The designs, concepts & specifications within this drawing are the property of Convergent Water Controls Pty Ltd. They must not be copied or reproduced wholly or in part without written consent from Convergent Water Controls Pty Ltd.

MASS: 1763.62 grams

Revision	1
SHEET SIZE	A3
SHEET	1 OF 1
SCALE	1:3



ITEM NO.	PRODUCT CODE	DESCRIPTION
1	EMEC 073.1062.1	Injection valve 1/2" 4x6 FP. Includes tube connection kit and O-ring
2	EMEC 026.0150.0	O-ring Viton for 1/2" valve
3	EMEC 025.0138.1	Tube connection kit (1/2" Female thread, for 4x6 tube) Black
4	SP-SK-02B-BK	Delivery or self-venting (de-gassing) tubing Black (2 metre roll, 6mm OD/4mm ID)
5	EMEC 020.1015.1	Self venting Pump head PVDF. Includes Viton Head O-ring and 3/8" Tube connection kits. Suits 4x6 Tubing
6	EMEC 026.0042.0	O-ring Viton for 3/8" valve
7	EMEC 026.0009.0	Head O-ring Viton
8	EMEC 018.0001.0	Teflon diaphragm
9	EMEC 025.0038.1	Tube connection kit (3/8" Female thread for 4x6 tube) Black
10	SP-SK-02A	Suction tubing Transparent (2 metre roll, 6mm OD/4mm ID)
11	EMEC 076.0147.1	Foot valve with weight/filter, includes reed switch, tube connection kit and O-ring
12	EMEC 076.0149.1	Replacement PVDF Reed switch with cable and BNC for foot valve
13	EMEC 033.0040.0	Weight/Strainer for foot valve PVDF
14	EMEC 075.0017.1	Level float for foot valve PVDF
15	EMEC 038.0589.0	PVDF Clip for float to rest on in foot valve
16	EMEC 010.0575.1	Replacement Solenoid for VAMF 10 02 FP
16A	EMEC 010.0539.1	Replacement Solenoid for VAMF 07 04 FP
16B	EMEC 010.0441.1	Replacement Solenoid for VAMF 03 07 FP
	EMEC 002.2310.1T	Replacement circuit board for VAMF
	EMEC 002.3209.1T	Replacement circuit board for VMSAPO
	EMEC 110.0627.1	Maintenance/Service kit. Includes complete pump head and O-ring, Injection valve and Foot valve (without weighted filter)

COMPATIBLE MODELS	
EMEC VAMF 10 02 FP	EMEC VAMF 07 04 FP
EMEC VAMF 03 07 FP	EMEC VMSAPO 07 04 FP



DATE	Details	ISSUED BY	APPROVED BY
9/09/2020	Release Information	LF	LF

NOTE
Only use written dimensions. Dimensions are in Millimeters unless otherwise specified. Do not scale. If in doubt consult with Convergent Water Controls

FILE: C:\CWC\Library\Products From Suppliers\EMEC\Pumps\V-Series\EMEC V Series Pump

MATERIAL: Misc

PRODUCT:	EMEC VAMF 10 02 FP	Revision	1
DRAWING TYPE:	Spare Parts - Wireframe	SHEET SIZE	A3
DRAWING No:	EMEC VAMF 10 02 FP_ASM	SHEET	1 OF 1
COPYRIGHT	The designs, concepts & specifications within this drawing are the property of Convergent Water Controls Pty Ltd. They must not be copied or reproduced wholly or in part without written consent from Convergent Water Controls Pty Ltd.	SCALE	1:3