
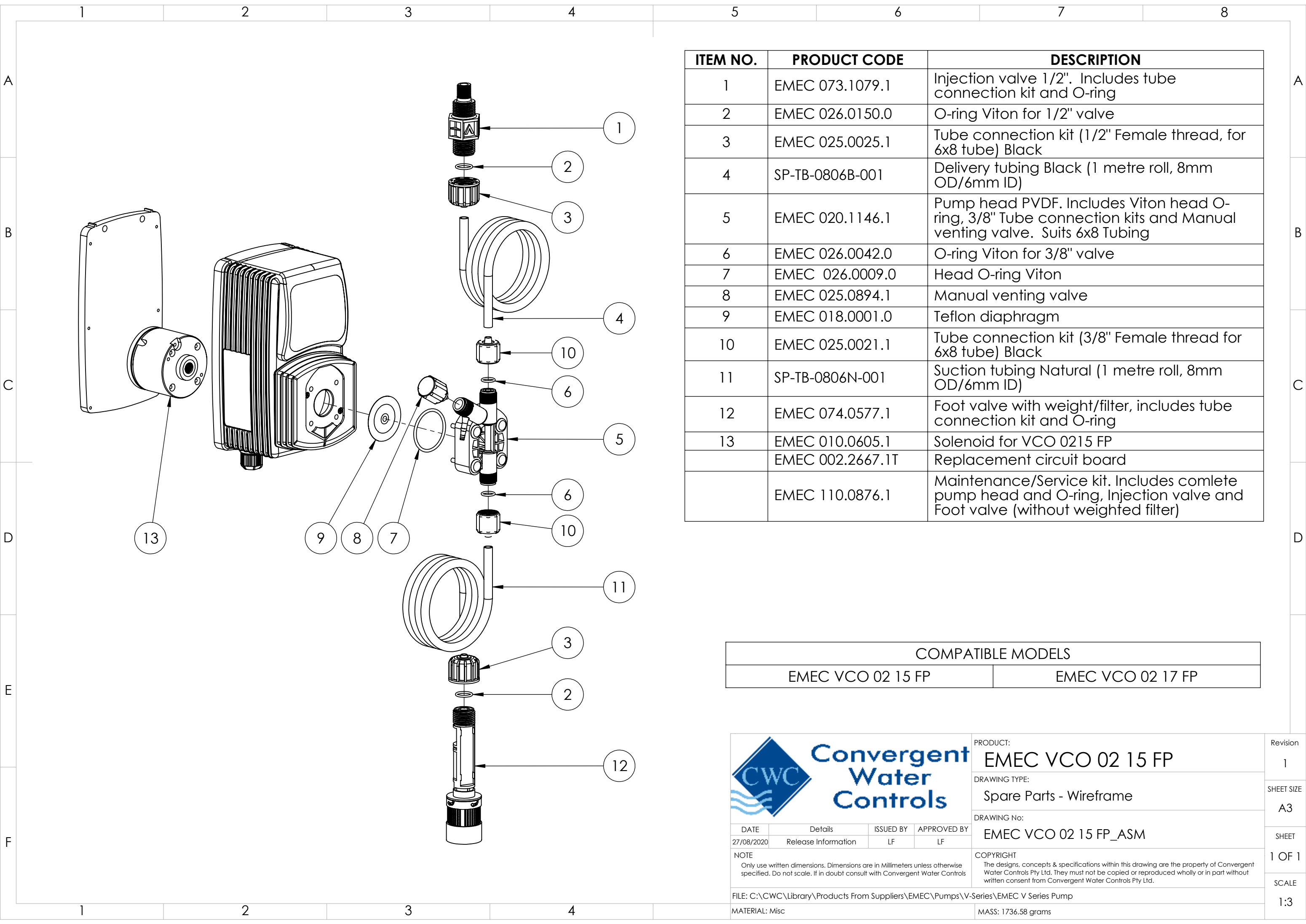


ITEM NO.	PRODUCT CODE	DESCRIPTION
1	EMEC 073.1079.1	Injection valve 1/2". Includes tube connection kit and O-ring
2	EMEC 026.0150.0	O-ring Viton for 1/2" valve
3	EMEC 025.0025.1	Tube connection kit (1/2" Female thread, for 6x8 tube) Black
4	SP-TB-0806B-001	Delivery tubing Black (1 metre roll, 8mm OD/6mm ID)
5	EMEC 020.1146.1	Pump head PVDF. Includes Viton head O-ring, 3/8" Tube connection kits and Manual venting valve. Suits 6x8 Tubing
6	EMEC 026.0042.0	O-ring Viton for 3/8" valve
7	EMEC 026.0009.0	Head O-ring Viton
8	EMEC 025.0894.1	Manual venting valve
9	EMEC 018.0001.0	Teflon diaphragm
10	EMEC 025.0021.1	Tube connection kit (3/8" Female thread for 6x8 tube) Black
11	SP-TB-0806N-001	Suction tubing Natural (1 metre roll, 8mm OD/6mm ID)
12	EMEC 074.0577.1	Foot valve with weight/filter, includes tube connection kit and O-ring
13	EMEC 010.0605.1	Solenoid for VCO 0215 FP
	EMEC 002.2667.1T	Replacement circuit board
	EMEC 110.0876.1	Maintenance/Service kit. Includes complete pump head and O-ring, Injection valve and Foot valve (without weighted filter)

COMPATIBLE MODELS	
EMEC VCO 02 15 FP	EMEC VCO 02 17 FP

<div></div> <div>Convergent Water Controls</div>				PRODUCT: EMEC VCO 02 15 FP		Revision 1
				DRAWING TYPE: Spare Parts		SHEET SIZE A3
				DRAWING No: EMEC VCO 02 15 FP_ASM		SHEET 1 OF 1
				COPYRIGHT The designs, concepts & specifications within this drawing are the property of Convergent Water Controls Pty Ltd. They must not be copied or reproduced wholly or in part without written consent from Convergent Water Controls Pty Ltd.		SCALE 1:3
DATE 27/08/2020	Details Release Information	ISSUED BY	APPROVED BY LF	FILE: C:\CWC\Library\Products From Suppliers\EMEC\Pumps\V-Series\EMEC V Series Pump		
NOTE Only use written dimensions. Dimensions are in Millimeters unless otherwise specified. Do not scale. If in doubt consult with Convergent Water Controls				MATERIAL: Misc		
				MASS: 1736.58 grams		



ITEM NO.	PRODUCT CODE	DESCRIPTION
1	EMEC 073.1079.1	Injection valve 1/2". Includes tube connection kit and O-ring
2	EMEC 026.0150.0	O-ring Viton for 1/2" valve
3	EMEC 025.0025.1	Tube connection kit (1/2" Female thread, for 6x8 tube) Black
4	SP-TB-0806B-001	Delivery tubing Black (1 metre roll, 8mm OD/6mm ID)
5	EMEC 020.1146.1	Pump head PVDF. Includes Viton head O-ring, 3/8" Tube connection kits and Manual venting valve. Suits 6x8 Tubing
6	EMEC 026.0042.0	O-ring Viton for 3/8" valve
7	EMEC 026.0009.0	Head O-ring Viton
8	EMEC 025.0894.1	Manual venting valve
9	EMEC 018.0001.0	Teflon diaphragm
10	EMEC 025.0021.1	Tube connection kit (3/8" Female thread for 6x8 tube) Black
11	SP-TB-0806N-001	Suction tubing Natural (1 metre roll, 8mm OD/6mm ID)
12	EMEC 074.0577.1	Foot valve with weight/filter, includes tube connection kit and O-ring
13	EMEC 010.0605.1	Solenoid for VCO 0215 FP
	EMEC 002.2667.1T	Replacement circuit board
	EMEC 110.0876.1	Maintenance/Service kit. Includes complete pump head and O-ring, Injection valve and Foot valve (without weighted filter)

COMPATIBLE MODELS	
EMEC VCO 02 15 FP	EMEC VCO 02 17 FP



DATE	Details	ISSUED BY	APPROVED BY
27/08/2020	Release Information	LF	LF

NOTE  
Only use written dimensions. Dimensions are in Millimeters unless otherwise specified. Do not scale. If in doubt consult with Convergent Water Controls

FILE: C:\CWC\Library\Products From Suppliers\EMEC\Pumps\V-Series\EMEC V Series Pump

MATERIAL: Misc

PRODUCT:	EMEC VCO 02 15 FP
DRAWING TYPE:	Spare Parts - Wireframe
DRAWING No:	EMEC VCO 02 15 FP_ASM
COPYRIGHT	The designs, concepts & specifications within this drawing are the property of Convergent Water Controls Pty Ltd. They must not be copied or reproduced wholly or in part without written consent from Convergent Water Controls Pty Ltd.

Revision	1
SHEET SIZE	A3
SHEET	1 OF 1
SCALE	1:3