
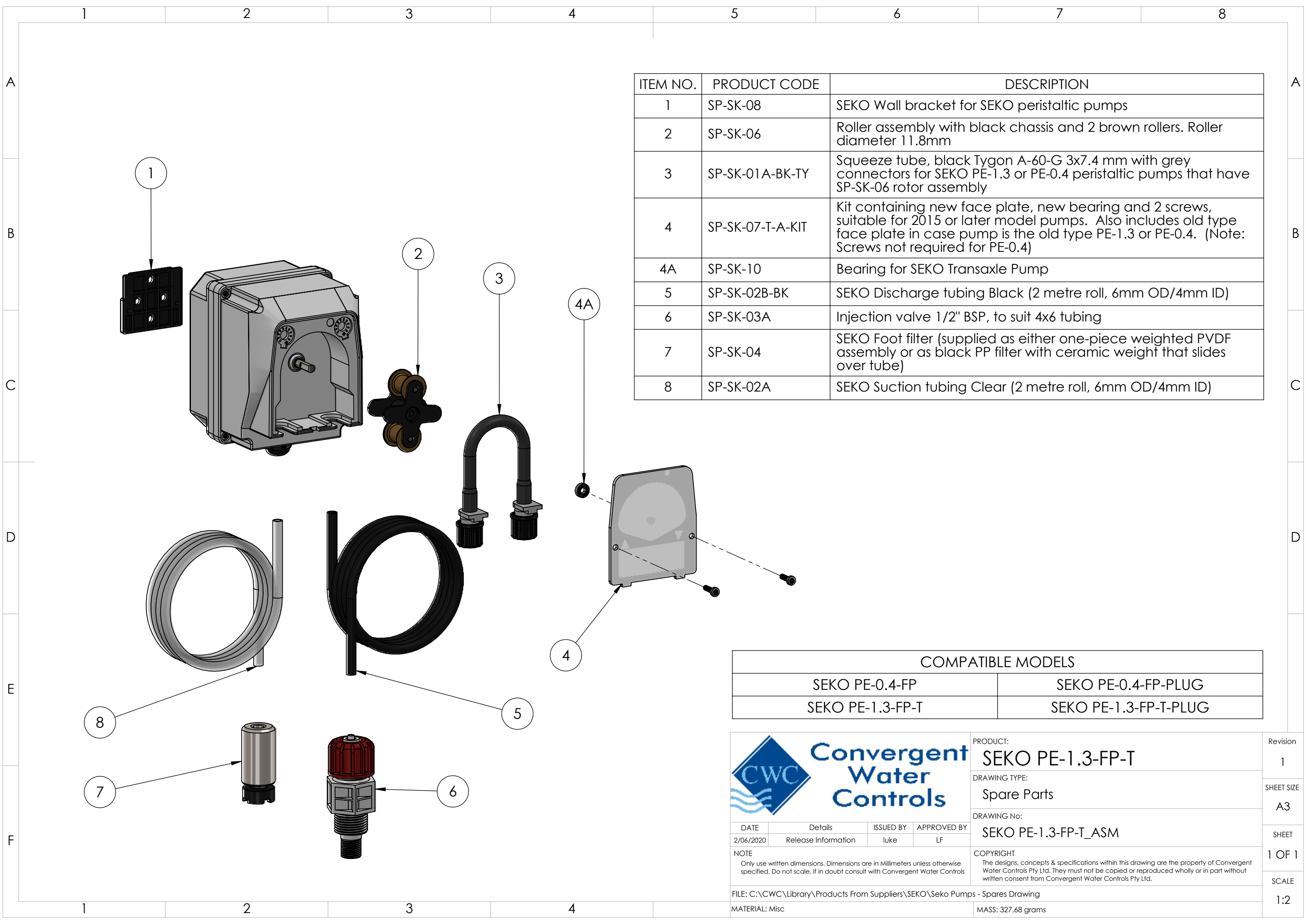


ITEM NO.	PRODUCT CODE	DESCRIPTION
1	NE-AG-5060-S	Enclosure 600x500x180mm Grey Lid hinged. Note: does not normally come pre drilled, please specify if you require drilled for a Digichem Plus+ system
2	SP-PCB-DIGI-PLUS-M	DIGICHEM-PLUS Controller Motherboard only. (Does not include enclosure base to which circuit board is normally mounted. Does not include processor PCB which is fitted in lid of enclosure)
3	SP-PCB-DIGI-PLUS-P-L	DIGICHEM-PLUS Spare Processor Board, fitted to enclosure lid, ready to plug into motherboard and screw down onto enclosure base
3A	SP-PCB-DIGI-PLUS-P	DIGICHEM Plus+ Spare Processor Board (Processor board only, to be fitted inside Optional enclosure lid)
4	SP-SK-PE-1.3-G-PLUG	Replacement SEKO PE-1.3 pump, supplied without any accessories, with 1.8m mains lead & moulded plug. For more detailed drawing of individual pump parts see SEKO PE-1.3-FP-T Spares Drawing
5	MAN DIGI-PLUS-C-1/2	DP+ Manifold on PVC backboard Inlet to Outlet: Ball valve, port for optional TDS probe, 2 x 1/2" Ports for optional pH & ORP Probes, sample point, 3/4" Port for optional Ground probe, Bleed valve, check valve, 3 ports for optional injection valves. For more detailed drawing of individual manifold parts see MAN DIGI-PLUS-C-1/2 Spares Drawing
6	SP-DCON-PB10AT-PL	TDS probe lead to suit TDS Probe SP-DCON-PB10AT-P or DCON-PB10AT-P, 1.5m long (Includes IP68 connector fitted to lead)
6A	SP-DCON-P10AT-PL	Old Style TDS probe lead to suit TDS Probe SP-DCON-P10AT-P or DCON-P10AT-P, 1.5m long (Includes old style metal connector fitted to lead)

COMPATIBLE MODELS		
DP-CA-RXP-CAB	DP-CA-RXPP-CAB	DP-DCAPH-RXP-X/6S-CAB
DP-CAPHP-RXP-CAB	DP-CAPH-RXPP-CAB	

<div></div> <div>Convergent Water Controls</div>				PRODUCT: DP-CAPHP-RXP-CAB		Revision 1	
				DRAWING TYPE: Spare Parts		SHEET SIZE A3	
				DRAWING No: DP-CAPHP-RXP-CAB_ASM		SHEET 1 OF 1	
				COPYRIGHT The designs, concepts & specifications within this drawing are the property of Convergent Water Controls Pty Ltd. They must not be copied or reproduced wholly or in part without written consent from Convergent Water Controls Pty Ltd.		SCALE 1:5	
DATE 11/05/2020		Details Release Information		ISSUED BY LF		APPROVED BY LF	
NOTE Only use written dimensions. Dimensions are in Millimeters unless otherwise specified. Do not scale. If in doubt consult with Convergent Water Controls							
FILE: C:\CWC\Library\Manufactured Products\System\DIGI PLUS\DIGI PLUS -CAB Systems							
MATERIAL: Misc				MASS: 19929.94 grams			



ITEM NO.	PRODUCT CODE	DESCRIPTION
1	SP-SK-08	SEKO Wall bracket for SEKO peristaltic pumps
2	SP-SK-06	Roller assembly with black chassis and 2 brown rollers. Roller diameter 11.8mm
3	SP-SK-01A-BK-TY	Squeeze tube, black Tygon A-60-G 3x7.4 mm with grey connectors for SEKO PE-1.3 or PE-0.4 peristaltic pumps that have SP-SK-06 rotor assembly
4	SP-SK-07-T-A-KIT	Kit containing new face plate, new bearing and 2 screws, suitable for 2015 or later model pumps. Also includes old type face plate in case pump is the old type PE-1.3 or PE-0.4. (Note: Screws not required for PE-0.4)
4A	SP-SK-10	Bearing for SEKO Transaxle Pump
5	SP-SK-02B-BK	SEKO Discharge tubing Black (2 metre roll, 6mm OD/4mm ID)
6	SP-SK-03A	Injection valve 1/2" BSP, to suit 4x6 tubing
7	SP-SK-04	SEKO Foot filter (supplied as either one-piece weighted PVDF assembly or as black PP filter with ceramic weight that slides over tube)
8	SP-SK-02A	SEKO Suction tubing Clear (2 metre roll, 6mm OD/4mm ID)

COMPATIBLE MODELS	
SEKO PE-0.4-FP	SEKO PE-0.4-FP-PLUG
SEKO PE-1.3-FP-T	SEKO PE-1.3-FP-T-PLUG



PRODUCT:
SEKO PE-1.3-FP-T

DRAWING TYPE:
Spare Parts

DRAWING No:
SEKO PE-1.3-FP-T_ASM

COPYRIGHT
The designs, concepts & specifications within this drawing are the property of Convergent Water Controls Pty Ltd. They must not be copied or reproduced wholly or in part without written consent from Convergent Water Controls Pty Ltd.

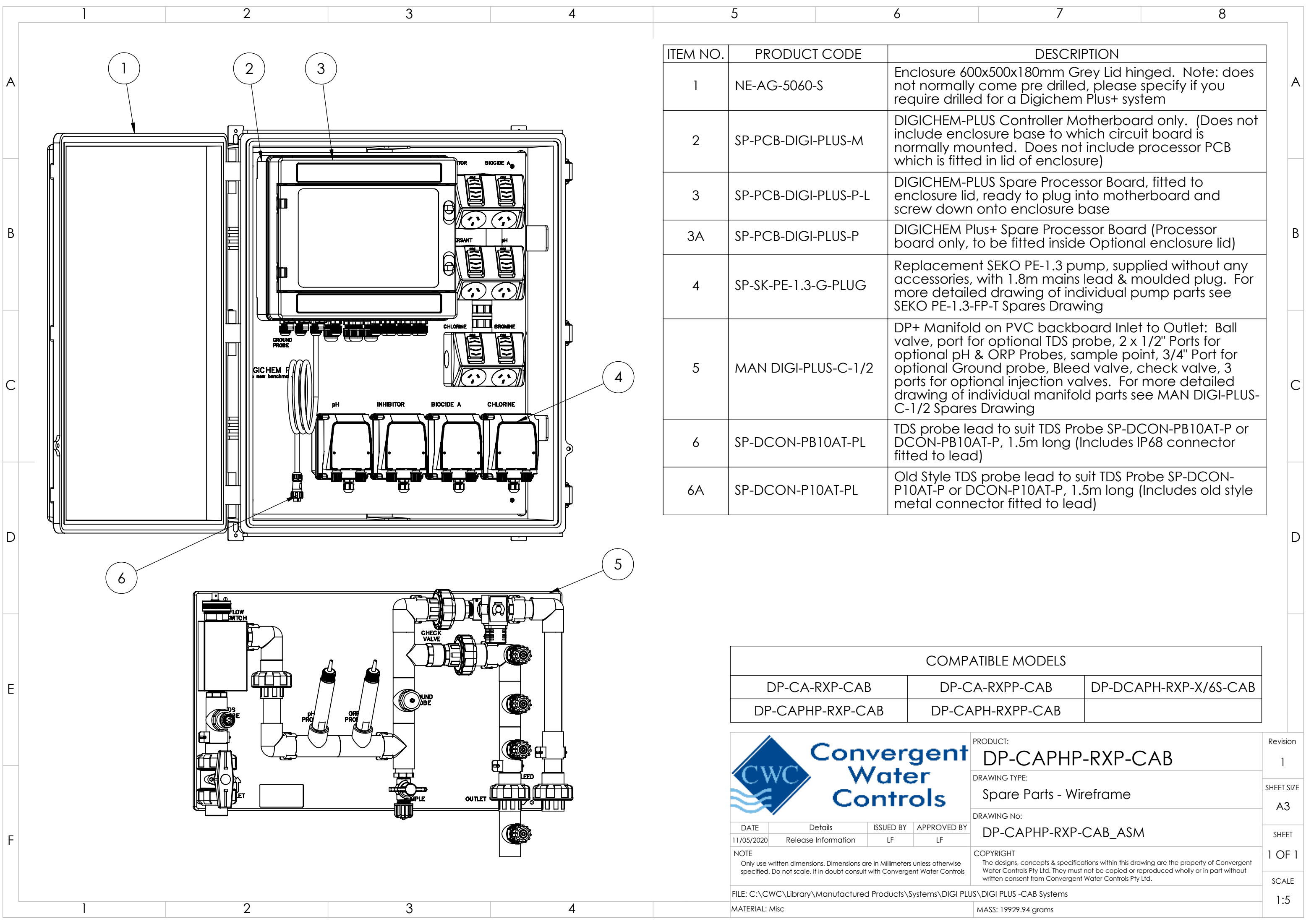
DATE	Details	ISSUED BY	APPROVED BY
2/06/2020	Release Information	luke	LF
NOTE Only use written dimensions. Dimensions are in Millimeters unless otherwise specified. If in doubt consult with Convergent Water Controls			
FILE: C:\CWC\Library\Products From Suppliers\SEKO\Seko Pumps - Spares Drawing			
MATERIAL: Misc		MASS: 327.68 grams	

Revision
1

SHEET SIZE
A3


SHEET
1 OF 1

SCALE
1:2



ITEM NO.	PRODUCT CODE	DESCRIPTION
1	NE-AG-5060-S	Enclosure 600x500x180mm Grey Lid hinged. Note: does not normally come pre drilled, please specify if you require drilled for a Digichem Plus+ system
2	SP-PCB-DIGI-PLUS-M	DIGICHEM-PLUS Controller Motherboard only. (Does not include enclosure base to which circuit board is normally mounted. Does not include processor PCB which is fitted in lid of enclosure)
3	SP-PCB-DIGI-PLUS-P-L	DIGICHEM-PLUS Spare Processor Board, fitted to enclosure lid, ready to plug into motherboard and screw down onto enclosure base
3A	SP-PCB-DIGI-PLUS-P	DIGICHEM Plus+ Spare Processor Board (Processor board only, to be fitted inside Optional enclosure lid)
4	SP-SK-PE-1.3-G-PLUG	Replacement SEKO PE-1.3 pump, supplied without any accessories, with 1.8m mains lead & moulded plug. For more detailed drawing of individual pump parts see SEKO PE-1.3-FP-T Spares Drawing
5	MAN DIGI-PLUS-C-1/2	DP+ Manifold on PVC backboard Inlet to Outlet: Ball valve, port for optional TDS probe, 2 x 1/2" Ports for optional pH & ORP Probes, sample point, 3/4" Port for optional Ground probe, Bleed valve, check valve, 3 ports for optional injection valves. For more detailed drawing of individual manifold parts see MAN DIGI-PLUS-C-1/2 Spares Drawing
6	SP-DCON-PB10AT-PL	TDS probe lead to suit TDS Probe SP-DCON-PB10AT-P or DCON-PB10AT-P, 1.5m long (Includes IP68 connector fitted to lead)
6A	SP-DCON-P10AT-PL	Old Style TDS probe lead to suit TDS Probe SP-DCON-P10AT-P or DCON-P10AT-P, 1.5m long (Includes old style metal connector fitted to lead)

COMPATIBLE MODELS		
DP-CA-RXP-CAB	DP-CA-RXPP-CAB	DP-DCAPH-RXP-X/6S-CAB
DP-CAPHP-RXP-CAB	DP-CAPH-RXPP-CAB	



PRODUCT:
DP-CAPHP-RXP-CAB

DRAWING TYPE:
Spare Parts - Wireframe

DRAWING No:
DP-CAPHP-RXP-CAB_ASM

COPYRIGHT
The designs, concepts & specifications within this drawing are the property of Convergent Water Controls Pty Ltd. They must not be copied or reproduced wholly or in part without written consent from Convergent Water Controls Pty Ltd.

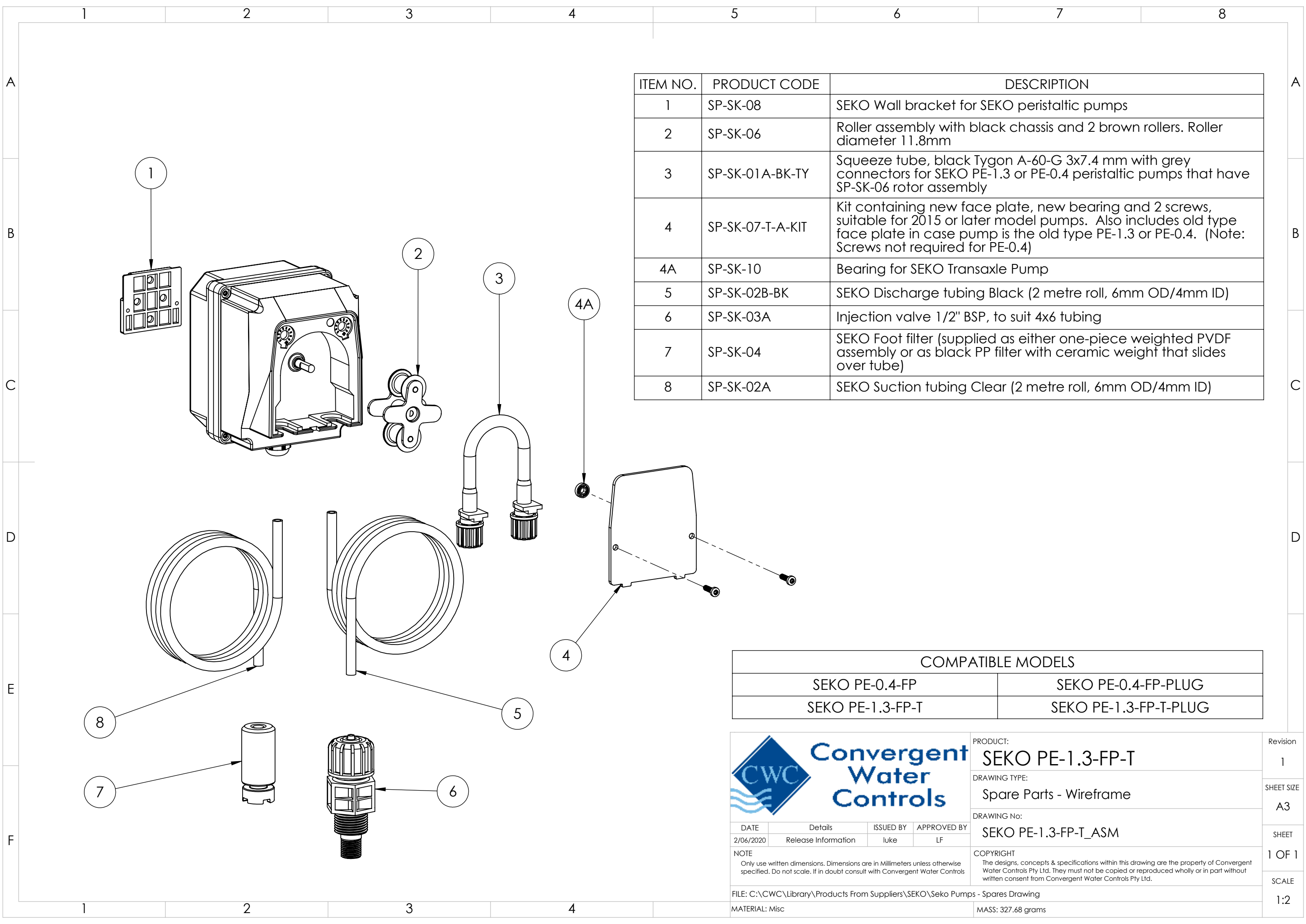
DATE 11/05/2020	Details Release Information	ISSUED BY LF	APPROVED BY LF
NOTE Only use written dimensions. Dimensions are in Millimeters unless otherwise specified. Do not scale. If in doubt consult with Convergent Water Controls			
FILE: C:\CWC\Library\Manufactured Products\System\DIGI PLUS\DIGI PLUS -CAB Systems			
MATERIAL: Misc			

Revision
1

SHEET SIZE
A3

SHEET
1 OF 1

SCALE
1:5



ITEM NO.	PRODUCT CODE	DESCRIPTION
1	SP-SK-08	SEKO Wall bracket for SEKO peristaltic pumps
2	SP-SK-06	Roller assembly with black chassis and 2 brown rollers. Roller diameter 11.8mm
3	SP-SK-01A-BK-TY	Squeeze tube, black Tygon A-60-G 3x7.4 mm with grey connectors for SEKO PE-1.3 or PE-0.4 peristaltic pumps that have SP-SK-06 rotor assembly
4	SP-SK-07-T-A-KIT	Kit containing new face plate, new bearing and 2 screws, suitable for 2015 or later model pumps. Also includes old type face plate in case pump is the old type PE-1.3 or PE-0.4. (Note: Screws not required for PE-0.4)
4A	SP-SK-10	Bearing for SEKO Transaxle Pump
5	SP-SK-02B-BK	SEKO Discharge tubing Black (2 metre roll, 6mm OD/4mm ID)
6	SP-SK-03A	Injection valve 1/2" BSP, to suit 4x6 tubing
7	SP-SK-04	SEKO Foot filter (supplied as either one-piece weighted PVDF assembly or as black PP filter with ceramic weight that slides over tube)
8	SP-SK-02A	SEKO Suction tubing Clear (2 metre roll, 6mm OD/4mm ID)

COMPATIBLE MODELS	
SEKO PE-0.4-FP	SEKO PE-0.4-FP-PLUG
SEKO PE-1.3-FP-T	SEKO PE-1.3-FP-T-PLUG

		PRODUCT:	SEKO PE-1.3-FP-T	Revision	1
		DRAWING TYPE:	Spare Parts - Wireframe	SHEET SIZE	A3
		DRAWING No:	SEKO PE-1.3-FP-T_ASM	SHEET	1 OF 1
DATE		Details	ISSUED BY	APPROVED BY	SCALE
2/06/2020		Release Information	luke	LF	1:2
NOTE		COPYRIGHT			
Only use written dimensions. Dimensions are in Millimeters unless otherwise specified. Do not scale. If in doubt consult with Convergent Water Controls		The designs, concepts & specifications within this drawing are the property of Convergent Water Controls Pty Ltd. They must not be copied or reproduced wholly or in part without written consent from Convergent Water Controls Pty Ltd.			
FILE: C:\CWC\Library\Products From Suppliers\SEKO\Seko Pumps - Spares Drawing					
MATERIAL: Misc		MASS: 327.68 grams			