
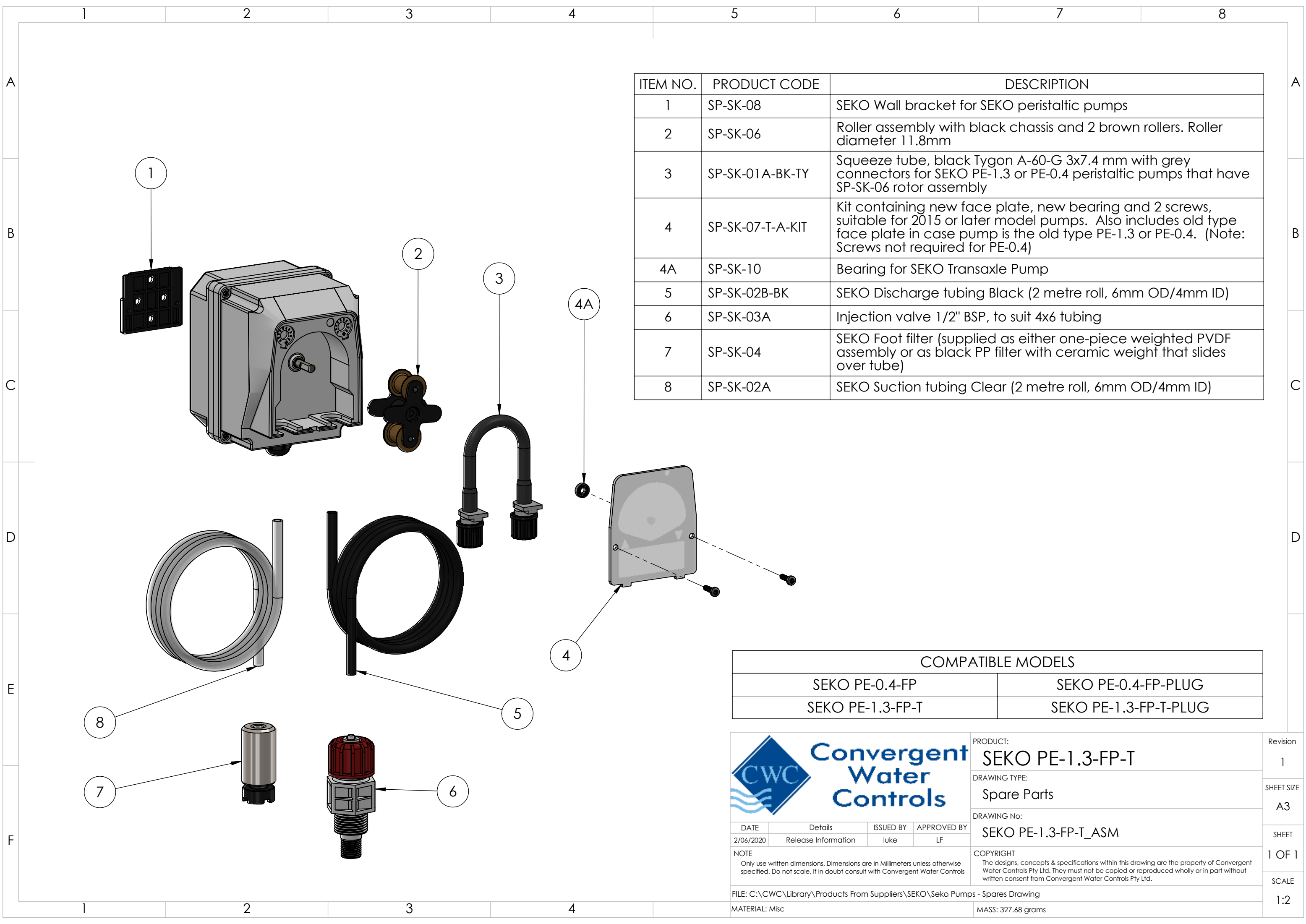


| ITEM NO. | PRODUCT CODE | DESCRIPTION |
|----------|----------------------|---|
| 1 | NE-AG-5060-S | Enclosure 600x500x180mm Grey Lid hinged. Note: does not normally come pre drilled, please specify if you require drilled for a Digichem Plus+ system |
| 2 | SP-PCB-DIGI-PLUS-M | DIGICHEM-PLUS Controller Motherboard only. (Does not include enclosure base to which circuit board is normally mounted. Does not include processor PCB which is fitted in lid of enclosure) |
| 3 | SP-PCB-DIGI-PLUS-P-L | DIGICHEM-PLUS Spare Processor Board, fitted to enclosure lid, ready to plug into motherboard and screw down onto enclosure base |
| 3A | SP-PCB-DIGI-PLUS-P | DIGICHEM Plus+ Spare Processor Board (Processor board only, to be fitted inside Optional enclosure lid) |
| 4 | SP-SK-PE-1.3-G-PLUG | Replacement SEKO PE-1.3 pump, supplied without any accessories, with 1.8m mains lead & moulded plug. For more detailed drawing of individual pump parts see SEKO PE-1.3-FP-T Spares Drawing |
| 5 | MAN-DIGI-PLUS-B-1/2 | DP+ Manifold on PVC backboard Inlet to Outlet: Ball valve, port for opt TDS probe, Flow Switch, 2x1/2" Ports for optional pH & ORP Probes, sample point, Bromine Solenoid valve, 3/4" Port for optional Ground probe, includes Bleed valve, check valve, 3 ports for optional injection valves. For more detailed drawing of individual manifold parts see MAN DIGI-PLUS-C-1/2 Spares Drawing |
| 6 | SP-DCON-PB10AT-PL | TDS probe lead to suit TDS Probe SP-DCON-PB10AT-P or DCON-PB10AT-P, 1.5m long (Includes IP68 connector fitted to lead) |
| 6A | SP-DCON-P10AT-PL | Old Style TDS probe lead to suit TDS Probe SP-DCON-P10AT-P or DCON-P10AT-P, 1.5m long (Includes old style metal connector fitted to lead) |

| COMPATIBLE MODELS | | |
|-------------------|-----------------|-----------------------|
| DP-CA-RXB-CAB | DP-CAPH-RXB-CAB | DP-DCAPH-RXB-X/4S-CAB |

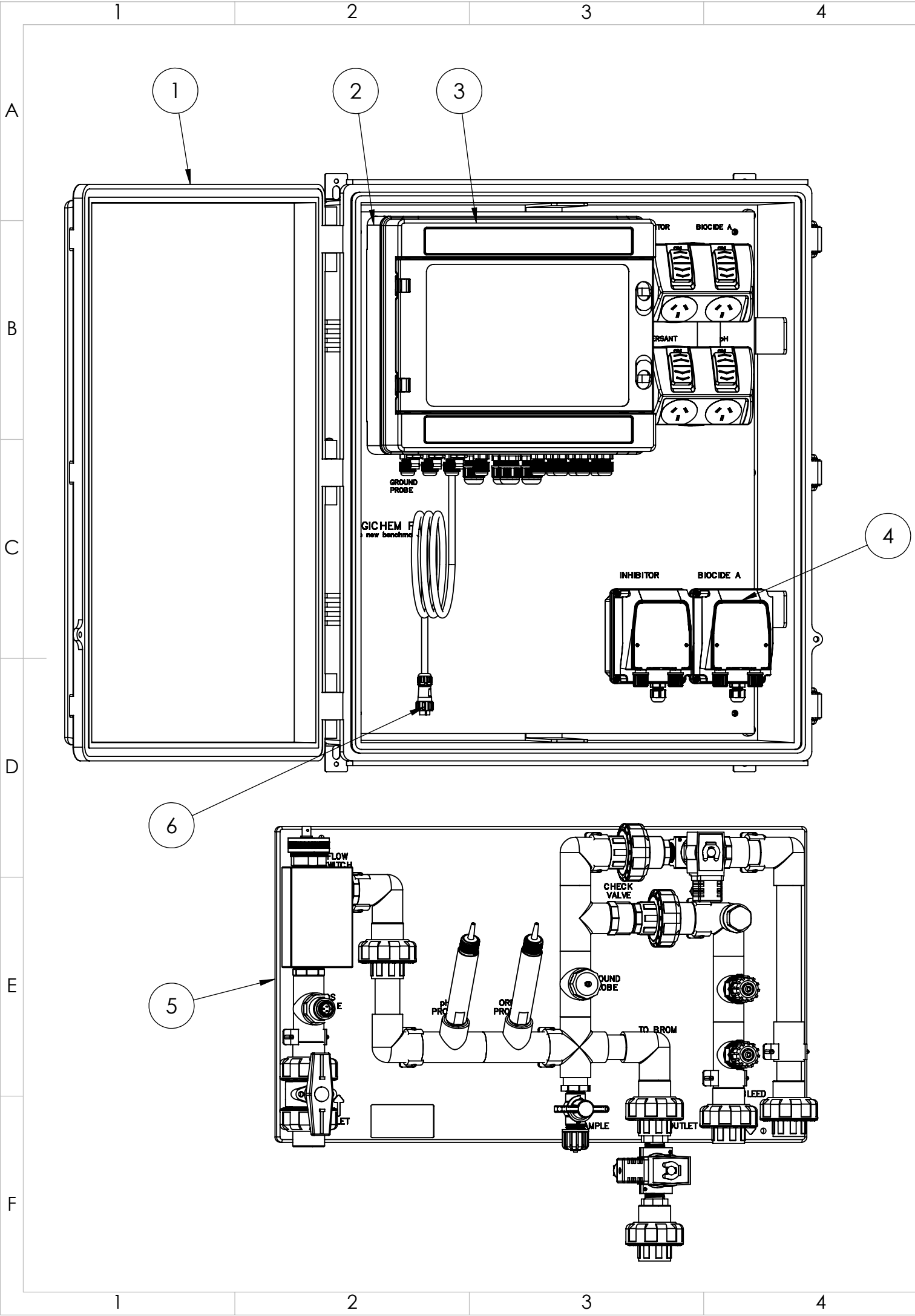
| | | | | | |
|---|---------------------|-----------|-------------|--|--|
| <div></div> <div>Convergent Water Controls</div> | | | | PRODUCT: DP-CAPH-RXB-CAB | |
| | | | | DRAWING TYPE: Spare Parts | |
| | | | | DRAWING No: DP-CAPH-RXB-CAB_ASM | |
| DATE | Details | ISSUED BY | APPROVED BY | COPYRIGHT The designs, concepts & specifications within this drawing are the property of Convergent Water Controls Pty Ltd. They must not be copied or reproduced wholly or in part without written consent from Convergent Water Controls Pty Ltd. | |
| 6/05/2020 | Release Information | LF | Admin | | |
| NOTE Only use written dimensions. Dimensions are in Millimeters unless otherwise specified. Do not scale. If in doubt consult with Convergent Water Controls | | | | | |
| FILE: C:\CWC\Library\Manufactured Products\System\DIGI PLUS\DIGI PLUS -CAB Systems | | | | | |
| MATERIAL: Misc | | | | MASS: 19163.24 grams | |



| ITEM NO. | PRODUCT CODE | DESCRIPTION |
|----------|------------------|--|
| 1 | SP-SK-08 | SEKO Wall bracket for SEKO peristaltic pumps |
| 2 | SP-SK-06 | Roller assembly with black chassis and 2 brown rollers. Roller diameter 11.8mm |
| 3 | SP-SK-01A-BK-TY | Squeeze tube, black Tygon A-60-G 3x7.4 mm with grey connectors for SEKO PE-1.3 or PE-0.4 peristaltic pumps that have SP-SK-06 rotor assembly |
| 4 | SP-SK-07-T-A-KIT | Kit containing new face plate, new bearing and 2 screws, suitable for 2015 or later model pumps. Also includes old type face plate in case pump is the old type PE-1.3 or PE-0.4. (Note: Screws not required for PE-0.4) |
| 4A | SP-SK-10 | Bearing for SEKO Transaxle Pump |
| 5 | SP-SK-02B-BK | SEKO Discharge tubing Black (2 metre roll, 6mm OD/4mm ID) |
| 6 | SP-SK-03A | Injection valve 1/2" BSP, to suit 4x6 tubing |
| 7 | SP-SK-04 | SEKO Foot filter (supplied as either one-piece weighted PVDF assembly or as black PP filter with ceramic weight that slides over tube) |
| 8 | SP-SK-02A | SEKO Suction tubing Clear (2 metre roll, 6mm OD/4mm ID) |


| COMPATIBLE MODELS | |
|-------------------|-----------------------|
| SEKO PE-0.4-FP | SEKO PE-0.4-FP-PLUG |
| SEKO PE-1.3-FP-T | SEKO PE-1.3-FP-T-PLUG |

| | | | | | |
|---|--|---|----------------------|-------------|--------|
|  | | PRODUCT: | SEKO PE-1.3-FP-T | Revision | 1 |
| | | DRAWING TYPE: | Spare Parts | SHEET SIZE | A3 |
| | | DRAWING No: | SEKO PE-1.3-FP-T_ASM | SHEET | 1 OF 1 |
| DATE | | Details | ISSUED BY | APPROVED BY | SCALE |
| 2/06/2020 | | Release Information | luke | LF | 1:2 |
| NOTE | | COPYRIGHT | | | |
| Only use written dimensions. Dimensions are in Millimeters unless otherwise specified. If in doubt consult with Convergent Water Controls | | The designs, concepts & specifications within this drawing are the property of Convergent Water Controls Pty Ltd. They must not be copied or reproduced wholly or in part without written consent from Convergent Water Controls Pty Ltd. | | | |
| FILE: C:\CWC\Library\Products From Suppliers\SEKO\Seko Pumps - Spares Drawing | | | | | |
| MATERIAL: Misc | | MASS: 327.68 grams | | | |



| ITEM NO. | PRODUCT CODE | DESCRIPTION |
|----------|----------------------|---|
| 1 | NE-AG-5060-S | Enclosure 600x500x180mm Grey Lid hinged. Note: does not normally come pre drilled, please specify if you require drilled for a Digichem Plus+ system |
| 2 | SP-PCB-DIGI-PLUS-M | DIGICHEM-PLUS Controller Motherboard only. (Does not include enclosure base to which circuit board is normally mounted. Does not include processor PCB which is fitted in lid of enclosure) |
| 3 | SP-PCB-DIGI-PLUS-P-L | DIGICHEM-PLUS Spare Processor Board, fitted to enclosure lid, ready to plug into motherboard and screw down onto enclosure base |
| 3A | SP-PCB-DIGI-PLUS-P | DIGICHEM Plus+ Spare Processor Board (Processor board only, to be fitted inside Optional enclosure lid) |
| 4 | SP-SK-PE-1.3-G-PLUG | Replacement SEKO PE-1.3 pump, supplied without any accessories, with 1.8m mains lead & moulded plug. For more detailed drawing of individual pump parts see SEKO PE-1.3-FP-T Spares Drawing |
| 5 | MAN-DIGI-PLUS-B-1/2 | DP+ Manifold on PVC backboard Inlet to Outlet: Ball valve, port for opt TDS probe, Flow Switch, 2x1/2" Ports for optional pH & ORP Probes, sample point, Bromine Solenoid valve, 3/4" Port for optional Ground probe, includes Bleed valve, check valve, 3 ports for optional injection valves. For more detailed drawing of individual manifold parts see MAN DIGI-PLUS-C-1/2 Spares Drawing |
| 6 | SP-DCON-PB10AT-PL | TDS probe lead to suit TDS Probe SP-DCON-PB10AT-P or DCON-PB10AT-P, 1.5m long (Includes IP68 connector fitted to lead) |
| 6A | SP-DCON-P10AT-PL | Old Style TDS probe lead to suit TDS Probe SP-DCON-P10AT-P or DCON-P10AT-P, 1.5m long (Includes old style metal connector fitted to lead) |

| COMPATIBLE MODELS | | |
|-------------------|-----------------|-----------------------|
| DP-CA-RXB-CAB | DP-CAPH-RXB-CAB | DP-DCAPH-RXB-X/4S-CAB |



PRODUCT:

DP-CAPH-RXB-CAB

DRAWING TYPE:

Spare Parts - Wireframe

DRAWING No:

DP-CAPH-RXB-CAB_ASM

COPYRIGHT

The designs, concepts & specifications within this drawing are the property of Convergent Water Controls Pty Ltd. They must not be copied or reproduced wholly or in part without written consent from Convergent Water Controls Pty Ltd.

| | | | |
|-----------|---------------------|-----------|-------------|
| DATE | Details | ISSUED BY | APPROVED BY |
| 6/05/2020 | Release Information | LF | Admin |

NOTE

Only use written dimensions. Dimensions are in Millimeters unless otherwise specified. Do not scale. If in doubt consult with Convergent Water Controls

Revision

1

SHEET SIZE

A3

SHEET

1 OF 1

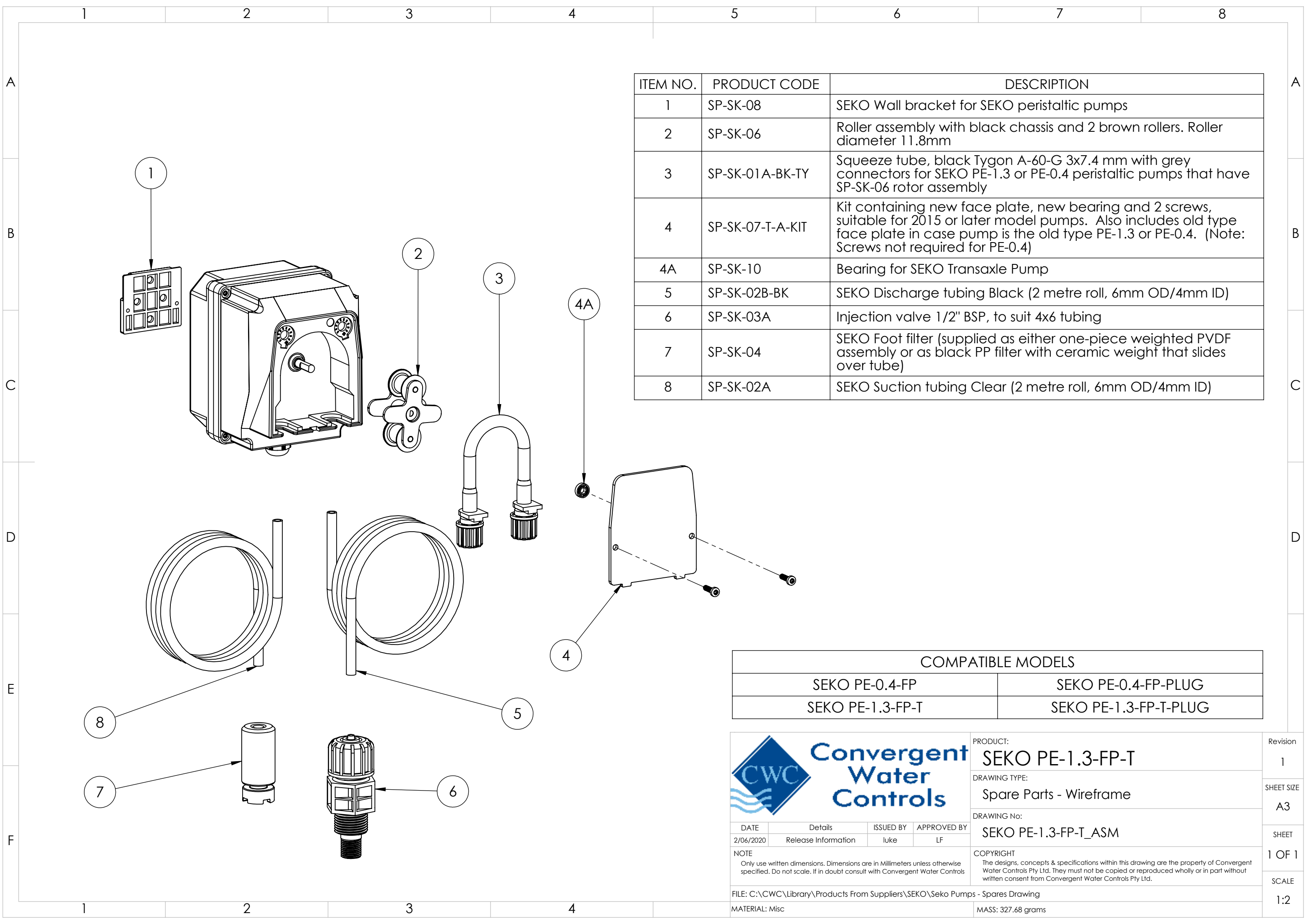
SCALE

1:5

FILE: C:\CWC\Library\Manufactured Products\System\DIGI PLUS\DIGI PLUS -CAB Systems


MATERIAL: Misc

MASS: 19163.24 grams



| ITEM NO. | PRODUCT CODE | DESCRIPTION |
|----------|------------------|--|
| 1 | SP-SK-08 | SEKO Wall bracket for SEKO peristaltic pumps |
| 2 | SP-SK-06 | Roller assembly with black chassis and 2 brown rollers. Roller diameter 11.8mm |
| 3 | SP-SK-01A-BK-TY | Squeeze tube, black Tygon A-60-G 3x7.4 mm with grey connectors for SEKO PE-1.3 or PE-0.4 peristaltic pumps that have SP-SK-06 rotor assembly |
| 4 | SP-SK-07-T-A-KIT | Kit containing new face plate, new bearing and 2 screws, suitable for 2015 or later model pumps. Also includes old type face plate in case pump is the old type PE-1.3 or PE-0.4. (Note: Screws not required for PE-0.4) |
| 4A | SP-SK-10 | Bearing for SEKO Transaxle Pump |
| 5 | SP-SK-02B-BK | SEKO Discharge tubing Black (2 metre roll, 6mm OD/4mm ID) |
| 6 | SP-SK-03A | Injection valve 1/2" BSP, to suit 4x6 tubing |
| 7 | SP-SK-04 | SEKO Foot filter (supplied as either one-piece weighted PVDF assembly or as black PP filter with ceramic weight that slides over tube) |
| 8 | SP-SK-02A | SEKO Suction tubing Clear (2 metre roll, 6mm OD/4mm ID) |

| COMPATIBLE MODELS | |
|-------------------|-----------------------|
| SEKO PE-0.4-FP | SEKO PE-0.4-FP-PLUG |
| SEKO PE-1.3-FP-T | SEKO PE-1.3-FP-T-PLUG |

| | | | | | |
|---|--|---|-------------------------|-------------|--------|
|  | | PRODUCT: | SEKO PE-1.3-FP-T | Revision | 1 |
| | | DRAWING TYPE: | Spare Parts - Wireframe | SHEET SIZE | A3 |
| | | DRAWING No: | SEKO PE-1.3-FP-T_ASM | SHEET | 1 OF 1 |
| DATE | | Details | ISSUED BY | APPROVED BY | SCALE |
| 2/06/2020 | | Release Information | luke | LF | 1:2 |
| NOTE | | COPYRIGHT | | | |
| Only use written dimensions. Dimensions are in Millimeters unless otherwise specified. Do not scale. If in doubt consult with Convergent Water Controls | | The designs, concepts & specifications within this drawing are the property of Convergent Water Controls Pty Ltd. They must not be copied or reproduced wholly or in part without written consent from Convergent Water Controls Pty Ltd. | | | |
| FILE: C:\CWC\Library\Products From Suppliers\SEKO\Seko Pumps - Spares Drawing | | | | | |
| MATERIAL: Misc | | MASS: 327.68 grams | | | |