

ITEM NO.	PRODUCT CODE	DESCRIPTION
1	NE-AG-5060-S	Enclosure 600x500x180mm Grey Lid hinged. Note: does not normally come pre drilled, please specify if you require drilled for a DIGICHEM-AB2-VB-CABG system
2	SP-SK-PE-1.3-G	Replacement SEKO PE-1.3 pump, supplied without any accessories. For more detailed drawing of individual pump parts see SEKO PE-1.3-FP-T Spares Drawing
3	SP-PCB-DIGI-XP2-M	DIGICHEM-XP2 Controller Replacement Motherboard only. (Does not include enclosure base to which circuit board is normally mounted. Does not include processor PCB which is fitted in lid of enclosure)
4	SP-PCB-DIGI-XP2-P-L	DIGICHEM-XP2 Replacement Processor Board, fitted to enclosure lid, ready to plug into motherboard and screw down onto enclosure base
4A	SP-PCB-DIGI-XP2-P	DIGICHEM-XP2 Spare Processor Board (Processor board only, to be fitted inside Optional enclosure lid)
5	SP-DCON-PB10AT-PL	1.5m TDS Probe Lead Only & IP68 Connector
5A	SP-DCON-P10AT-PL	Old Style TDS probe lead to suit TDS Probe SP-DCON-P10AT-P or DCON-P10AT-P, 1.5m long (Includes old style metal connector fitted to lead)
6	SP-PC-1	VUL 1" Low Dens PIPE CLIP
7	SP-M-AB2-VB-CABG	Manifold for Digichem system with Belimo valve - Includes Plastic PVC check valve and sample valve. Supplied without probe, actuated ball valve, injection valves, third injection point & hometails. For more detail refer to DIGICHEM-AB2-VB Manifold Assembly Drawing



**Convergent
Water
Controls**

PRODUCT:
DIGICHEM-AB2-VB-CABG

DRAWING TYPE:
Spare Parts

DRAWING No:
DIGICHEM-AB2-VB-CABG_ASM

COPYRIGHT
The designs, concepts & specifications within this drawing are the property of Convergent Water Controls Pty Ltd. They must not be copied or reproduced wholly or in part without written consent from Convergent Water Controls Pty Ltd.

DATE	Details	ISSUED BY	APPROVED BY
17/06/2020	Release Information	luke	LF

NOTE
Only use written dimensions. Dimensions are in Millimeters unless otherwise specified. Do not scale. If in doubt consult with Convergent Water Controls

FILE: C:\CWC\Library\Manufactured Products\System\Digichems\DIGICHEM-AB2-VB-CABG

MATERIAL: Misc

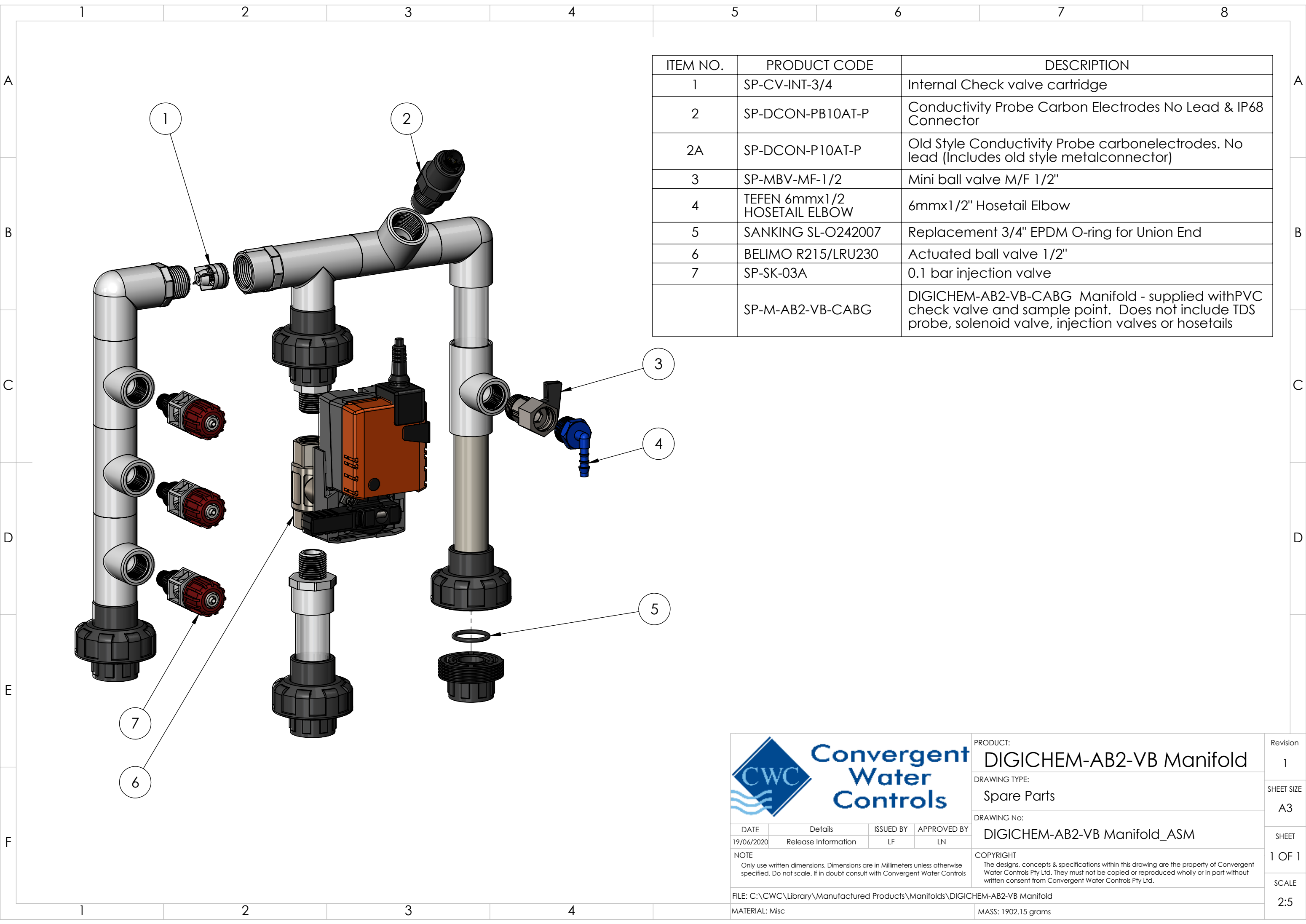
MASS: 11745.25 grams

Revision
1


SHEET SIZE
A3

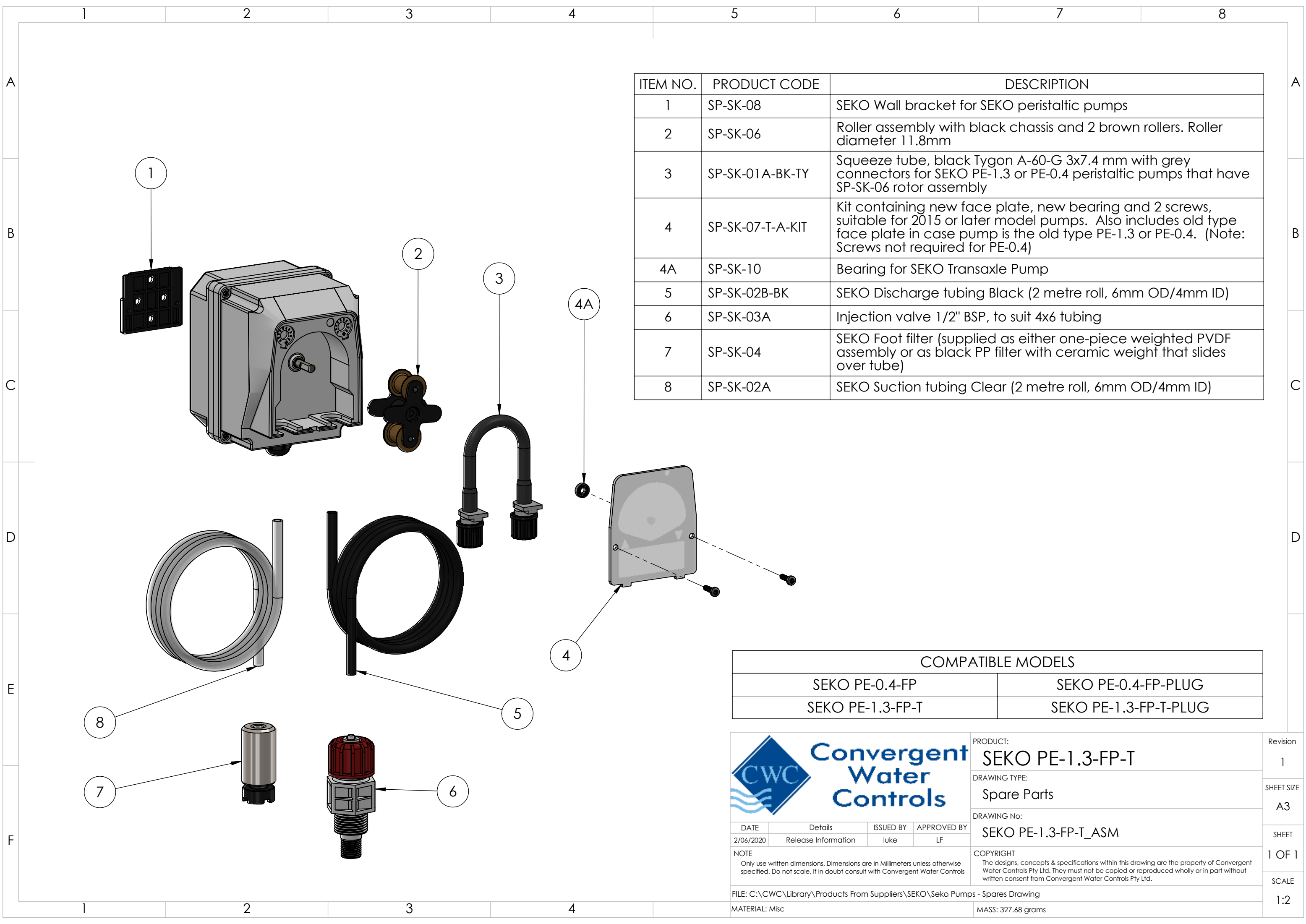
SHEET
1 OF 1

SCALE
1:5



ITEM NO.	PRODUCT CODE	DESCRIPTION
1	SP-CV-INT-3/4	Internal Check valve cartridge
2	SP-DCON-PB10AT-P	Conductivity Probe Carbon Electrodes No Lead & IP68 Connector
2A	SP-DCON-P10AT-P	Old Style Conductivity Probe carbonelectrodes. No lead (Includes old style metalconnector)
3	SP-MBV-MF-1/2	Mini ball valve M/F 1/2"
4	TEFEN 6mmx1/2 HOSETAIL ELBOW	6mmx1/2" Hosetail Elbow
5	SANKING SL-O242007	Replacement 3/4" EPDM O-ring for Union End
6	BELIMO R215/LRU230	Actuated ball valve 1/2"
7	SP-SK-03A	0.1 bar injection valve
	SP-M-AB2-VB-CABG	DIGICHEM-AB2-VB-CABG Manifold - supplied withPVC check valve and sample point. Does not include TDS probe, solenoid valve, injection valves or hosetails

 <div>Convergent Water Controls</div>				PRODUCT: DIGICHEM-AB2-VB Manifold		Revision 1
				DRAWING TYPE: Spare Parts		SHEET SIZE A3
DRAWING No: DIGICHEM-AB2-VB Manifold_ASM				SHEET 1 OF 1		
NOTE Only use written dimensions. Dimensions are in Millimeters unless otherwise specified. Do not scale. If in doubt consult with Convergent Water Controls				COPYRIGHT The designs, concepts & specifications within this drawing are the property of Convergent Water Controls Pty Ltd. They must not be copied or reproduced wholly or in part without written consent from Convergent Water Controls Pty Ltd.		
FILE: C:\CWC\Library\Manufactured Products\Manifolds\DIGICHEM-AB2-VB Manifold						
MATERIAL: Misc				MASS: 1902.15 grams		
SCALE 2:5						



ITEM NO.	PRODUCT CODE	DESCRIPTION
1	SP-SK-08	SEKO Wall bracket for SEKO peristaltic pumps
2	SP-SK-06	Roller assembly with black chassis and 2 brown rollers. Roller diameter 11.8mm
3	SP-SK-01A-BK-TY	Squeeze tube, black Tygon A-60-G 3x7.4 mm with grey connectors for SEKO PE-1.3 or PE-0.4 peristaltic pumps that have SP-SK-06 rotor assembly
4	SP-SK-07-T-A-KIT	Kit containing new face plate, new bearing and 2 screws, suitable for 2015 or later model pumps. Also includes old type face plate in case pump is the old type PE-1.3 or PE-0.4. (Note: Screws not required for PE-0.4)
4A	SP-SK-10	Bearing for SEKO Transaxle Pump
5	SP-SK-02B-BK	SEKO Discharge tubing Black (2 metre roll, 6mm OD/4mm ID)
6	SP-SK-03A	Injection valve 1/2" BSP, to suit 4x6 tubing
7	SP-SK-04	SEKO Foot filter (supplied as either one-piece weighted PVDF assembly or as black PP filter with ceramic weight that slides over tube)
8	SP-SK-02A	SEKO Suction tubing Clear (2 metre roll, 6mm OD/4mm ID)

COMPATIBLE MODELS	
SEKO PE-0.4-FP	SEKO PE-0.4-FP-PLUG
SEKO PE-1.3-FP-T	SEKO PE-1.3-FP-T-PLUG



PRODUCT:
SEKO PE-1.3-FP-T

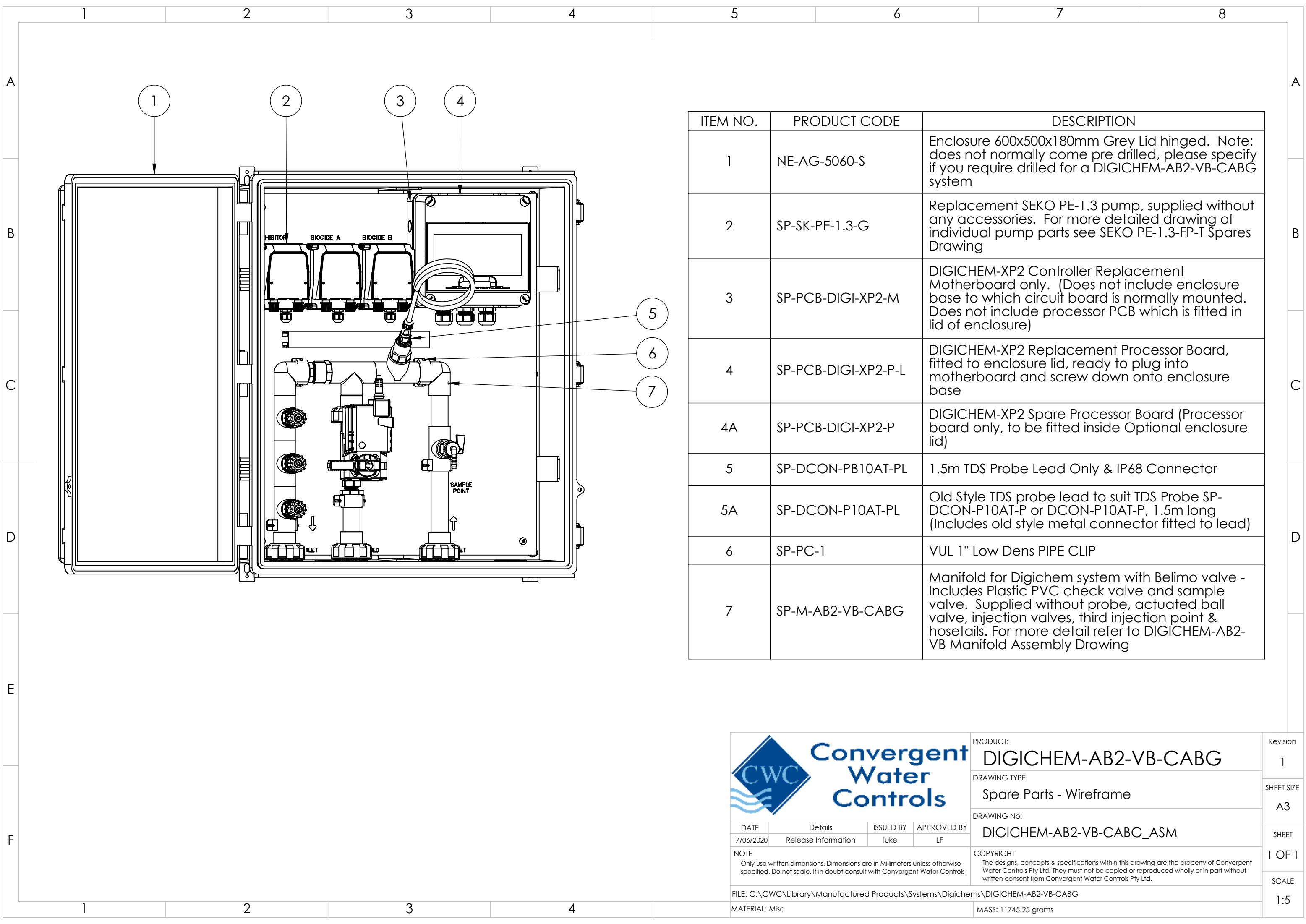
DRAWING TYPE:
Spare Parts

DRAWING No:
SEKO PE-1.3-FP-T_ASM

COPYRIGHT
The designs, concepts & specifications within this drawing are the property of Convergent Water Controls Pty Ltd. They must not be copied or reproduced wholly or in part without written consent from Convergent Water Controls Pty Ltd.

DATE 2/06/2020	Details Release Information	ISSUED BY luke	APPROVED BY LF
NOTE Only use written dimensions. Dimensions are in Millimeters unless otherwise specified. Do not scale. If in doubt consult with Convergent Water Controls			
FILE: C:\CWC\Library\Products From Suppliers\SEKO\Seko Pumps - Spares Drawing			
MATERIAL: Misc			

Revision 1
SHEET SIZE A3
SHEET 1 OF 1
SCALE 1:2



ITEM NO.	PRODUCT CODE	DESCRIPTION
1	NE-AG-5060-S	Enclosure 600x500x180mm Grey Lid hinged. Note: does not normally come pre drilled, please specify if you require drilled for a DIGICHEM-AB2-VB-CABG system
2	SP-SK-PE-1.3-G	Replacement SEKO PE-1.3 pump, supplied without any accessories. For more detailed drawing of individual pump parts see SEKO PE-1.3-FP-T Spares Drawing
3	SP-PCB-DIGI-XP2-M	DIGICHEM-XP2 Controller Replacement Motherboard only. (Does not include enclosure base to which circuit board is normally mounted. Does not include processor PCB which is fitted in lid of enclosure)
4	SP-PCB-DIGI-XP2-P-L	DIGICHEM-XP2 Replacement Processor Board, fitted to enclosure lid, ready to plug into motherboard and screw down onto enclosure base
4A	SP-PCB-DIGI-XP2-P	DIGICHEM-XP2 Spare Processor Board (Processor board only, to be fitted inside Optional enclosure lid)
5	SP-DCON-PB10AT-PL	1.5m TDS Probe Lead Only & IP68 Connector
5A	SP-DCON-P10AT-PL	Old Style TDS probe lead to suit TDS Probe SP-DCON-P10AT-P or DCON-P10AT-P, 1.5m long (Includes old style metal connector fitted to lead)
6	SP-PC-1	VUL 1" Low Dens PIPE CLIP
7	SP-M-AB2-VB-CABG	Manifold for Digichem system with Belimo valve - Includes Plastic PVC check valve and sample valve. Supplied without probe, actuated ball valve, injection valves, third injection point & hometails. For more detail refer to DIGICHEM-AB2-VB Manifold Assembly Drawing



Convergent
Water
Controls

PRODUCT:
DIGICHEM-AB2-VB-CABG

DRAWING TYPE:
Spare Parts - Wireframe

DRAWING No:
DIGICHEM-AB2-VB-CABG_ASM

COPYRIGHT
The designs, concepts & specifications within this drawing are the property of Convergent Water Controls Pty Ltd. They must not be copied or reproduced wholly or in part without written consent from Convergent Water Controls Pty Ltd.

DATE	Details	ISSUED BY	APPROVED BY
17/06/2020	Release Information	luke	LF

NOTE
Only use written dimensions. Dimensions are in Millimeters unless otherwise specified. Do not scale. If in doubt consult with Convergent Water Controls

FILE: C:\CWC\Library\Manufactured Products\System\Digichems\DIGICHEM-AB2-VB-CABG

MATERIAL: Misc

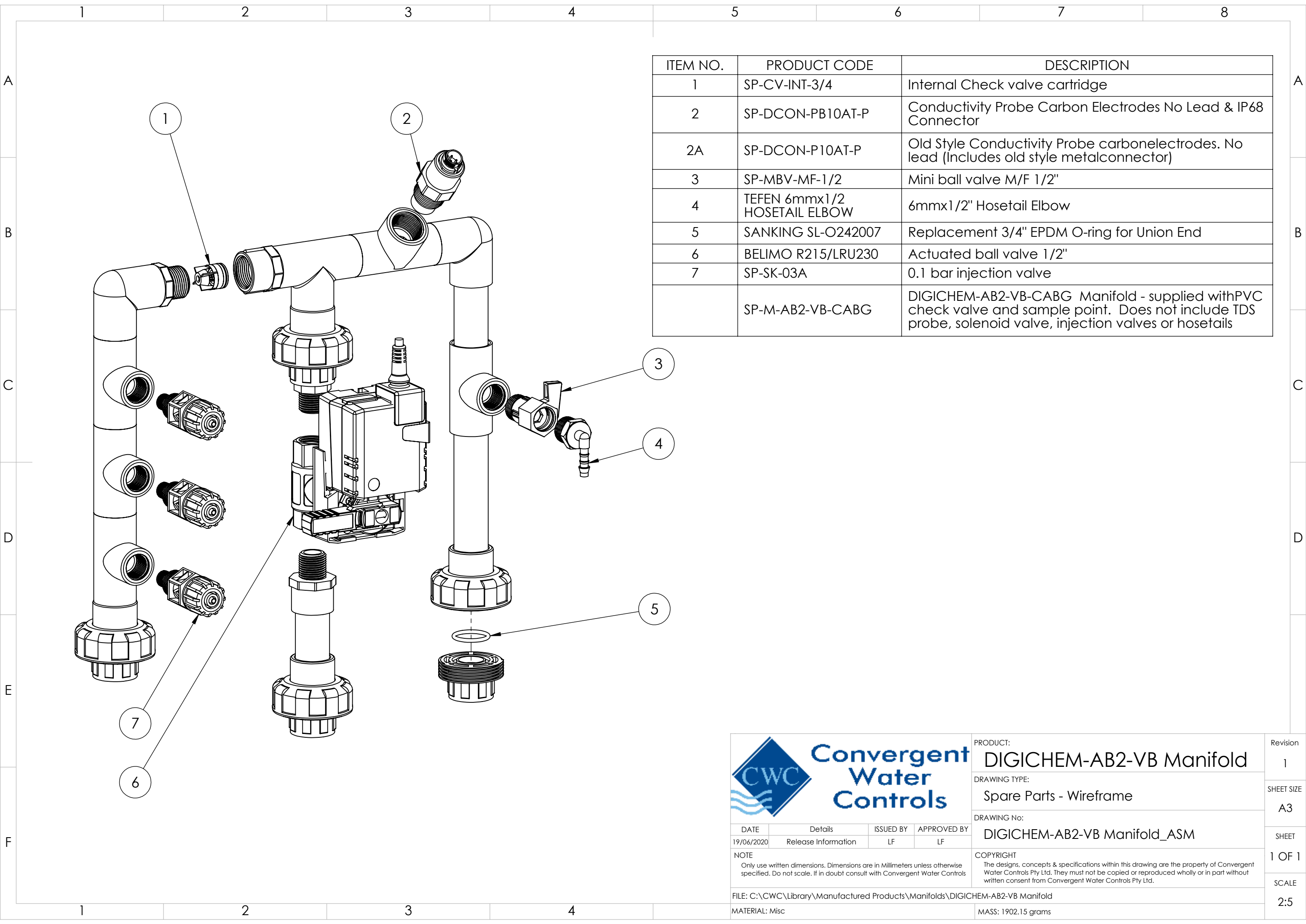
MASS: 11745.25 grams

Revision
1

SHEET SIZE
A3

SHEET
1 OF 1

SCALE
1:5



ITEM NO.	PRODUCT CODE	DESCRIPTION
1	SP-CV-INT-3/4	Internal Check valve cartridge
2	SP-DCON-PB10AT-P	Conductivity Probe Carbon Electrodes No Lead & IP68 Connector
2A	SP-DCON-P10AT-P	Old Style Conductivity Probe carbonelectrodes. No lead (Includes old style metalconnector)
3	SP-MBV-MF-1/2	Mini ball valve M/F 1/2"
4	TEFEN 6mmx1/2 HOSETAIL ELBOW	6mmx1/2" Hosetail Elbow
5	SANKING SL-O242007	Replacement 3/4" EPDM O-ring for Union End
6	BELIMO R215/LRU230	Actuated ball valve 1/2"
7	SP-SK-03A	0.1 bar injection valve
	SP-M-AB2-VB-CABG	DIGICHEM-AB2-VB-CABG Manifold - supplied withPVC check valve and sample point. Does not include TDS probe, solenoid valve, injection valves or hosetails



PRODUCT: DIGICHEM-AB2-VB Manifold

DRAWING TYPE: Spare Parts - Wireframe

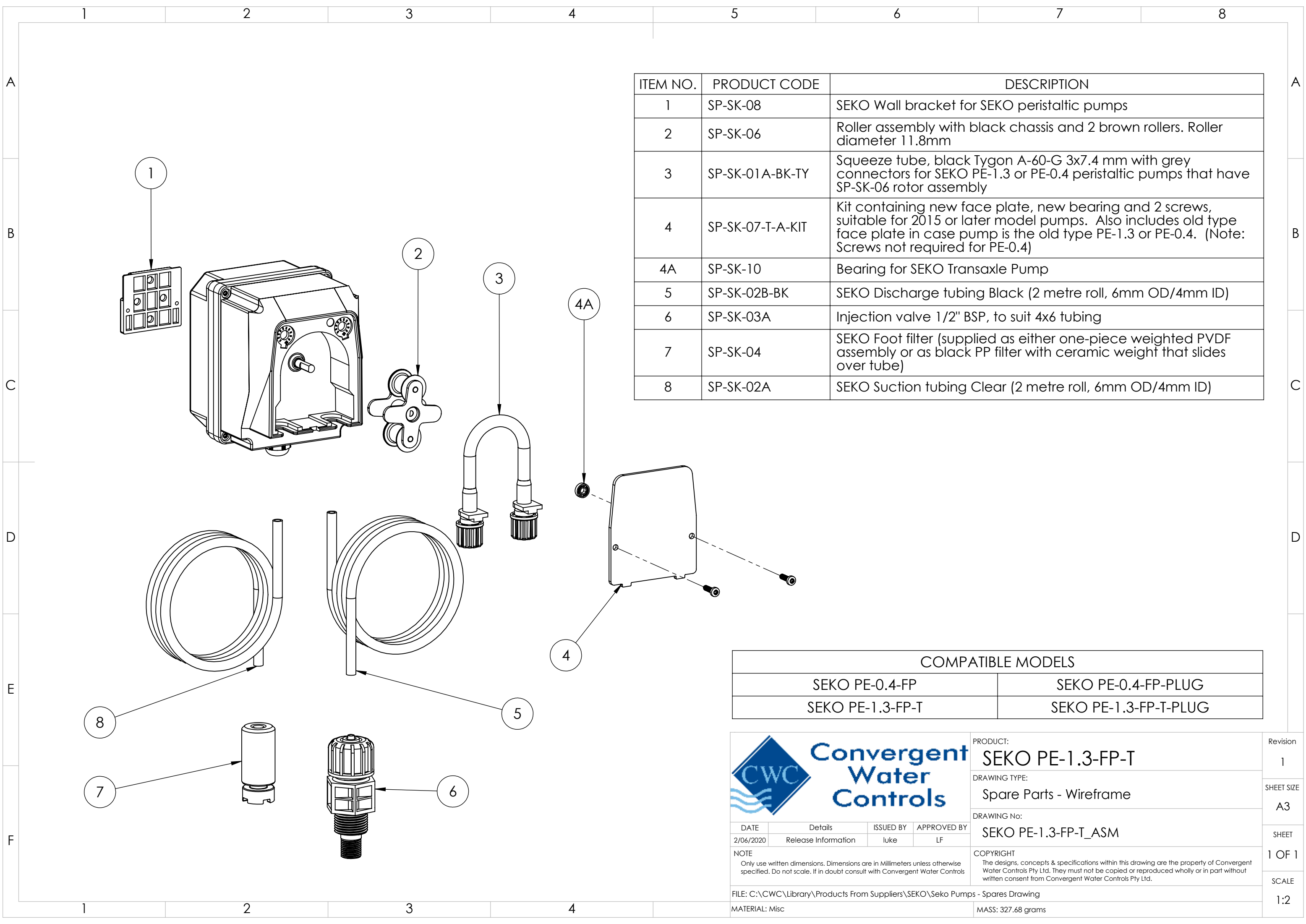
DRAWING No: DIGICHEM-AB2-VB Manifold_ASM

DATE	Details	ISSUED BY	APPROVED BY
19/06/2020	Release Information	LF	LF
NOTE Only use written dimensions. Dimensions are in Millimeters unless otherwise specified. Do not scale. If in doubt consult with Convergent Water Controls			
FILE: C:\CWC\Library\Manufactured Products\Manifolds\DIGICHEM-AB2-VB Manifold			
MATERIAL: Misc			

COPYRIGHT
The designs, concepts & specifications within this drawing are the property of Convergent Water Controls Pty Ltd. They must not be copied or reproduced wholly or in part without written consent from Convergent Water Controls Pty Ltd.

MASS: 1902.15 grams

Revision	1
SHEET SIZE	A3
SHEET	1 OF 1
SCALE	2:5



ITEM NO.	PRODUCT CODE	DESCRIPTION
1	SP-SK-08	SEKO Wall bracket for SEKO peristaltic pumps
2	SP-SK-06	Roller assembly with black chassis and 2 brown rollers. Roller diameter 11.8mm
3	SP-SK-01A-BK-TY	Squeeze tube, black Tygon A-60-G 3x7.4 mm with grey connectors for SEKO PE-1.3 or PE-0.4 peristaltic pumps that have SP-SK-06 rotor assembly
4	SP-SK-07-T-A-KIT	Kit containing new face plate, new bearing and 2 screws, suitable for 2015 or later model pumps. Also includes old type face plate in case pump is the old type PE-1.3 or PE-0.4. (Note: Screws not required for PE-0.4)
4A	SP-SK-10	Bearing for SEKO Transaxle Pump
5	SP-SK-02B-BK	SEKO Discharge tubing Black (2 metre roll, 6mm OD/4mm ID)
6	SP-SK-03A	Injection valve 1/2" BSP, to suit 4x6 tubing
7	SP-SK-04	SEKO Foot filter (supplied as either one-piece weighted PVDF assembly or as black PP filter with ceramic weight that slides over tube)
8	SP-SK-02A	SEKO Suction tubing Clear (2 metre roll, 6mm OD/4mm ID)

COMPATIBLE MODELS	
SEKO PE-0.4-FP	SEKO PE-0.4-FP-PLUG
SEKO PE-1.3-FP-T	SEKO PE-1.3-FP-T-PLUG

		PRODUCT:	SEKO PE-1.3-FP-T	Revision	1
		DRAWING TYPE:	Spare Parts - Wireframe	SHEET SIZE	A3
DATE		Details	ISSUED BY	APPROVED BY	SHEET
2/06/2020		Release Information	luke	LF	1 OF 1
NOTE		COPYRIGHT			SCALE
Only use written dimensions. Dimensions are in Millimeters unless otherwise specified. Do not scale. If in doubt consult with Convergent Water Controls		The designs, concepts & specifications within this drawing are the property of Convergent Water Controls Pty Ltd. They must not be copied or reproduced wholly or in part without written consent from Convergent Water Controls Pty Ltd.			1:2
FILE: C:\CWC\Library\Products From Suppliers\SEKO\Seko Pumps - Spares Drawing					
MATERIAL: Misc		MASS: 327.68 grams			