
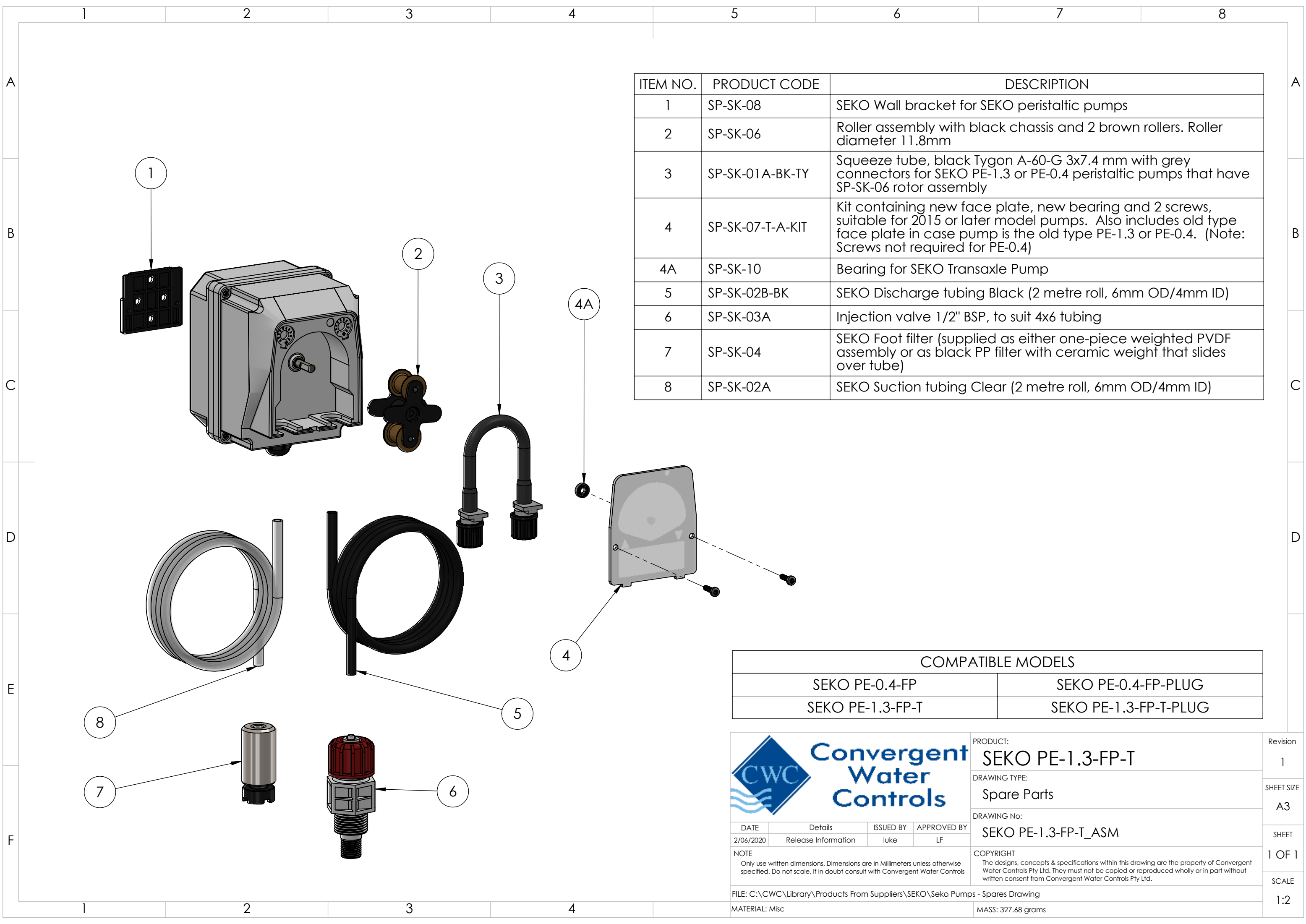


ITEM NO.	PRODUCT CODE	DESCRIPTION
1	SP-PCB-DIGI-XP2-M	DIGICHEM-XP2 Controller Replacement Motherboard only. (Does not include enclosure base to which circuit board is normally mounted. Does not include processor PCB which is fitted in lid of enclosure)
2	SP-PCB-DIGI-XP2-P-L	DIGICHEM-XP2 Replacement Processor Board, fitted to enclosure lid, ready to plug into motherboard and screw down onto enclosure base
2A	SP-PCB-DIGI-XP2-P	DIGICHEM-XP2 Spare Processor Board (Processor board only, to be fitted inside Optional enclosure lid)
3	SP-SK-PE-1.3-G	Replacement SEKO PE-1.3 pump, supplied without any accessories. For more detailed drawing of individual pump parts see SEKO PE-1.3-FP-T Spares Drawing
4	SP-DCON-PB10AT-PL	TDS probe lead to suit TDS Probe SP-DCON-PB10AT-P or DCONPB10AT-P, 1.5m long (Includes IP68 connector fitted to lead)
4A	SP-DCON-P10AT-PL	Old Style TDS probe lead to suit TDS Probe SP-DCON-P10AT-P or DCON-P10AT-P, 1.5m long (Includes old style metal connector fitted to lead)
5	SP-M-AB2-V-CVPVC	Digichem Manifold - Includes Plastic PVC check valve and sample valve. Supplied without probe, solenoid valve, injection valves, third injection point & hosetails. For more detailed drawing of individual manifold parts see MAN 2P-V-S-CVPVC Spares Drawing
6	TEFEN 12mmx3/4 HOSETAIL	12mmx3/4" Hosetail
7	SP-M-INJ-TEE-M-F	3rd Injection point to retrofit to manifold outlet. Includes Injection valve, 1/2" Tee and 3/4" Male and Female adaptors to screw into manifold
8	SP-PC-1	VUL 1" Low Dens PIPE CLIP

COMPATIBLE MODELS		
DIGICHEM-A2-V	DIGICHEM-AB2-V	DIGICHEM-X/3S-V

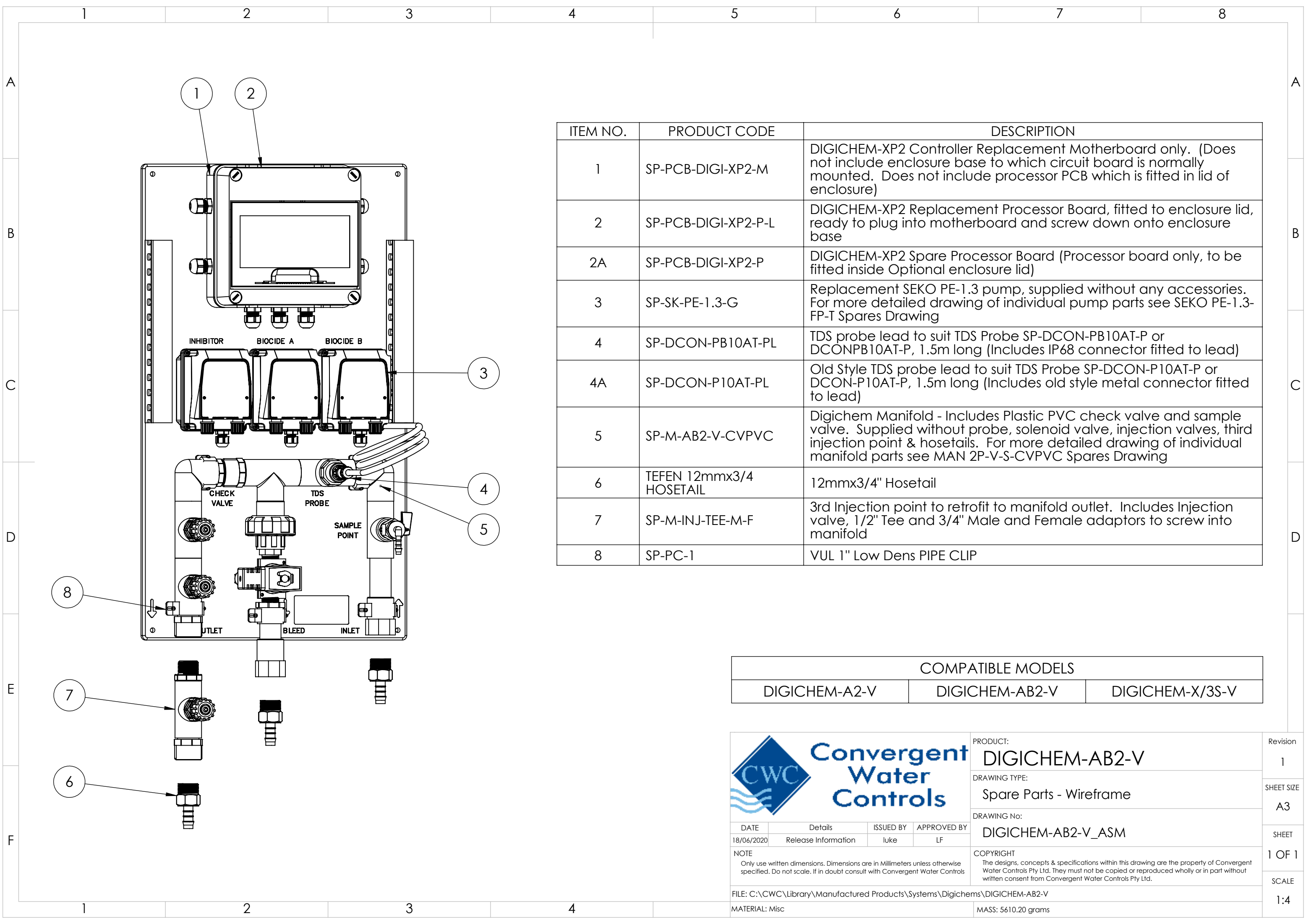
<div></div> <div>Convergent Water Controls</div>				PRODUCT: DIGICHEM-AB2-V		Revision 1
				DRAWING TYPE: Spare Parts		SHEET SIZE A3
				DRAWING No: DIGICHEM-AB2-V_ASM		SHEET 1 OF 1
				COPYRIGHT The designs, concepts & specifications within this drawing are the property of Convergent Water Controls Pty Ltd. They must not be copied or reproduced wholly or in part without written consent from Convergent Water Controls Pty Ltd.		SCALE 1:4
FILE: C:\CWC\Library\Manufactured Products\System\Digichems\DIGICHEM-AB2-V						
MATERIAL: Misc				MASS: 5610.20 grams		



ITEM NO.	PRODUCT CODE	DESCRIPTION
1	SP-SK-08	SEKO Wall bracket for SEKO peristaltic pumps
2	SP-SK-06	Roller assembly with black chassis and 2 brown rollers. Roller diameter 11.8mm
3	SP-SK-01A-BK-TY	Squeeze tube, black Tygon A-60-G 3x7.4 mm with grey connectors for SEKO PE-1.3 or PE-0.4 peristaltic pumps that have SP-SK-06 rotor assembly
4	SP-SK-07-T-A-KIT	Kit containing new face plate, new bearing and 2 screws, suitable for 2015 or later model pumps. Also includes old type face plate in case pump is the old type PE-1.3 or PE-0.4. (Note: Screws not required for PE-0.4)
4A	SP-SK-10	Bearing for SEKO Transaxle Pump
5	SP-SK-02B-BK	SEKO Discharge tubing Black (2 metre roll, 6mm OD/4mm ID)
6	SP-SK-03A	Injection valve 1/2" BSP, to suit 4x6 tubing
7	SP-SK-04	SEKO Foot filter (supplied as either one-piece weighted PVDF assembly or as black PP filter with ceramic weight that slides over tube)
8	SP-SK-02A	SEKO Suction tubing Clear (2 metre roll, 6mm OD/4mm ID)

COMPATIBLE MODELS	
SEKO PE-0.4-FP	SEKO PE-0.4-FP-PLUG
SEKO PE-1.3-FP-T	SEKO PE-1.3-FP-T-PLUG

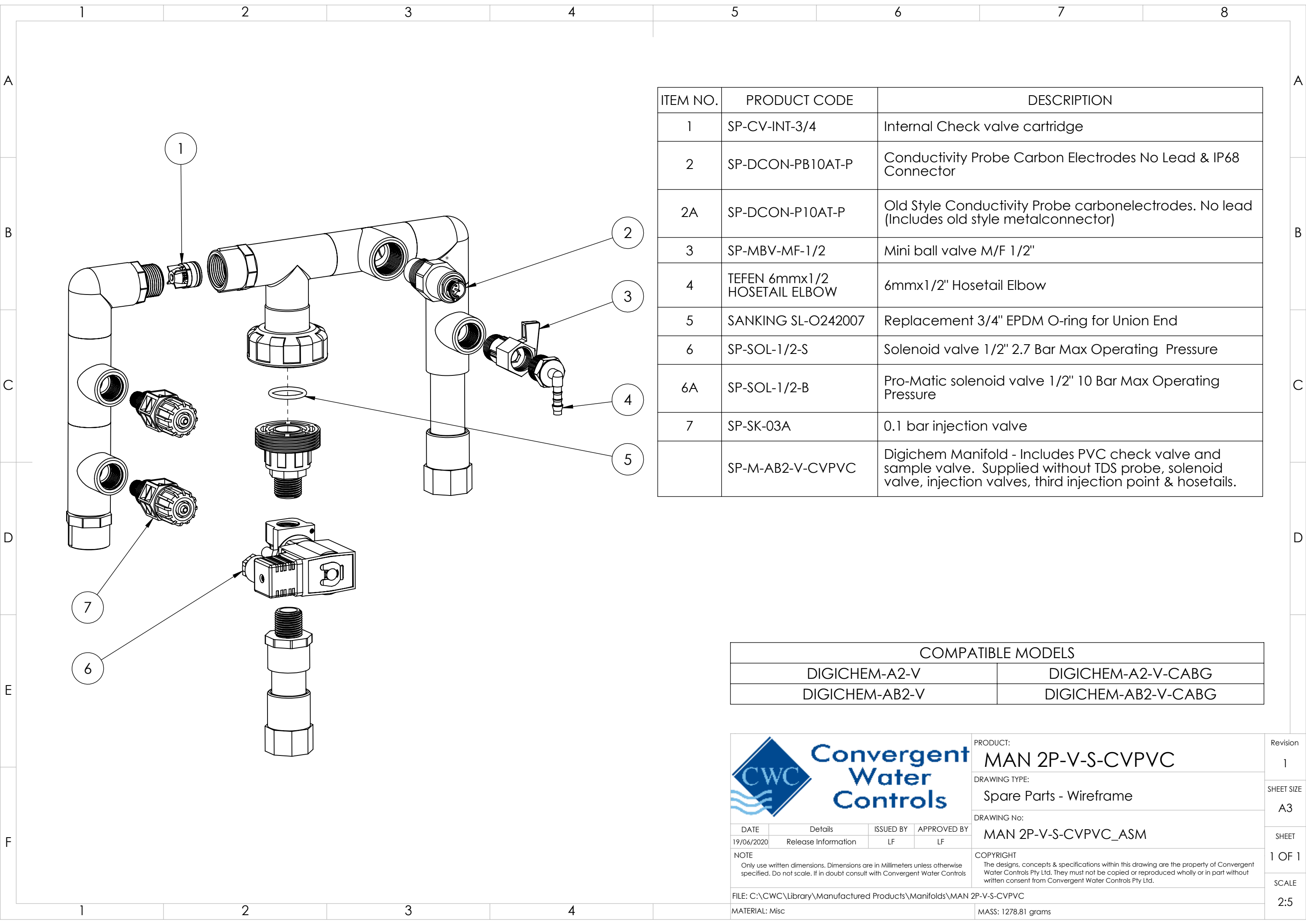
		PRODUCT:	SEKO PE-1.3-FP-T	Revision	1
		DRAWING TYPE:	Spare Parts	SHEET SIZE	A3
		DRAWING No:	SEKO PE-1.3-FP-T_ASM	SHEET	1 OF 1
DATE		Details	ISSUED BY	APPROVED BY	SCALE
2/06/2020		Release Information	luke	LF	1:2
NOTE		COPYRIGHT			
Only use written dimensions. Dimensions are in Millimeters unless otherwise specified. If in doubt consult with Convergent Water Controls		The designs, concepts & specifications within this drawing are the property of Convergent Water Controls Pty Ltd. They must not be copied or reproduced wholly or in part without written consent from Convergent Water Controls Pty Ltd.			
FILE: C:\CWC\Library\Products From Suppliers\SEKO\Seko Pumps - Spares Drawing					
MATERIAL: Misc		MASS: 327.68 grams			



ITEM NO.	PRODUCT CODE	DESCRIPTION
1	SP-PCB-DIGI-XP2-M	DIGICHEM-XP2 Controller Replacement Motherboard only. (Does not include enclosure base to which circuit board is normally mounted. Does not include processor PCB which is fitted in lid of enclosure)
2	SP-PCB-DIGI-XP2-P-L	DIGICHEM-XP2 Replacement Processor Board, fitted to enclosure lid, ready to plug into motherboard and screw down onto enclosure base
2A	SP-PCB-DIGI-XP2-P	DIGICHEM-XP2 Spare Processor Board (Processor board only, to be fitted inside Optional enclosure lid)
3	SP-SK-PE-1.3-G	Replacement SEKO PE-1.3 pump, supplied without any accessories. For more detailed drawing of individual pump parts see SEKO PE-1.3-FP-T Spares Drawing
4	SP-DCON-PB10AT-PL	TDS probe lead to suit TDS Probe SP-DCON-PB10AT-P or DCONPB10AT-P, 1.5m long (Includes IP68 connector fitted to lead)
4A	SP-DCON-P10AT-PL	Old Style TDS probe lead to suit TDS Probe SP-DCON-P10AT-P or DCON-P10AT-P, 1.5m long (Includes old style metal connector fitted to lead)
5	SP-M-AB2-V-CVPVC	Digichem Manifold - Includes Plastic PVC check valve and sample valve. Supplied without probe, solenoid valve, injection valves, third injection point & hosetails. For more detailed drawing of individual manifold parts see MAN 2P-V-S-CVPVC Spares Drawing
6	TEFEN 12mmx3/4 HOSETAIL	12mmx3/4" Hosetail
7	SP-M-INJ-TEE-M-F	3rd Injection point to retrofit to manifold outlet. Includes Injection valve, 1/2" Tee and 3/4" Male and Female adaptors to screw into manifold
8	SP-PC-1	VUL 1" Low Dens PIPE CLIP


COMPATIBLE MODELS		
DIGICHEM-A2-V	DIGICHEM-AB2-V	DIGICHEM-X/3S-V

				PRODUCT: DIGICHEM-AB2-V	
				DRAWING TYPE: Spare Parts - Wireframe	
				DRAWING No: DIGICHEM-AB2-V_ASM	
DATE	Details	ISSUED BY	APPROVED BY	COPYRIGHT The designs, concepts & specifications within this drawing are the property of Convergent Water Controls Pty Ltd. They must not be copied or reproduced wholly or in part without written consent from Convergent Water Controls Pty Ltd.	
18/06/2020	Release Information	luke	LF		
NOTE Only use written dimensions. Dimensions are in Millimeters unless otherwise specified. Do not scale. If in doubt consult with Convergent Water Controls					
FILE: C:\CWC\Library\Manufactured Products\System\Digichems\DigICHEM-AB2-V					
MATERIAL: Misc				MASS: 5610.20 grams	



ITEM NO.	PRODUCT CODE	DESCRIPTION
1	SP-CV-INT-3/4	Internal Check valve cartridge
2	SP-DCON-PB10AT-P	Conductivity Probe Carbon Electrodes No Lead & IP68 Connector
2A	SP-DCON-P10AT-P	Old Style Conductivity Probe carbonelectrodes. No lead (Includes old style metalconnector)
3	SP-MBV-MF-1/2	Mini ball valve M/F 1/2"
4	TEFEN 6mmx1/2 HOSETAIL ELBOW	6mmx1/2" Hosetail Elbow
5	SANKING SL-O242007	Replacement 3/4" EPDM O-ring for Union End
6	SP-SOL-1/2-S	Solenoid valve 1/2" 2.7 Bar Max Operating Pressure
6A	SP-SOL-1/2-B	Pro-Matic solenoid valve 1/2" 10 Bar Max Operating Pressure
7	SP-SK-03A	0.1 bar injection valve
	SP-M-AB2-V-CVPVC	Digichem Manifold - Includes PVC check valve and sample valve. Supplied without TDS probe, solenoid valve, injection valves, third injection point & hosetails.

COMPATIBLE MODELS	
DIGICHEM-A2-V	DIGICHEM-A2-V-CABG
DIGICHEM-AB2-V	DIGICHEM-AB2-V-CABG



PRODUCT:
MAN 2P-V-S-CVPVC

DRAWING TYPE:
Spare Parts - Wireframe

DRAWING No:
MAN 2P-V-S-CVPVC_ASM

COPYRIGHT
The designs, concepts & specifications within this drawing are the property of Convergent Water Controls Pty Ltd. They must not be copied or reproduced wholly or in part without written consent from Convergent Water Controls Pty Ltd.

DATE
19/06/2020

Details
Release Information

ISSUED BY
LF

APPROVED BY
LF

NOTE
Only use written dimensions. Dimensions are in Millimeters unless otherwise specified. Do not scale. If in doubt consult with Convergent Water Controls

FILE: C:\CWC\Library\Manufactured Products\Manifolds\MAN 2P-V-S-CVPVC

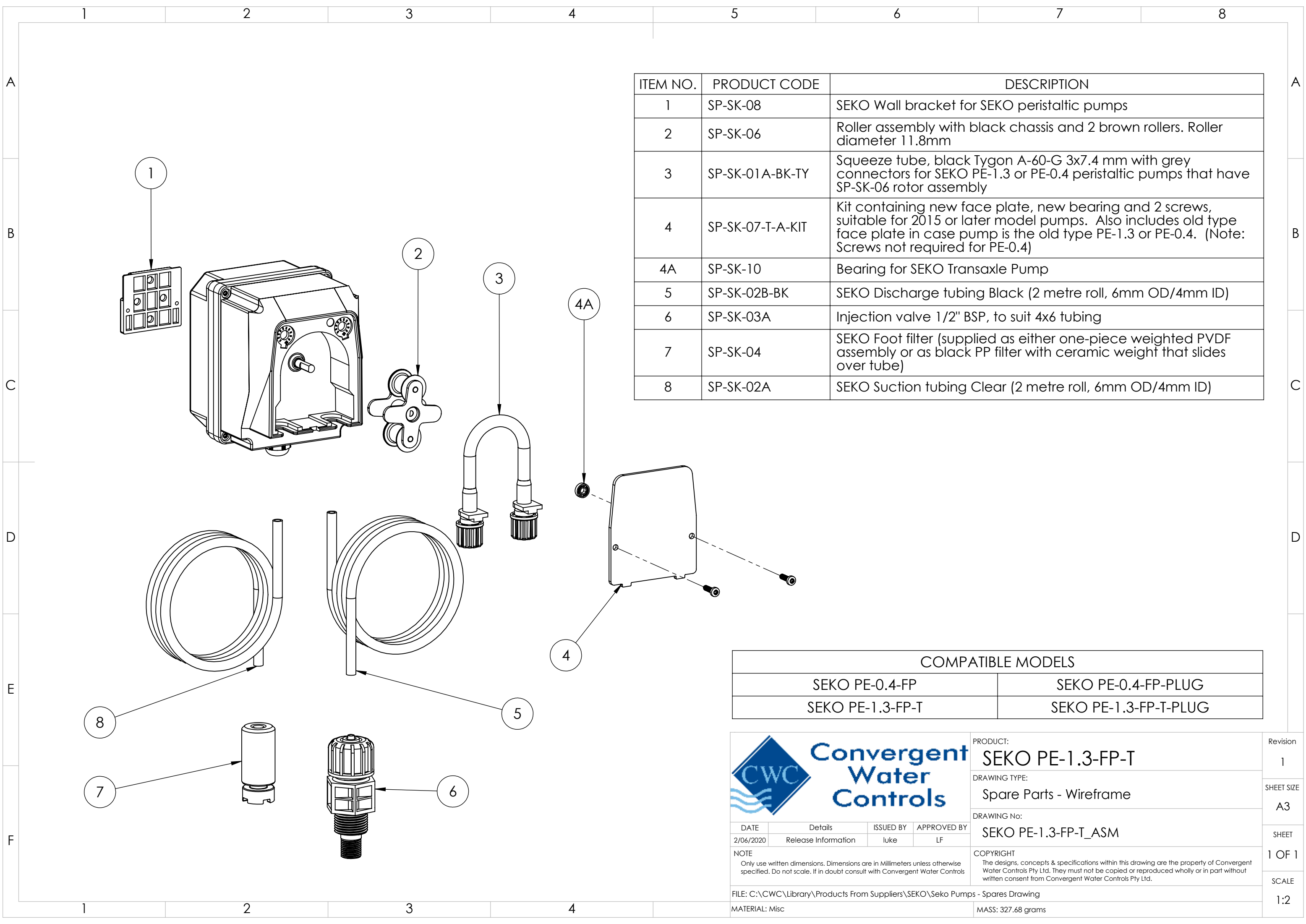
MATERIAL: Misc

Revision
1

SHEET SIZE
A3

SHEET
1 OF 1

SCALE
2:5



ITEM NO.	PRODUCT CODE	DESCRIPTION
1	SP-SK-08	SEKO Wall bracket for SEKO peristaltic pumps
2	SP-SK-06	Roller assembly with black chassis and 2 brown rollers. Roller diameter 11.8mm
3	SP-SK-01A-BK-TY	Squeeze tube, black Tygon A-60-G 3x7.4 mm with grey connectors for SEKO PE-1.3 or PE-0.4 peristaltic pumps that have SP-SK-06 rotor assembly
4	SP-SK-07-T-A-KIT	Kit containing new face plate, new bearing and 2 screws, suitable for 2015 or later model pumps. Also includes old type face plate in case pump is the old type PE-1.3 or PE-0.4. (Note: Screws not required for PE-0.4)
4A	SP-SK-10	Bearing for SEKO Transaxle Pump
5	SP-SK-02B-BK	SEKO Discharge tubing Black (2 metre roll, 6mm OD/4mm ID)
6	SP-SK-03A	Injection valve 1/2" BSP, to suit 4x6 tubing
7	SP-SK-04	SEKO Foot filter (supplied as either one-piece weighted PVDF assembly or as black PP filter with ceramic weight that slides over tube)
8	SP-SK-02A	SEKO Suction tubing Clear (2 metre roll, 6mm OD/4mm ID)

COMPATIBLE MODELS	
SEKO PE-0.4-FP	SEKO PE-0.4-FP-PLUG
SEKO PE-1.3-FP-T	SEKO PE-1.3-FP-T-PLUG

		PRODUCT:	SEKO PE-1.3-FP-T	Revision	1
		DRAWING TYPE:	Spare Parts - Wireframe	SHEET SIZE	A3
		DRAWING No:	SEKO PE-1.3-FP-T_ASM	SHEET	1 OF 1
DATE		Details	ISSUED BY	APPROVED BY	SCALE
2/06/2020		Release Information	luke	LF	1:2
NOTE		COPYRIGHT			
Only use written dimensions. Dimensions are in Millimeters unless otherwise specified. Do not scale. If in doubt consult with Convergent Water Controls		The designs, concepts & specifications within this drawing are the property of Convergent Water Controls Pty Ltd. They must not be copied or reproduced wholly or in part without written consent from Convergent Water Controls Pty Ltd.			
FILE: C:\CWC\Library\Products From Suppliers\SEKO\Seko Pumps - Spares Drawing					
MATERIAL: Misc		MASS: 327.68 grams			