
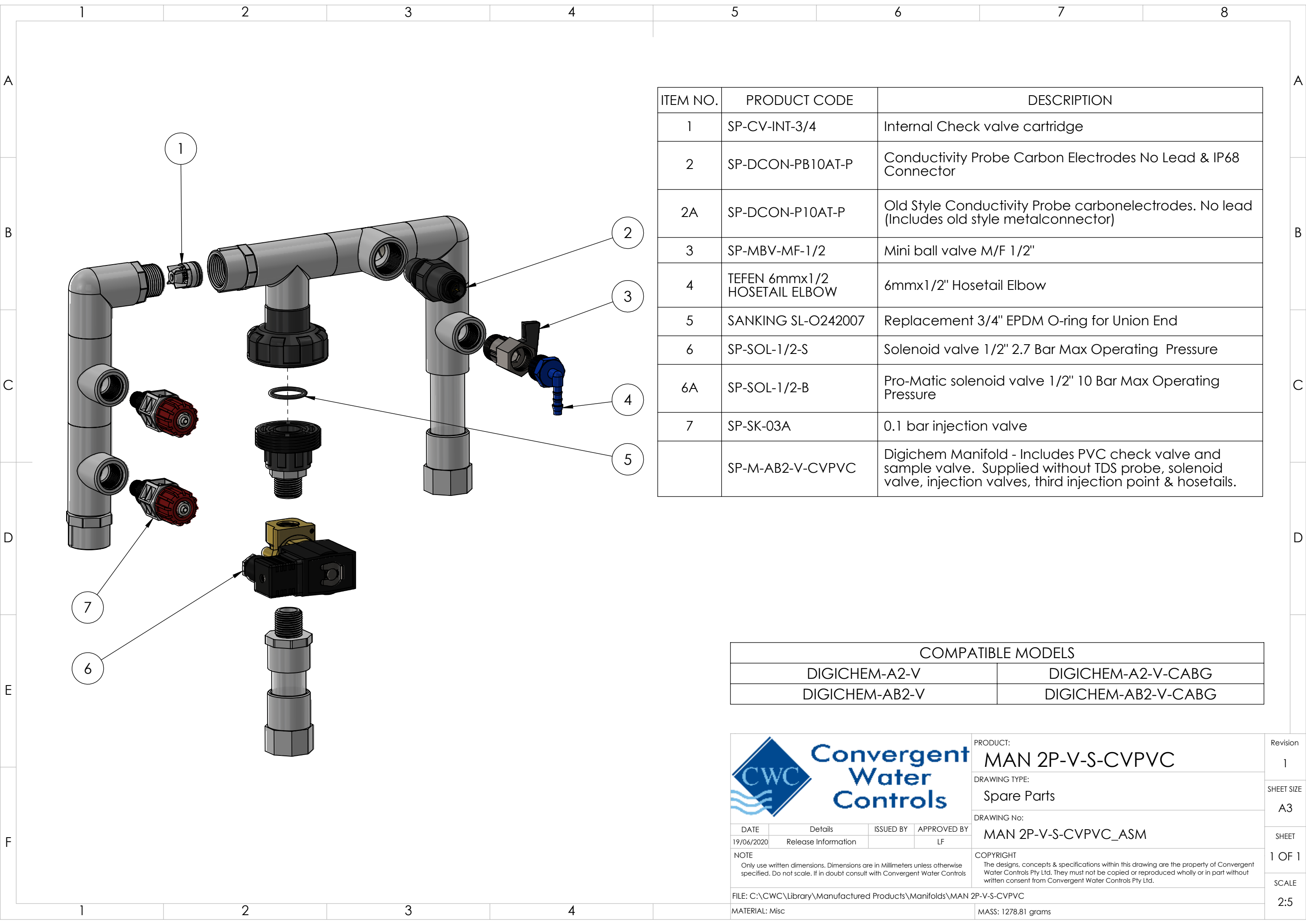


ITEM NO.	PRODUCT CODE	DESCRIPTION
1	NE-AG-2939	Boxco IP66 Polycarbonate 300x400x150mm Grey lid hinged. Note: does not normally come pre drilled, please specify if you require drilled for a DIGICHEM-AB2-V-CABG system
2	SP-PCB-DIGI-XP2-M	DIGICHEM-XP2 Controller Replacement Motherboard only. (Does not include enclosure base to which circuit board is normally mounted. Does not include processor PCB which is fitted in lid of enclosure)
3	SP-PCB-DIGI-XP2-P-L	DIGICHEM-XP2 Replacement Processor Board, fitted to enclosure lid, ready to plug into motherboard and screw down onto enclosure base
3A	SP-PCB-DIGI-XP2-P	DIGICHEM-XP2 Spare Processor Board (Processor board only, to be fitted inside Optional enclosure lid)
4	SP-SK-PE-1.3-G	Replacement SEKO PE-1.3 pump, supplied without any accessories. For more detailed drawing of individual pump parts see SEKO PE-1.3-FP-T Spares Drawing
5	SP-M-AB2-V-CVPVC	Digichem Manifold - Includes Plastic PVC check valve and sample valve. Supplied without probe, solenoid valve, injection valves, third injection point & hosetails. For more detailed drawing of individual manifold parts see MAN 2P-V-S-CVPVC Spares Drawing
6	SP-DCON-PB10AT-PL	1.5m TDS Probe Lead Only & IP68 Connector
6A	SP-DCON-P10AT-PL	Old Style TDS probe lead to suit TDS Probe SP-DCON-P10AT-P or DCON-P10AT-P, 1.5m long (Includes old style metal connector fitted to lead)
7	TEFEN 12mmx3/4 HOSETAIL	12mmx3/4" Hosetail
8	SP-M-INJ-TEE-M-F	3rd Injection point to retrofit to manifold outlet. Includes Injection valve, 1/2" Tee and 3/4" Male and Female adaptors to screw into manifold
9	SP-PC-1	VUL 1" Low Dens PIPE CLIP


COMPATIBLE MODELS		
DIGICHEM-A2-V	DIGICHEM-AB2-V	DIGICHEM-X/3S-V
DIGICHEM-A2-V-CABG	DIGICHEM-AB2-V-CABG	DIGICHEM-X/3S-V-CABG

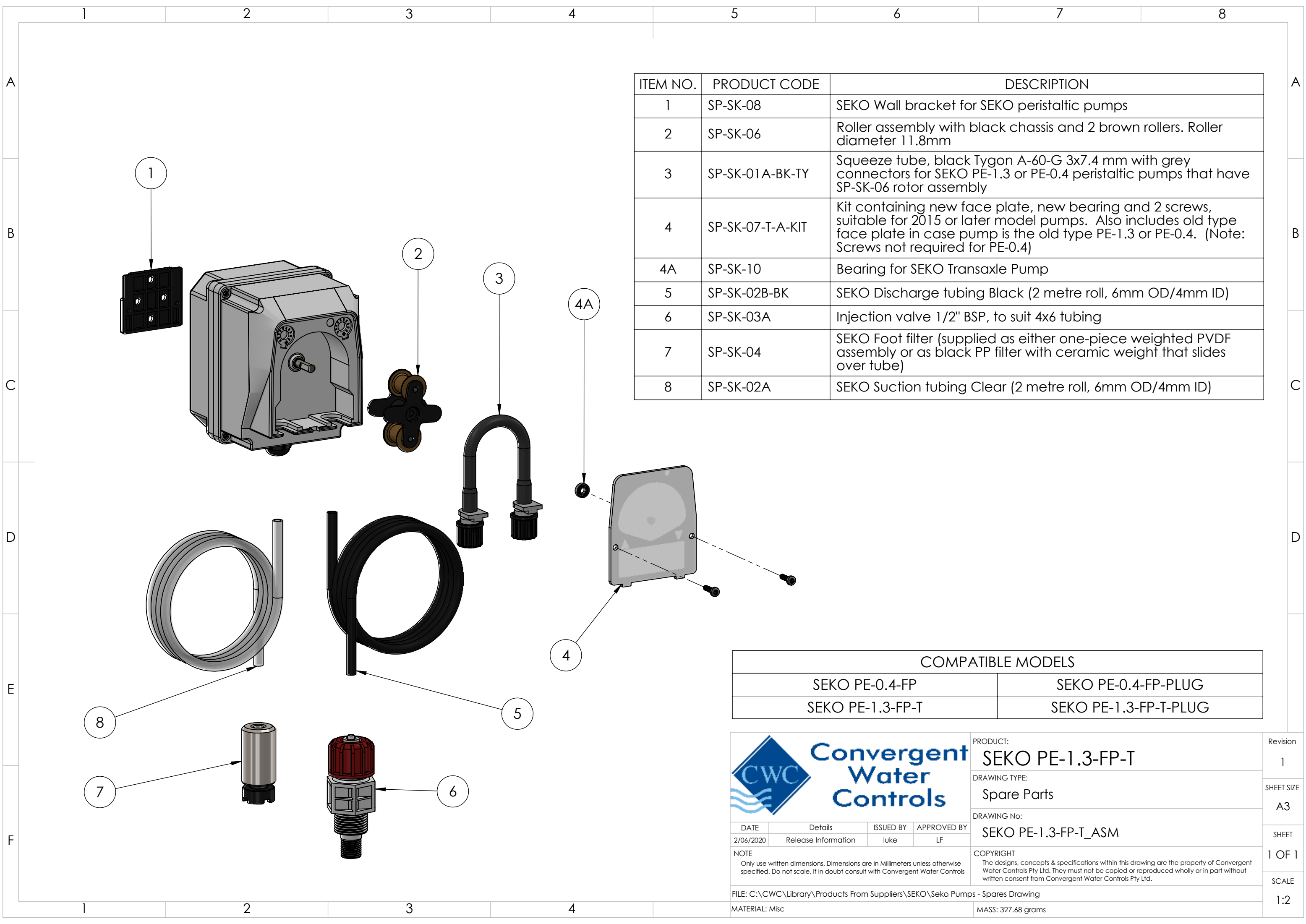
 <div>Convergent Water Controls</div>				PRODUCT:	DIGICHEM-AB2-V-CABG	Revision	1
				DRAWING TYPE:	Spare Parts	SHEET SIZE	A3
DRAWING No:				DIGICHEM-AB2-V-CABG_ASM	SHEET	1 OF 1	
NOTE				COPYRIGHT	SCALE		
Only use written dimensions. Dimensions are in Millimeters unless otherwise specified. Do not scale. If in doubt consult with Convergent Water Controls				The designs, concepts & specifications within this drawing are the property of Convergent Water Controls Pty Ltd. They must not be copied or reproduced wholly or in part without written consent from Convergent Water Controls Pty Ltd.		1:4	
FILE: C:\CWC\Library\Manufactured Products\System\Digichems\DIGICHEM-AB2-V-CABG							
MATERIAL: Misc				MASS: 6206.42 grams			



ITEM NO.	PRODUCT CODE	DESCRIPTION
1	SP-CV-INT-3/4	Internal Check valve cartridge
2	SP-DCON-PB10AT-P	Conductivity Probe Carbon Electrodes No Lead & IP68 Connector
2A	SP-DCON-P10AT-P	Old Style Conductivity Probe carbonelectrodes. No lead (Includes old style metalconnector)
3	SP-MBV-MF-1/2	Mini ball valve M/F 1/2"
4	TEFEN 6mmx1/2 HOSETAIL ELBOW	6mmx1/2" Hosetail Elbow
5	SANKING SL-O242007	Replacement 3/4" EPDM O-ring for Union End
6	SP-SOL-1/2-S	Solenoid valve 1/2" 2.7 Bar Max Operating Pressure
6A	SP-SOL-1/2-B	Pro-Matic solenoid valve 1/2" 10 Bar Max Operating Pressure
7	SP-SK-03A	0.1 bar injection valve
	SP-M-AB2-V-CVPVC	Digichem Manifold - Includes PVC check valve and sample valve. Supplied without TDS probe, solenoid valve, injection valves, third injection point & hosetails.


COMPATIBLE MODELS	
DIGICHEM-A2-V	DIGICHEM-A2-V-CABG
DIGICHEM-AB2-V	DIGICHEM-AB2-V-CABG

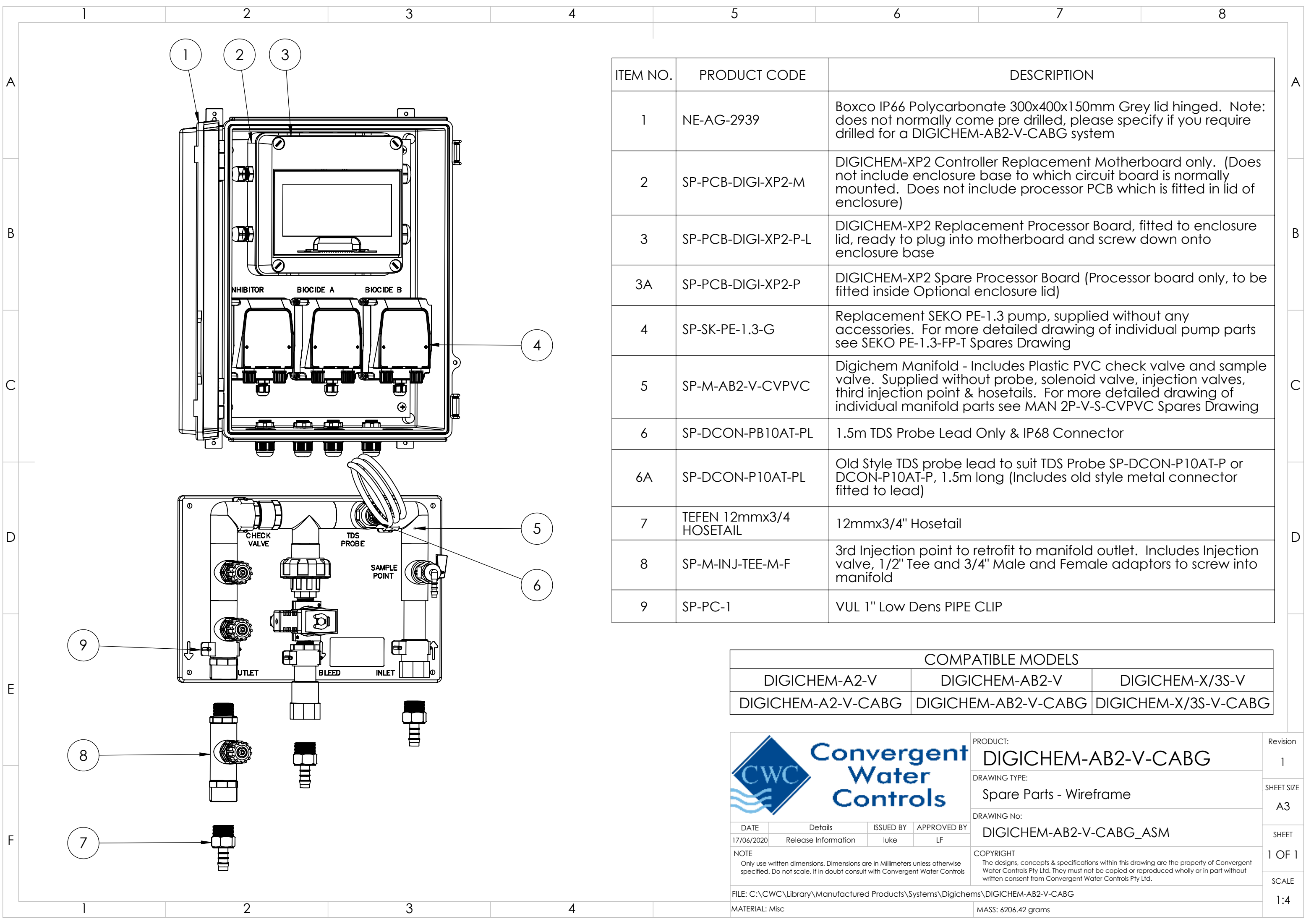
		PRODUCT:	MAN 2P-V-S-CVPVC	Revision	1
		DRAWING TYPE:	Spare Parts	SHEET SIZE	A3
		DRAWING No:	MAN 2P-V-S-CVPVC_ASM	SHEET	1 OF 1
		NOTE	COPYRIGHT The designs, concepts & specifications within this drawing are the property of Convergent Water Controls Pty Ltd. They must not be copied or reproduced wholly or in part without written consent from Convergent Water Controls Pty Ltd.		
		FILE: C:\CWC\Library\Manufactured Products\Manifolds\MAN 2P-V-S-CVPVC			
		MATERIAL: Misc	MASS: 1278.81 grams		
					SCALE 2:5



ITEM NO.	PRODUCT CODE	DESCRIPTION
1	SP-SK-08	SEKO Wall bracket for SEKO peristaltic pumps
2	SP-SK-06	Roller assembly with black chassis and 2 brown rollers. Roller diameter 11.8mm
3	SP-SK-01A-BK-TY	Squeeze tube, black Tygon A-60-G 3x7.4 mm with grey connectors for SEKO PE-1.3 or PE-0.4 peristaltic pumps that have SP-SK-06 rotor assembly
4	SP-SK-07-T-A-KIT	Kit containing new face plate, new bearing and 2 screws, suitable for 2015 or later model pumps. Also includes old type face plate in case pump is the old type PE-1.3 or PE-0.4. (Note: Screws not required for PE-0.4)
4A	SP-SK-10	Bearing for SEKO Transaxle Pump
5	SP-SK-02B-BK	SEKO Discharge tubing Black (2 metre roll, 6mm OD/4mm ID)
6	SP-SK-03A	Injection valve 1/2" BSP, to suit 4x6 tubing
7	SP-SK-04	SEKO Foot filter (supplied as either one-piece weighted PVDF assembly or as black PP filter with ceramic weight that slides over tube)
8	SP-SK-02A	SEKO Suction tubing Clear (2 metre roll, 6mm OD/4mm ID)

COMPATIBLE MODELS	
SEKO PE-0.4-FP	SEKO PE-0.4-FP-PLUG
SEKO PE-1.3-FP-T	SEKO PE-1.3-FP-T-PLUG

		PRODUCT:	SEKO PE-1.3-FP-T	Revision	1
		DRAWING TYPE:	Spare Parts	SHEET SIZE	A3
		DRAWING No:	SEKO PE-1.3-FP-T_ASM	SHEET	1 OF 1
DATE		Details	ISSUED BY	APPROVED BY	SCALE
2/06/2020		Release Information	luke	LF	1:2
NOTE		COPYRIGHT			
Only use written dimensions. Dimensions are in Millimeters unless otherwise specified. If in doubt consult with Convergent Water Controls		The designs, concepts & specifications within this drawing are the property of Convergent Water Controls Pty Ltd. They must not be copied or reproduced wholly or in part without written consent from Convergent Water Controls Pty Ltd.			
FILE: C:\CWC\Library\Products From Suppliers\SEKO\Seko Pumps - Spares Drawing					
MATERIAL: Misc		MASS: 327.68 grams			



ITEM NO.	PRODUCT CODE	DESCRIPTION
1	NE-AG-2939	Boxco IP66 Polycarbonate 300x400x150mm Grey lid hinged. Note: does not normally come pre drilled, please specify if you require drilled for a DIGICHEM-AB2-V-CABG system
2	SP-PCB-DIGI-XP2-M	DIGICHEM-XP2 Controller Replacement Motherboard only. (Does not include enclosure base to which circuit board is normally mounted. Does not include processor PCB which is fitted in lid of enclosure)
3	SP-PCB-DIGI-XP2-P-L	DIGICHEM-XP2 Replacement Processor Board, fitted to enclosure lid, ready to plug into motherboard and screw down onto enclosure base
3A	SP-PCB-DIGI-XP2-P	DIGICHEM-XP2 Spare Processor Board (Processor board only, to be fitted inside Optional enclosure lid)
4	SP-SK-PE-1.3-G	Replacement SEKO PE-1.3 pump, supplied without any accessories. For more detailed drawing of individual pump parts see SEKO PE-1.3-FP-T Spares Drawing
5	SP-M-AB2-V-CVPVC	Digichem Manifold - Includes Plastic PVC check valve and sample valve. Supplied without probe, solenoid valve, injection valves, third injection point & hosetails. For more detailed drawing of individual manifold parts see MAN 2P-V-S-CVPVC Spares Drawing
6	SP-DCON-PB10AT-PL	1.5m TDS Probe Lead Only & IP68 Connector
6A	SP-DCON-P10AT-PL	Old Style TDS probe lead to suit TDS Probe SP-DCON-P10AT-P or DCON-P10AT-P, 1.5m long (Includes old style metal connector fitted to lead)
7	TEFEN 12mmx3/4 HOSETAIL	12mmx3/4" Hosetail
8	SP-M-INJ-TEE-M-F	3rd Injection point to retrofit to manifold outlet. Includes Injection valve, 1/2" Tee and 3/4" Male and Female adaptors to screw into manifold
9	SP-PC-1	VUL 1" Low Dens PIPE CLIP

COMPATIBLE MODELS		
DIGICHEM-A2-V	DIGICHEM-AB2-V	DIGICHEM-X/3S-V
DIGICHEM-A2-V-CABG	DIGICHEM-AB2-V-CABG	DIGICHEM-X/3S-V-CABG



PRODUCT:  
**DIGICHEM-AB2-V-CABG**

DRAWING TYPE:  
Spare Parts - Wireframe

DRAWING No:  
**DIGICHEM-AB2-V-CABG\_ASM**

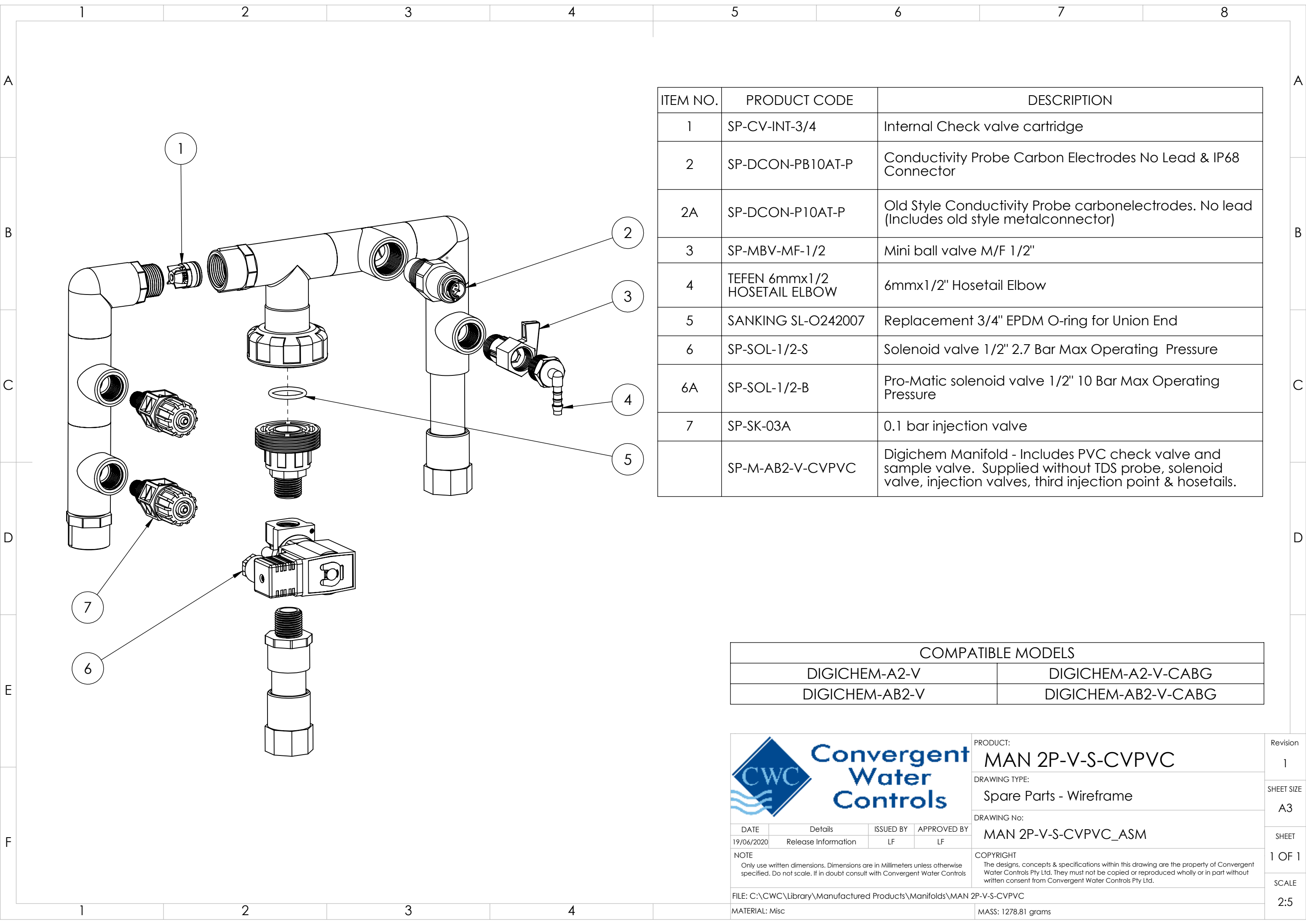
COPYRIGHT  
The designs, concepts & specifications within this drawing are the property of Convergent Water Controls Pty Ltd. They must not be copied or reproduced wholly or in part without written consent from Convergent Water Controls Pty Ltd.

DATE	Details	ISSUED BY	APPROVED BY
17/06/2020	Release Information	luke	LF
NOTE Only use written dimensions. Dimensions are in Millimeters unless otherwise specified. Do not scale. If in doubt consult with Convergent Water Controls			
FILE: C:\CWC\Library\Manufactured Products\System\Digichems\DIGICHEM-AB2-V-CABG			
MATERIAL: Misc			

Revision	1
SHEET SIZE	A3
SHEET	1 OF 1
SCALE	1:4


MASS: 6206.42 grams





ITEM NO.	PRODUCT CODE	DESCRIPTION
1	SP-CV-INT-3/4	Internal Check valve cartridge
2	SP-DCON-PB10AT-P	Conductivity Probe Carbon Electrodes No Lead & IP68 Connector
2A	SP-DCON-P10AT-P	Old Style Conductivity Probe carbonelectrodes. No lead (Includes old style metalconnector)
3	SP-MBV-MF-1/2	Mini ball valve M/F 1/2"
4	TEFEN 6mmx1/2 HOSETAIL ELBOW	6mmx1/2" Hosetail Elbow
5	SANKING SL-O242007	Replacement 3/4" EPDM O-ring for Union End
6	SP-SOL-1/2-S	Solenoid valve 1/2" 2.7 Bar Max Operating Pressure
6A	SP-SOL-1/2-B	Pro-Matic solenoid valve 1/2" 10 Bar Max Operating Pressure
7	SP-SK-03A	0.1 bar injection valve
	SP-M-AB2-V-CVPVC	Digichem Manifold - Includes PVC check valve and sample valve. Supplied without TDS probe, solenoid valve, injection valves, third injection point & hosetails.

COMPATIBLE MODELS	
DIGICHEM-A2-V	DIGICHEM-A2-V-CABG
DIGICHEM-AB2-V	DIGICHEM-AB2-V-CABG



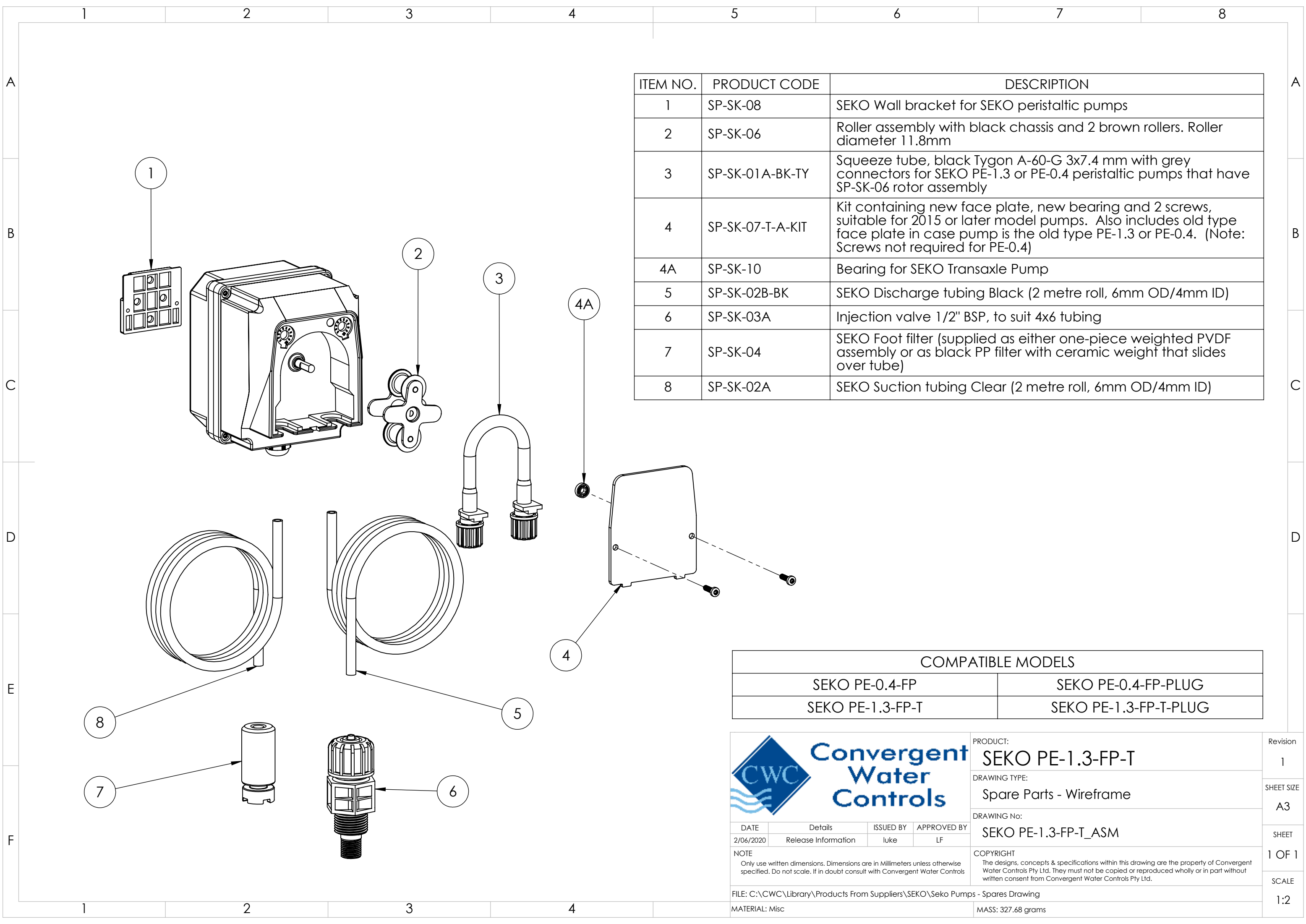
PRODUCT: **MAN 2P-V-S-CVPVC**

DRAWING TYPE: **Spare Parts - Wireframe**

DRAWING No: **MAN 2P-V-S-CVPVC\_ASM**


COPYRIGHT  
The designs, concepts & specifications within this drawing are the property of Convergent Water Controls Pty Ltd. They must not be copied or reproduced wholly or in part without written consent from Convergent Water Controls Pty Ltd.

DATE	Details	ISSUED BY	APPROVED BY	Revision
19/06/2020	Release Information	LF	LF	1
NOTE Only use written dimensions. Dimensions are in Millimeters unless otherwise specified. Do not scale. If in doubt consult with Convergent Water Controls				SHEET SIZE A3
FILE: C:\CWC\Library\Manufactured Products\Manifolds\MAN 2P-V-S-CVPVC				SHEET 1 OF 1
MATERIAL: Misc				SCALE 2:5



ITEM NO.	PRODUCT CODE	DESCRIPTION
1	SP-SK-08	SEKO Wall bracket for SEKO peristaltic pumps
2	SP-SK-06	Roller assembly with black chassis and 2 brown rollers. Roller diameter 11.8mm
3	SP-SK-01A-BK-TY	Squeeze tube, black Tygon A-60-G 3x7.4 mm with grey connectors for SEKO PE-1.3 or PE-0.4 peristaltic pumps that have SP-SK-06 rotor assembly
4	SP-SK-07-T-A-KIT	Kit containing new face plate, new bearing and 2 screws, suitable for 2015 or later model pumps. Also includes old type face plate in case pump is the old type PE-1.3 or PE-0.4. (Note: Screws not required for PE-0.4)
4A	SP-SK-10	Bearing for SEKO Transaxle Pump
5	SP-SK-02B-BK	SEKO Discharge tubing Black (2 metre roll, 6mm OD/4mm ID)
6	SP-SK-03A	Injection valve 1/2" BSP, to suit 4x6 tubing
7	SP-SK-04	SEKO Foot filter (supplied as either one-piece weighted PVDF assembly or as black PP filter with ceramic weight that slides over tube)
8	SP-SK-02A	SEKO Suction tubing Clear (2 metre roll, 6mm OD/4mm ID)

COMPATIBLE MODELS	
SEKO PE-0.4-FP	SEKO PE-0.4-FP-PLUG
SEKO PE-1.3-FP-T	SEKO PE-1.3-FP-T-PLUG

		PRODUCT:	SEKO PE-1.3-FP-T	Revision	1
		DRAWING TYPE:	Spare Parts - Wireframe	SHEET SIZE	A3
		DRAWING No:	SEKO PE-1.3-FP-T_ASM	SHEET	1 OF 1
DATE		Details	ISSUED BY	APPROVED BY	SCALE
2/06/2020		Release Information	luke	LF	1:2
NOTE		COPYRIGHT			
Only use written dimensions. Dimensions are in Millimeters unless otherwise specified. Do not scale. If in doubt consult with Convergent Water Controls		The designs, concepts & specifications within this drawing are the property of Convergent Water Controls Pty Ltd. They must not be copied or reproduced wholly or in part without written consent from Convergent Water Controls Pty Ltd.			
FILE: C:\CWC\Library\Products From Suppliers\SEKO\Seko Pumps - Spares Drawing					
MATERIAL: Misc		MASS: 327.68 grams			