
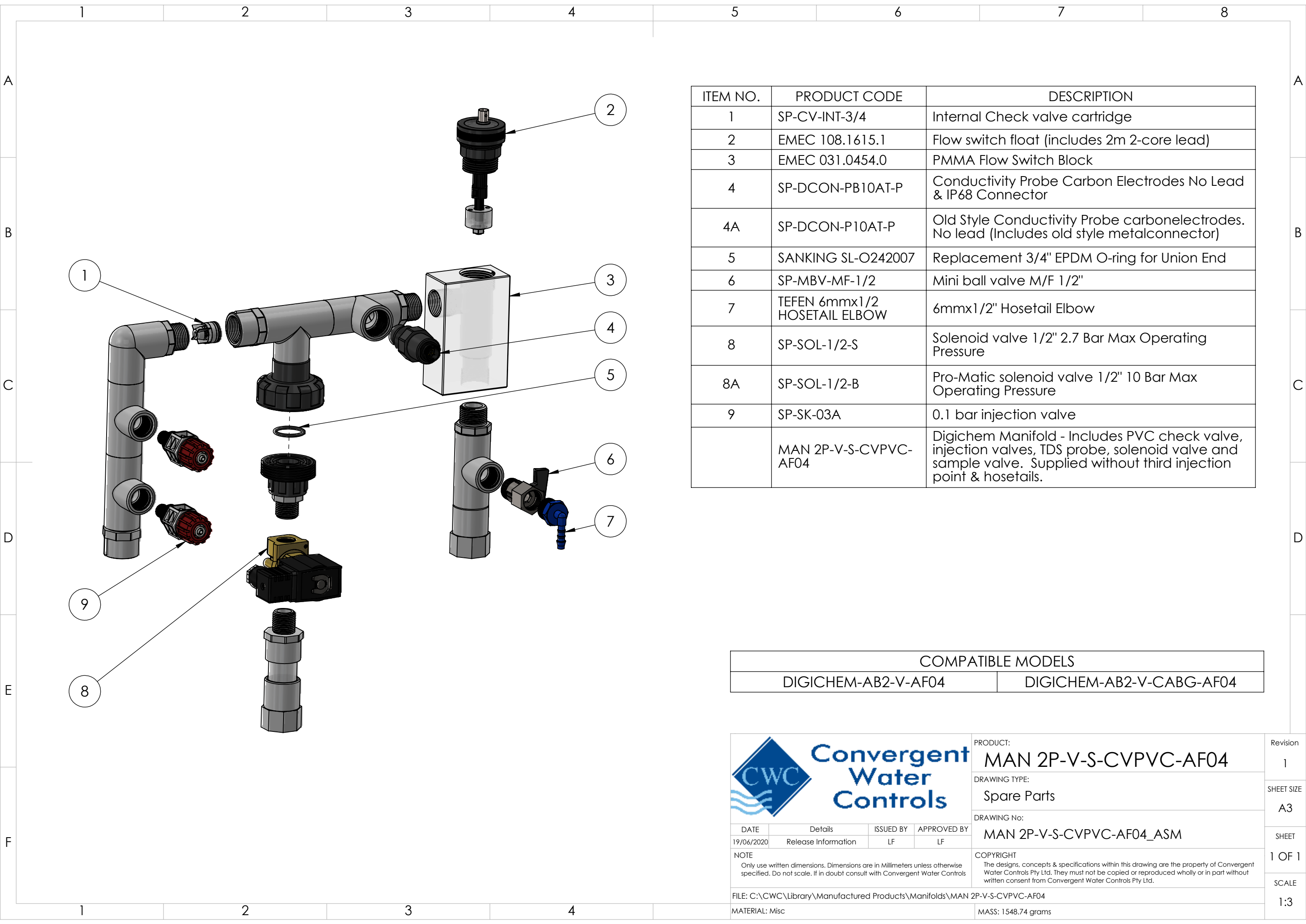


ITEM NO.	PRODUCT CODE	DESCRIPTION
1	NE-AG-2939	Boxco IP66 Polycarbonate 300x400x150mm Grey lid hinged. Note: does not normally come pre drilled, please specify if you require drilled for a DIGICHEM-AB2-V-CABG system
2	SP-PCB-DIGI-XP2-M	DIGICHEM-XP2 Controller Replacement Motherboard only. (Does not include enclosure base to which circuit board is normally mounted. Does not include processor PCB which is fitted in lid of enclosure)
3	SP-PCB-DIGI-XP2-P-L	DIGICHEM-XP2 Replacement Processor Board, fitted to enclosure lid, ready to plug into motherboard and screw down onto enclosure base
3A	SP-PCB-DIGI-XP2-P	DIGICHEM-XP2 Spare Processor Board (Processor board only, to be fitted inside Optional enclosure lid)
4	SP-SK-PE-1.3-G	Replacement SEKO PE-1.3 pump, supplied without any accessories. For more detailed drawing of individual pump parts see SEKO PE-1.3-FP-T Spares Drawing
5	TEFEN 12mmx3/4 HOSETAIL	12mmx3/4" Hosetail
6	SP-M-INJ-TEE-M-F	3rd Injection point to retrofit to manifold outlet. Includes Injection valve, 1/2" Tee and 3/4" Male and Female adaptors to screw into manifold
7	SP-PC-1	VUL 1" Low Dens PIPE CLIP
8	MAN 2P-V-S-CVPVC-AF04	Digichem Manifold - Includes Plastic PVC check valve, injection valves, probe, solenoid valve and sample valve. Supplied without third injection point & hosetails. For more detailed drawing of individual manifold parts see MAN 2P-V-S-CVPVC-AF04 Spares Drawing
9	SP-DCON-PB10AT-PL	1.5m TDS Probe Lead Only & IP68 Connector
9A	SP-DCON-P10AT-PL	Old Style TDS probe lead to suit TDS Probe SP-DCON-P10AT-P or DCON-P10AT-P, 1.5m long (Includes old style metal connector fitted to lead)


COMPATIBLE MODELS	
DIGICHEM-AB2-V-AF04	DIGICHEM-AB2-V-CABG-AF04

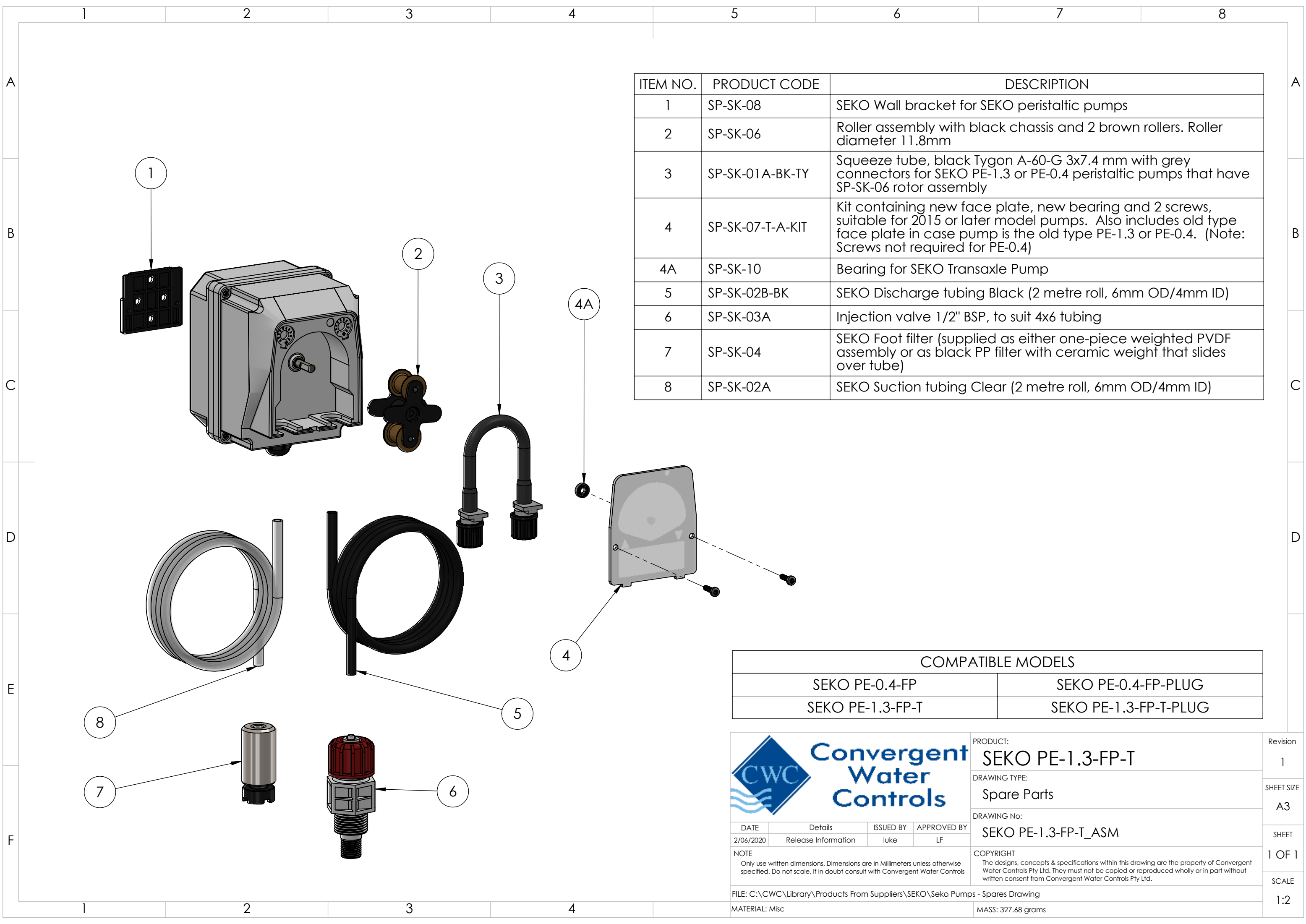
<div><div><div>Convergent</div><div>Water</div><div>Controls</div></div></div>				<div>PRODUCT:</div> <div>DIGICHEM-AB2-V-CABG-AF04</div>	
<div>DRAWING TYPE:</div> <div>Spare Parts</div>					
<div>DRAWING No:</div> <div>DIGICHEM-AB2-V-CABG-AF04_ASM</div>					
<div>DATE</div> <div>18/06/2020</div>		<div>Details</div> <div>Release Information</div>	<div>ISSUED BY</div> <div>luke</div>	<div>APPROVED BY</div> <div>LF</div>	
<div>NOTE</div> <div>Only use written dimensions. Dimensions are in Millimeters unless otherwise specified. Do not scale. If in doubt consult with Convergent Water Controls</div>				<div>COPYRIGHT</div> <div>The designs, concepts & specifications within this drawing are the property of Convergent Water Controls Pty Ltd. They must not be copied or reproduced wholly or in part without written consent from Convergent Water Controls Pty Ltd.</div>	
<div>FILE: C:\CWC\Library\Manufactured Products\System\Digichems\DIGICHEM-AB2-V-CABG</div>					
<div>MATERIAL: Misc</div>			<div>MASS: 6767.10 grams</div>		



ITEM NO.	PRODUCT CODE	DESCRIPTION
1	SP-CV-INT-3/4	Internal Check valve cartridge
2	EMEC 108.1615.1	Flow switch float (includes 2m 2-core lead)
3	EMEC 031.0454.0	PMMA Flow Switch Block
4	SP-DCON-PB10AT-P	Conductivity Probe Carbon Electrodes No Lead & IP68 Connector
4A	SP-DCON-P10AT-P	Old Style Conductivity Probe carbonelectrodes. No lead (Includes old style metalconnector)
5	SANKING SL-O242007	Replacement 3/4" EPDM O-ring for Union End
6	SP-MBV-MF-1/2	Mini ball valve M/F 1/2"
7	TEFEN 6mmx1/2 HOSETAIL ELBOW	6mmx1/2" Hosetail Elbow
8	SP-SOL-1/2-S	Solenoid valve 1/2" 2.7 Bar Max Operating Pressure
8A	SP-SOL-1/2-B	Pro-Matic solenoid valve 1/2" 10 Bar Max Operating Pressure
9	SP-SK-03A	0.1 bar injection valve
	MAN 2P-V-S-CVPVC-AF04	Digichem Manifold - Includes PVC check valve, injection valves, TDS probe, solenoid valve and sample valve. Supplied without third injection point & hosetails.

COMPATIBLE MODELS	
DIGICHEM-AB2-V-AF04	DIGICHEM-AB2-V-CABG-AF04

<div></div> <div><h1>Convergent Water Controls</h1></div>				PRODUCT: MAN 2P-V-S-CVPVC-AF04		Revision 1
				DRAWING TYPE: Spare Parts		SHEET SIZE A3
				DRAWING No: MAN 2P-V-S-CVPVC-AF04_ASM		SHEET 1 OF 1
NOTE Only use written dimensions. Dimensions are in Millimeters unless otherwise specified. Do not scale. If in doubt consult with Convergent Water Controls				COPYRIGHT The designs, concepts & specifications within this drawing are the property of Convergent Water Controls Pty Ltd. They must not be copied or reproduced wholly or in part without written consent from Convergent Water Controls Pty Ltd.		SCALE 1:3
FILE: C:\CWC\Library\Manufactured Products\Manifolds\MAN 2P-V-S-CVPVC-AF04						
MATERIAL: Misc				MASS: 1548.74 grams		



ITEM NO.	PRODUCT CODE	DESCRIPTION
1	SP-SK-08	SEKO Wall bracket for SEKO peristaltic pumps
2	SP-SK-06	Roller assembly with black chassis and 2 brown rollers. Roller diameter 11.8mm
3	SP-SK-01A-BK-TY	Squeeze tube, black Tygon A-60-G 3x7.4 mm with grey connectors for SEKO PE-1.3 or PE-0.4 peristaltic pumps that have SP-SK-06 rotor assembly
4	SP-SK-07-T-A-KIT	Kit containing new face plate, new bearing and 2 screws, suitable for 2015 or later model pumps. Also includes old type face plate in case pump is the old type PE-1.3 or PE-0.4. (Note: Screws not required for PE-0.4)
4A	SP-SK-10	Bearing for SEKO Transaxle Pump
5	SP-SK-02B-BK	SEKO Discharge tubing Black (2 metre roll, 6mm OD/4mm ID)
6	SP-SK-03A	Injection valve 1/2" BSP, to suit 4x6 tubing
7	SP-SK-04	SEKO Foot filter (supplied as either one-piece weighted PVDF assembly or as black PP filter with ceramic weight that slides over tube)
8	SP-SK-02A	SEKO Suction tubing Clear (2 metre roll, 6mm OD/4mm ID)

COMPATIBLE MODELS	
SEKO PE-0.4-FP	SEKO PE-0.4-FP-PLUG
SEKO PE-1.3-FP-T	SEKO PE-1.3-FP-T-PLUG



PRODUCT:
SEKO PE-1.3-FP-T

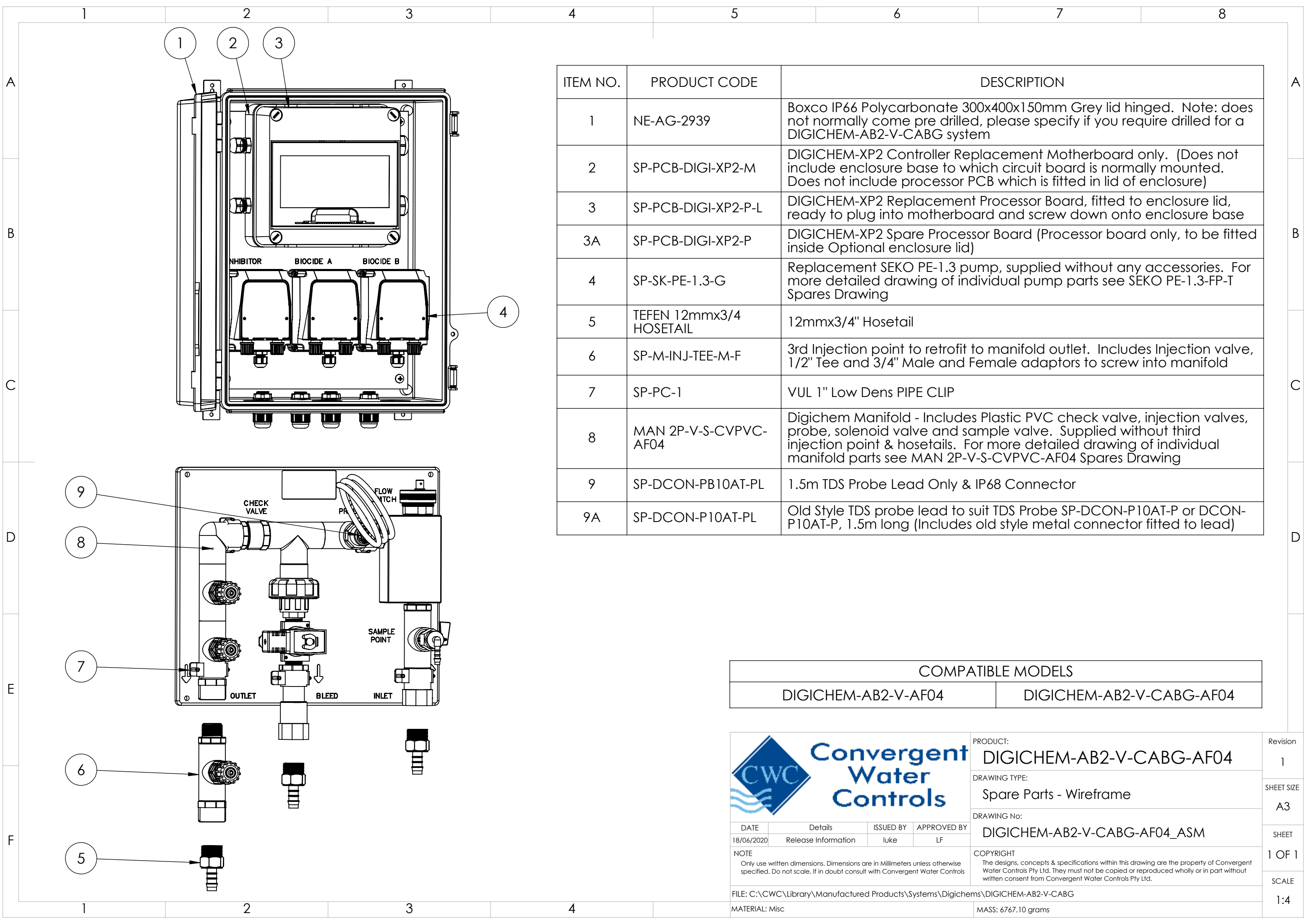
DRAWING TYPE:
Spare Parts

DRAWING No:
SEKO PE-1.3-FP-T_ASM

COPYRIGHT
The designs, concepts & specifications within this drawing are the property of Convergent Water Controls Pty Ltd. They must not be copied or reproduced wholly or in part without written consent from Convergent Water Controls Pty Ltd.


DATE 2/06/2020	Details Release Information	ISSUED BY luke	APPROVED BY LF
NOTE Only use written dimensions. Dimensions are in Millimeters unless otherwise specified. If in doubt consult with Convergent Water Controls			
FILE: C:\CWC\Library\Products From Suppliers\SEKO\Seko Pumps - Spares Drawing			
MATERIAL: Misc			

Revision 1
SHEET SIZE A3
SHEET 1 OF 1
SCALE 1:2



ITEM NO.	PRODUCT CODE	DESCRIPTION
1	NE-AG-2939	Boxco IP66 Polycarbonate 300x400x150mm Grey lid hinged. Note: does not normally come pre drilled, please specify if you require drilled for a DIGICHEM-AB2-V-CABG system
2	SP-PCB-DIGI-XP2-M	DIGICHEM-XP2 Controller Replacement Motherboard only. (Does not include enclosure base to which circuit board is normally mounted. Does not include processor PCB which is fitted in lid of enclosure)
3	SP-PCB-DIGI-XP2-P-L	DIGICHEM-XP2 Replacement Processor Board, fitted to enclosure lid, ready to plug into motherboard and screw down onto enclosure base
3A	SP-PCB-DIGI-XP2-P	DIGICHEM-XP2 Spare Processor Board (Processor board only, to be fitted inside Optional enclosure lid)
4	SP-SK-PE-1.3-G	Replacement SEKO PE-1.3 pump, supplied without any accessories. For more detailed drawing of individual pump parts see SEKO PE-1.3-FP-T Spares Drawing
5	TEFEN 12mmx3/4 HOSETAIL	12mmx3/4" Hosetail
6	SP-M-INJ-TEE-M-F	3rd Injection point to retrofit to manifold outlet. Includes Injection valve, 1/2" Tee and 3/4" Male and Female adaptors to screw into manifold
7	SP-PC-1	VUL 1" Low Dens PIPE CLIP
8	MAN 2P-V-S-CVPVC-AF04	Digichem Manifold - Includes Plastic PVC check valve, injection valves, probe, solenoid valve and sample valve. Supplied without third injection point & hosetails. For more detailed drawing of individual manifold parts see MAN 2P-V-S-CVPVC-AF04 Spares Drawing
9	SP-DCON-PB10AT-PL	1.5m TDS Probe Lead Only & IP68 Connector
9A	SP-DCON-P10AT-PL	Old Style TDS probe lead to suit TDS Probe SP-DCON-P10AT-P or DCON-P10AT-P, 1.5m long (Includes old style metal connector fitted to lead)

COMPATIBLE MODELS	
DIGICHEM-AB2-V-AF04	DIGICHEM-AB2-V-CABG-AF04



PRODUCT:
DIGICHEM-AB2-V-CABG-AF04

DRAWING TYPE:
Spare Parts - Wireframe

DRAWING No:
DIGICHEM-AB2-V-CABG-AF04_ASM

COPYRIGHT
The designs, concepts & specifications within this drawing are the property of Convergent Water Controls Pty Ltd. They must not be copied or reproduced wholly or in part without written consent from Convergent Water Controls Pty Ltd.

DATE	Details	ISSUED BY	APPROVED BY
18/06/2020	Release Information	luke	LF
NOTE Only use written dimensions. Dimensions are in Millimeters unless otherwise specified. Do not scale. If in doubt consult with Convergent Water Controls			
FILE: C:\CWC\Library\Manufactured Products\System\Digichems\DIGICHEM-AB2-V-CABG			
MATERIAL: Misc			

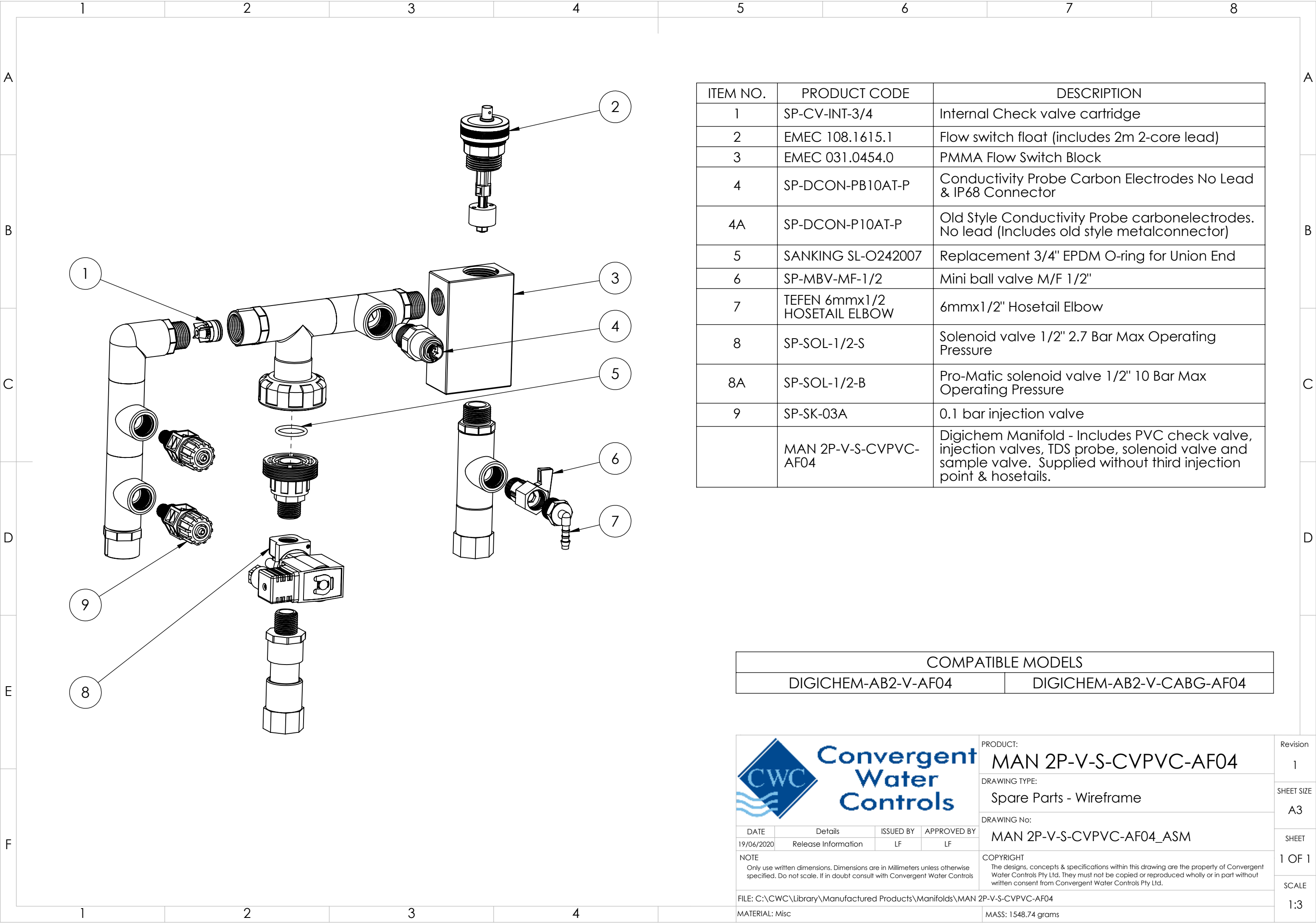
Revision
1

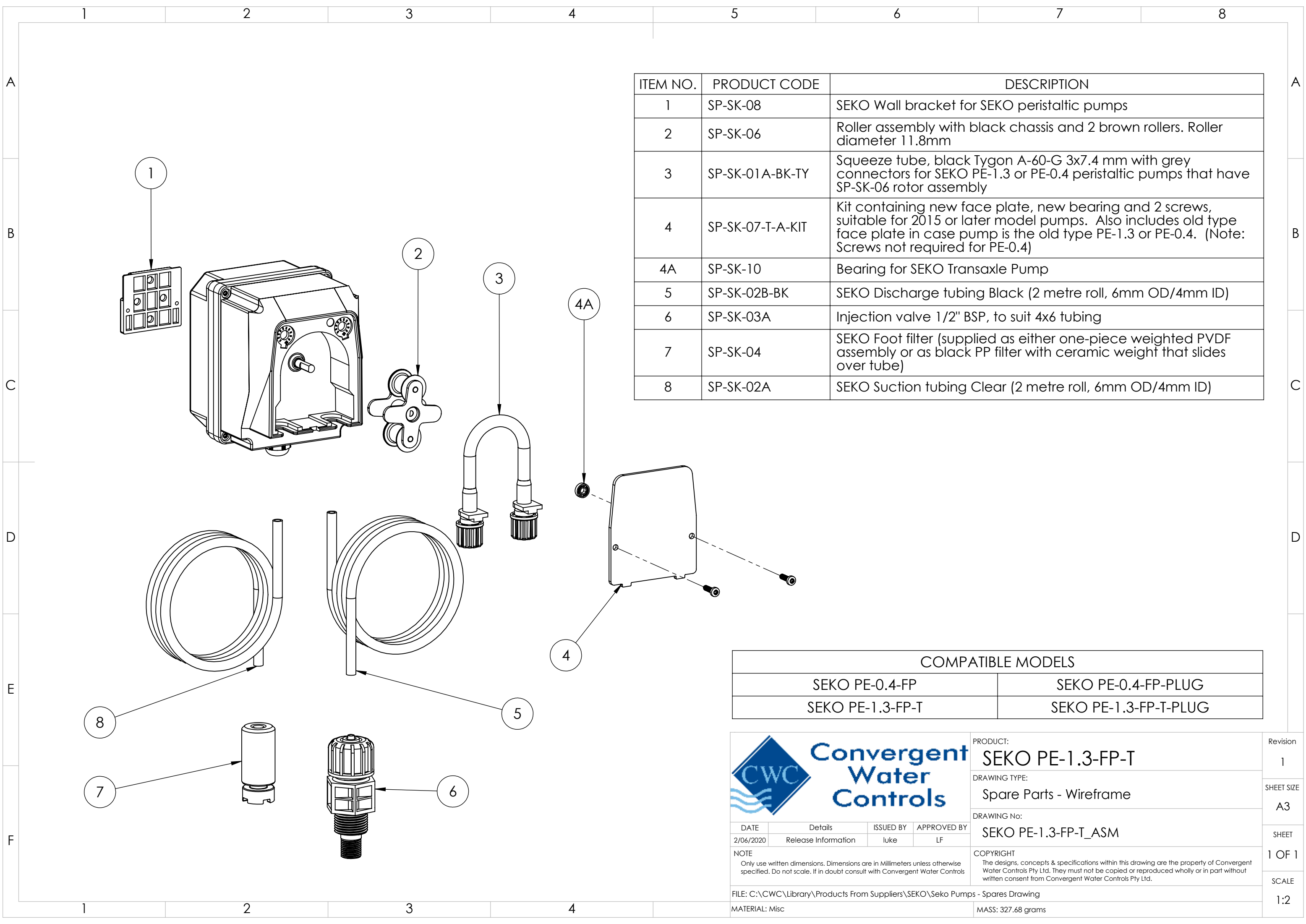
SHEET SIZE
A3

SHEET
1 OF 1

SCALE
1:4


MASS: 6767.10 grams





ITEM NO.	PRODUCT CODE	DESCRIPTION
1	SP-SK-08	SEKO Wall bracket for SEKO peristaltic pumps
2	SP-SK-06	Roller assembly with black chassis and 2 brown rollers. Roller diameter 11.8mm
3	SP-SK-01A-BK-TY	Squeeze tube, black Tygon A-60-G 3x7.4 mm with grey connectors for SEKO PE-1.3 or PE-0.4 peristaltic pumps that have SP-SK-06 rotor assembly
4	SP-SK-07-T-A-KIT	Kit containing new face plate, new bearing and 2 screws, suitable for 2015 or later model pumps. Also includes old type face plate in case pump is the old type PE-1.3 or PE-0.4. (Note: Screws not required for PE-0.4)
4A	SP-SK-10	Bearing for SEKO Transaxle Pump
5	SP-SK-02B-BK	SEKO Discharge tubing Black (2 metre roll, 6mm OD/4mm ID)
6	SP-SK-03A	Injection valve 1/2" BSP, to suit 4x6 tubing
7	SP-SK-04	SEKO Foot filter (supplied as either one-piece weighted PVDF assembly or as black PP filter with ceramic weight that slides over tube)
8	SP-SK-02A	SEKO Suction tubing Clear (2 metre roll, 6mm OD/4mm ID)

COMPATIBLE MODELS	
SEKO PE-0.4-FP	SEKO PE-0.4-FP-PLUG
SEKO PE-1.3-FP-T	SEKO PE-1.3-FP-T-PLUG

	PRODUCT:	SEKO PE-1.3-FP-T	Revision	1
	DRAWING TYPE:	Spare Parts - Wireframe	SHEET SIZE	A3
	DRAWING No:	SEKO PE-1.3-FP-T_ASM	SHEET	1 OF 1
	NOTE	COPYRIGHT The designs, concepts & specifications within this drawing are the property of Convergent Water Controls Pty Ltd. They must not be copied or reproduced wholly or in part without written consent from Convergent Water Controls Pty Ltd.		
	FILE: C:\CWC\Library\Products From Suppliers\SEKO\Seko Pumps - Spares Drawing	SCALE		
MATERIAL: Misc		MASS: 327.68 grams		