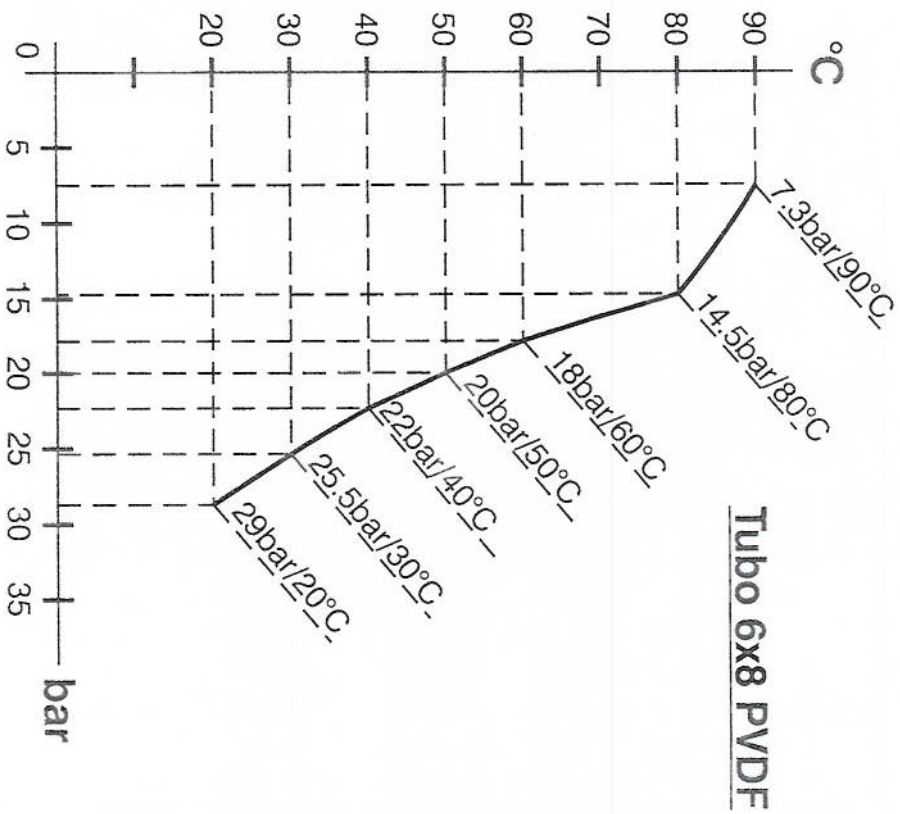
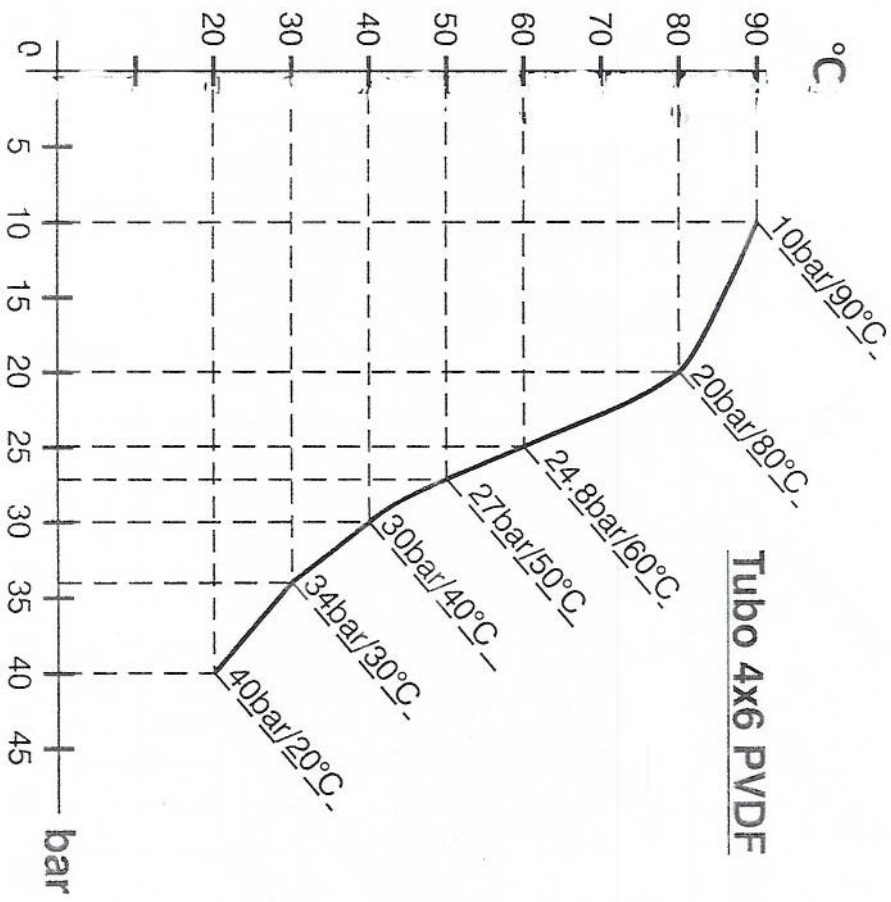


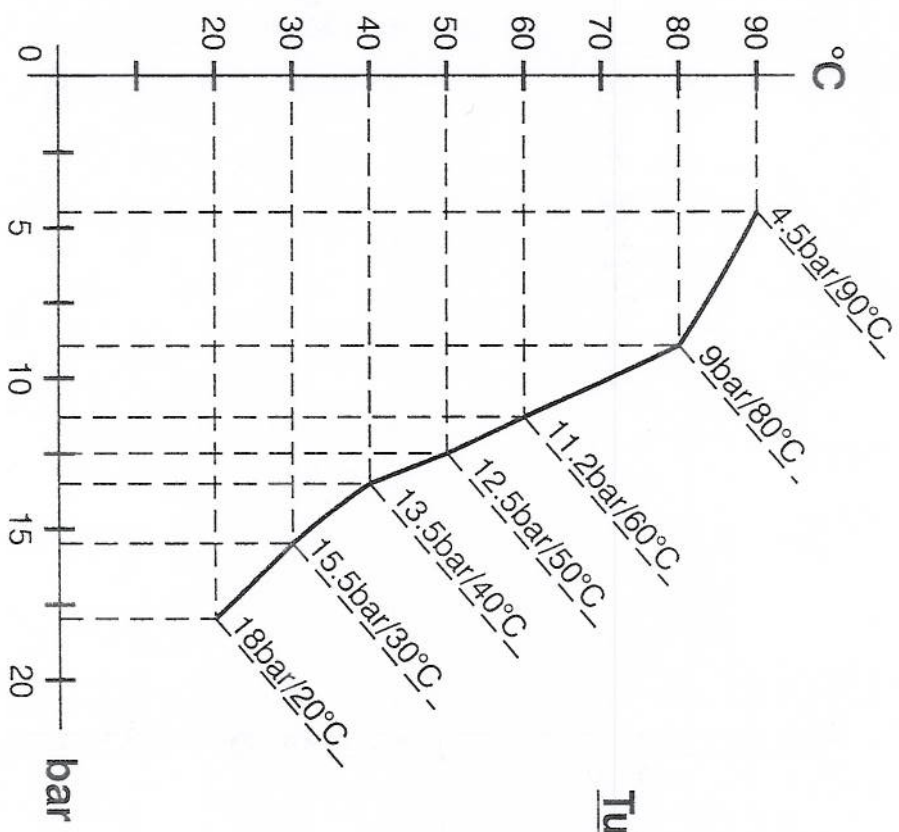
Tubo aspirazione / scarico

4x6 mm PVC (trasparente)	4x8 mm PE (opaco)	6x8 mm PE (opaco)	8x12 mm PVC (trasparente)
-----------------------------	----------------------	----------------------	------------------------------

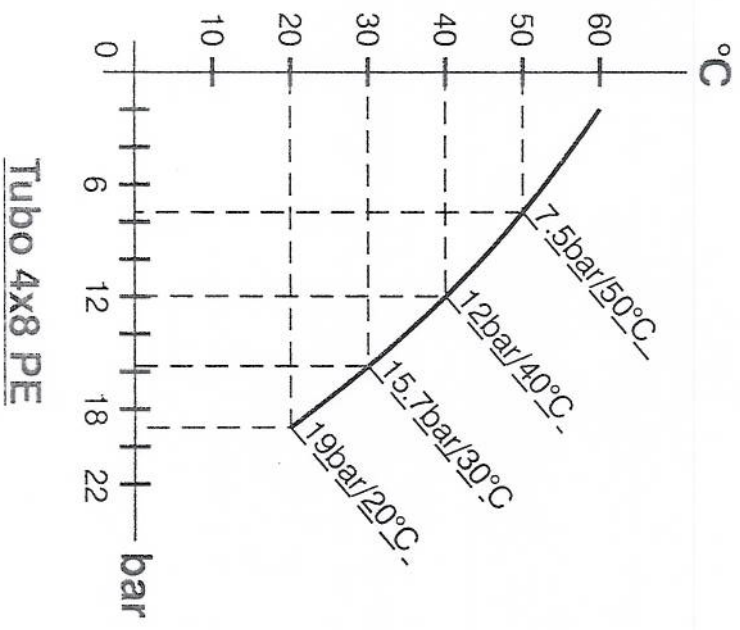
Tubo mandata	Pressione di esercizio				Pressione di scoppio			
	20°C	30°C	40°C	50°C	20°C	30°C	40°C	50°C
4x6 mm PE 230 (opaco)	12 bar	10.5 bar	8.5 bar	6.2 bar	36 bar	31.5 bar	25.5 bar	18.5 bar
4x8 mm PE 230 (opaco)	19 bar	15.7 bar	12 bar	7.5 bar	57 bar	47 bar	36 bar	22.5 bar
6x8 mm PE 230 (opaco)	8.6 bar	6.8 bar	4.8 bar	2.3 bar	26 bar	20.5 bar	14.5 bar	7 bar
8x12 mm PE 230 (opaco)	12 bar	10.5 bar	8.5 bar	6.2 bar	36 bar	31.5 bar	25.5 bar	18.5 bar
4x6 mm PVDF Flex 2800 (opaco)	20°C 40 bar	30°C 34 bar	40°C 30 bar	50°C 27 bar	60°C 24.8 bar	80°C 20 bar	90°C 10 bar	
6x8 mm PVDF Flex 2800 (opaco)	20°C 29 bar	30°C 25.5 bar	40°C 22 bar	50°C 20 bar	60°C 18 bar	80°C 14.5 bar	90°C 7.3 bar	
8X10 mm PVDF Flex 2800 (opaco)	20°C 18 bar	30°C 15.5 bar	40°C 13.5 bar	50°C 12.5 bar	60°C 11.2 bar	80°C 9 bar	90°C 4.5 bar	

1/4 PE 230 (opaco)	20°C 17.6 bar
3/8 PE 230 (opaco)	20°C 10.6 bar
1/2 PE 230 (opaco)	20°C 10.6 bar

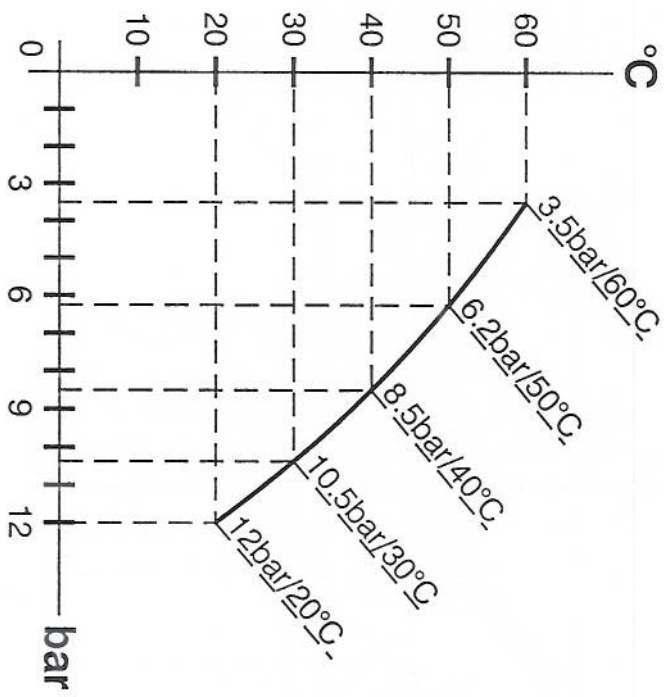




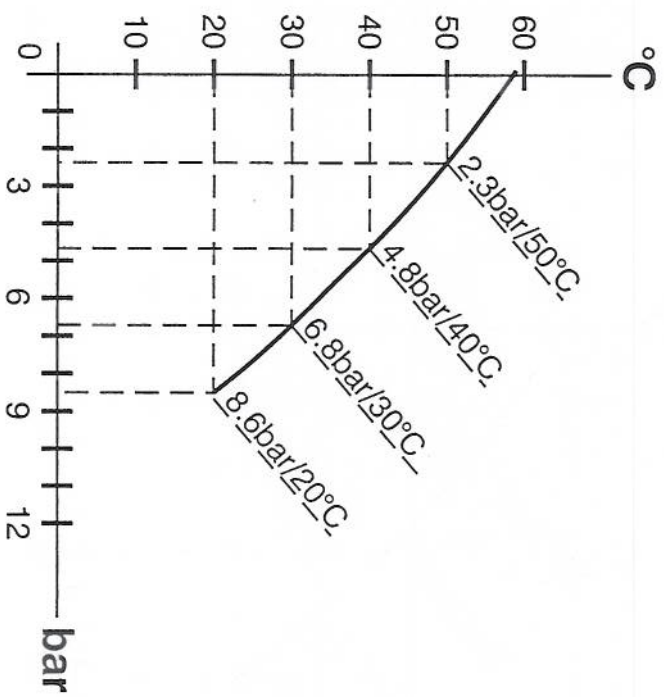
Tubo 8x10 PVDF



Tubo 4x8 PE



Tubo 4x6 e 8x12 PE



Tubo 6x8 PE